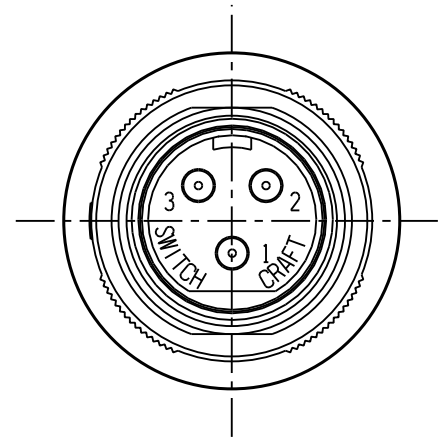
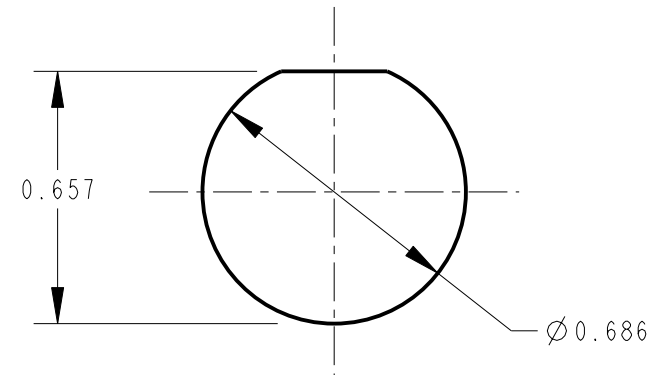


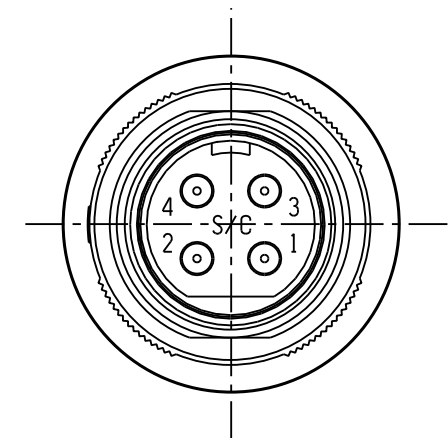
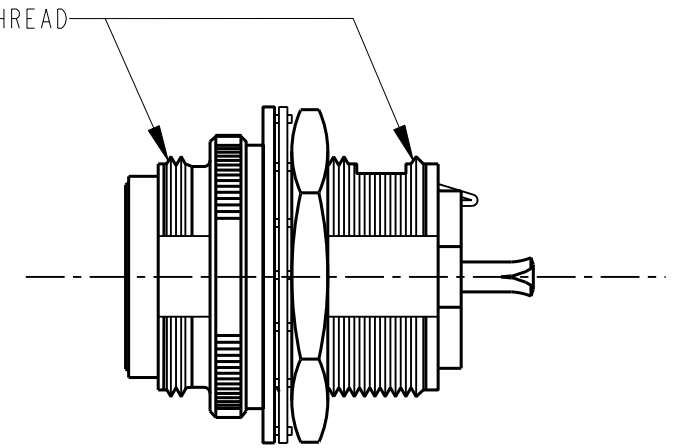
SL182MX
2 PIN



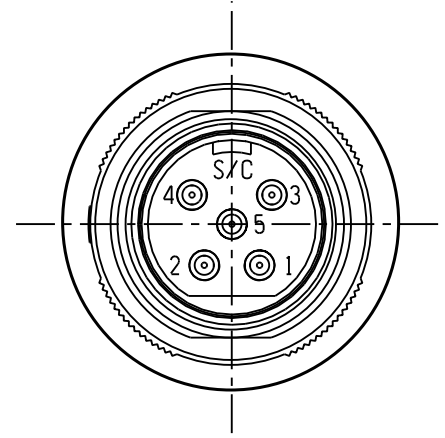
SL183MX
3 PIN



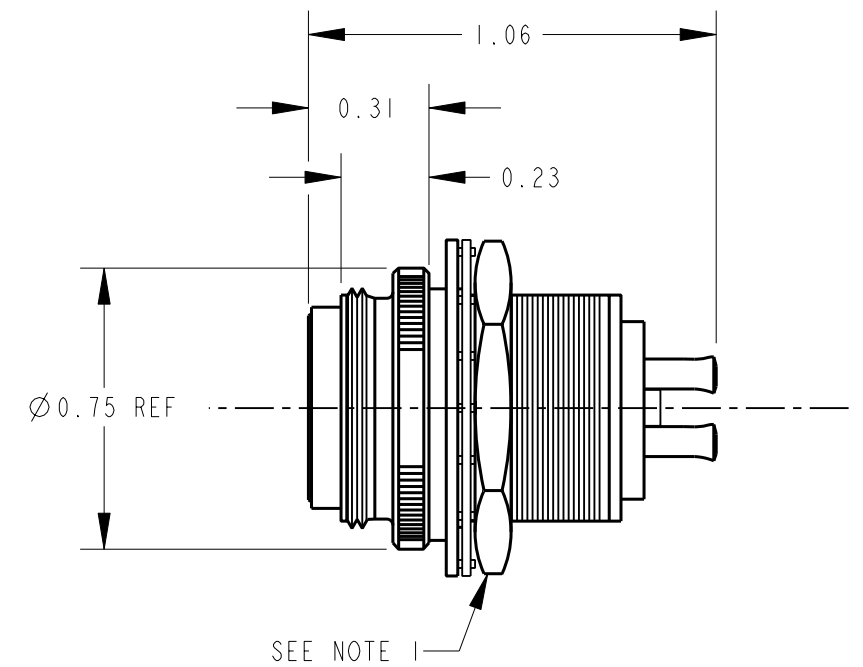
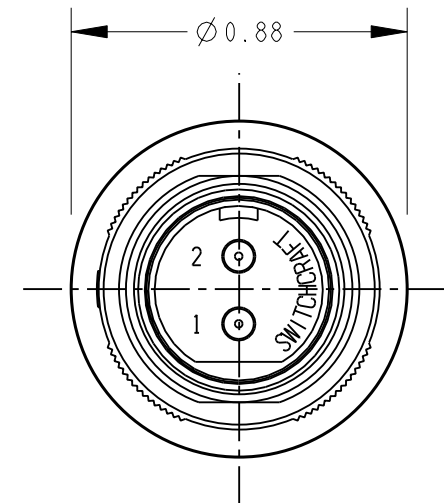
RECOMMENDED
MOUNTING HOLE LAYOUT



SL184MX
4 PIN



SL185MX
5 PIN



CUSTOMER DRAWING

NOTES:

1. HOUSING AND PIN ASSEMBLY SHIPPED UNASSEMBLED.
2. HEX NUT AND WASHERS SHIPPED UNASSEMBLED.
3. MATERIALS:
HOUSING - ZINC, NICKEL PLATED
INSERT - THERMOPLASTIC, BLACK
CONTACTS - COPPER ALLOY, SILVER PLATED
LATCH & WASHERS - STEEL, NICKEL PLATED
HEX NUT - COPPER ALLOY, NICKEL PLATED
4. THESE PRODUCTS ARE RoHS COMPLIANT.

					★ STAR SYMBOL DENOTES CRITICAL DIMENSION	THIS DRAWING DESCRIBES A DESIGN CONSIDERED PROPRIETARY IN NATURE, DEVELOPED AND MANUFACTURED BY SWITCHCRAFT INC. AND IS RELEASED ON A CONFIDENTIAL BASIS FOR IDENTIFICATION PURPOSES ONLY.											
					UNLESS OTHERWISE SPECIFIED	SIZE		WIDTH		MULT		LBS/M		TEMPER			
					1. ALL DIMENSIONS IN INCHES - TWO PLACE DECIMALS ±0.01 - THREE PLACE DECIMALS ±0.005 - ANGLES ±° - ALL DIA. CONCENTRIC WITHIN 0.005 T.I.R.	FINISH SPEC No.				MATERIAL SPEC No.							
C	27214	10-28-13	TO	TJK	2. FEATURES ON THE SAME CENTERLINE MUST BE ALIGNED WITHIN ±0.002	FIRST USED ON			SCALE 2:1			Switchcraft®					
B	27066	12-12-12	TO	TJK		DATE DRAWN	BY	CHKD	APVD								
A	26150	11-30-06	TJK	TJK		30-Nov-06	TJK	TJK 11-30-06	TJK 11-30-06			SHEET OF					
REV	ECO NUMBER	DATE	BY	APVD	3. REMOVE ALL BURRS	NAME				PART No.				REV			
REVISIONS					DO NOT SCALE DRAWING	SLIM-LINE MALE FRONT PANEL MOUNT RECEPTACLE, RoHS				SL18_MX SERIES				C			

Mouser Electronics

Authorized Distributor

Click to View Pricing, Inventory, Delivery & Lifecycle Information:

Switchcraft:

[SL182MX](#) [SL183MX](#)