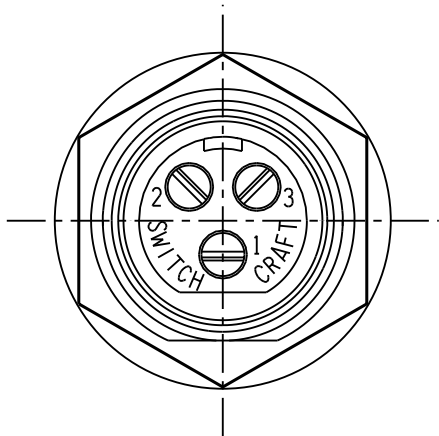
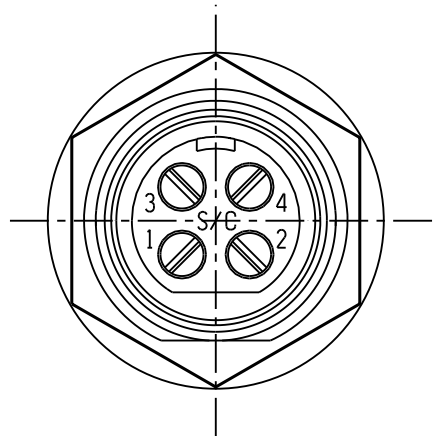


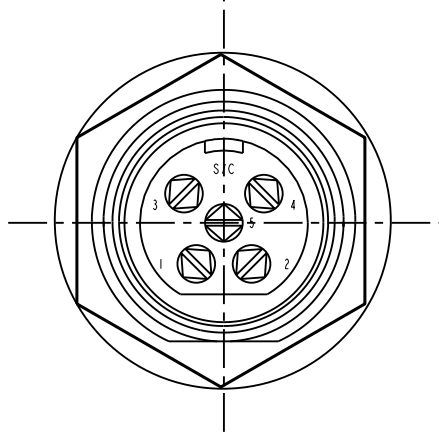
SL172FX
2 PIN



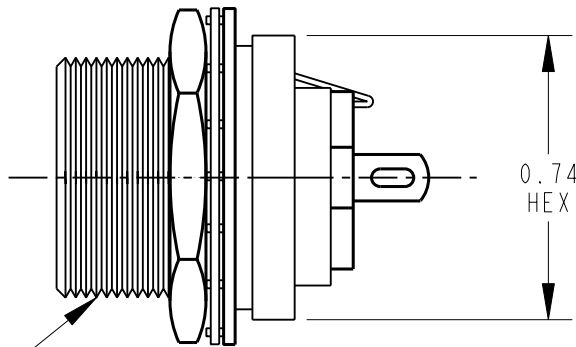
SL173FX
3 PIN



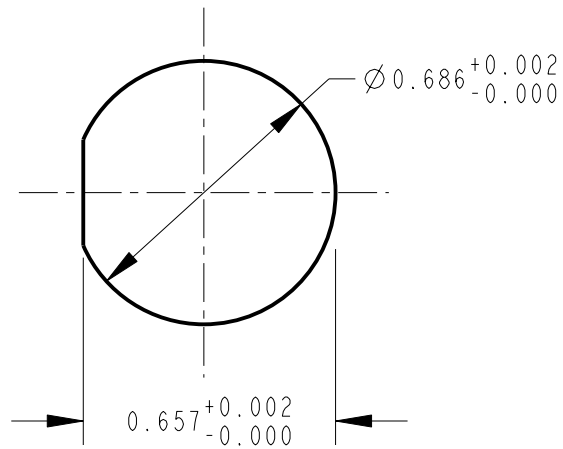
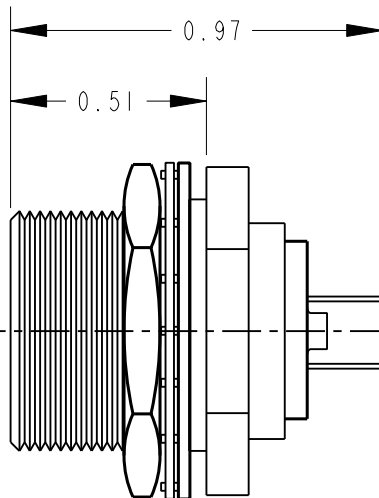
SL174FX
4 PIN



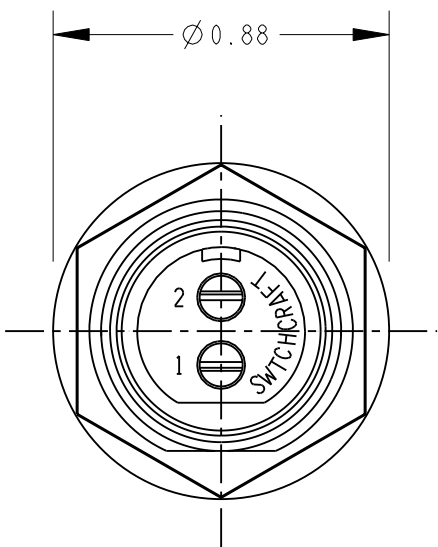
SL175FX
5 PIN



5/8-27 UNS-2A
THREAD



RECOMMENDED
MOUNTING HOLE LAYOUT



NOTES:

- MATERIALS:
HOUSING - ZINC ALLOY, NICKEL PLATED
INSERT - THERMOPLASTIC, BLACK
CONTACTS - COPPER ALLOY, SILVER PLATED
LATCH - STEEL, NICKEL PLATED
HEXNUT - BRASS, NICKEL PLATED
LOCK WASHER - STEEL, NICKEL PLATED
FLAT WASHER - STEEL, NICKEL PLATED
- HOUSING, INSULATOR ASSEMBLY AND HARDWARE SHIPPED UNASSEMBLED.
- THESE PRODUCTS ARE RoHS COMPLIANT.

					★ STAR SYMBOL DENOTES CRITICAL DIMENSION	THIS DRAWING DESCRIBES A DESIGN CONSIDERED PROPRIETARY IN NATURE, DEVELOPED AND MANUFACTURED BY SWITCHCRAFT INC. AND IS RELEASED ON A CONFIDENTIAL BASIS FOR IDENTIFICATION PURPOSES ONLY.								
					UNLESS OTHERWISE SPECIFIED 1. ALL DIMENSIONS IN INCHES - TWO PLACE DECIMALS ±0.01 - THREE PLACE DECIMALS ±0.005 - ANGLES ±1° - ALL DIA. CONCENTRIC WITHIN 0.005 T.I.R. 2. FEATURES ON THE SAME CENTERLINE MUST BE ALIGNED WITHIN ±0.002 3. REMOVE ALL BURRS	SIZE	WIDTH		MULT		LBS/M		TEMPER	
						FINISH SPEC No.						MATERIAL SPEC No.		
						FIRST USED ON			SCALE NONE		Switchcraft®			
						DATE DRAWN	BY	CHKD	APVD					
												SHEET OF		
B	27066	12-12-12	TO	TJK		NAME SLIM-LINE FEMALE REAR PANEL MOUNT RECEPTACLE, RoHS						PART No. SL17_FX SERIES		REV B
A	26150	9-15-06	TO	TJK										
REV	ECO NUMBER	DATE	BY	APVD										
REVISIONS					DO NOT SCALE DRAWING									

Mouser Electronics

Authorized Distributor

Click to View Pricing, Inventory, Delivery & Lifecycle Information:

[Switchcraft:](#)

[SL172FX](#) [SL173FX](#) [SL174FX](#) [SL175FX](#)