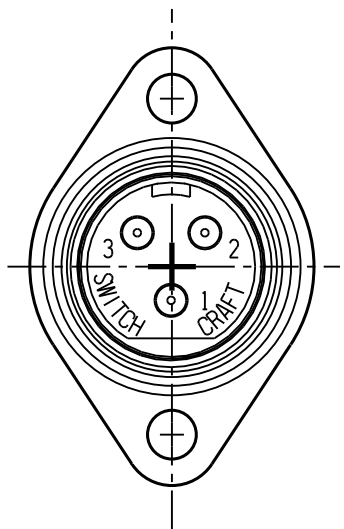
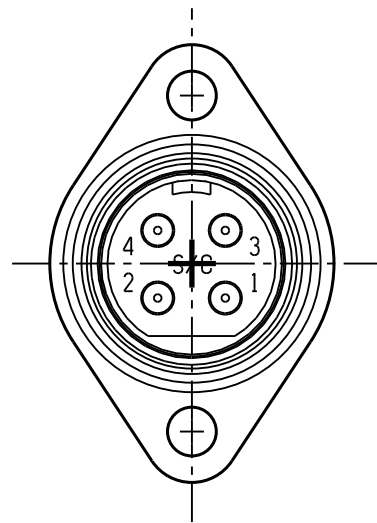


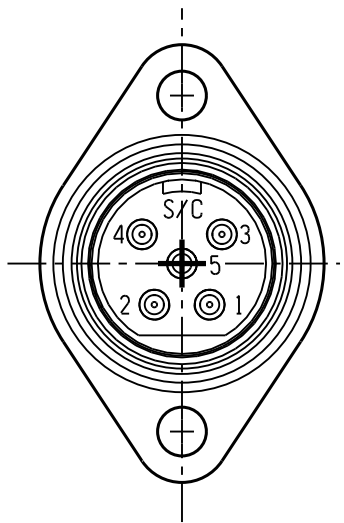
SL102M



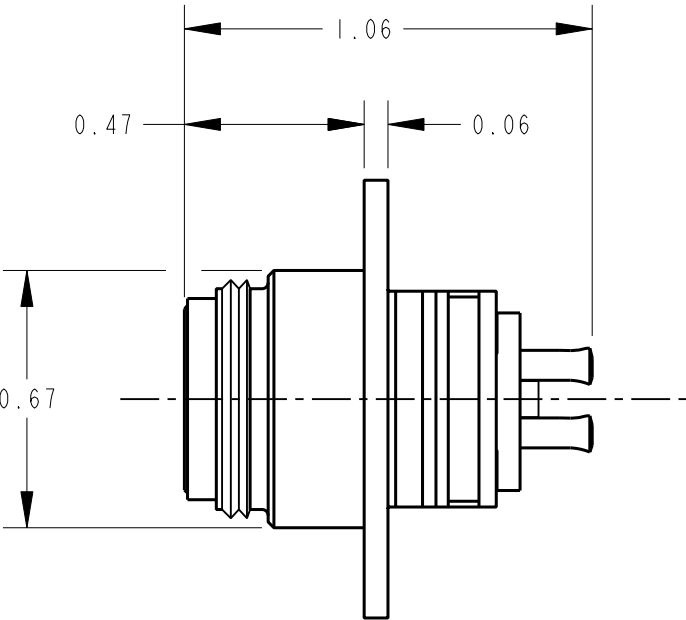
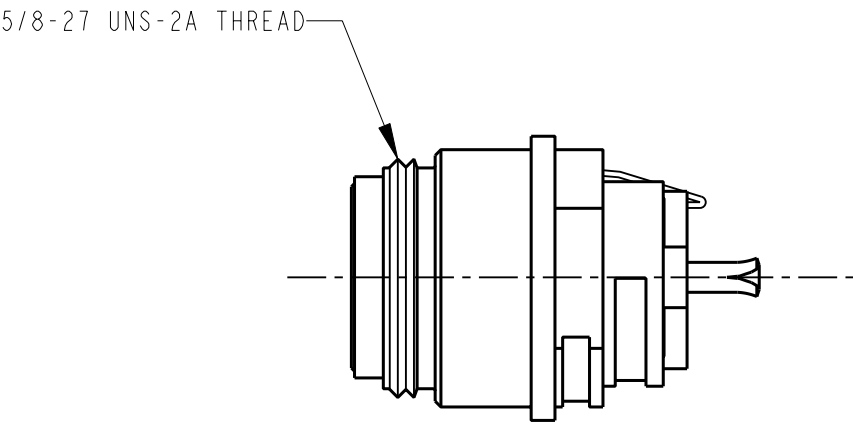
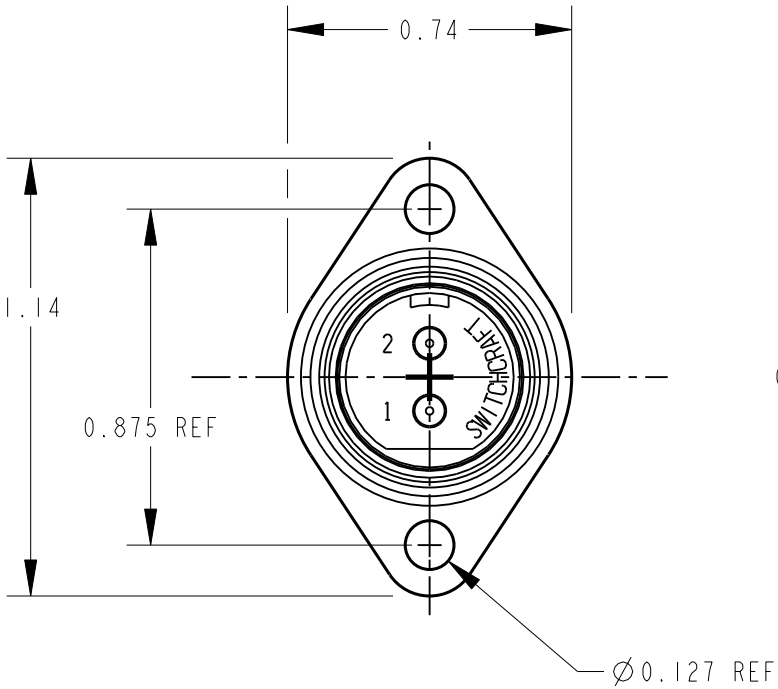
SL103M



SL104M



SL105M



CUSTOMER DRAWING

- NOTES:
- 1. HOUSING AND PIN ASSEMBLY SHIPPED UNASSEMBLED.
 - 2. MATERIALS:
HOUSING - DIE CAST, NICKEL PLATED
INSERT - GLASS REINFORCED THERMOPLASTIC, BLACK
PINS - COPPER ALLOY, SILVER PLATED
LATCH - STEEL, NICKEL PLATED
 - 3. THESE PRODUCTS ARE RoHS COMPLIANT.

					★ STAR SYMBOL DENOTES CRITICAL DIMENSION	THIS DRAWING DESCRIBES A DESIGN CONSIDERED PROPRIETARY IN NATURE, DEVELOPED AND MANUFACTURED BY SWITCHCRAFT INC. AND IS RELEASED ON A CONFIDENTIAL BASIS FOR IDENTIFICATION PURPOSES ONLY.								
					UNLESS OTHERWISE SPECIFIED 1. ALL DIMENSIONS IN INCHES -TWO PLACE DECIMALS ±0.01 -THREE PLACE DECIMALS ±0.005 -ANGLES ±1° -ALL DIA. CONCENTRIC WITHIN 0.005 T.I.R. 2. FEATURES ON THE SAME CENTERLINE MUST BE ALIGNED WITHIN ±0.002 3. REMOVE ALL BURRS	SIZE	WIDTH		MULT		LBS/M		TEMPER	
						FINISH SPEC No.					MATERIAL SPEC No.			
						FIRST USED ON			SCALE DRAWING SCALE		Switchcraft®			
						DATE DRAWN	BY	CHKD	APVD					
						30-Nov-06	TJK	TJK 11-30-06	TJK 2-3-10		SHEET OF			
F	21506	1-10-11	TJK	TJK		NAME SLIM-LINE MALE FLANGE MOUNT CONNECTOR					PART No. SL10_M SERIES		REV F	
REV	ECO NUMBER	DATE	BY	APVD										
REVISIONS					DO NOT SCALE DRAWING									

Mouser Electronics

Authorized Distributor

Click to View Pricing, Inventory, Delivery & Lifecycle Information:

Switchcraft:

[SL105M](#) [SL104M](#) [SL102M](#) [SL103M](#)