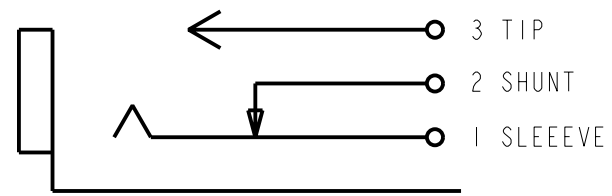
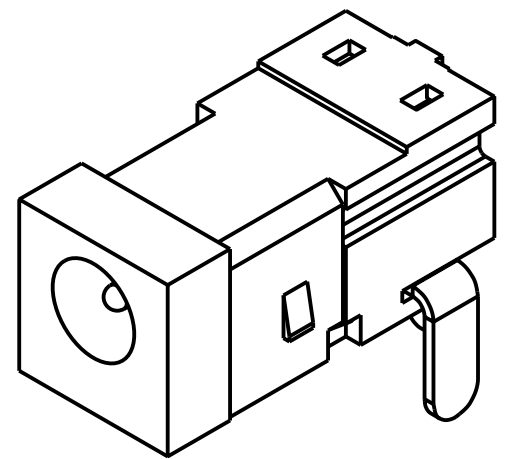
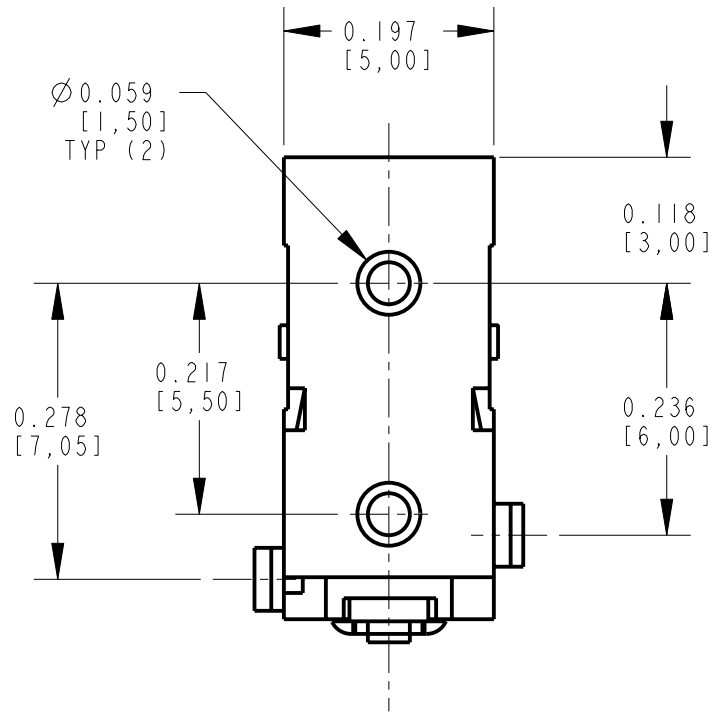
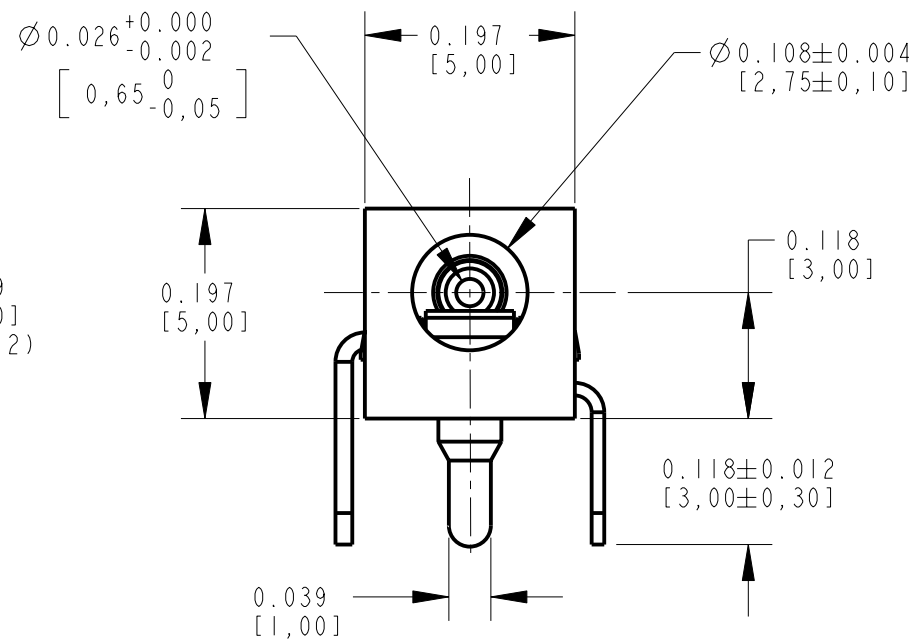


PC BOARD LAYOUT  
COMPONENT SIDE



SCHEMATIC

- NOTES:
- ALL DIMENSIONS ARE REFERENCE.
  - MATERIALS:  
HOUSING: THERMOPLASTIC, BLACK  
SPRING CONTACT: COPPER ALLOY, SILVER PLATED  
SHUNT TERMINAL: COPPER ALLOY, SILVER PLATED  
CENTER PIN: COPPER ALLOY, SILVER PLATED
  - THIS PRODUCT IS RoHS COMPLIANT

CUSTOMER DRAWING

					★ STAR SYMBOL DENOTES CRITICAL DIMENSION	THIS DRAWING DESCRIBES A DESIGN CONSIDERED PROPRIETARY IN NATURE, DEVELOPED AND MANUFACTURED BY SWITCHCRAFT INC. AND IS RELEASED ON A CONFIDENTIAL BASIS FOR IDENTIFICATION PURPOSES ONLY.						
					UNLESS OTHERWISE SPECIFIED 1. ALL DIMENSIONS IN INCHES - TWO PLACE DECIMALS ±0.01 - THREE PLACE DECIMALS ±0.005 - ANGLES ±1° - ALL DIA. CONCENTRIC WITHIN 0.005 T.I.R. 2. FEATURES ON THE SAME CENTERLINE MUST BE ALIGNED WITHIN ±0.002 3. REMOVE ALL BURRS	SIZE	WIDTH	MULT	LBS/M	TEMPER		
						FINISH			MATERIAL			
						SPEC No.			SPEC No.			
						FIRST USED ON		SCALE		<b>Switchcraft®</b>		
								5 : 1				
A	25129	9-9-05	JL	MW		DATE DRAWN	BY	CHKD	APVD			
						09-Sep-05	JL	MW 9-9-05	MW 9-9-05		SHEET   OF	
REV	ECO NUMBER	DATE	BY	APVD		NAME RIGHT ANGLE PCB DC JACK Ø0.65mm PIN, RoHS					PART No. RAPC752X	REV A
REVISIONS					DO NOT SCALE DRAWING							

# Mouser Electronics

Authorized Distributor

Click to View Pricing, Inventory, Delivery & Lifecycle Information:

[Switchcraft:](#)

[RAPC752X](#) [RAPC752](#)