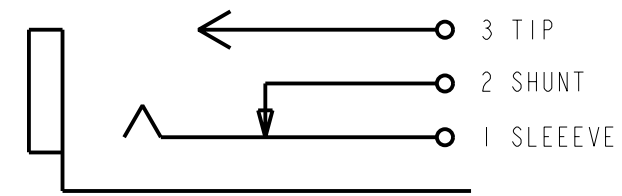
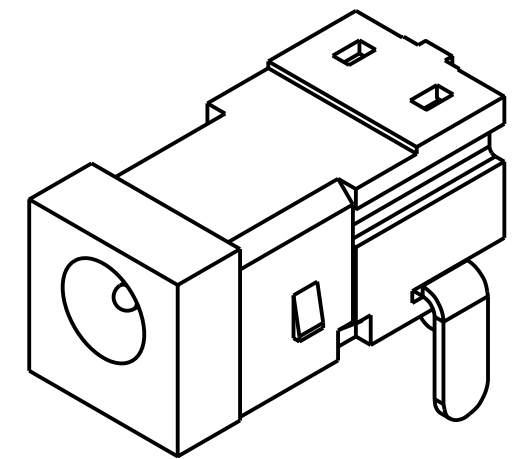
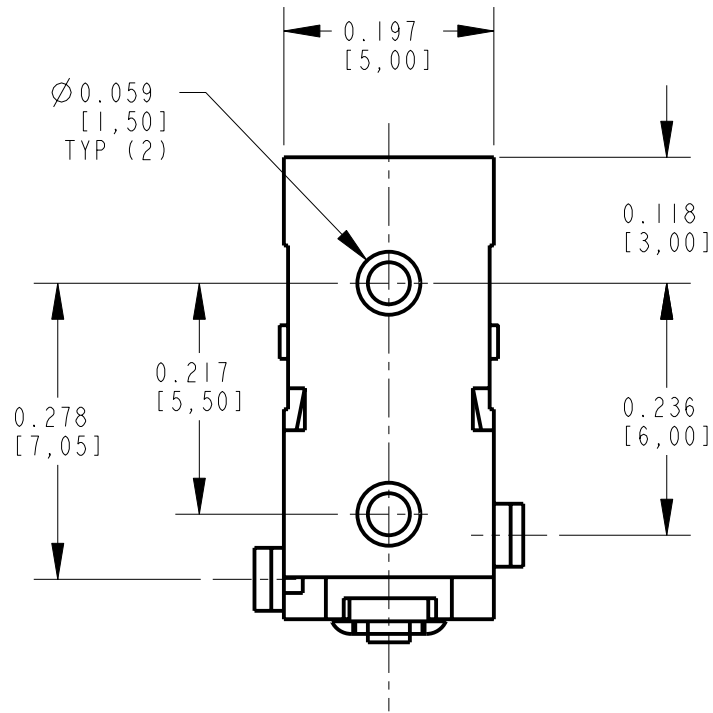
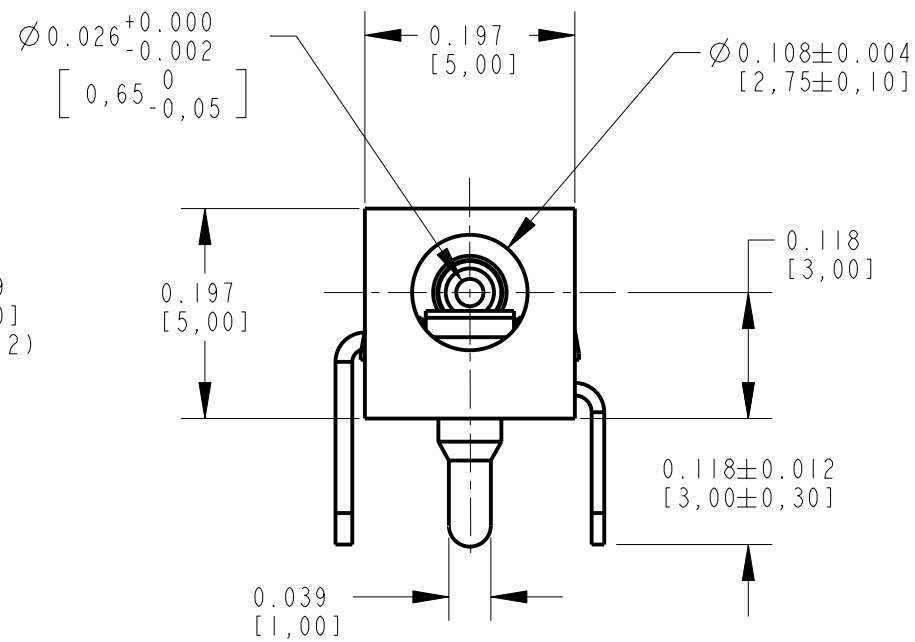


PC BOARD LAYOUT
COMPONENT SIDE



SCHEMATIC

- NOTES:
1. ALL DIMENSIONS ARE REFERENCE.
 2. MATERIALS:
HOUSING: THERMOPLASTIC, BLACK
SPRING CONTACT: COPPER ALLOY, SILVER PLATED
SHUNT TERMINAL: COPPER ALLOY, SILVER PLATED
CENTER PIN: COPPER ALLOY, SILVER PLATED
 3. THIS PRODUCT IS RoHS COMPLIANT

CUSTOMER DRAWING

					<div>★ STAR SYMBOL DENOTES CRITICAL DIMENSION</div>	THIS DRAWING DESCRIBES A DESIGN CONSIDERED PROPRIETARY IN NATURE, DEVELOPED AND MANUFACTURED BY SWITCHCRAFT INC. AND IS RELEASED ON A CONFIDENTIAL BASIS FOR IDENTIFICATION PURPOSES ONLY.												
					<div>UNLESS OTHERWISE SPECIFIED</div> <div>1. ALL DIMENSIONS IN INCHES - TWO PLACE DECIMALS ±0.01 - THREE PLACE DECIMALS ±0.005 - ANGLES ±1° - ALL DIA. CONCENTRIC WITHIN 0.005 T.I.R.</div> <div>2. FEATURES ON THE SAME CENTERLINE MUST BE ALIGNED WITHIN ±0.002</div> <div>3. REMOVE ALL BURRS</div> <div>DO NOT SCALE DRAWING</div>	SIZE		WIDTH		MULT		LBS/M		TEMPER				
						FINISH				MATERIAL								
						SPEC No.				SPEC No.								
						FIRST USED ON				SCALE								
										5 : 1								
						DATE DRAWN		BY	CHKD		APVD		<div>Switchcraft®</div>					
						09-Sep-05		JL	MW 9-9-05		MW 9-9-05							
A	25129	9-9-05	JL	MW											SHEET OF			
REV	ECO NUMBER	DATE	BY	APVD			NAME				PART No.				REV			
REVISIONS							RIGHT ANGLE PCB DC JACK				RAPC752X				A			
						Ø0.65mm PIN, RoHS												

Mouser Electronics

Authorized Distributor

Click to View Pricing, Inventory, Delivery & Lifecycle Information:

[Switchcraft:](#)

[RAPC752X](#) [RAPC752](#)