

SCHEMATIC

NOTES:

1. ALL DIMENSIONS ARE REFERENCE.

2. MATERIALS:

HOUSING: THERMOPLASTIC, BLACK

SPRING CONTACT: COPPER ALLOY, SILVER PLATED

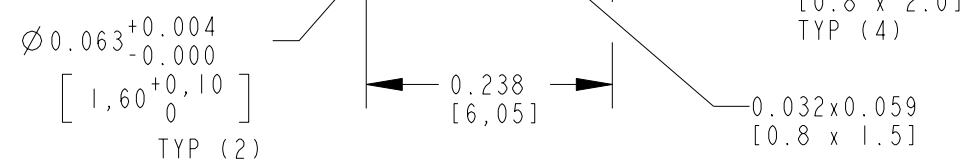
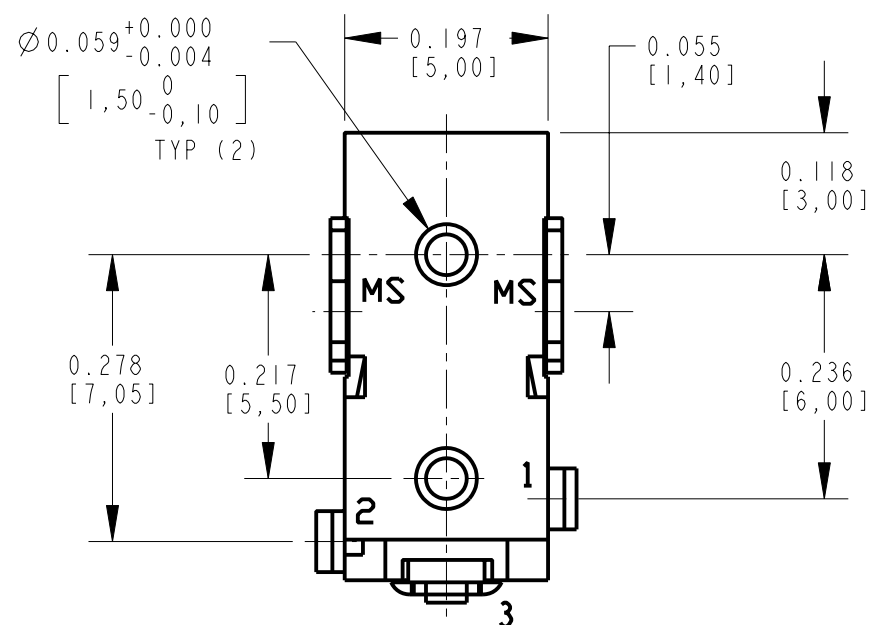
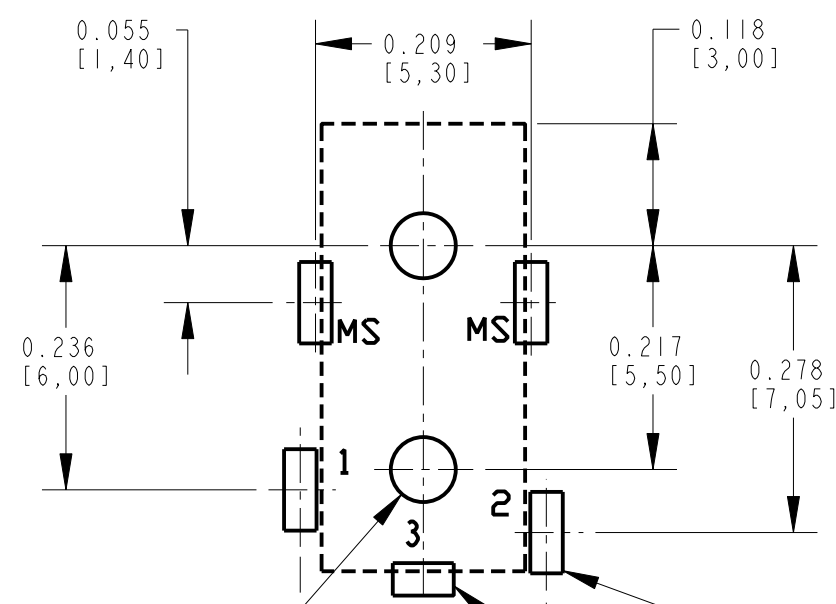
SHUNT TERMINAL: COPPER ALLOY, SILVER PLATED

CENTER PIN: COPPER ALLOY, SILVER PLATED

SHIELD: STEEL, NICKEL PLATED

3. THIS PRODUCT IS RoHS COMPLIANT

CUSTOMER DRAWING



PC BOARD LAYOUT
COMPONENT SIDE

					★ STAR SYMBOL DENOTES CRITICAL DIMENSION	THIS DRAWING DESCRIBES A DESIGN CONSIDERED PROPRIETARY IN NATURE, DEVELOPED AND MANUFACTURED BY SWITCHCRAFT INC. AND IS RELEASED ON A CONFIDENTIAL BASIS FOR IDENTIFICATION PURPOSES ONLY.											
					UNLESS OTHERWISE SPECIFIED	SIZE		WIDTH		MULT		LBS/M		TEMPER			
					1. ALL DIMENSIONS IN INCHES - TWO PLACE DECIMALS ±0.01 - THREE PLACE DECIMALS ±0.005 - ANGLES ±1° - ALL DIA. CONCENTRIC WITHIN 0.005 T.I.R.	FINISH				MATERIAL							
						SPEC No.				SPEC No.							
					2. FEATURES ON THE SAME CENTERLINE MUST BE ALIGNED WITHIN ±0.002	FIRST USED ON				SCALE 5 : 1		Switchcraft®					
						DATE DRAWN		BY	CHKD	APVD							
A	25129	9-9-05	JL	MW	3. REMOVE ALL BURRS	09-Sep-05		JL	MW 9-9-05	MW 9-9-05		SHEET OF					
REV	ECO NUMBER	DATE	BY	APVD		NAME				PART No.				REV			
REVISIONS					DO NOT SCALE DRAWING	RIGHT ANGLE PSB DC JACK SHIELDED, Ø0.65mm PIN, RoHS						RAPC752SX				A	

Mouser Electronics

Authorized Distributor

Click to View Pricing, Inventory, Delivery & Lifecycle Information:

Switchcraft:

[RAPC752SX](#) [RAPC752S](#)