

NOTES:

1. ALL DIMENSIONS ARE REFERENCE.

2. MATERIALS:

HOUSING: THERMOPLASTIC, BLACK

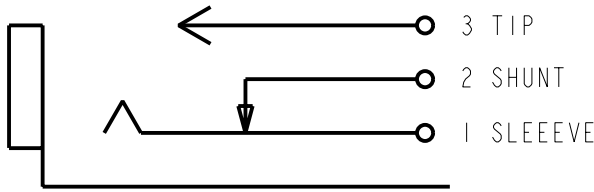
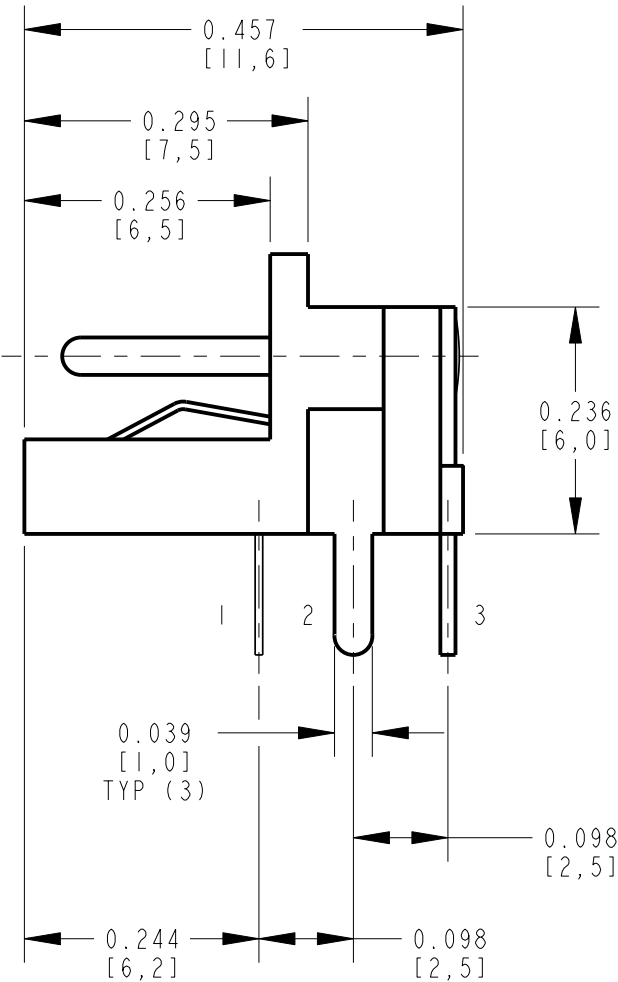
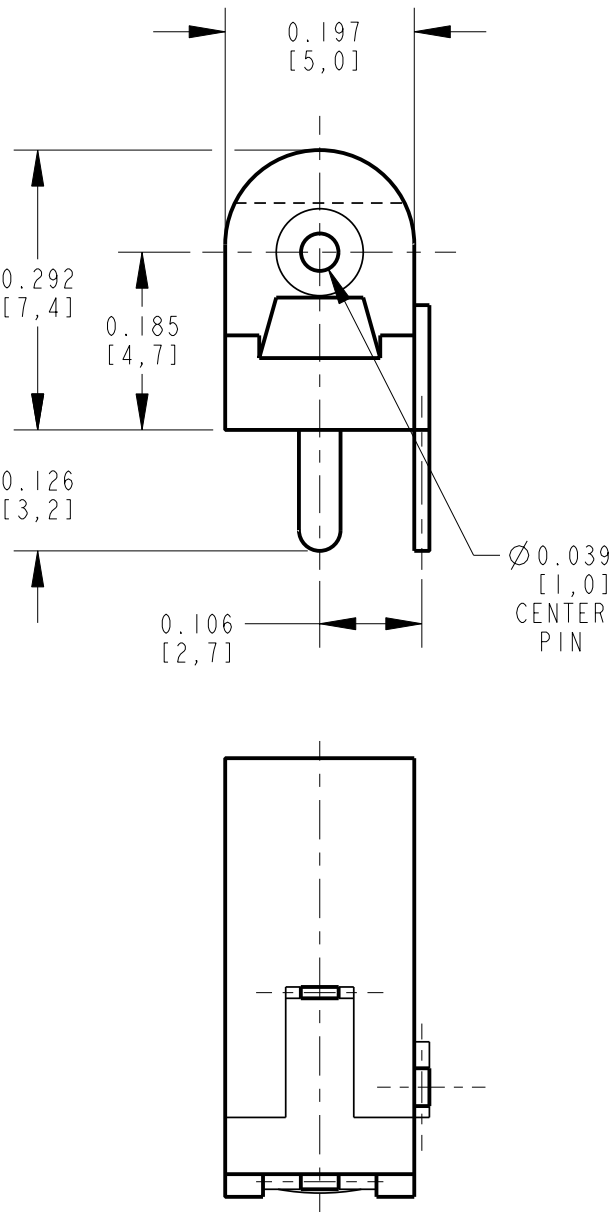
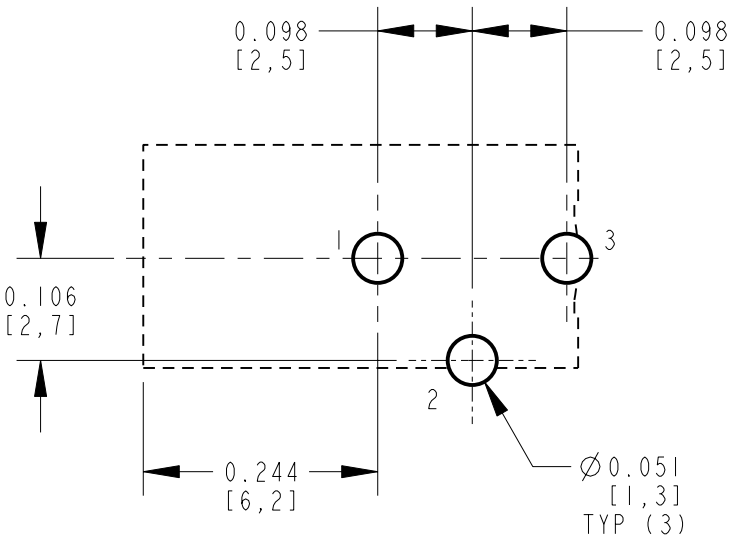
SPRING CONTACT: COPPER ALLOY, TIN PLATED - LEAD FREE

SHUNT TERMINAL: COPPER ALLOY, TIN PLATED - LEAD FREE

PIN CONTACT: COPPER ALLOY, TIN PLATED - LEAD FREE

CENTER PIN: COPPER ALLOY, NICKEL PLATED

3. THIS PRODUCT IS RoHS COMPLIANT



PC BOARD LAYOUT  
COMPONENT SIDE

- ★ STAR SYMBOL DENOTES CRITICAL DIMENSION
- UNLESS OTHERWISE SPECIFIED
- ALL DIMENSIONS IN INCHES  
- TWO PLACE DECIMALS  $\pm 0.01$   
- THREE PLACE DECIMALS  $\pm 0.005$   
- ANGLES  $\pm 1^\circ$   
- ALL DIA. CONCENTRIC WITHIN 0.005 T.I.R.
  - FEATURES ON THE SAME CENTERLINE MUST BE ALIGNED WITHIN  $\pm 0.002$
  - REMOVE ALL BURRS

THIS DRAWING DESCRIBES A DESIGN CONSIDERED PROPRIETARY IN NATURE, DEVELOPED AND MANUFACTURED BY SWITCHCRAFT INC. AND IS RELEASED ON A CONFIDENTIAL BASIS FOR IDENTIFICATION PURPOSES ONLY.									
SIZE		WIDTH		MULT		LBS/M		TEMPER	
FINISH SPEC No.					MATERIAL SPEC No.				
FIRST USED ON				SCALE 5=1		<b>Switchcraft<sup>®</sup></b>			
DATE DRAWN	BY	CHKD	APVD						
29-Aug-05	JL	MW 8-29-05	MW 8-29-05			SHEET   OF			
NAME RIGHT ANGLE PCB DC JACK, OPEN FRAME, Ø1.0MM PIN, RoHS					PART No. RAPC7420FX			REV A	

CUSTOMER DRAWING

REV	ECO NUMBER	DATE	BY	APVD
A	25129	8-29-05	JL	MW
REVISIONS				

DO NOT SCALE DRAWING

# Mouser Electronics

Authorized Distributor

Click to View Pricing, Inventory, Delivery & Lifecycle Information:

[Switchcraft:](#)

[RAPC742OF](#)