

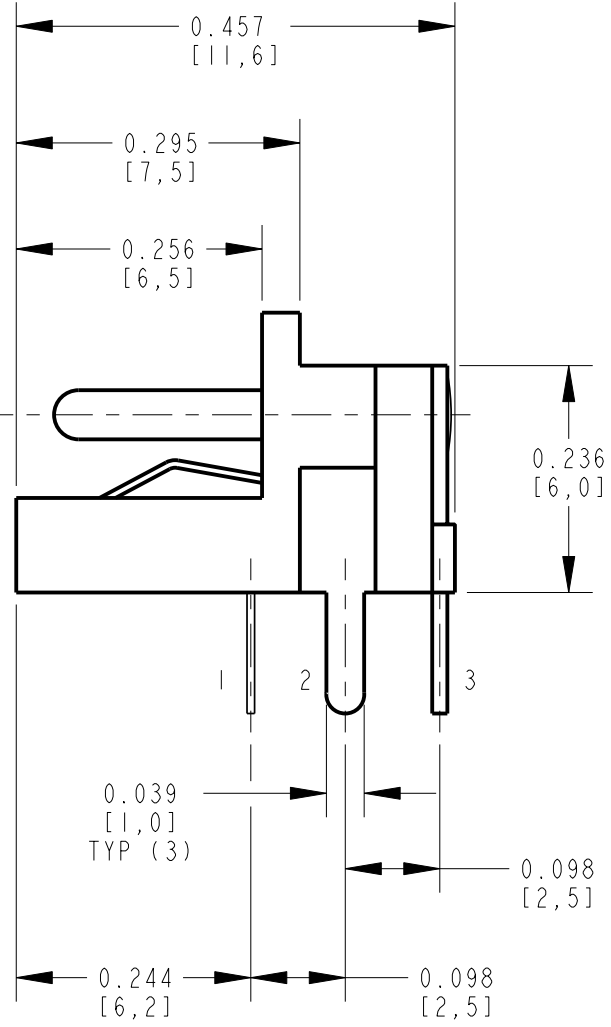
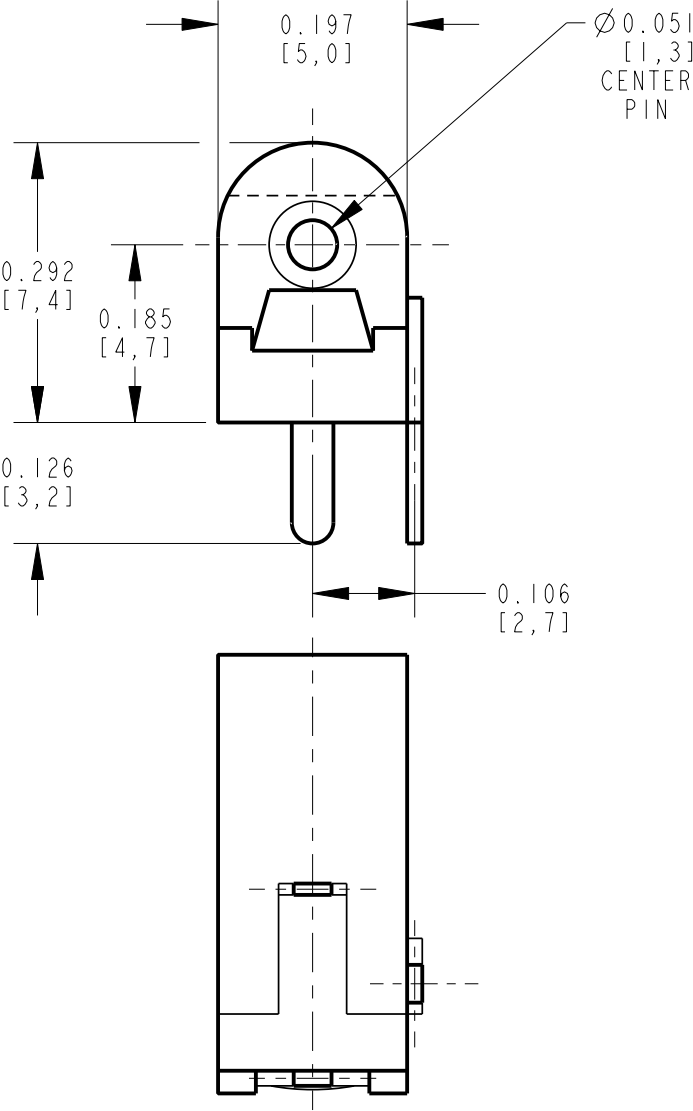
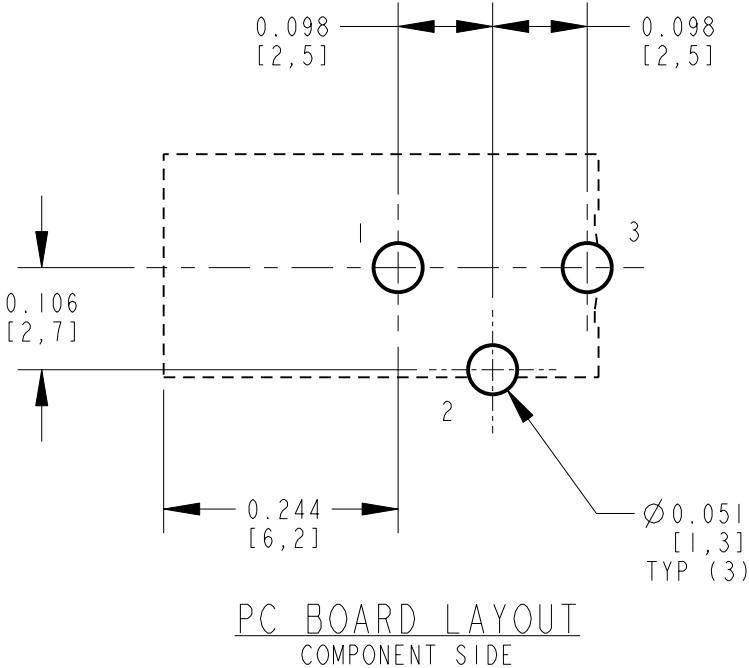
NOTES:

1. ALL DIMENSIONS ARE REFERENCE.

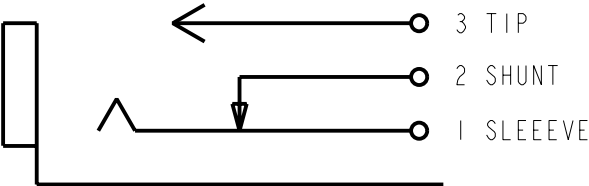
2. MATERIALS:

- HOUSING: THERMOPLASTIC, BLACK
- SPRING CONTACT: COPPER ALLOY, TIN PLATED - LEAD FREE
- SHUNT TERMINAL: COPPER ALLOY, TIN PLATED - LEAD FREE
- PIN CONTACT: COPPER ALLOY, TIN PLATED - LEAD FREE
- CENTER PIN: COPPER ALLOY, NICKEL PLATED

3. THIS PRODUCT IS RoHS COMPLIANT



CUSTOMER DRAWING



					<div>★ STAR SYMBOL DENOTES CRITICAL DIMENSION</div>	<div>THIS DRAWING DESCRIBES A DESIGN CONSIDERED PROPRIETARY IN NATURE, DEVELOPED AND MANUFACTURED BY SWITCHCRAFT INC. AND IS RELEASED ON A CONFIDENTIAL BASIS FOR IDENTIFICATION PURPOSES ONLY.</div>						
					<div>UNLESS OTHERWISE SPECIFIED</div> <div>1. ALL DIMENSIONS IN INCHES -TWO PLACE DECIMALS ±0.01 -THREE PLACE DECIMALS ±0.005 -ANGLES ±1° -ALL DIA. CONCENTRIC WITHIN 0.005 T.I.R.</div> <div>2. FEATURES ON THE SAME CENTERLINE MUST BE ALIGNED WITHIN ±0.002</div> <div>3. REMOVE ALL BURRS</div>	SIZE	WIDTH	MULT	LBS/M	TEMPER		
						FINISH SPEC No.			MATERIAL SPEC No.			
						FIRST USED ON		SCALE 5=1		<div>Switchcraft®</div>		
						DATE DRAWN 29-Aug-05	BY JL	CHKD MW 8-29-05	APVD MW 8-29-05			
A	25129	8-29-05	JL	MW						SHEET   OF		
REV	ECO NUMBER	DATE	BY	APVD		NAME RIGHT ANGLE PCB DC JACK, OPEN FRAME, Ø1.3MM PIN, RoHS			PART No. RAPC7320FX		REV A	
REVISIONS					DO NOT SCALE DRAWING							

# Mouser Electronics

Authorized Distributor

Click to View Pricing, Inventory, Delivery & Lifecycle Information:

Switchcraft:

[RAPC732OFX](#) [RAPC732OF](#)