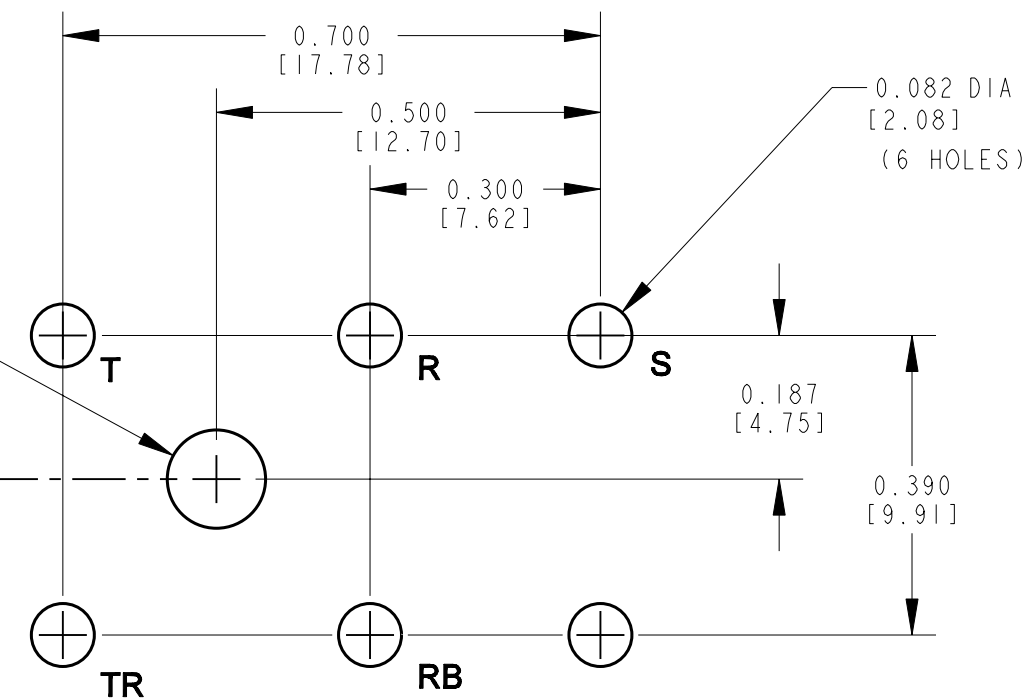
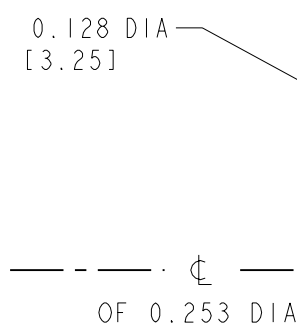
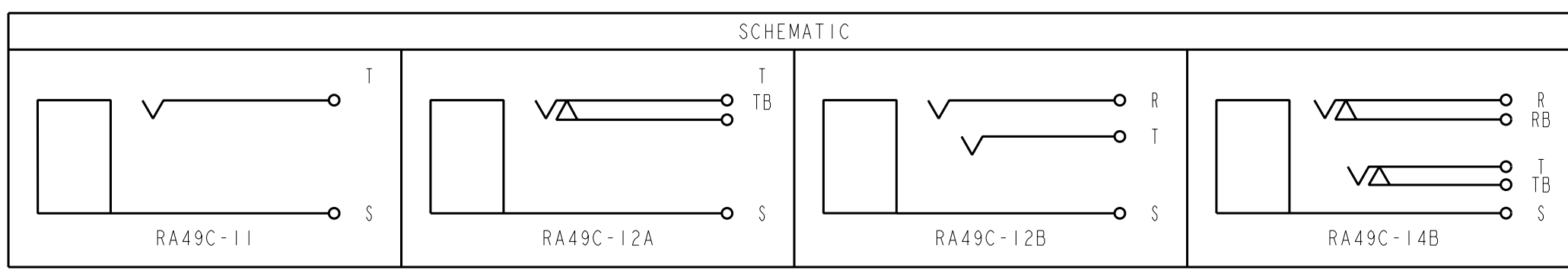


HOUSING: BLACK THERMOPLASTIC
POLYESTER. 94V0
CONTACT SPRINGS: TIN PLATED
SPRING TEMP. NICKEL SILVER.
HARDWARE: NICKEL PLATED BRASS.
METAL BUSHING: NICKEL PLATED BRASS
SLEEVE SPRING: TINNED PHOS.BRONZE.



PCB HOLE PATTERN
COMPONENT SIDE



<div> <div>☆</div> <div>STAR SYMBOL DENOTES CRITICAL DIMENSION. SEE SFC ENGINEERING STANDARD ES-0001</div> </div>					<div> <div>THIS DRAWING DESCRIBES A DESIGN CONSIDERED PROPRIETARY IN NATURE, DEVELOPED AND MANUFACTURED BY SWITCHCRAFT INC. AND IS RELEASED ON A CONFIDENTIAL BASIS FOR IDENTIFICATION PURPOSE ONLY.</div> </div>				
UNLESS OTHERWISE SPECIFIED					<div> <div>SIZE</div> <div>WIDTH</div> <div>MULT</div> <div>LBS./M</div> <div>TEMPER</div> </div>				
F	ECO #19930	8-17-95	DA	TAO	<div> <div>FINISH</div> <div>SPEC. NO.</div> </div>			<div> <div>MATERIAL</div> <div>SPEC. NO.</div> </div>	
E	ECO #19704	3-24-95	RC	GHJ	<div> <div>FIRST USED ON</div> <div>SCALE</div> <div>I = 0.25</div> </div>			<div> <div>Switchcraft®</div> </div>	
D	ECO#15763	2-16-90	LR	VL	<div> <div>DATE DRAWN</div> <div>BY</div> <div>CHK'D</div> <div>APP'D</div> </div>			<div> <div>4-15-88</div> <div>RLD</div> <div>VL</div> <div>AS</div> <div>5-1-89</div> <div>5-2-89</div> </div>	
C	ECO 15105	10-12-89	TW	VL	<div> <div>NAME</div> <div>JACK ASSEMBLY</div> <div>(METAL BUSHING)</div> </div>			<div> <div>PART NO.</div> <div>RA49C-SER</div> <div>F</div> </div>	
B	RELEASED TO PROD	4-21-89	RLD	AS	<div> <div>DO NOT SCALE DRAWING</div> </div>			<div> <div>ISSUE</div> <div>1</div> </div>	
OA	PRELIM CUST DWG	4-15-88	RLD						
ISSUE	CHANGE NO.	DATE	BY	APP'D					
<div> <div>REVISIONS</div> </div>									

[illegible]

Mouser Electronics

Authorized Distributor

Click to View Pricing, Inventory, Delivery & Lifecycle Information:

Switchcraft:

[RA49C14B](#) [RA49C11](#) [RA49C12A](#) [RA49C12B](#) [RA70C11](#) [RA70C12A](#) [RA70C12B](#) [RA70C14B](#)