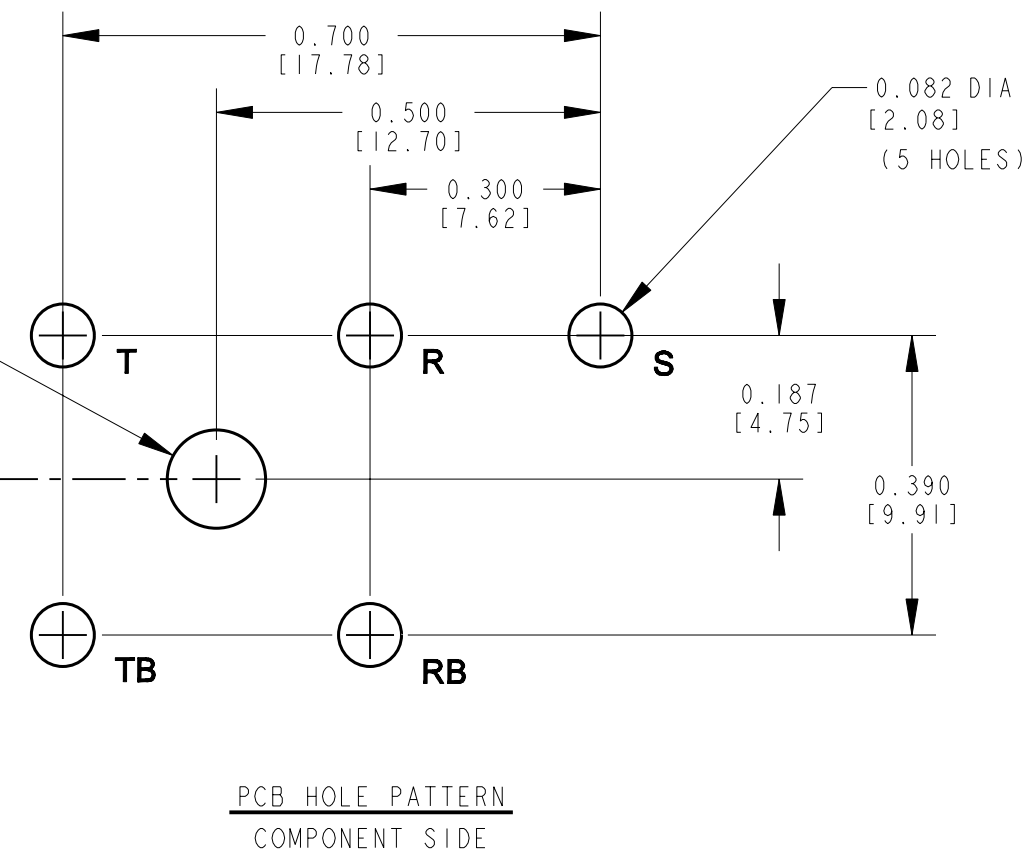
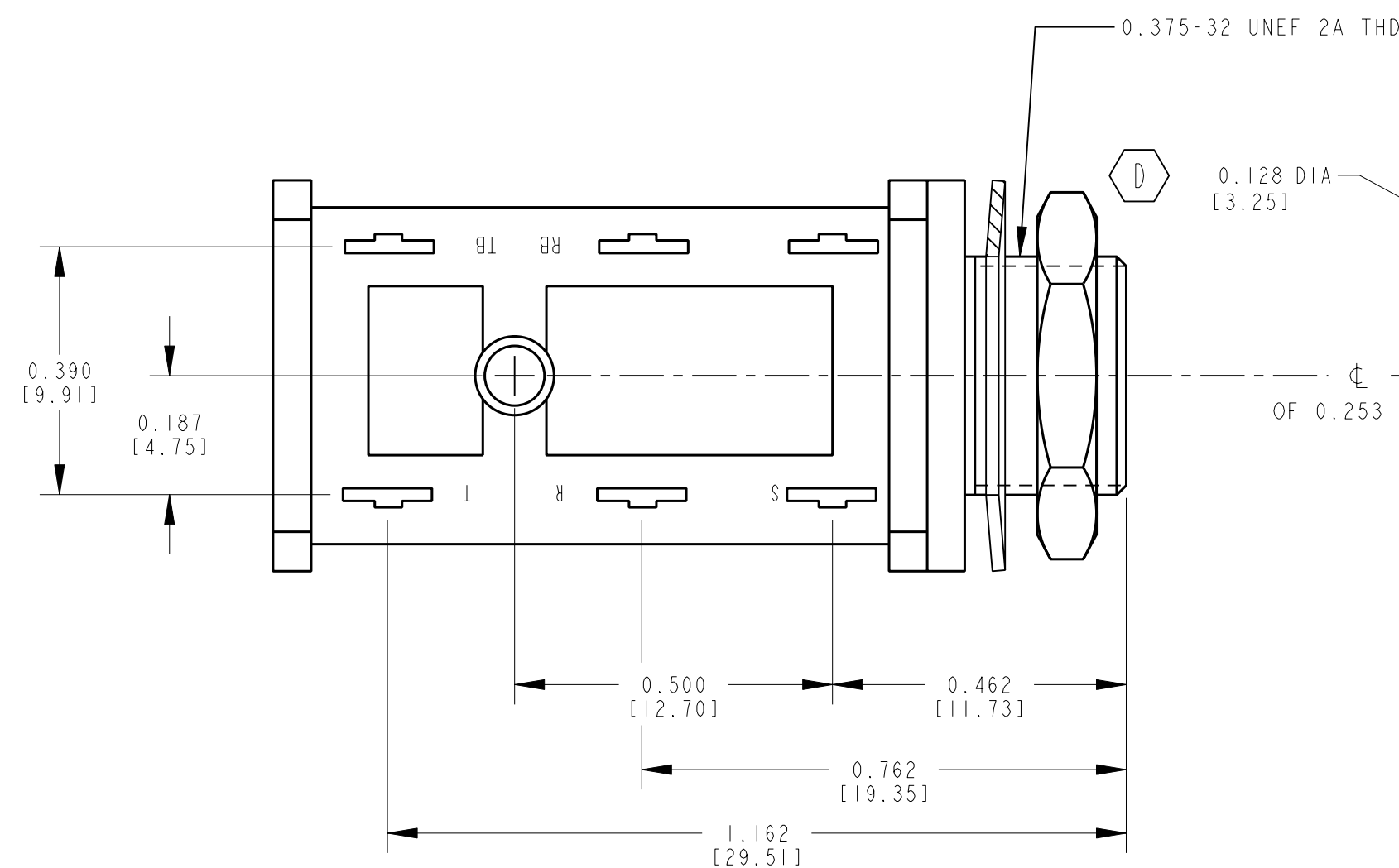


MATERIAL SPECIFICATIONS
HOUSING: BLACK THERMOPLASTIC
POLYESTER. 94V0
CONTACT SPRINGS: TIN PLATED
SPRING TEMP. NICKEL SILVER.
HARDWARE: NICKEL PLATED BRASS.

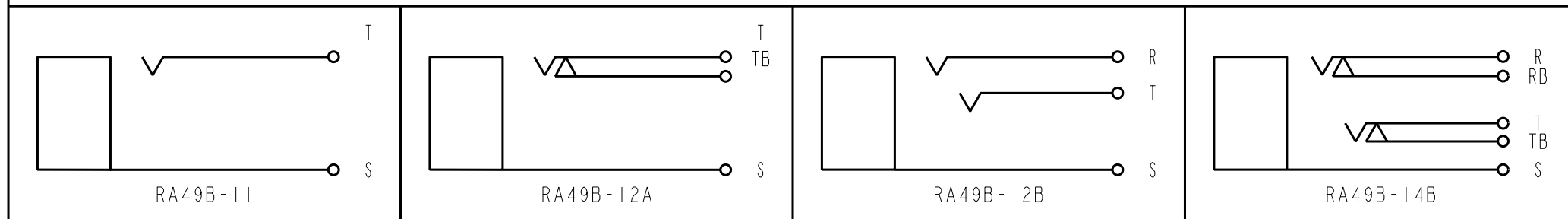


D

CUSTOMER DRAWING

CAD/CAM DWG. NO.
s.ra49b_cd
SHEET 1 OF 1

SCHEMATIC



				★ STAR SYMBOL DENOTES CRITICAL DIMENSION. SEE S/C ENGINEERING STANDARD ES-0001		THIS DRAWING DESCRIBES A DESIGN CONSIDERED PROPRIETARY IN NATURE, DEVELOPED AND MANUFACTURED BY SWITCHCRAFT INC. AND IS RELEASED ON A CONFIDENTIAL BASIS FOR IDENTIFICATION PURPOSE ONLY.													
				UNLESS OTHERWISE SPECIFIED		SIZE		WIDTH		MULT		LBS./M		TEMPER					
E		ECO #19704		3-24-95		RC		GHJ		FINISH				MATERIAL					
D		ECO#15763		2-16-90		LR		VL		SPEC. NO.				SPEC. NO.					
C		ECO 15105		10-11-89		TW		VL		FIRST USED ON				SCALE I = 0.25					
B		RELEASED TO PROD		4-21-89		RLD		AS		DATE DRAWN		BY		CHK'D		APP'D			
QA		PRELIM CUST DWG		3-11-88		RLD				3-11-88		RLD		VL		AS			
ISSUE		CHANGE NO.		DATE		BY		APP'D		3-11-88		RLD		5-1-89		5-2-89			
REVISIONS				DO NOT SCALE DRAWING				NAME				JACK ASSY				PART NO.			
												(INSULATED BUSHING)				RA49B-SER			
																E			

C ROUTING

Mouser Electronics

Authorized Distributor

Click to View Pricing, Inventory, Delivery & Lifecycle Information:

Switchcraft:

[RA49B14B](#) [RA49B12A](#) [RA49B11](#) [RA49B12B](#) [RA70B11](#) [RA70B12A](#) [RA70B12B](#) [RA70B14B](#)