

FIG A

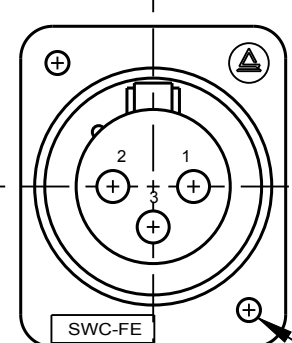


FIG B

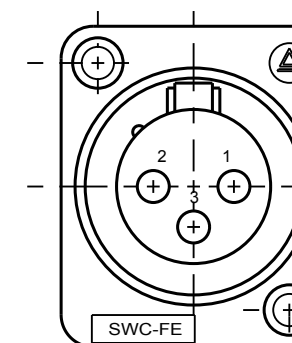


FIG J

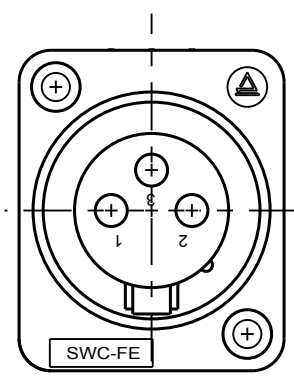


FIG C

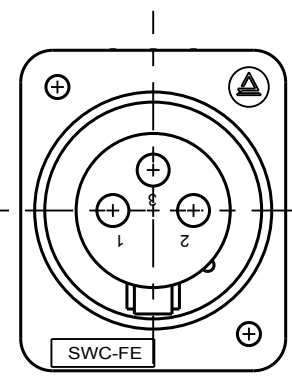


FIG D

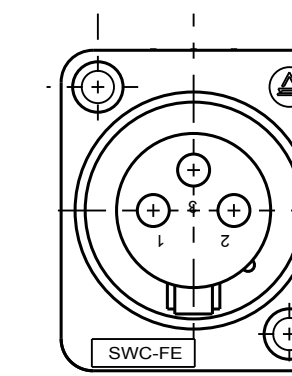


FIG K

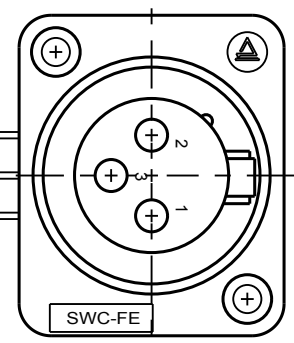


FIG E

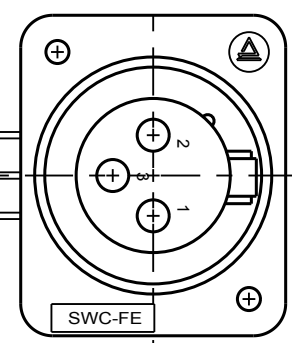


FIG F

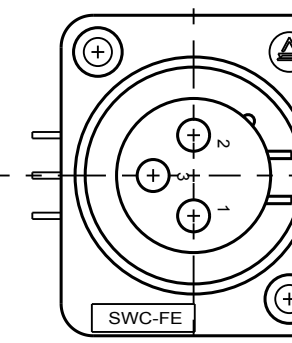


FIG L

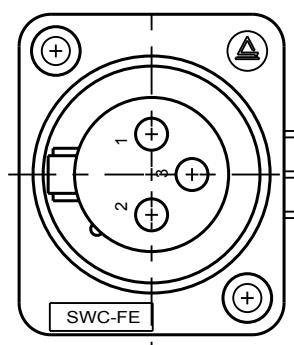


FIG G

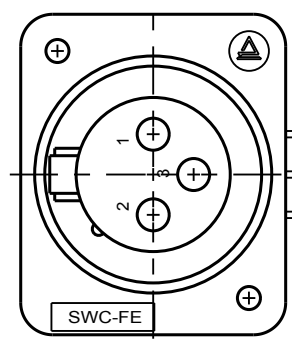


FIG H

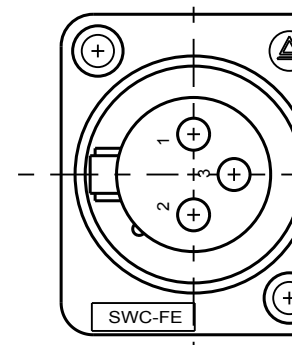
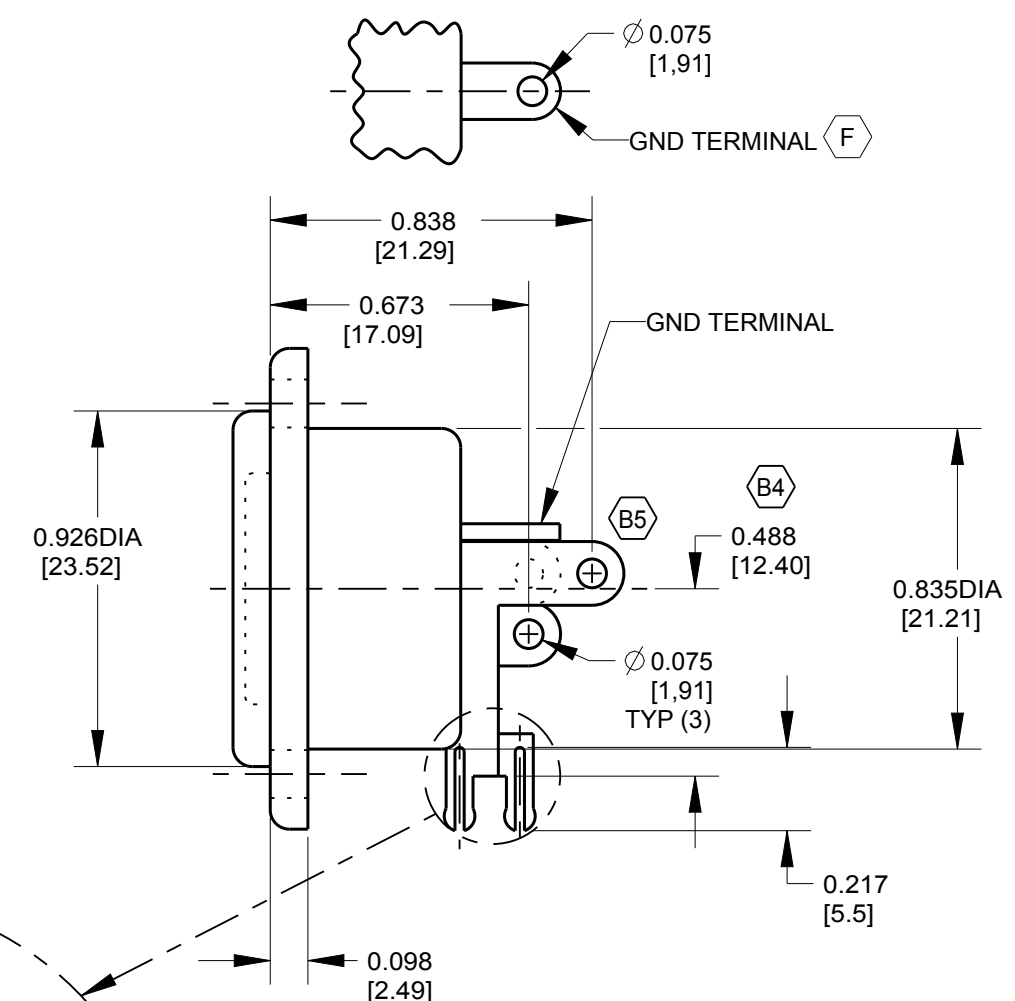
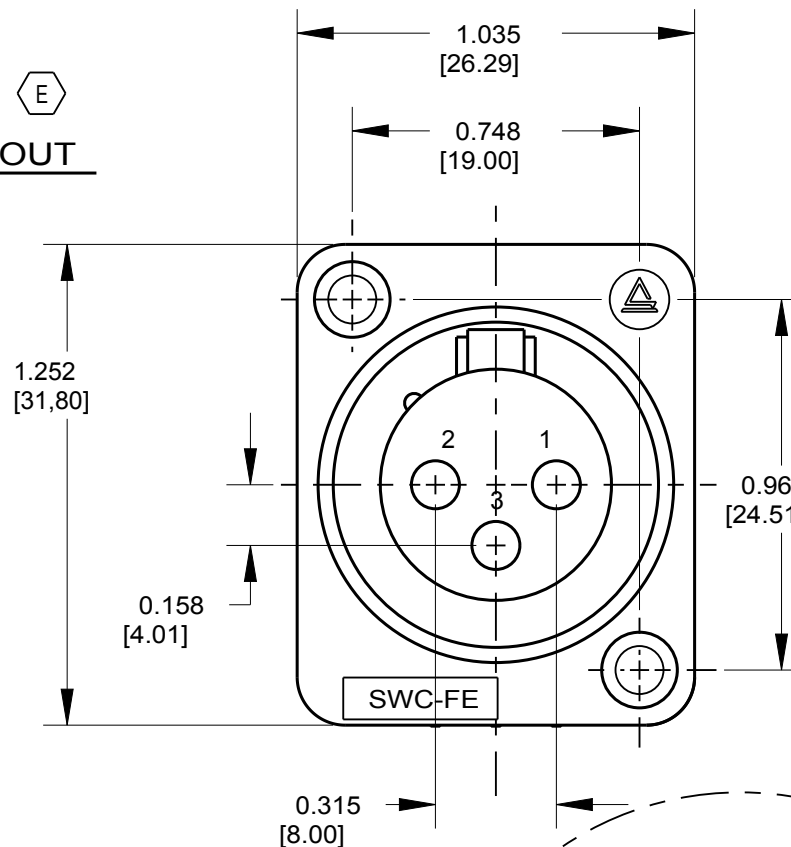
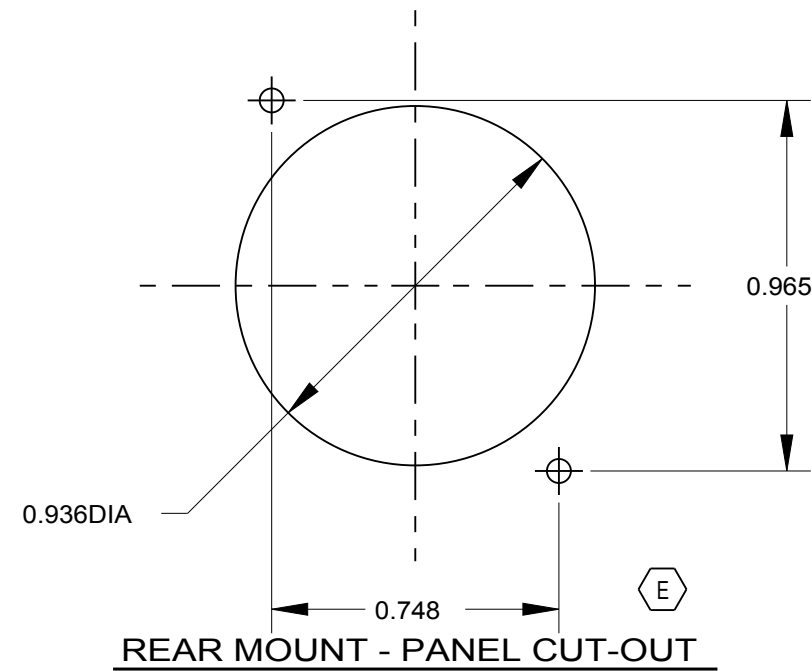
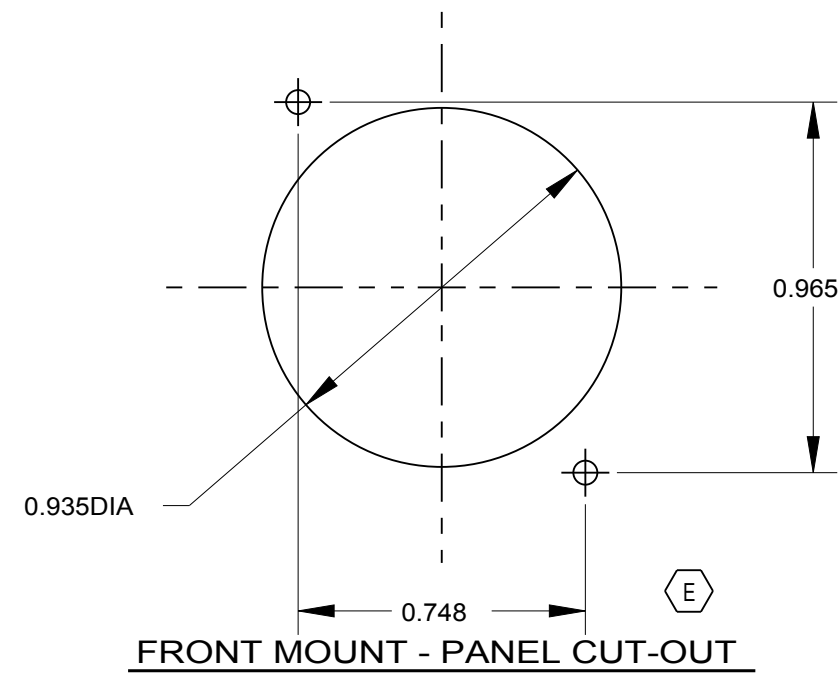
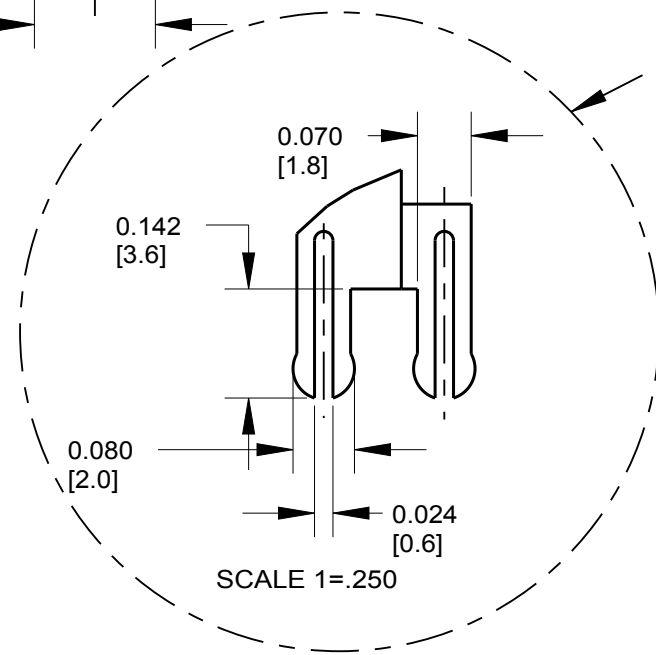
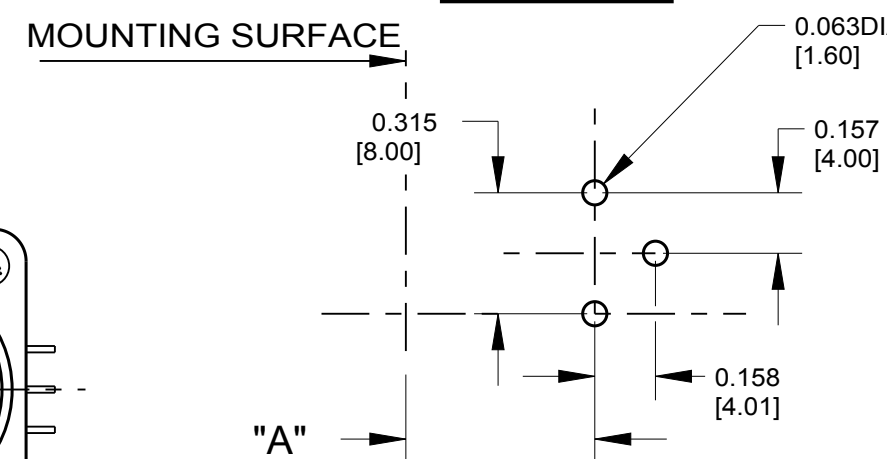


FIG M



PC PATTERN



**D MATERIALS:**  
HOUSING: NYLON TYPE 66  
FEMALE PINS: BRASS, TIN PLATED  
GROUND LUG: STEEL, TIN PLATED

CUSTOMER DRAWING

DIMENSIONS TYP FOR ALL FIGURES

C4

SHEET 1 OF 1

|           |  |            |  |  |  |          |  |   |  |                      |  |   |  |  |      |  |  |  |       |  |                  |  |                |  |                |  |              |  |       |  |            |  |
|-----------|--|------------|--|--|--|----------|--|---|--|----------------------|--|---|--|--|------|--|--|--|-------|--|------------------|--|----------------|--|----------------|--|--------------|--|-------|--|------------|--|
|           |  |            |  | ☆ STAR SYMBOL DENOTES CRITICAL DIMENSION, SEE S/C ENGINEERING STANDARD ES-0001 |  |          |  | THIS DRAWING DESCRIBES A DESIGN CONSIDERED PROPRIETARY IN NATURE, DEVELOPED AND MANUFACTURED BY SWITCHCRAFT INC. AND IS RELEASED ON A CONFIDENTIAL BASIS FOR IDENTIFICATION PURPOSE ONLY. |  |                      |  |   |  |  |      |  |  |  |       |  |                  |  |                |  |                |  |              |  |       |  |            |  |
| F         |  |            |  | ECO#27992  |  | 1-24-18  |  | PC  |  | TJK                  |  | UNLESS OTHERWISE SPECIFIED  |  |  |      |  | SIZE                                       |  | WIDTH |  | MULT             |  | LBS./M         |  | TEMPER         |  |              |  |       |  |            |  |
| E         |  |            |  | ECO #19433   |  | 12-5-94  |  | ES  |  | GHJ                  |  | 1. ALL DIMENSIONS IN INCHES<br>TWO PLACE DECIMAL<br>THREE PLACE DECIMAL<br>FRACTIONAL DIMENSIONS<br>ANGLES<br>ALL DIA'S CONCENTRIC WITH 0.005 T.I.R.<br>2. REMOVE ALL BURRS<br>3. MAKE NO DIMENSIONAL ALLOWANCES FOR APPLIED FINISHES (E.G. PLATING, PAINTING, ETC.)<br>4. HOLES ON THE SAME CENTERLINE MUST BE ALIGNED WITH CENTERLINE ±.002 |  |  |      |  | FINISH                                     |  |       |  | MATERIAL         |  |                |  |                |  |              |  |       |  |            |  |
| D         |  |            |  | ECO#17911  |  | 10-27-92 |  | LR  |  | GHJ                  |  |   |  |  |      |  | SPEC. NO.                                  |  |       |  | SPEC. NO.        |  |                |  |                |  |              |  |       |  |            |  |
| C         |  |            |  | ECO#17107  |  | 9-30-91  |  | LR  |  | EAF                  |  | DO NOT SCALE  |  |  |      |  | FIRST USED ON                              |  |       |  | SCALE<br>1 = 0.5 |  |                |  | Switchcraft®   |  |              |  |       |  |            |  |
| B         |  |            |  | ECO#16801  |  | 5-3-91   |  | SG  |  | GHJ                  |  |   |  |  |      |  | DATE DRAWN                                 |  |       |  | BY               |  | CHK'D          |  |                |  |              |  | APP'D |  |            |  |
| A         |  |            |  | RELEASED TO PROD   |  | 2-15-91  |  | LR  |  | GHJ                  |  |   |  |  |      |  | 2-15-91                                    |  |       |  | LR               |  | THS<br>2-25-91 |  | GHJ<br>2-25-91 |  |              |  |       |  |            |  |
| ISSUE     |  | CHANGE NO. |  | DATE   |  | BY       |  | APP'D   |  |                      |  |   |  |  | NAME |  | FEMALE 3 CONTACTS RIGHT<br>Q.G. CONNENCTOR |  |       |  |                  |  |                |  | PART NO.       |  | PD3FR SERIES |  |       |  | ISSUE<br>F |  |
| REVISIONS |  |            |  |  |  |          |  |   |  | DO NOT SCALE DRAWING |  |   |  |  |      |  |  |  |       |  |                  |  |                |  |                |  |              |  |       |  |            |  |

SCALE:1=.750

# Mouser Electronics

Authorized Distributor

Click to View Pricing, Inventory, Delivery & Lifecycle Information:

Switchcraft:

[PD3FRA1](#) [PD3FRA2](#) [PD3FRML1](#) [PD3FRML2](#)