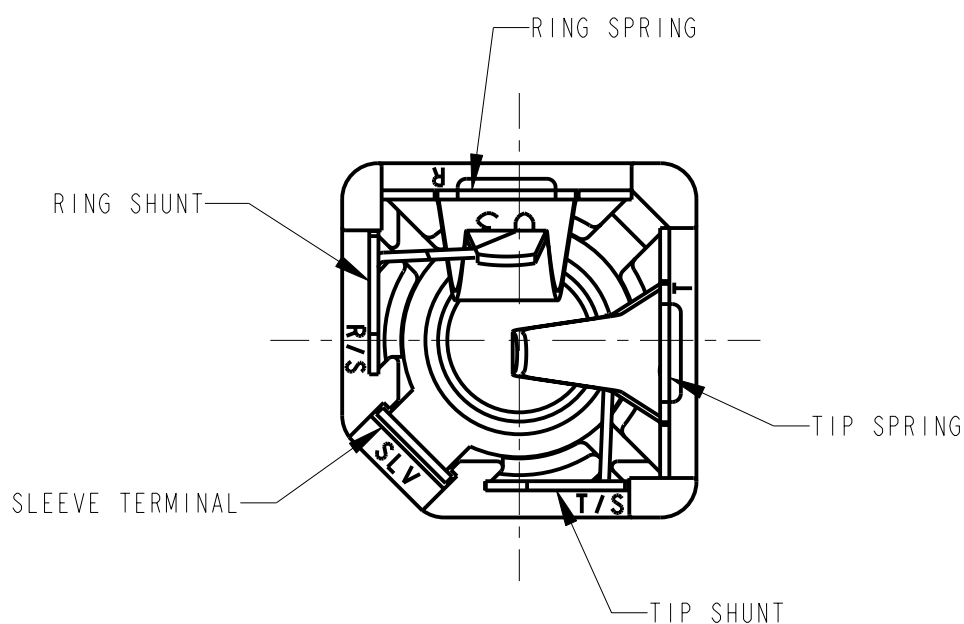


PCS TERMINAL OPTION
PCB LAYOUT - COMPONENT SIDE

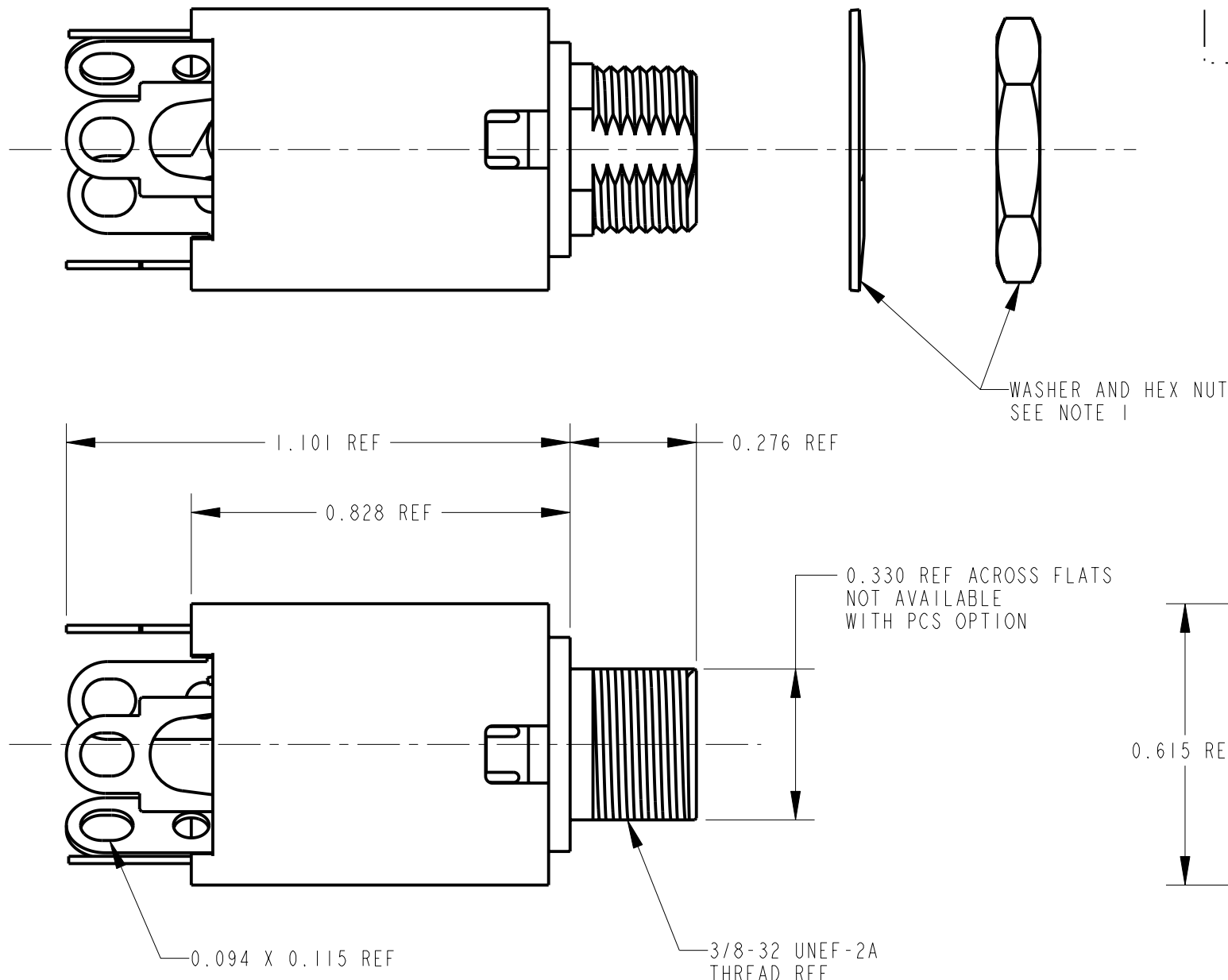


NOTES:

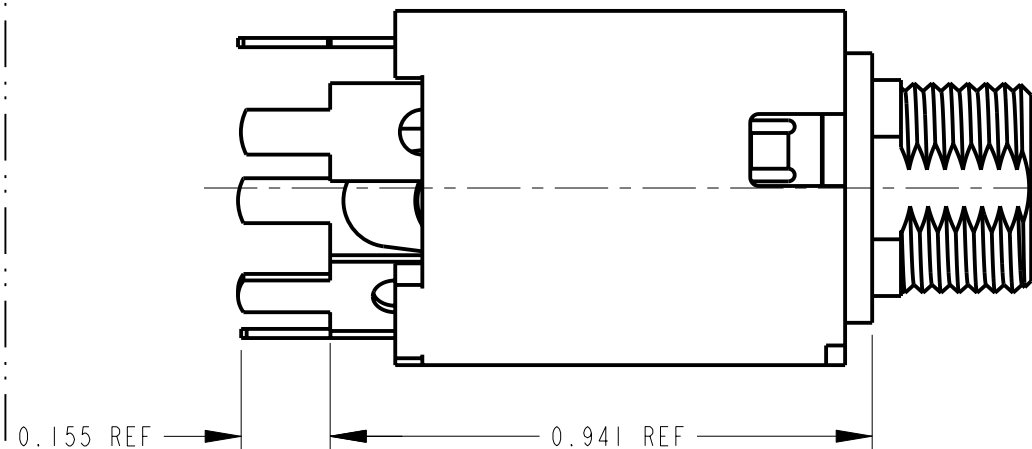
1. HARDWARE SHIPPED UNASSEMBLED.
2. MAXIMUM PANEL THICKNESS: 0.156
3. MATERIALS:
HOUSING - POLYESTER GLASS FILLED, BLACK
BUSHING - THERMOPLASTIC, BLACK WITH BRASS, NICKEL PLATED SLEEVE
SLEEVE TERMINAL - BRASS, LEAD FREE ELECTRO-TIN PLATED
SPRINGS - NICKEL SILVER, LEAD FREE ELECTRO-TIN PLATED
LIFTERS - NYLON (113 & 113E CIRCUIT OPTIONS)
WASHER - STEEL, NICKEL PLATED
NUT - BRASS, NICKEL PLATED
4. THIS PRODUCT IS RoHS COMPLIANT.

- N - MOLDED INSULATING NYLON BUSHING
- MN - "M" - GOLD PLATED SPRINGS WITH GOLD ALLOY CONTACTS ON RING SPRINGS AND SHUNT SPRINGS (WHEN SHUNTS ARE USED)
- "N" - MOLDED INSULATING NYLON BUSHING
- 11
- X RoHS COMPLIANT
- TERMINAL OPTIONS:
- BLANK - SOLDER TERMINAL
- PC - 0.078 WIDE PC TAILS
- PCS - SNAP-IN PC TAILS
- CIRCUITRY:

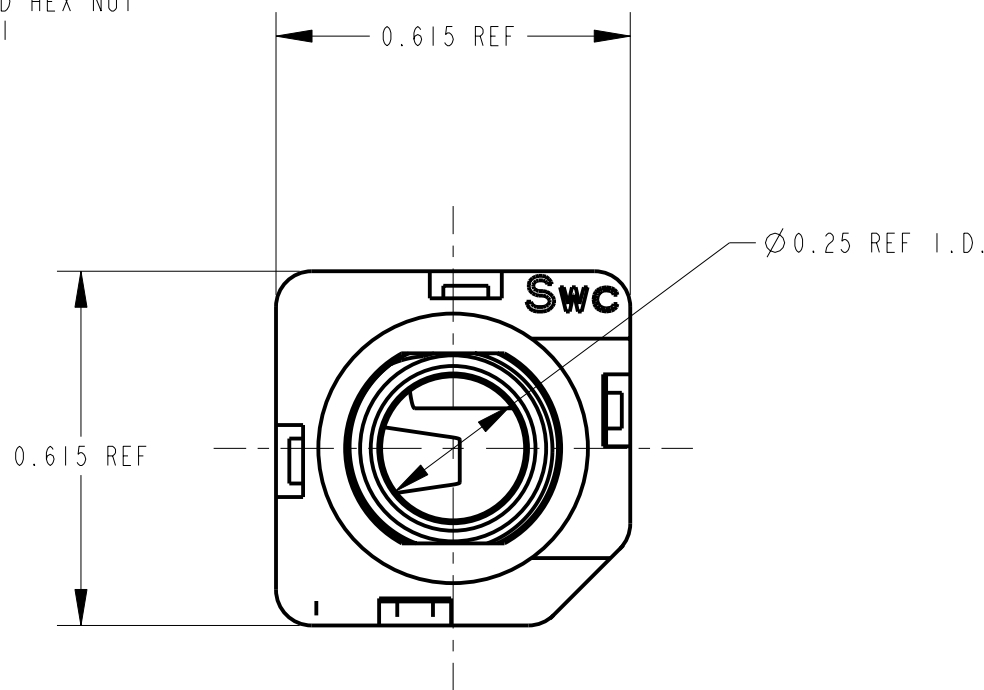
1 - TIP OPEN CIRCUIT	TIP SLEEVE
2A - TIP CLOSED CIRCUIT	TIP SLEEVE
2B - TIP & RING OPEN CIRCUIT	RING TIP SLEEVE
3 - TIP OPEN CIRCUIT AND ISOLATE "MAKE" CIRCUIT	TIP SLEEVE
3B - TIP CLOSED CIRCUIT AND RING OPEN CIRCUIT (I-C TRANSFER)	RING TIP SLEEVE
3D - 1 TIP CLOSED CIRCUIT AND 1 TIP OPEN CIRCUIT	TIP TIP SLEEVE
3E - TIP OPEN CIRCUIT AND ISOLATED "BREAK" CIRCUIT	TIP SLEEVE
3F - TIP OPEN CIRCUIT AND RING CLOSED CIRCUIT	RING TIP SLEEVE
4B - TIP & RING CLOSED CIRCUIT	RING TIP SLEEVE



SOLDER TERMINAL OPTION



PC TERMINAL OPTION
PCB LAYOUT - COMPONENT SIDE



CUSTOMER DRAWING

						★ STAR SYMBOL DENOTES CRITICAL DIMENSION		THIS DRAWING DESCRIBES A DESIGN CONSIDERED PROPRIETARY IN NATURE, DEVELOPED AND MANUFACTURED BY SWITCHCRAFT INC. AND IS RELEASED ON A CONFIDENTIAL BASIS FOR IDENTIFICATION PURPOSES ONLY.									
						UNLESS OTHERWISE SPECIFIED		SIZE		WIDTH		MULT		LBS/M		TEMPER	
						1. ALL DIMENSIONS IN INCHES - TWO PLACE DECIMALS ±0.01 - THREE PLACE DECIMALS ±0.005 - ANGLES ±1° - ALL DIA. CONCENTRIC WITHIN 0.005 T.I.R.		FINISH SPEC No.				MATERIAL SPEC No.					
						2. FEATURES ON THE SAME CENTERLINE MUST BE ALIGNED WITHIN ±0.002		FIRST USED ON			SCALE 3:1			<div>Switchcraft®</div>			
						3. REMOVE ALL BURRS		DATE DRAWN		BY	CHKD		APVD				
A	26032	3-25-11	TJK	TJK				02-Apr-07		TJK	4-2-07		TJK		4-2-07		
REV	ECO NUMBER	DATE	BY	APVD					NAME		#3/8-32 INSULATED BUSHING Ø0.25 I.D. HI-D JACK ASS'Y, RoHS		PART No.		N110X SERIES MN110X SERIES		
REVISIONS							DO NOT SCALE DRAWING								REV A		

Mouser Electronics

Authorized Distributor

Click to View Pricing, Inventory, Delivery & Lifecycle Information:

Switchcraft:

[MN112AX](#) [MN112BX](#) [MN114BX](#)