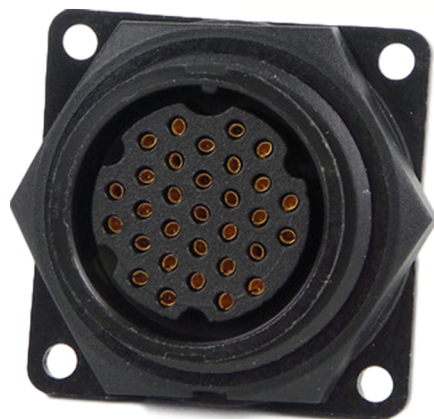
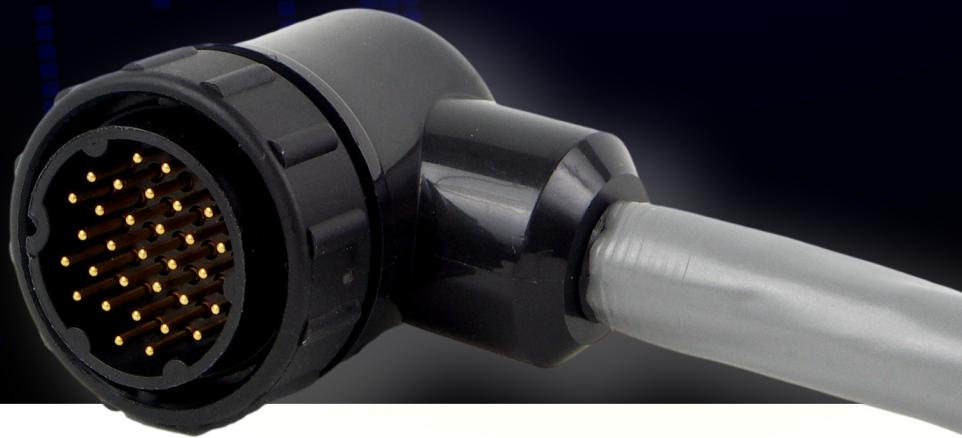


MEGA-CON-X[®]
SEALED CONNECTORS
AND CABLES



Switchcraft[®]
CONXALL[®]

HARSH ENVIRONMENT CONNECTIVITY SOLUTIONS

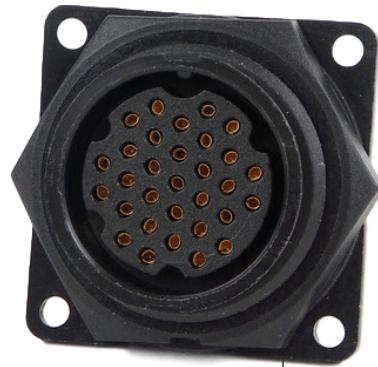
Mega-Con-X® Sealed Connectors

Thousands of configurations are available up to 31 contacts with a variety of options

Coupling rings have overriding locking features to prevent loosening or separation of connector



Available as field installable connectors or factory molded cable assemblies



Available with solder, crimp, PC mount, and right angle PC mount style contacts

CONXALL® PRODUCT

The Mega Con X® series from Conxall® sets the standard for sealed circular connectors. It is built to withstand harsh environments with an IP67 seal rating, and a 600V voltage rating makes it an ideal solution for power or signal. Thousands of configurations are available up to 31 contacts, including custom molded cable assemblies

IP67
**RATED WATER
RESISTANCE**

The Con-X® series is sealed to IP67 for harsh environments when used with a molded cable assembly.



**600V VOLTAGE
RATING**

600V voltage rating makes it an ideal solution for power or signal.



**CONXALL
QUALITY**

Made in USA to the high standards that have made Conxall® the leading name in harsh environment connectors.

MEGA-CON-X® LINE



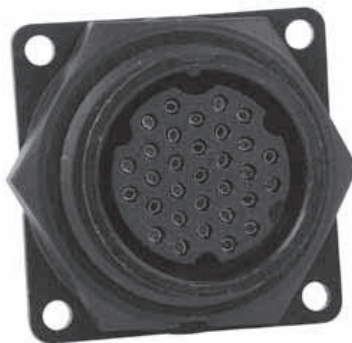
CABLE END - SOCKET
MATES WITH PANEL MOUNT



CABLE END - PIN
MATES WITH PANEL MOUNT



PANEL MOUNT - PIN
MATES WITH CABLE END



PANEL MOUNT - SOCKET
MATES WITH CABLE END



DUST CAP
P/N - 24295

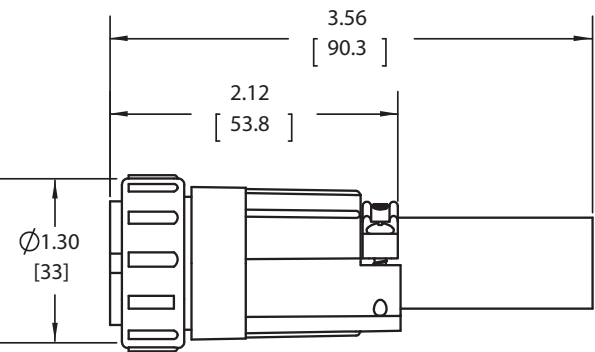


MOLDED CABLE END ASSEMBLY

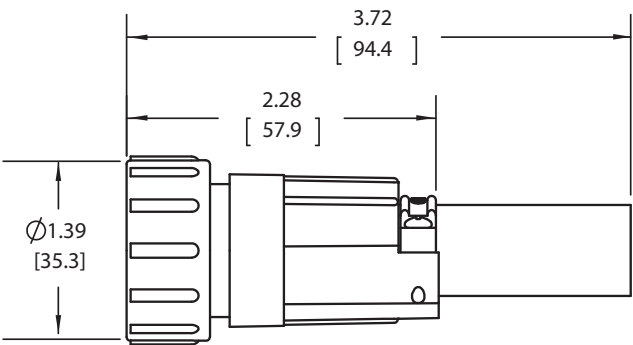


MOLDED RIGHT ANGLE CABLE ASSEMBLY

FIELD INSTALLABLE KITS

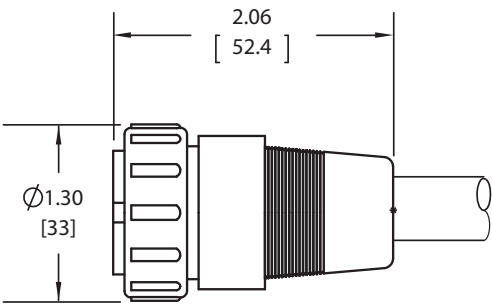


232XX-31XG-3XX
FIELD INSTALLABLE QUICK CONNECT TYPE
CABLE CONNECTOR - BACKSHELL TYPE 3

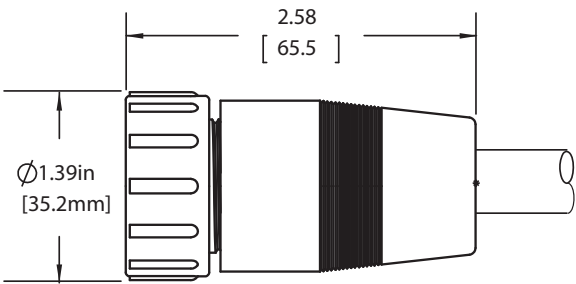


232XX-31XG-T3XX
FIELD INSTALLABLE THREADED TYPE
CABLE CONNECTOR - BACKSHELL TYPE 3

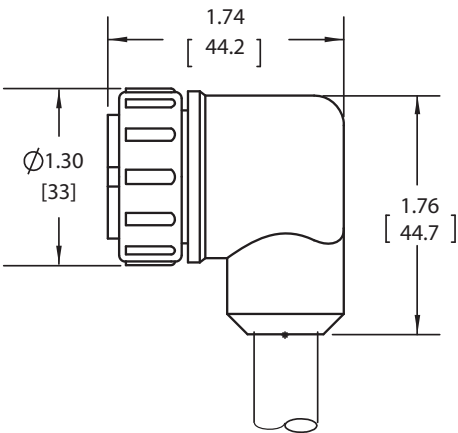
CUSTOM MOLDED CABLE ASSEMBLIES



232XX-31XG
CUSTOM CABLE CONNECTOR STRAIGHT OVERMOLDED
QUICK CONNECT TYPE

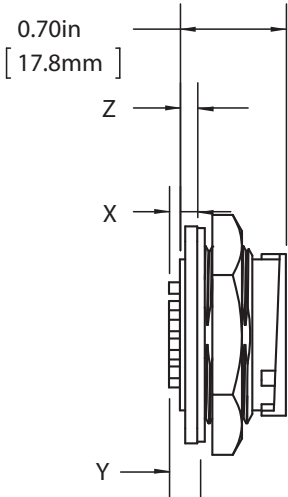


232XX-31XG
CUSTOM CABLE CONNECTOR STRAIGHT OVERMOLDED
THREADED CONNECT TYPE

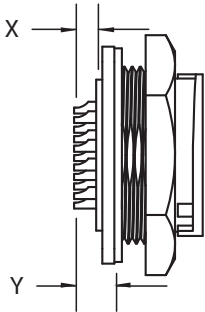


232XX-31XG
CUSTOM CABLE CONNECTOR RIGHT ANGLE OVERMOLDED
QUICK CONNECT TYPE

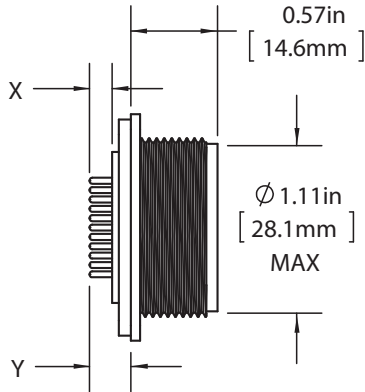
PANEL MOUNT ASSEMBLY KITS



24280-31XG-3XX
PANEL MOUNT CONNECTOR
CRIMP

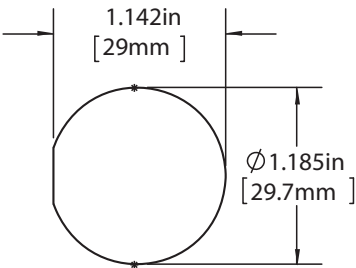
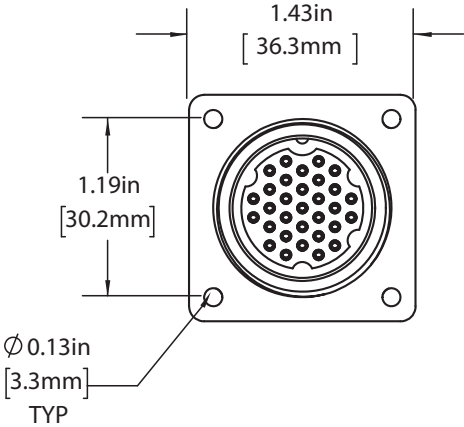
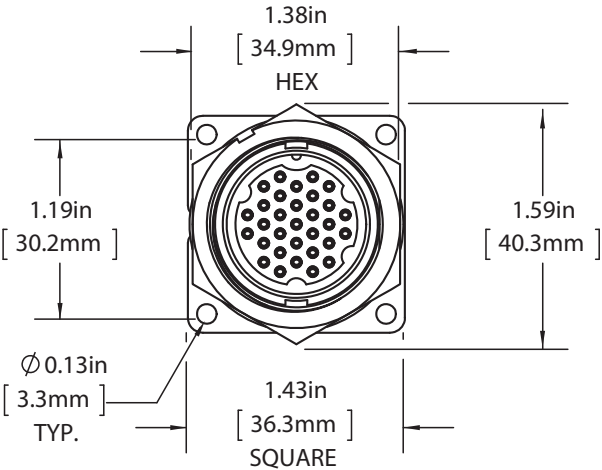


24282-31XG-3XX
PANEL MOUNT CONNECTOR
SOLDER CUP

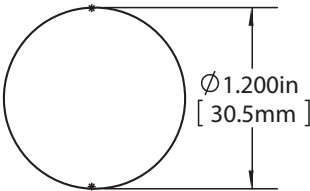


242XX-31XG-3XX
PANEL MOUNT CONNECTOR
PC TAIL

*X, Y, Z - CONSULT FACTORY

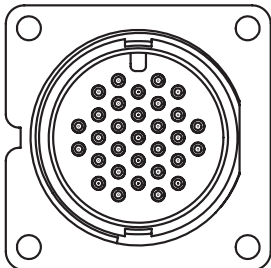


RECOMMENDED
PANEL CUT-OUT
QUICK CONNECT TYPE
TOLERANCE: ±0.003 [0.08mm]

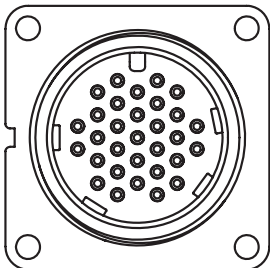


RECOMMENDED
PANEL CUT-OUT
THREADED TYPE
TOLERANCE: ±0.003 [0.08mm]

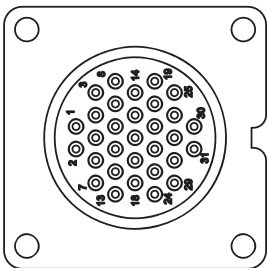
PANEL MOUNT / CABLE TO CABLE CONNECTORS
Front View | Wire View



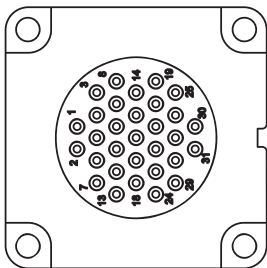
QUICK CONNECT TYPE
SINGLE KEY
31-POSITION
#20 PIN CONTACT



THREADED TYPE
5 KEY
31-POSITION
#20 PIN CONTACT

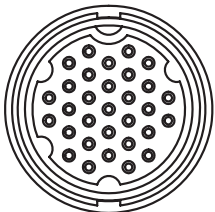


QUICK CONNECT TYPE
SINGLE KEY
31-POSITION
#20 PIN CONTACT

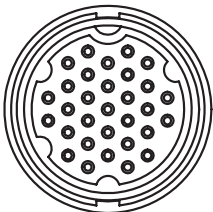


THREADED TYPE
5 KEY
31-POSITION
#20 PIN CONTACT

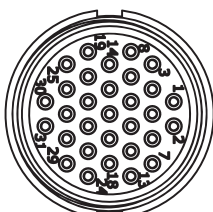
CABLE CONNECTORS
Front View | Wire View



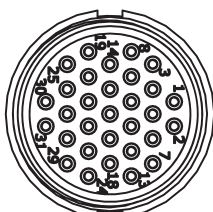
QUICK CONNECT TYPE
5 KEY
31-POSITION
#20 PIN CONTACT



THREADED TYPE
5 KEY
31-POSITION
#20 PIN CONTACT



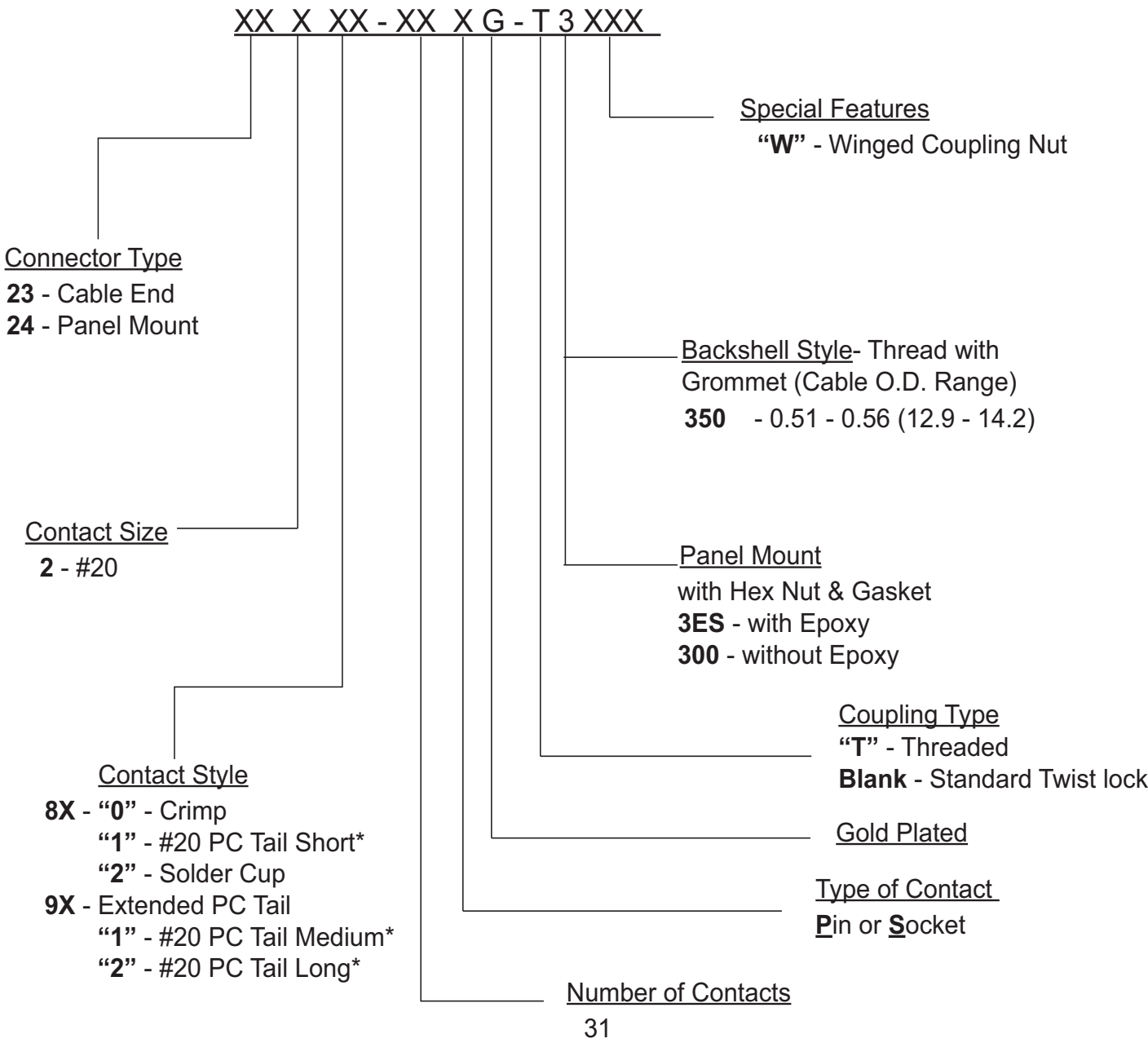
QUICK CONNECT TYPE
5 KEY
31-POSITION
#20 PIN CONTACT



THREADED TYPE
5 KEY
31-POSITION
#20 PIN CONTACT

All dimensions are for reference only. Units shown: in[mm].

PART NUMBER TO ORDER



*Consult factor of length and diameter of PC Tail. Additionally, alternative colors and materials are available

COLOR CODED CON-X® LINE



CC2

CH2



CC3

CH3



CC5

CH5



CC7

CH7

ORDERING CODE

Added to the end of your standard Con-X part number

When ordering, use the following code to specify your special feature:

Special Features

CXX= Color Options

└─ Color Designator - see below

└─ Part Designator - see below

└─ Special Feature Designator - see below

Special Feature Designator = C (Color Option)

Part Designator = H (Hex Nut)

C (Coupling Ring-standard)*

Color Designator= 2 (Red)

3 (Blue)

5 (Yellow)

7 (Green)

*Winged coupling ring available on request.
Contact factory for more information.

SPECIFICATIONS

MECHANICAL:

Life:	300 insertion / withdrawal cycles minimum
Vibration:	Coupling rings have overriding locking feature to prevent loosening or separation of connector
Hex Nut Torque:	10 in-lb max tightening torque.
Coupling Style:	Bayonet with ribbed coupling nut (winged coupling nut available)
Backshell Style:	Threaded
Conductor Sizes:	#20 contacts accepts 20 through 24 AWG

ELECTRICAL

Voltage Rating:	600V
Current Rating:	2.3A Max

ENVIRONMENTAL

Operating Temperature:	-40 °C to +85 °C (-40 °F to +195 °F)
Salt Atmosphere (Corrosion):	300 Hr salt spray when mated
Weathertight:	IP67 when mated

MATERIAL

Backshell:	Thermoplastic, UL 94HB, Black
Contacts:	Copper Alloy, Gold over Nickel Plate
Coupling Ring:	Thermoplastic, UL 94HB, Black
Gasket:	Elastomer, Black
Grommet/Strain Relief	Elastomer, Black
Hex Nut:	Thermoplastic, UL 94HB, Black
O-Ring:	Elastomer, Black
Shell:	Thermoplastic, UL 94HB, Black
Optional Dust Cap:	Elastomer, Black

MOLDED CABLE ASSEMBLIES

Weathertight:	NEMA 60; 13: IEC 1P67
---------------	-----------------------

Mouser Electronics

Authorized Distributor

Click to View Pricing, Inventory, Delivery & Lifecycle Information:

Switchcraft:

[23280-31PG-3XX](#) [23280-31SG-3XX](#) [23282-31PG-350](#) [23282-31PG-3XX](#) [23282-31SG-350](#) [23282-31SG-3XX](#)
[24280-31PG-300](#) [24280-31SG-300](#) [24282-31PG-300](#) [24282-31SG-300](#) [24295](#)