

PART NUMBER	BUTTON COLOR
EP903	RED
EP913	BLACK

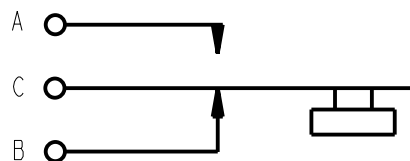
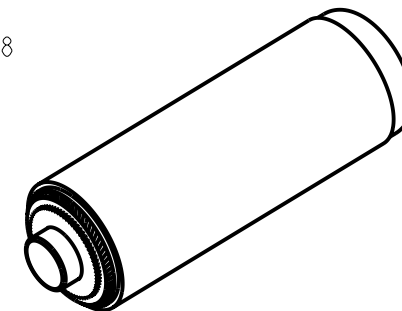
NOTES:

- MATERIALS:
PUSHBUTTON - THERMOPLASTIC, SEE TABLE FOR COLOR
SWITCH HOUSING & ADAPTER - COPPER ALLOY, NICKEL PLATED
SWITCH TERMINALS - COPPER ALLOY, SILVER PLATED
SWITCH SPRING - STAINLESS STEEL
SWITCH INSULATORS - PHENOLIC
HANDLE - THERMOPLASTIC, BLACK

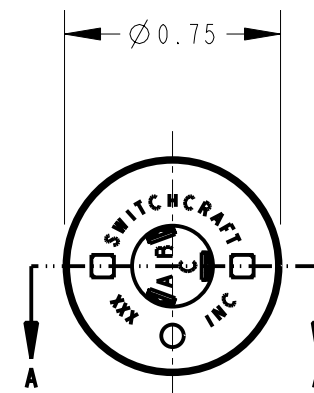
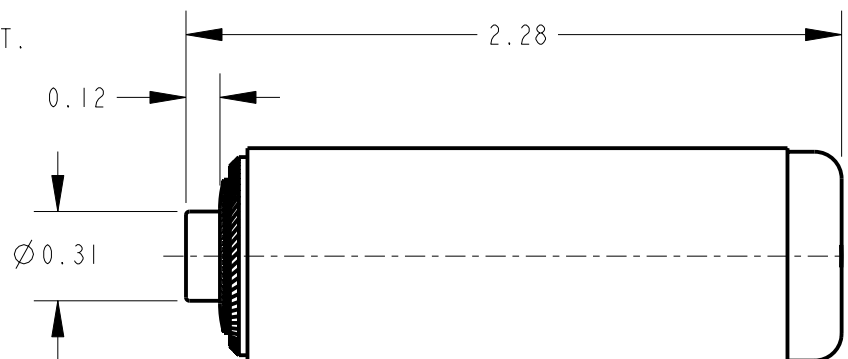
- THESE PRODUCTS ARE RoHS COMPLIANT.

BUTTON COLOR
SEE TABLE

SECTION A-A



SCHEMATIC



CUSTOMER DRAWING

★ STAR SYMBOL DENOTES CRITICAL DIMENSION

UNLESS OTHERWISE SPECIFIED

- ALL DIMENSIONS IN INCHES
-TWO PLACE DECIMALS ± 0.01
-THREE PLACE DECIMALS ± 0.005
-ANGLES $\pm 1^\circ$
-ALL DIA. CONCENTRIC WITHIN 0.005 T.I.R.

- FEATURES ON THE SAME CENTERLINE
MUST BE ALIGNED WITHIN ± 0.002

- REMOVE ALL BURRS

DO NOT SCALE DRAWING

THIS DRAWING DESCRIBES A DESIGN CONSIDERED PROPRIETARY IN NATURE, DEVELOPED AND MANUFACTURED BY SWITCHCRAFT INC. AND IS RELEASED ON A CONFIDENTIAL BASIS FOR IDENTIFICATION PURPOSES ONLY.

SIZE	WIDTH	MULT	LBS/M	TEMPER
------	-------	------	-------	--------

FINISH	MATERIAL
SPEC No.	SPEC No.

FIRST USED ON	SCALE
	3:2

DATE DRAWN	BY	CHKD	APVD
18-Mar-13	TO	TO	TJK
		3-18-13	3-19-13

Switchcraft®

REV	ECO NUMBER	DATE	BY	APVD
E	21131	3-18-13	TO	TJK
REVISIONS				

PART No.	REV
EP903_EP913	E

Pro/Engineer CAD File

A

Mouser Electronics

Authorized Distributor

Click to View Pricing, Inventory, Delivery & Lifecycle Information:

Switchcraft:

[EP903](#) [EP913](#)