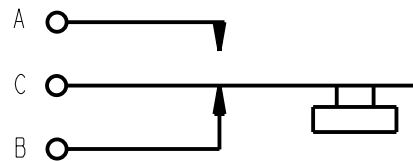


PART NUMBER	BUTTON COLOR
ED903	RED
ED913	BLACK

NOTES:

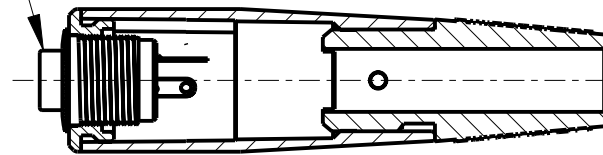
- MATERIALS:
PUSHBUTTON - THERMOPLASTIC, SEE TABLE FOR COLOR
SWITCH HOUSING & ADAPTER - BRASS, NICKEL PLATED
SWITCH TERMINALS - BRASS, SILVER PLATED
SWITCH SPRING - STAINLESS STEEL
SWITCH INSULATORS - PHENOLIC
HANDLE - ZINC ALLOY, NICKEL PLATED
FLEX RELIEF - THERMOPLASTIC RUBBER, BLACK
CLAMP PLATES - STAINLESS STEEL
FLEX RELIEF SCREWS - STEEL, NICKEL PLATED

- THESE PRODUCTS ARE RoHS COMPLIANT.

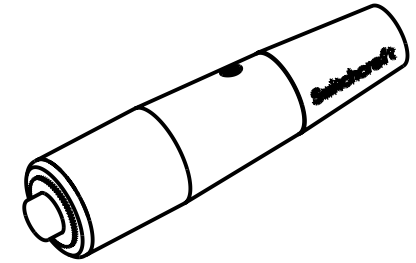


SCHEMATIC

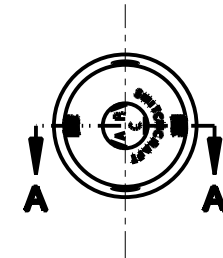
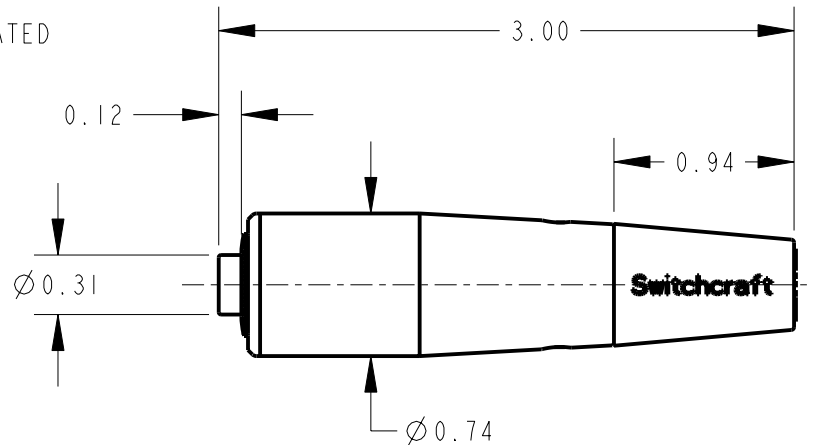
BUTTON COLOR
SEE TABLE



SECTION A-A



Ø 0.23
ACCEPTS CABLE
UP TO Ø 0.30



CUSTOMER DRAWING



STAR SYMBOL DENOTES CRITICAL DIMENSION

THIS DRAWING DESCRIBES A DESIGN CONSIDERED PROPRIETARY IN NATURE, DEVELOPED AND MANUFACTURED BY SWITCHCRAFT INC. AND IS RELEASED ON A CONFIDENTIAL BASIS FOR IDENTIFICATION PURPOSES ONLY.

UNLESS OTHERWISE SPECIFIED

- ALL DIMENSIONS IN INCHES
- TWO PLACE DECIMALS ± 0.01
- THREE PLACE DECIMALS ± 0.005
- ANGLES $\pm 1^\circ$
- ALL DIA. CONCENTRIC WITHIN 0.005 T.I.R.

- FEATURES ON THE SAME CENTERLINE MUST BE ALIGNED WITHIN ± 0.002

- REMOVE ALL BURRS

SIZE	WIDTH	MULT	LBS/M	TEMPER
FINISH			MATERIAL	
SPEC No.			SPEC No.	
FIRST USED ON			SCALE	
			1:1	
DATE DRAWN	BY	CHKD	APVD	
11-May-10	WR	JS 11-28-78	RV 11-28-78	
NAME				PART No.
CORD SWITCH, RoHS				ED903 & ED913
				REV
				G

REV	ECO NUMBER	DATE	BY	APVD
G	21131	8-21-96	TJK	TJK
REVISIONS				

DO NOT SCALE DRAWING

Pro/Engineer CAD File

A

Mouser Electronics

Authorized Distributor

Click to View Pricing, Inventory, Delivery & Lifecycle Information:

Switchcraft:

ED903 ED913