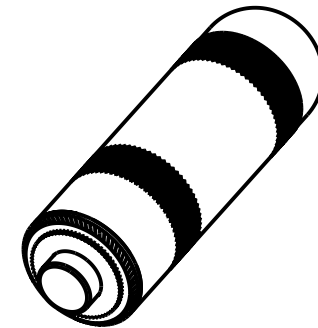
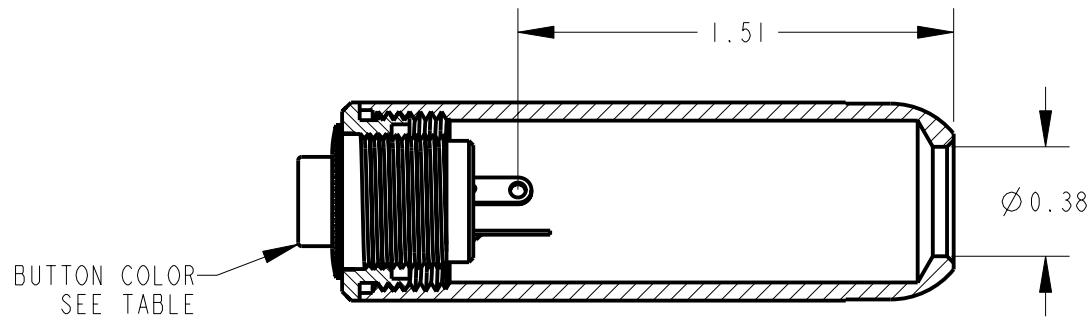


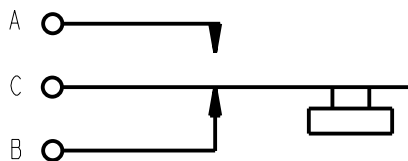
PART NUMBER	BUTTON COLOR
E903	RED
E913	BLACK



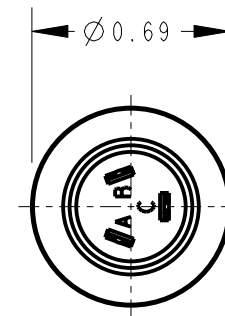
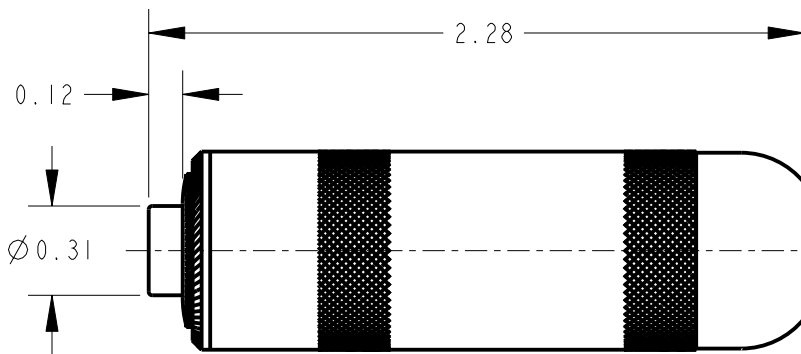
NOTES:

1. MATERIALS:
PUSHBUTTON - THERMOPLASTIC, SEE TABLE FOR COLOR
SWITCH HOUSING & ADAPTER - COPPER ALLOY, NICKEL PLATED
SWITCH TERMINALS - COPPER ALLOY, SILVER PLATED
SWITCH SPRING - STAINLESS STEEL
SWITCH INSULATORS - PHENOLIC
HANDLE - COPPER ALLOY, NICKEL PLATED

2. THESE PRODUCTS ARE RoHS COMPLIANT.



SCHEMATIC



CUSTOMER DRAWING

					<div>★ STAR SYMBOL DENOTES CRITICAL DIMENSION</div>	THIS DRAWING DESCRIBES A DESIGN CONSIDERED PROPRIETARY IN NATURE, DEVELOPED AND MANUFACTURED BY SWITCHCRAFT INC. AND IS RELEASED ON A CONFIDENTIAL BASIS FOR IDENTIFICATION PURPOSES ONLY.						
					<div>UNLESS OTHERWISE SPECIFIED</div> <div>1. ALL DIMENSIONS IN INCHES -TWO PLACE DECIMALS ±0.01 -THREE PLACE DECIMALS ±0.005 -ANGLES ± -ALL DIA. CONCENTRIC WITHIN 0.005 T.I.R.</div> <div>2. FEATURES ON THE SAME CENTERLINE MUST BE ALIGNED WITHIN ±0.002</div> <div>3. REMOVE ALL BURRS</div>	SIZE	WIDTH	MULT	LBS/M	TEMPER		
						FINISH			MATERIAL			
						SPEC No.			SPEC No.			
						FIRST USED ON			SCALE 3:2			
						DATE DRAWN	BY	CHKD	APVD	<div>Switchcraft®</div>		
E	21131	3-18-13	TO	TJK	18-Mar-13	TO	3-18-13	TJK 3-19-13				
REV	ECO NUMBER	DATE	BY	APVD	NAME				PART No.		REV	
REVISIONS					DO NOT SCALE DRAWING	CORD SWITCH, RoHS				E903_E913		E

REVISIONS

DO NOT SCALE DRAWING

CORD SWITCH, RoHS

E903_E913

REV
E

Mouser Electronics

Authorized Distributor

Click to View Pricing, Inventory, Delivery & Lifecycle Information:

[Switchcraft:](#)

[E903](#) [E913](#)