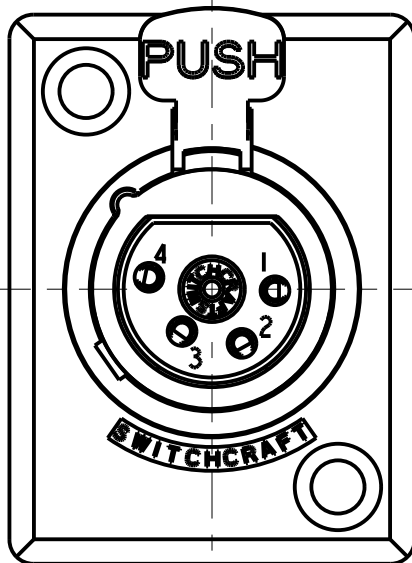
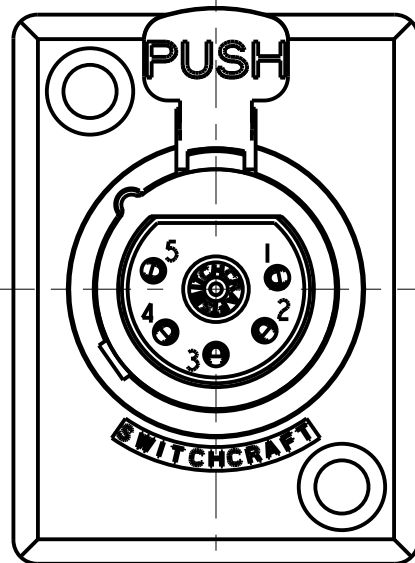


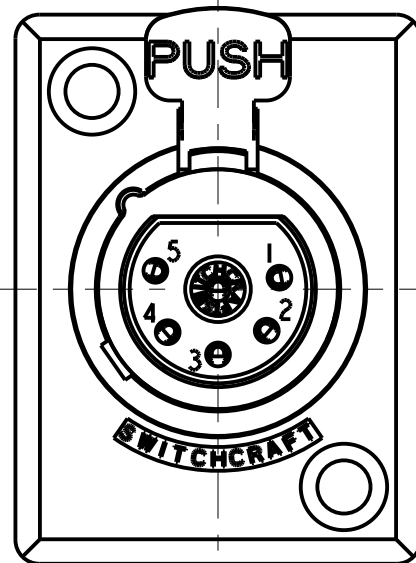
3 PIN



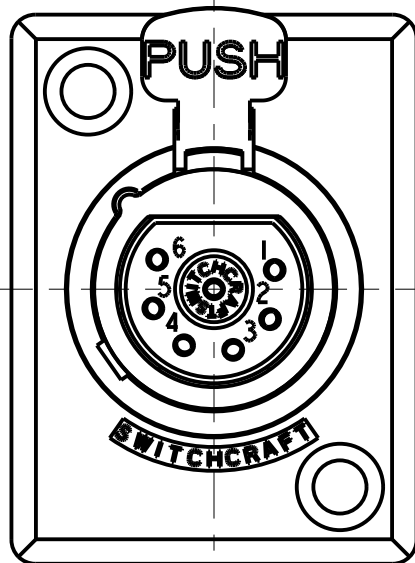
4 PIN



5 PIN



6 PIN



7 PIN

STANDARD SERIES

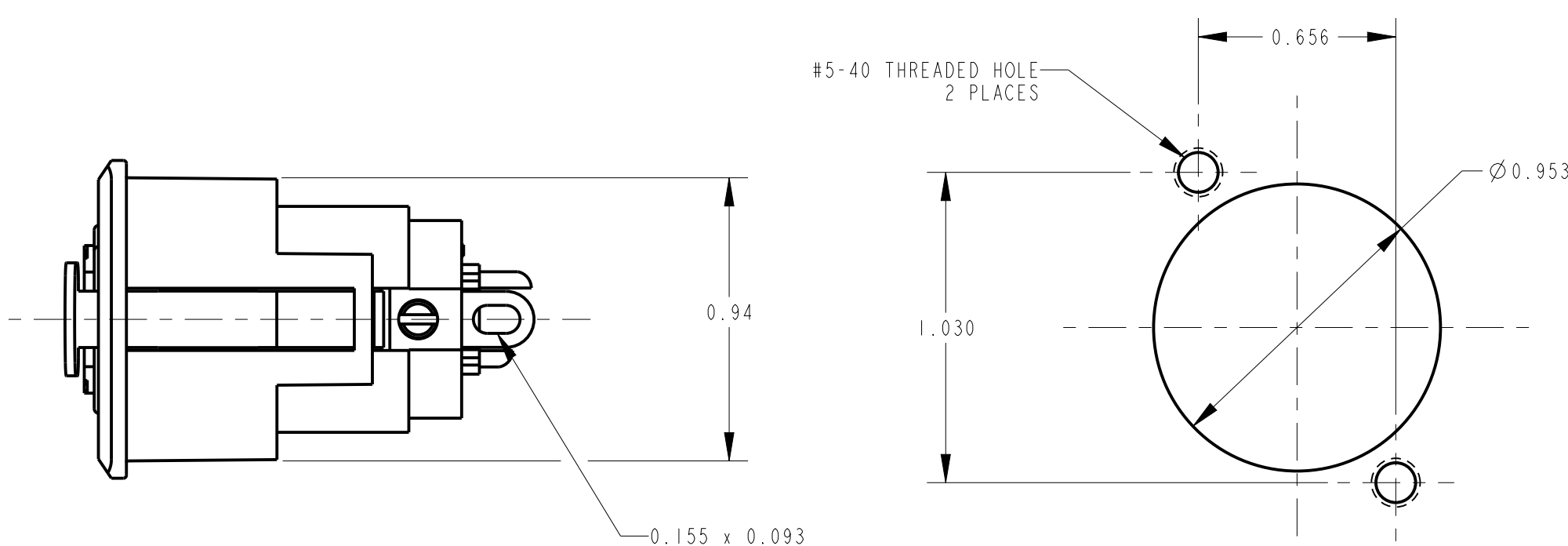
SCREW - STAINLESS STEEL
SHELL - STAINLESS STEEL
LATCH BUTTON - ZINC, NICKEL PLATED
INSULATOR - POLYESTER, GREEN
SOLDER TERMINAL - BRASS, ELECTRO TIN
LATCH SPRING - STAINLESS STEEL
CONTACT PIN - PHOSPHOR BRONZE, SILVER PLATED
HOUSING - ZINC
RELEASE LEVER - STEEL, NICKEL PLATED

- CONTACT PLATING:
BLANK = SILVER (STANDARD)
AU = GOLD
- HOUSING FINISH:
BLANK = TEXTURED (STANDARD)
S = SANDED
- HOUSING PLATING: SEE NOTE 2
BLANK = NICKEL PLATE HOUSING
WITH GREEN INSULATOR (STANDARD)
BX = BLACK HOUSING WITH BLACK INSULATOR, RoHS
- LATCH TYPE:
BLANK = STANDARD LATCHLOCK
D = FAS-DIS-CONNECT DETENT (SEE FIGURE 1)
(NO LATCH)
- NO. OF CONTACTS:
3 = 3 CONTACTS
4 = 4 CONTACTS
5 = 5 CONTACTS
6 = 6 CONTACTS
7 = 7 CONTACTS

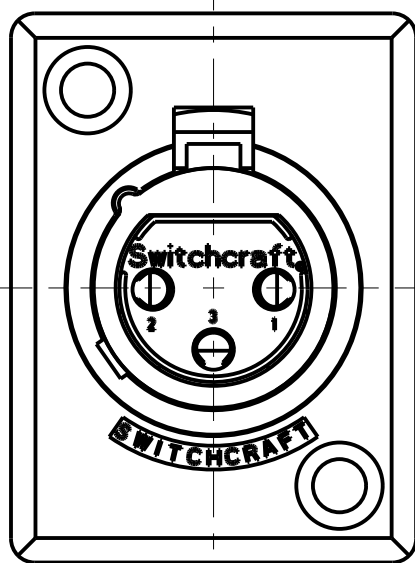
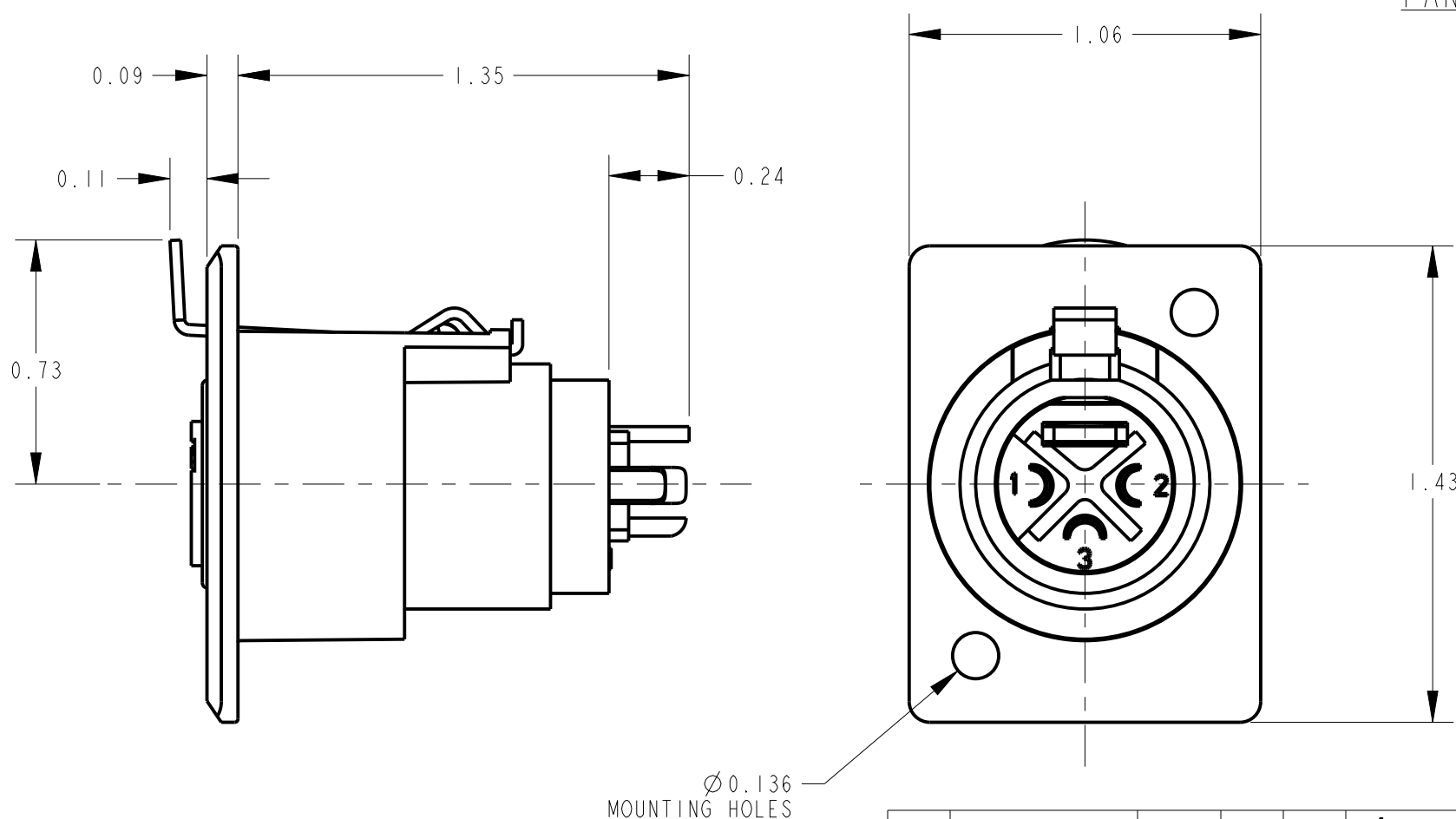
PROFESSIONAL SERIES

HOUSING FINISH - MATTE CHROME
CONTACT PLATING - GOLD

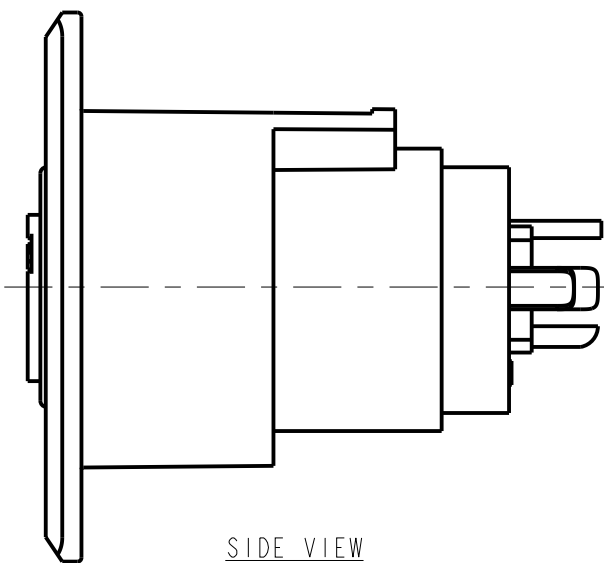
- OGP 62
- NO. OF CONTACTS:
3 = 3 CONTACTS



RECOMMENDED
PANEL CUT-OUT



FRONT VIEW



SIDE VIEW

FIGURE 1

3 PIN DETENT VERSION
(NO LATCH)

CUSTOMER DRAWING

NOTES:

1. ALL DIMENSIONS REF. UNLESS OTHERWISE SPECIFIED.
2. BLACK HOUSING AND INSERT WITH SATIN NICKEL PLATED LATCH.
3. THIS PRODUCT IS RoHS COMPLIANT.

REV	ECO NUMBER	DATE	BY	APVD
T	28682	05-29-24	PC	TJK
S	26158	10-4-06	TO	TJK
R	ECO #22895	9-20-99	TJK	TJK

REV	ECO NUMBER	DATE	BY	APVD
T	28682	05-29-24	PC	TJK
S	26158	10-4-06	TO	TJK
R	ECO #22895	9-20-99	TJK	TJK

THIS DRAWING DESCRIBES A DESIGN CONSIDERED PROPRIETARY IN NATURE, DEVELOPED AND MANUFACTURED BY SWITCHCRAFT INC. AND IS RELEASED ON A CONFIDENTIAL BASIS FOR IDENTIFICATION PURPOSES ONLY.				
SIZE	WIDTH	MULT	LBS/M	TEMPER
FINISH		MATERIAL		
SPEC No.		SPEC No.		
FIRST USED ON		SCALE		
DATE DRAWN		BY	CHKD	APVD
7-Feb-94		SG	AA	GHJ
NAME		D SERIES FEMALE OG, RoHS		
PART No.		REV		
D_F SERIES		T		

Mouser Electronics

Authorized Distributor

Click to View Pricing, Inventory, Delivery & Lifecycle Information:

[Switchcraft:](#)

[D7F](#) [D3F](#) [D6F](#) [D5F](#) [D4F](#) [D3FBXAU](#) [D3FBX](#) [D4FBX](#) [D4FBXAU](#) [D5FBX](#) [D5FBXAU](#) [D6FBXAU](#) [D7FBX](#) [D6FBX](#)
[D3FD](#) [D3FPKG](#) [D3FDB](#) [D6FDB](#)