

8

7

6

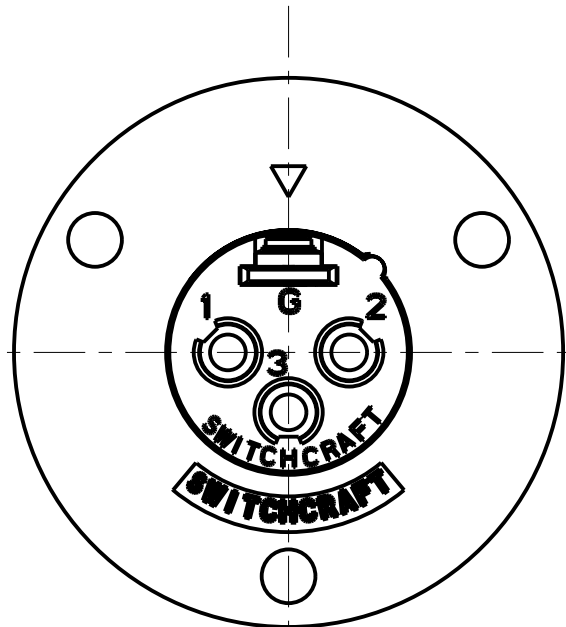
5

4

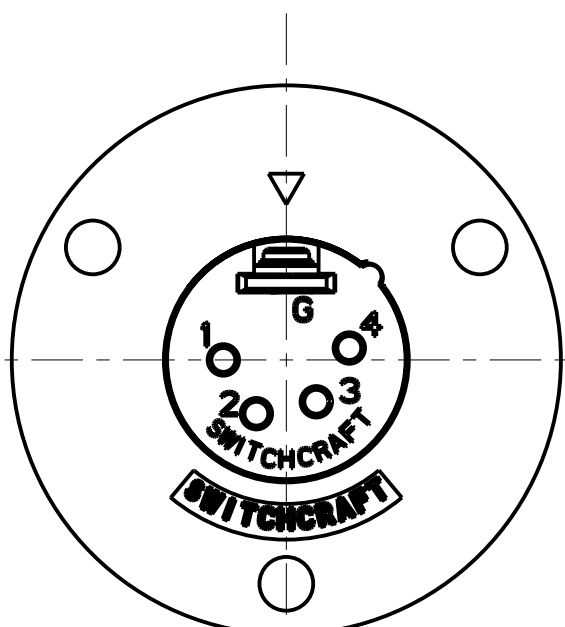
3

2

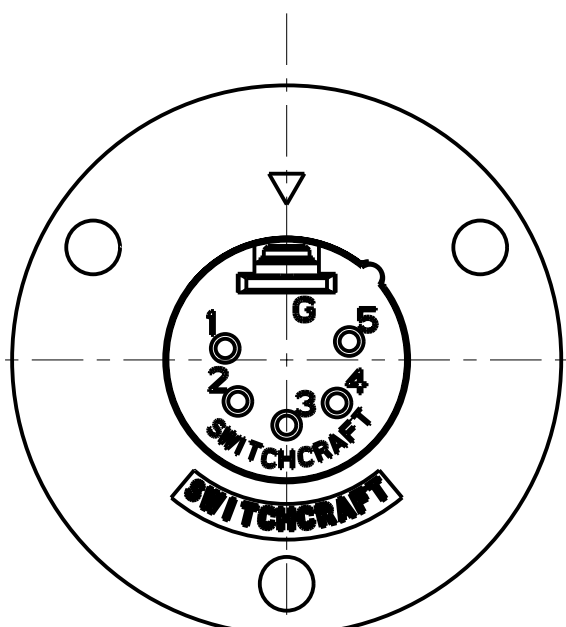
1



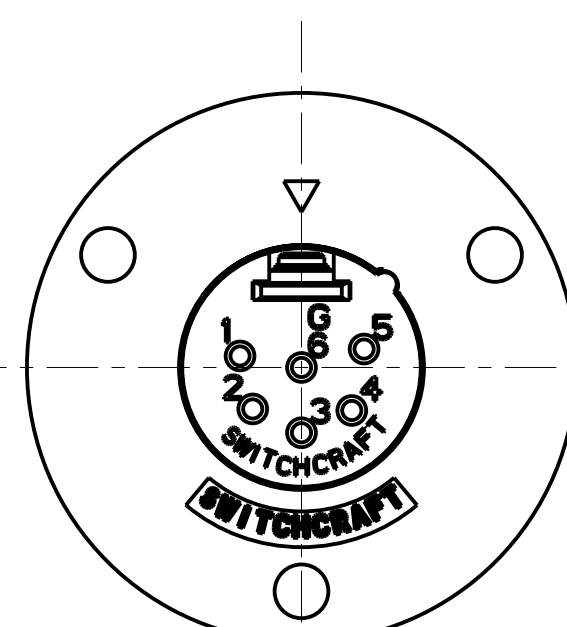
3 PIN



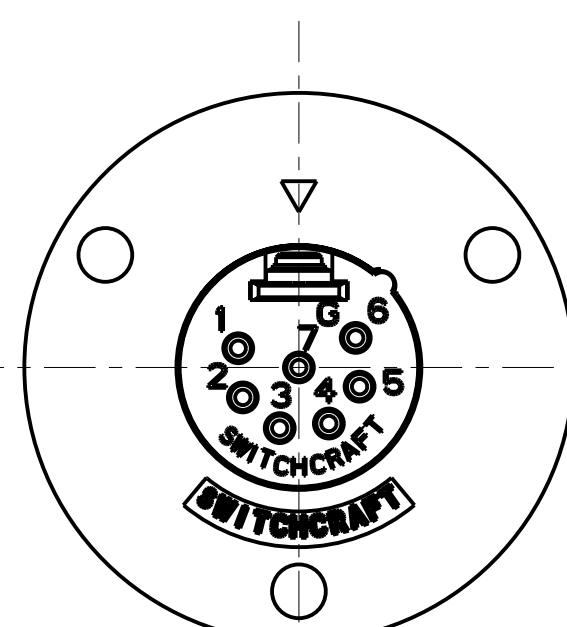
4 PIN



5 PIN



6 PIN



7 PIN

STANDARD SERIES

SCREW - STAINLESS STEEL  
HOUSING - ZINK, NICKEL PLATED  
SOLDER TERMINAL- BRASS, ELECTROTIN PLATED  
INSULATOR - POLYESTER, GREEN (UL94V-0)  
CONTACT PIN - BRASS, SILVER PLATED

C - M

CONTACT PLATING  
BLANK = SILVER (STANDARD)  
AU = GOLD

HOUSING FINISH  
BLANK = NICKEL PLATE (STANDARD)  
B = BLACK

NO. OF CONTACTS:  
3 = 3 CONTACTS  
4 = 4 CONTACTS  
5 = 5 CONTACTS  
6 = 6 CONTACTS  
7 = 7 CONTACTS

PROFESSIONAL SERIES

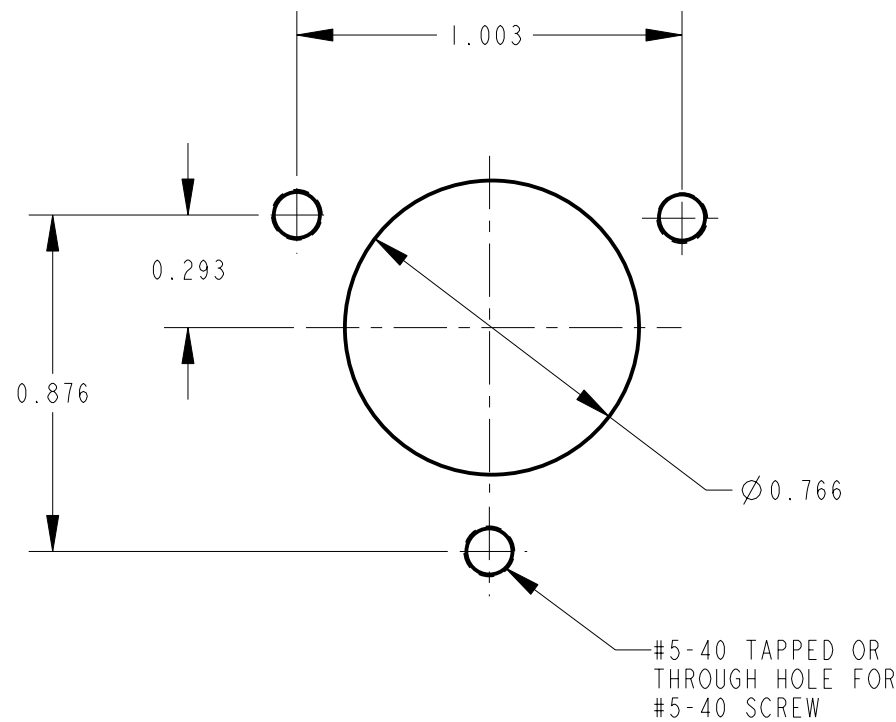
SAME AS ABOVE EXCEPT  
CONTACT PIN - PHOSPHOR BRONZE, GOLD OVER NICKEL

QGP - 27

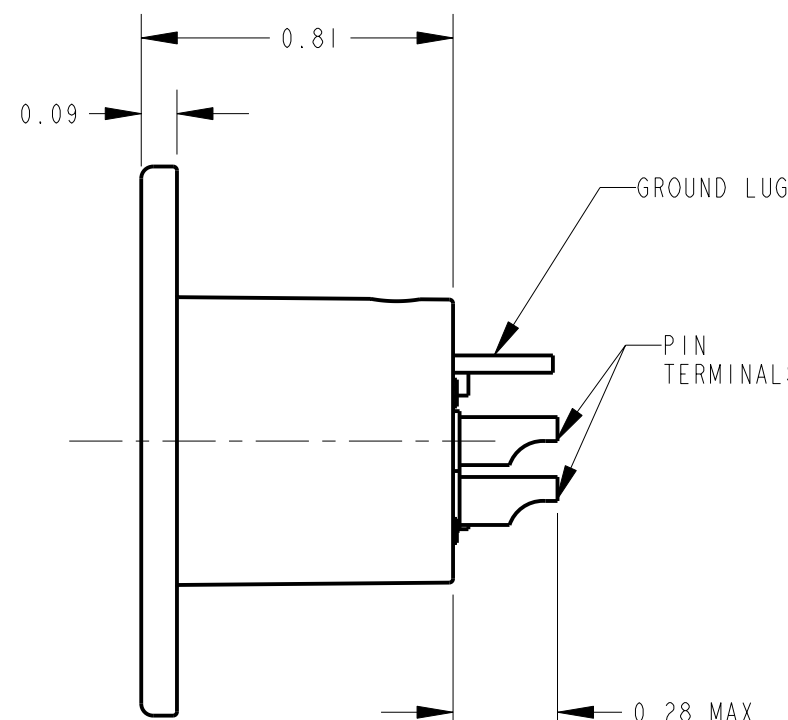
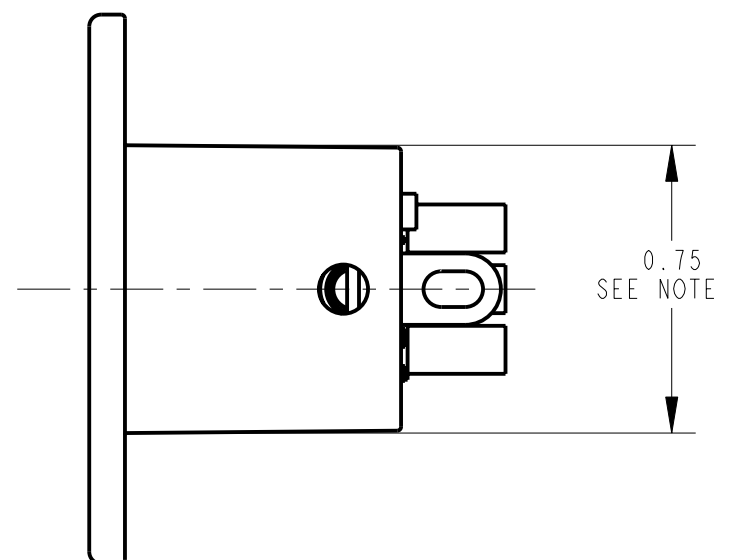
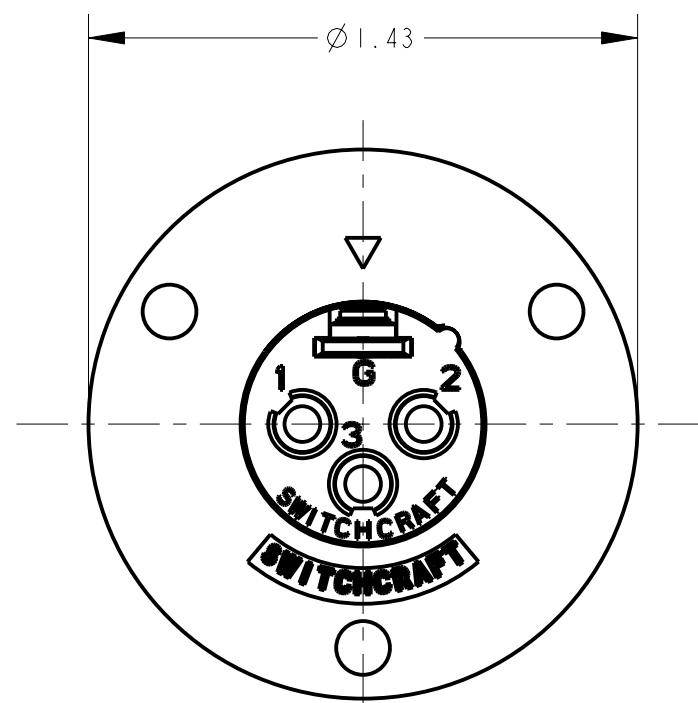
NO. OF CONTACTS:  
3 = 3 CONTACTS  
4 = 4 CONTACTS  
5 = 5 CONTACTS  
6 = 6 CONTACTS  
7 = 7 CONTACTS

NOTE:

1. ALL DIMENSIONS ARE REFERENCE, UNLESS OTHERWISE SPECIFIED.



RECOMMENDED  
PANEL CUT-OUT



CUSTOMER DRAWING

G	21136	2-3-97	MM	RB	<div>★ STAR SYMBOL DENOTES CRITICAL DIMENSION</div> <div>UNLESS OTHERWISE SPECIFIED</div> <div>1. ALL DIMENSIONS IN INCHES - TWO PLACE DECIMALS ±0.01 - THREE PLACE DECIMALS ±0.005 - ANGLES ±1° - ALL DIA. CONCENTRIC WITHIN 0.005 T.I.R.</div> <div>2. FEATURES ON THE SAME CENTERLINE MUST BE ALIGNED WITHIN ±0.002</div> <div>3. REMOVE ALL BURRS</div> <div>DO NOT SCALE DRAWING</div>	THIS DRAWING DESCRIBES A DESIGN CONSIDERED PROPRIETARY IN NATURE, DEVELOPED AND MANUFACTURED BY SWITCHCRAFT INC. AND IS RELEASED ON A CONFIDENTIAL BASIS FOR IDENTIFICATION PURPOSES ONLY.							
F	21070	2-3-97	MM	RB		SIZE	WIDTH		MULT	LBS/M	TEMPER		
E	21035	2-3-97	MM	RB		FINISH	MATERIAL						
D	20627	1-20-96	SG	SG		SPEC No.					SPEC No.		
C	20534	12-9-95	SG	RB		FIRST USED ON		SCALE		<div>Switchcraft®</div> <div>SHEET   OF  </div>			
						DATE DRAWN	BY	CHKD	APVD				
H	22838	9-30-99	JL	DG		8-10-94	SG	SG 8-10-94	GHJ 8-10-94				
REV	ECO NUMBER	DATE	BY	APVD		NAME		PART No.				REV	
REVISIONS						C SERIES MALE QG		C_M SERIES					H

# Mouser Electronics

Authorized Distributor

Click to View Pricing, Inventory, Delivery & Lifecycle Information:

Switchcraft:

[C5M](#) [C4M](#) [C3M](#) [C6M](#)