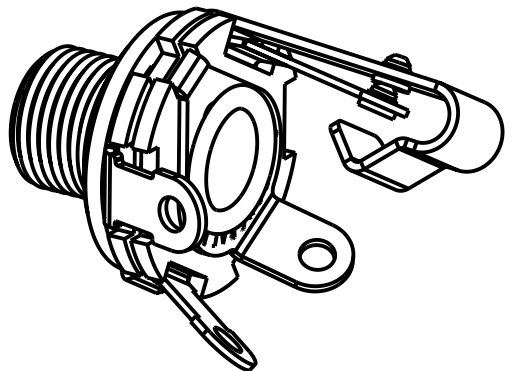
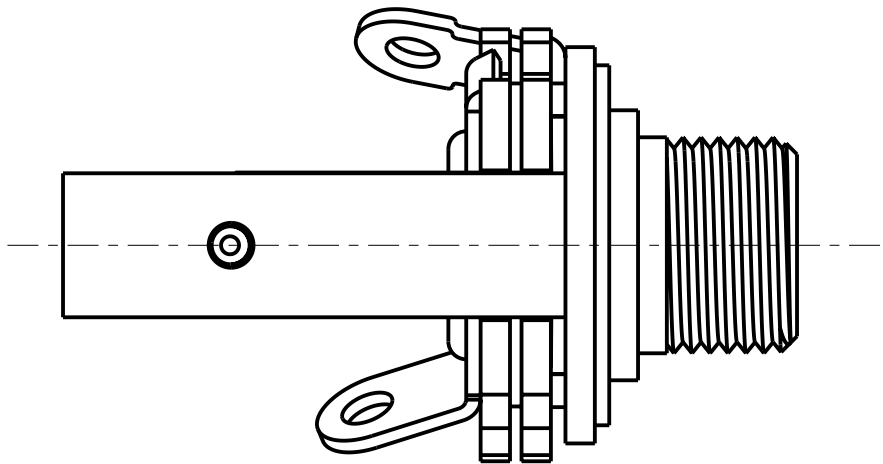
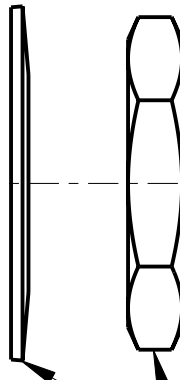
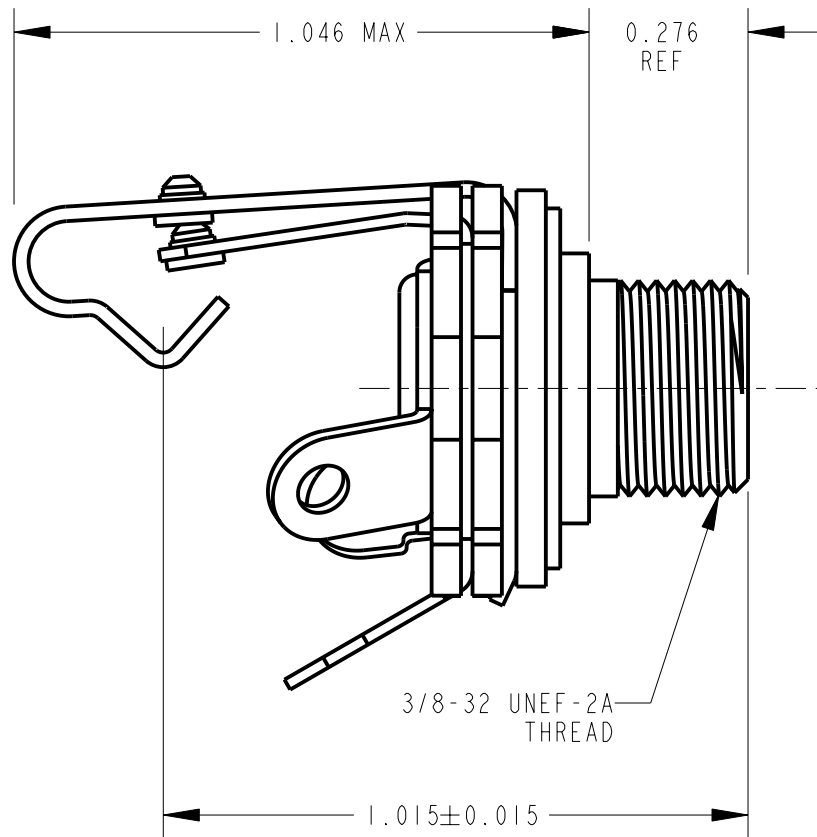
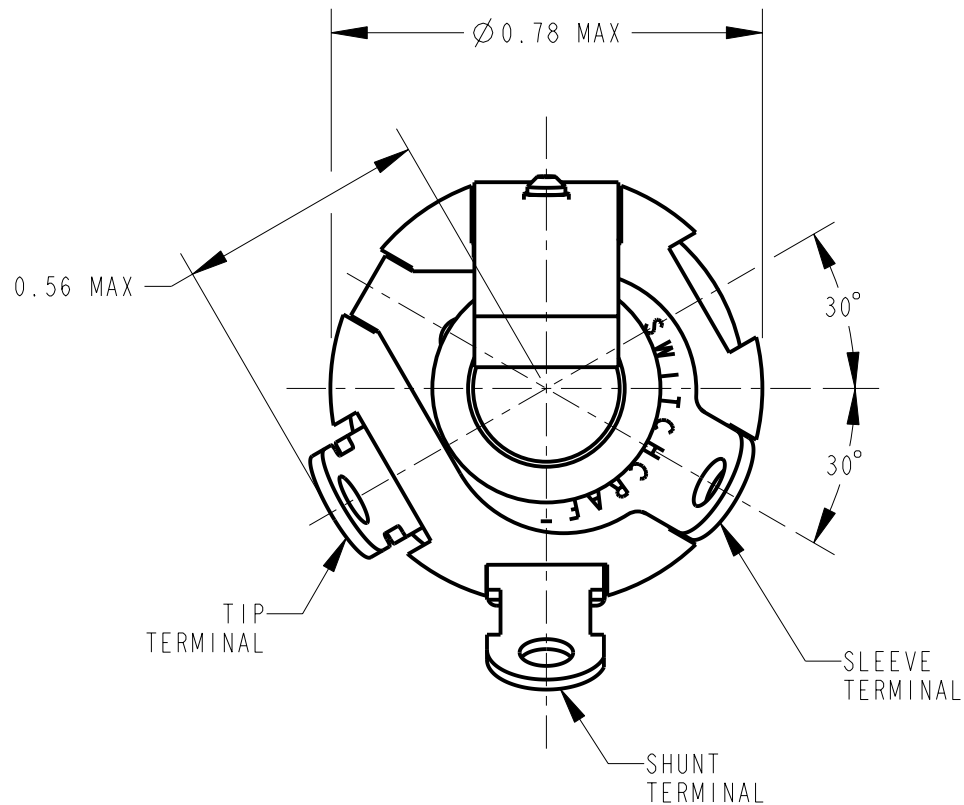


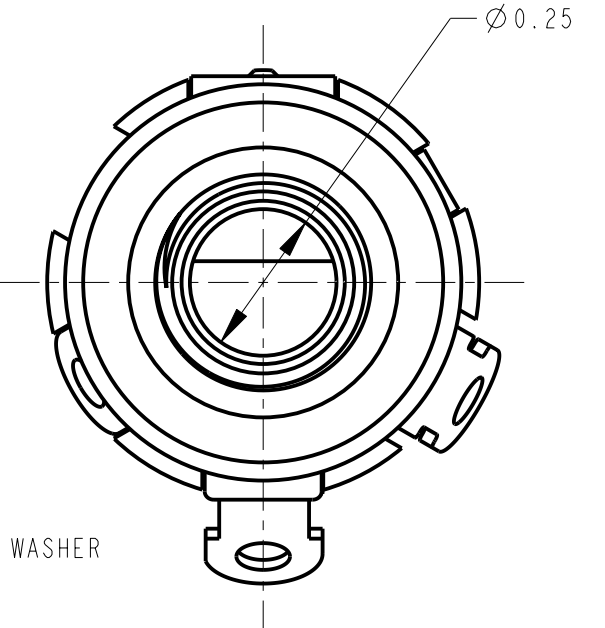
SCHEMATIC



SCALE 2:1



HEX NUT AND WASHER  
SEE NOTE 3



CUSTOMER DRAWING

NOTES:

1. ALL PARTS ARE MECHANICALLY INTERLOCKED.
2. MATERIALS:  
BUSHING - COPPER ALLOY, NICKEL PLATED  
TIP AND SHUNT SPRINGS - SPECIAL COPPER ALLOY  
SLEEVE TERMINAL - COPPER ALLOY TIN PLATED  
INSULATORS - PHENOLIC  
HARDWARE - COPPER ALLOY, NICKEL PLATED  
TERMINALS ARE TIN DIPPED WITH LEAD FREE SOLDER
3. K180 HEX NUT & K216 WASHER KIT SHIPPED UNASSEMBLED.
4. THIS PRODUCT IS RoHS COMPLIANT.

					★ STAR SYMBOL DENOTES CRITICAL DIMENSION	THIS DRAWING DESCRIBES A DESIGN CONSIDERED PROPRIETARY IN NATURE, DEVELOPED AND MANUFACTURED BY SWITCHCRAFT INC. AND IS RELEASED ON A CONFIDENTIAL BASIS FOR IDENTIFICATION PURPOSES ONLY.										
					UNLESS OTHERWISE SPECIFIED 1. ALL DIMENSIONS IN INCHES - TWO PLACE DECIMALS ±0.01 - THREE PLACE DECIMALS ±0.005 - ANGLES ±1° - ALL DIA. CONCENTRIC WITHIN 0.005 T.I.R. 2. FEATURES ON THE SAME CENTERLINE MUST BE ALIGNED WITHIN ±0.002 3. REMOVE ALL BURRS	SIZE	WIDTH		MULT		LBS/M		TEMPER			
						FINISH SPEC No.					MATERIAL SPEC No.					
						FIRST USED ON			SCALE 3:1			<b>Switchcraft®</b>				
						DATE DRAWN 19-Sep-12	BY TJK	CHKD TJK 9/19/12		APVD TJK 9/19/12						
											SHEET   OF					
REV	ECO NUMBER	DATE	BY	APVD	NAME LITTEL-JAX FOR PJ-055 PLUG, RoHS					PART No. C12AX					REV B	
REVISIONS					DO NOT SCALE DRAWING											

# Mouser Electronics

Authorized Distributor

Click to View Pricing, Inventory, Delivery & Lifecycle Information:

[Switchcraft:](#)

[C12AX](#)