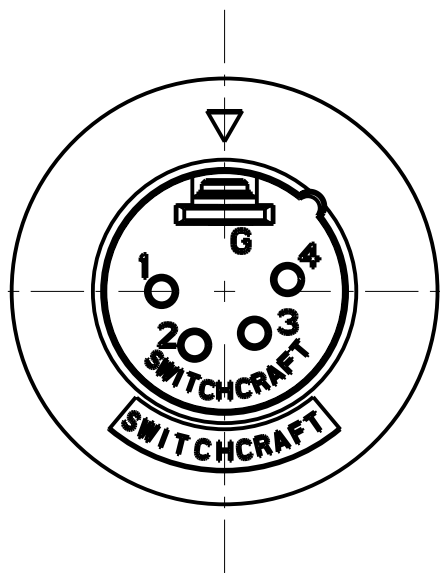
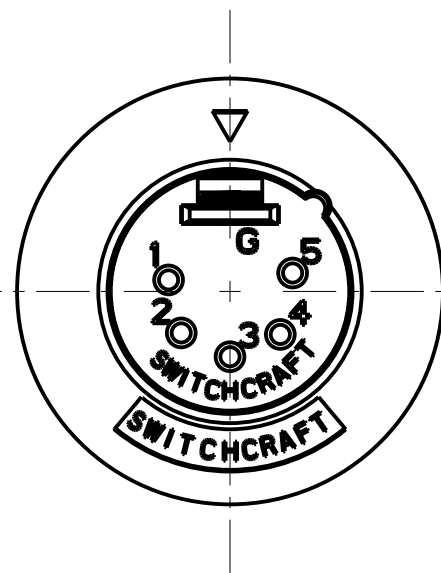


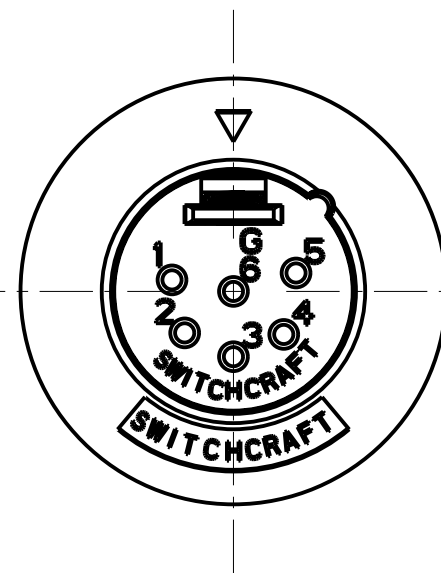
3 PIN



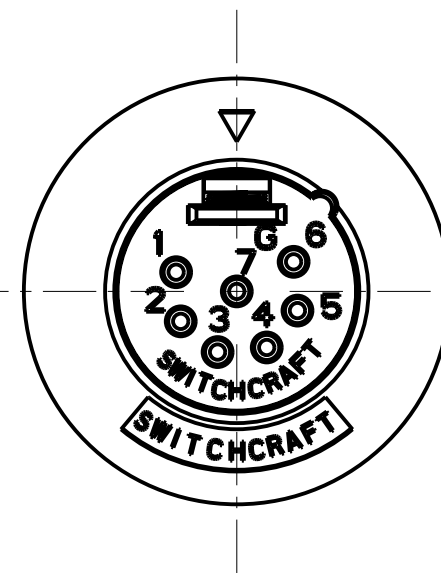
4 PIN



5 PIN



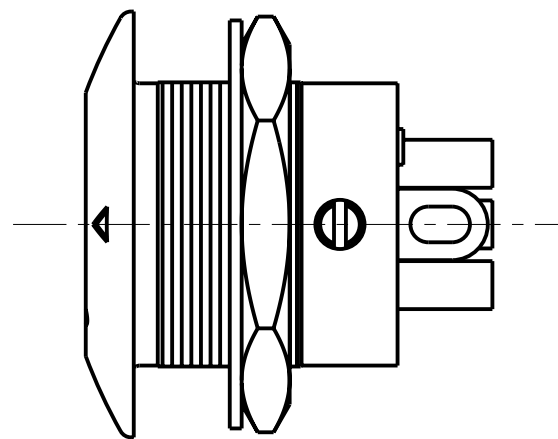
6 PIN



7 PIN

NOTES:

1. ALL DIMENSIONS REF. UNLESS OTHERWISE SPECIFIED.



STANDARD SERIES

SCREW - STAINLESS STEEL  
NUT - BRASS, NICKEL PLATED  
HOUSING - ZINC, NICKEL PLATED  
SOLDER TERMINAL - BRASS, ELECTRO TIN  
INSULATOR - POLYESTER, GREEN (UL94V-0)  
CONTACT PIN - BRASS, SILVER PLATED

B M

CONTACT PLATING  
BLANK = SILVER (STANDARD)  
AU = GOLD

HOUSING FINISH  
BLANK = NICKEL PLATE (STANDARD)  
B = BLACK

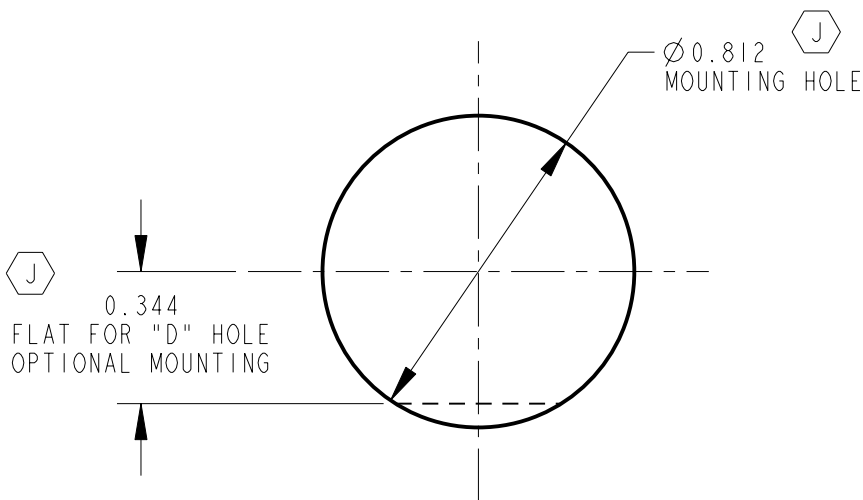
NO. OF CONTACTS:  
3 = 3 CONTACTS  
4 = 4 CONTACTS  
5 = 5 CONTACTS  
6 = 6 CONTACTS  
7 = 7 CONTACTS

PROFESSIONAL SERIES

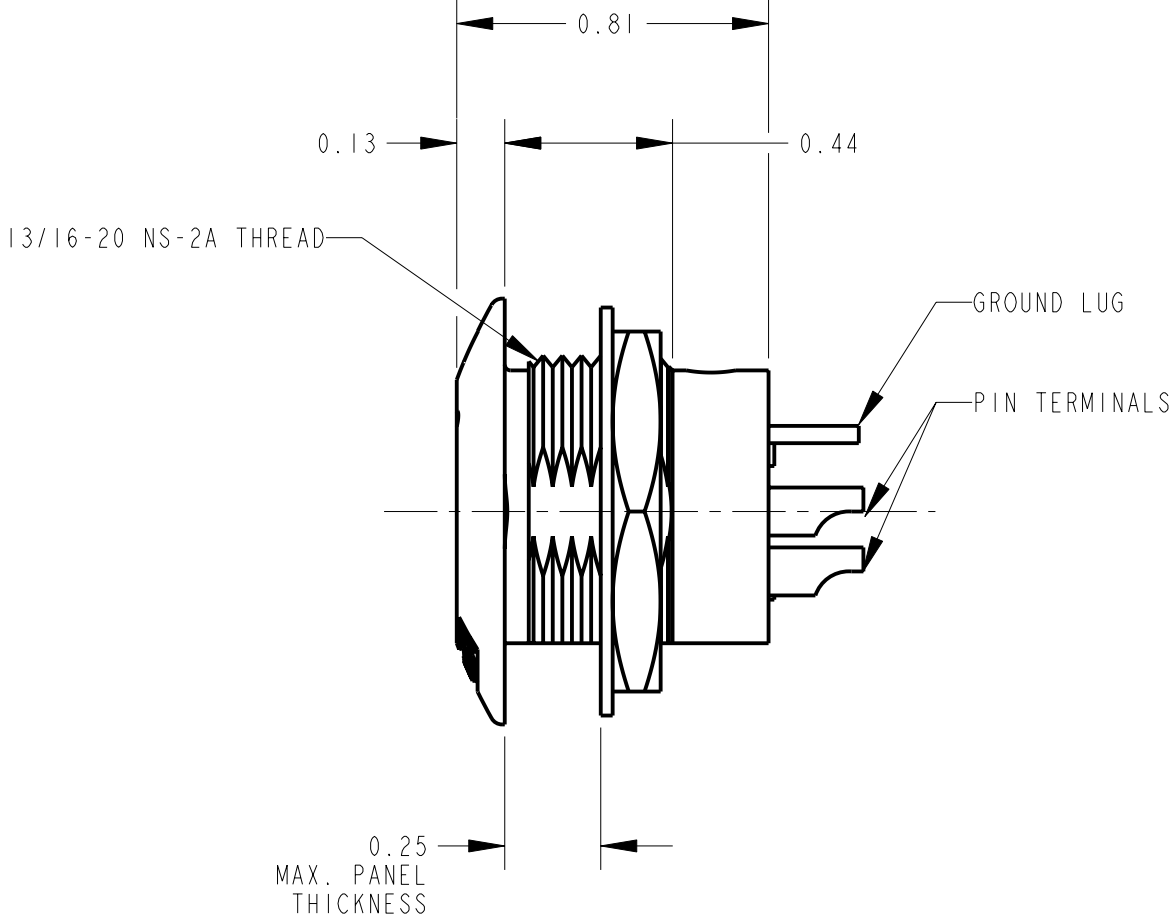
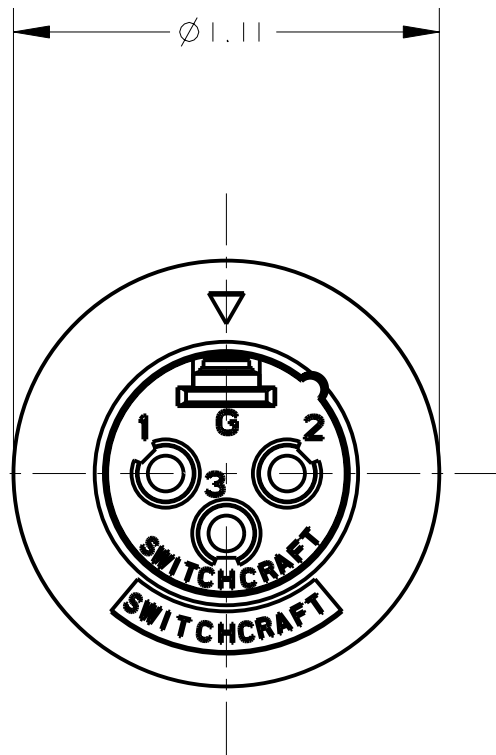
SAME AS ABOVE EXCEPT  
CONTACT PIN - PHOSPHOR BRONZE, GOLD OVER NICKEL

QGP 29

NO. OF CONTACTS:  
3 = 3 CONTACTS  
4 = 4 CONTACTS  
5 = 5 CONTACTS  
6 = 6 CONTACTS  
7 = 7 CONTACTS



RECOMMENDED PANEL CUT-OUT



CUSTOMER DRAWING

G	22383	9-30-99	JL	DG	<div>★ STAR SYMBOL DENOTES CRITICAL DIMENSION</div> <div>UNLESS OTHERWISE SPECIFIED</div> <div>1. ALL DIMENSIONS IN INCHES - TWO PLACE DECIMALS ±0.01 - THREE PLACE DECIMALS ±0.005 - ANGLES ±1° - ALL DIA. CONCENTRIC WITHIN 0.005 T.I.R.</div> <div>2. FEATURES ON THE SAME CENTERLINE MUST BE ALIGNED WITHIN ±0.002</div> <div>3. REMOVE ALL BURRS</div> <div>DO NOT SCALE DRAWING</div>	THIS DRAWING DESCRIBES A DESIGN CONSIDERED PROPRIETARY IN NATURE, DEVELOPED AND MANUFACTURED BY SWITCHCRAFT INC. AND IS RELEASED ON A CONFIDENTIAL BASIS FOR IDENTIFICATION PURPOSES ONLY.					
F	ECO #21070	2-3-97	MM	RB		SIZE	WIDTH		MULT	LBS/M	TEMPER
E	ECO #21035	2-3-97	MM	RB		FINISH	MATERIAL			SPEC No.	
D	20627	1-20-96	SG	SG		SPEC No.					
						FIRST USED ON		SCALE 2:1		<div>Switchcraft®</div> <div>SHEET   OF  </div>	
J	26363	3-19-09	TJK	TJK		DATE DRAWN	BY	CHKD	APVD		
H	23590	12-27-00	RJ	DK		8-Aug-94	SG	8-10-94	SG		
REV	ECO NUMBER	DATE	BY	APVD		NAME		PART No.			REV
REVISIONS						B SERIES MALE QG		B_M SERIES J			

# Mouser Electronics

Authorized Distributor

Click to View Pricing, Inventory, Delivery & Lifecycle Information:

Switchcraft:

[B4M](#) [B5M](#) [B6M](#) [B3M](#) [B3MB](#) [B7M](#)