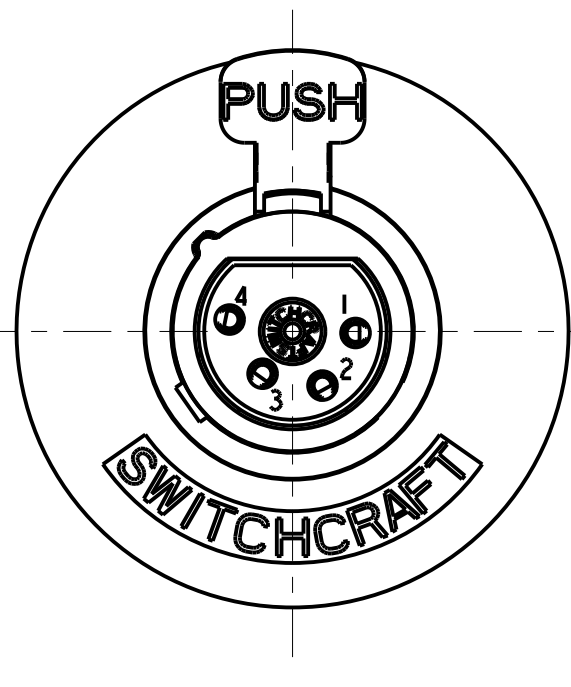
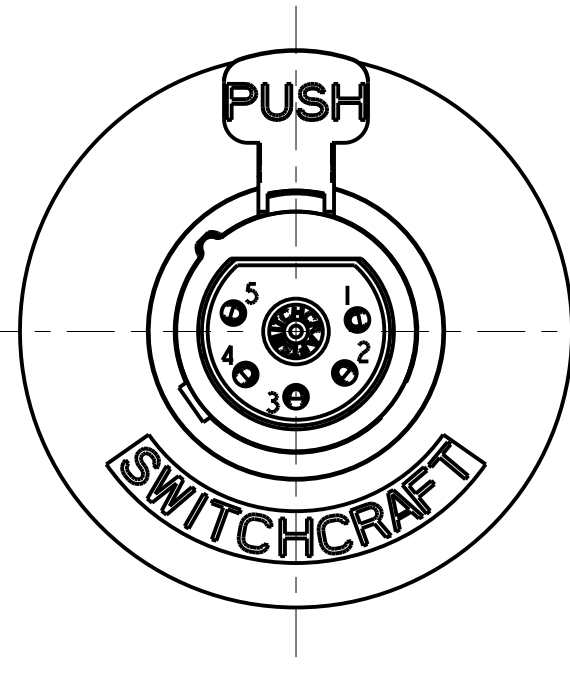


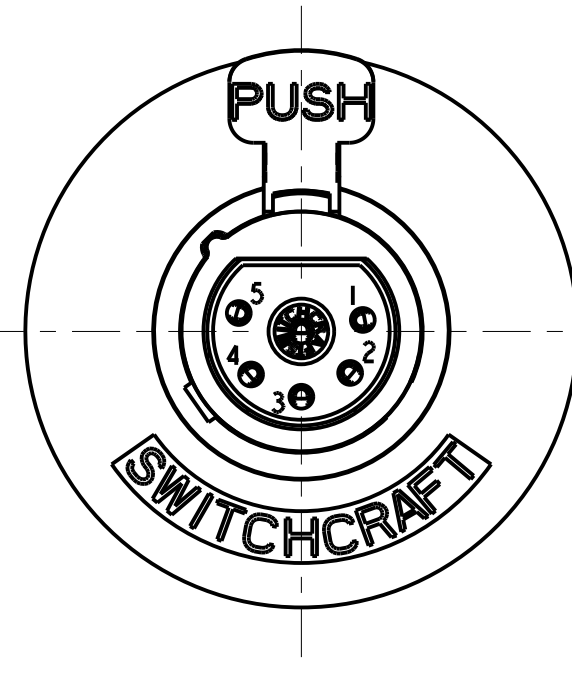
3 PIN



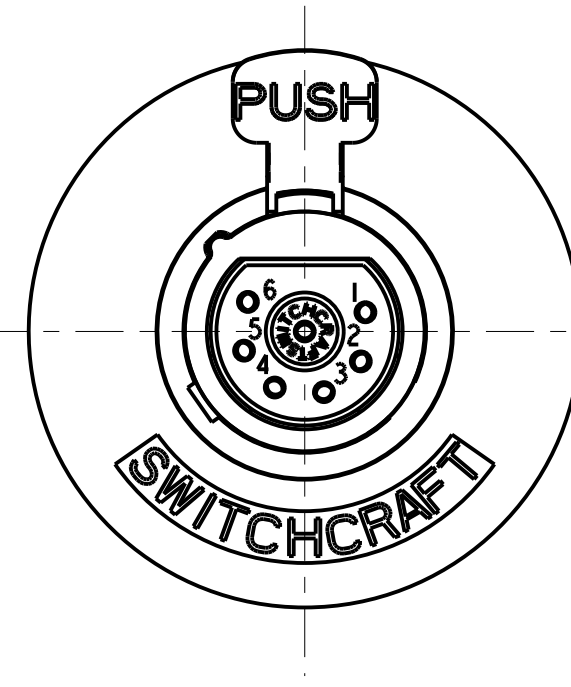
4 PIN



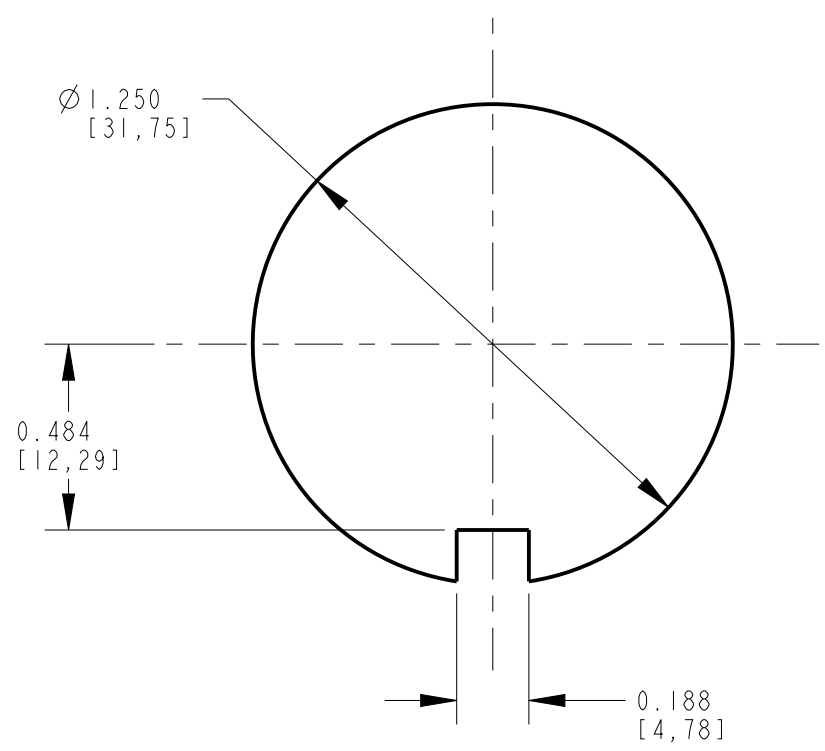
5 PIN



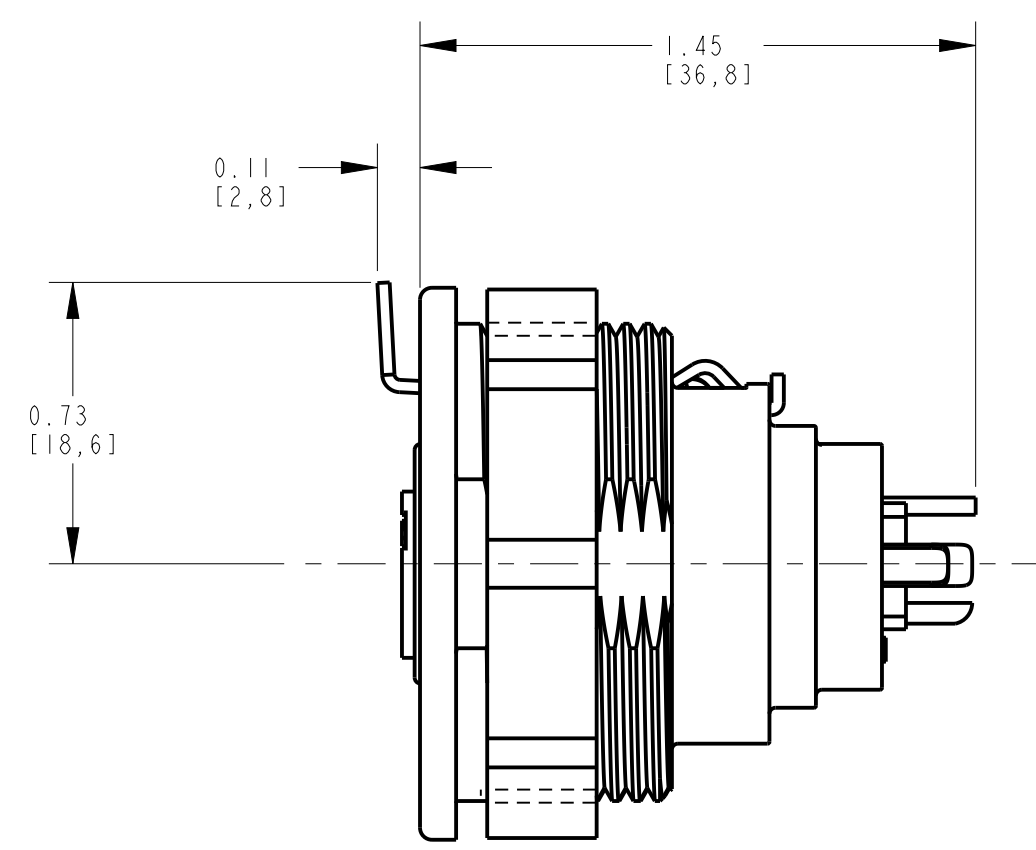
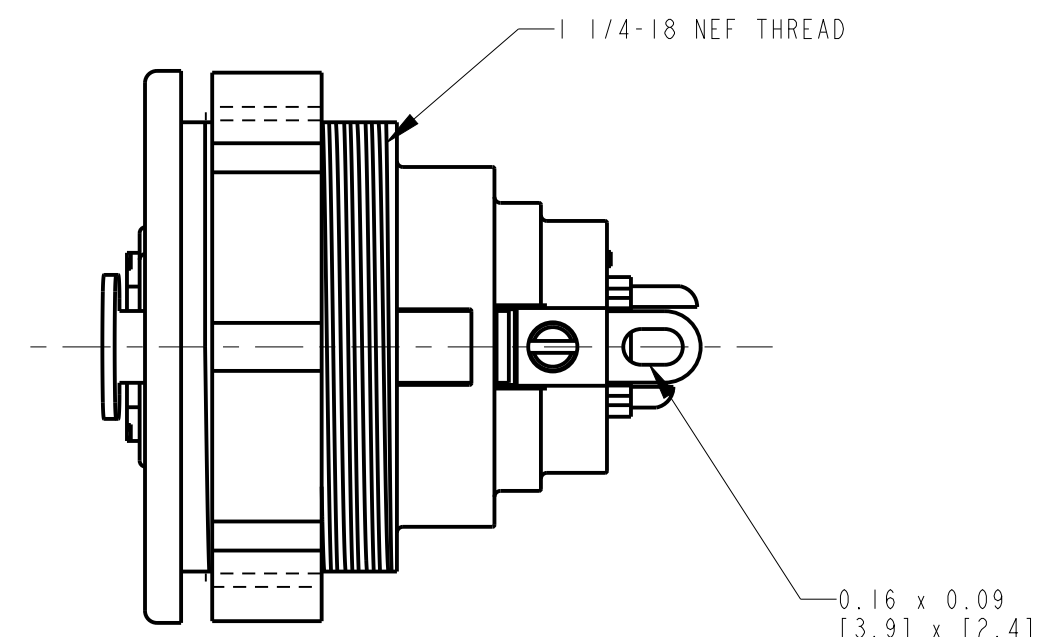
6 PIN



7 PIN



RECOMMENDED PANEL CUT-OUT



STANDARD SERIES

SCREW - STAINLESS STEEL
SHELL - STAINLESS STEEL
LATCH BUTTON - ZINC, NICKEL PLATED
INSULATOR - POLYESTER, GREEN
SOLDER TERMINAL - BRASS, ELECTRO TIN
LATCH SPRING - STAINLESS STEEL
CONTACT PIN - PHOSPHOR BRONZE, SILVER PLATED
HOUSING - ZINC
NUT - ZINC, NICKEL PLATED
RELEASE LEVER - STEEL NICKEL PLATED

B

F

L

HOUSING FINISH: SEE NOTE 2
BLANK = NICKEL PLATE (STANDARD)
BX = BLACK, RoHS

NO. OF CONTACTS:
3 = 3 CONTACTS
4 = 4 CONTACTS
5 = 5 CONTACTS
6 = 6 CONTACTS
7 = 7 CONTACTS

- NOTES:
- 1. ALL DIMENSIONS REF. UNLESS OTHERWISE SPECIFIED.
 - 2. BLACK HOUSING AND INSERT WITH SATIN NICKEL PLATED LATCH.
 - 3. THIS PRODUCT IS RoHS COMPLIANT.

CUSTOMER DRAWING

★ STAR SYMBOL DENOTES CRITICAL DIMENSION		THIS DRAWING DESCRIBES A DESIGN CONSIDERED PROPRIETARY IN NATURE, DEVELOPED AND MANUFACTURED BY SWITCHCRAFT INC. AND IS RELEASED ON A CONFIDENTIAL BASIS FOR IDENTIFICATION PURPOSES ONLY.	
UNLESS OTHERWISE SPECIFIED		SIZE WIDTH MULT LBS/M TEMPER	
1. ALL DIMENSIONS IN INCHES - TWO PLACE DECIMALS ±0.01 - THREE PLACE DECIMALS ±0.005 - FRACTIONAL DIMENSIONS ±1/64 - ANGLES ±1° - ALL DIA. CONCENTRIC WITHIN 0.005 T.I.R.		FINISH SPEC No. MATERIAL SPEC No.	
2. FEATURES ON THE SAME CENTER LINE MUST BE ALIGNED WITHIN ±0.002		FIRST USED ON SCALE 2:1	
3. REMOVE ALL BURRS		DATE DRAWN BY CHKD APVD 11-Dec-93 SG 7-11-94 7-11-94	
DO NOT SCALE DRAWING		NAME B SERIES FEMALE OG, RoHS	
REVISIONS		SHEET 1 OF 1	
		PART No. B_F SERIES	
		REV M	

Pro/Engineer CAD File

C

Mouser Electronics

Authorized Distributor

Click to View Pricing, Inventory, Delivery & Lifecycle Information:

Switchcraft:

[B3F](#) [B6F](#) [B3FBX](#) [B4F](#) [B5F](#) [B7F](#) [B3FPKG10](#)