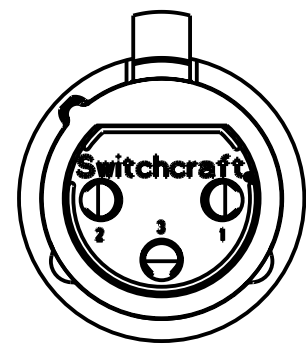
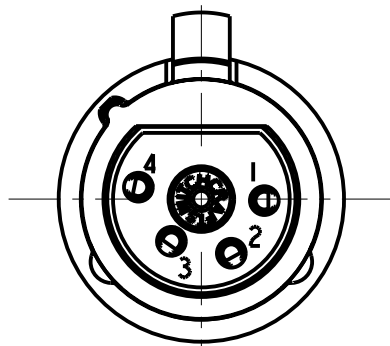


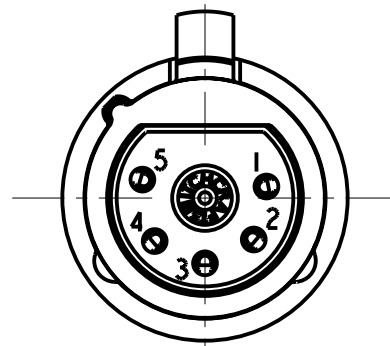
8 7 6 5 4 3 2 1



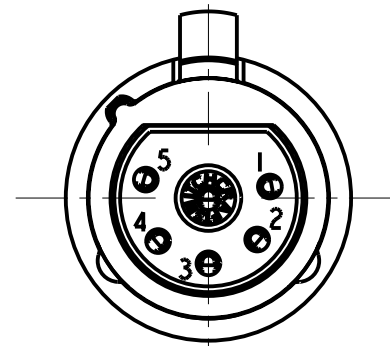
3 PIN



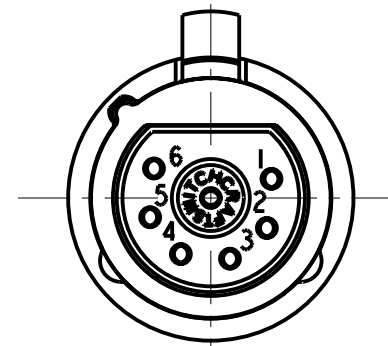
4 PIN



5 PIN



6 PIN



7 PIN

STANDARD SERIES

INSERT SCREW - STAINLESS STEEL  
FLEX SCREW - STEEL, NICKEL PLATED  
HOUSING - ZINC, NICKEL PLATED  
SHELL - STAINLESS STEEL  
LATCH BUTTON - ZINC, NICKEL PLATED  
LATCH SPRING - STAINLESS STEEL  
CONTACTOR - BERYLLIUM COPPER, NICKEL PLATE  
TUBULAR INSULATOR - MYLAR  
SOLDER TERMINAL - BRASS, ELECTRO TIN  
FLEX RELIEF - HI-FAX, BLACK - STANDARD (X)  
CLAMP PLATE - STAINLESS STEEL  
INSULATORS - POLYESTER, GREEN  
CONTACTS - BRASS, SILVER PLATED

- A F
- COLOR OF FLEX RELIEF  
01 = BROWN  
02 = RED  
03 = ORANGE  
04 = YELLOW  
05 = GREEN  
06 = BLUE  
07 = VIOLET  
08 = GRAY  
09 = WHITE  
11 = TAN  
12 = PINK  
13 = DARK BLUE
- CONTACT PLATING  
BLANK = SILVER (STANDARD)  
AU = GOLD
- HOUSING FINISH (SEE NOTE 2)  
BLANK = NICKEL PLATE (STANDARD)  
BX = BLACK, RoHS
- LATCH TYPE  
BLANK = STANDARD LATCHLOCK  
D = FAS-DIS-CONNECT DETENT (SEE FIGURE 3)
- FLEX RELIEF SIZE  
BLANK = STANDARD SIZE (0.210 TO 0.300)  
L = LARGE CABLES (0.300 TO .0328)  
S = SMALL CABLES (0.105 TO 0.205)
- NO. OF CONTACTS:  
3 = 3 CONTACTS  
4 = 4 CONTACTS  
5 = 5 CONTACTS  
6 = 6 CONTACTS  
7 = 7 CONTACTS

PROFESSIONAL SERIES

(X) SAME AS ABOVE EXCEPT  
CONTACT PIN - PHOSPHOR BRONZE, GOLD OVER NICKEL  
HOUSING - NON REFLECTIVE VEL-TONE FINISH  
FLEX RELIEF - GRAY

OGP 22

(X) NO. OF CONTACTS:  
3 = 3 CONTACTS

NOTE:

1. ALL DIMENSIONS REF. UNLESS OTHERWISE SPECIFIED.
- (X) 2. BLACK HOUSING AND INSERT WITH SATIN NICKEL PLATED LATCH.
- (X) 3. THIS PRODUCT IS RoHS COMPLIANT.

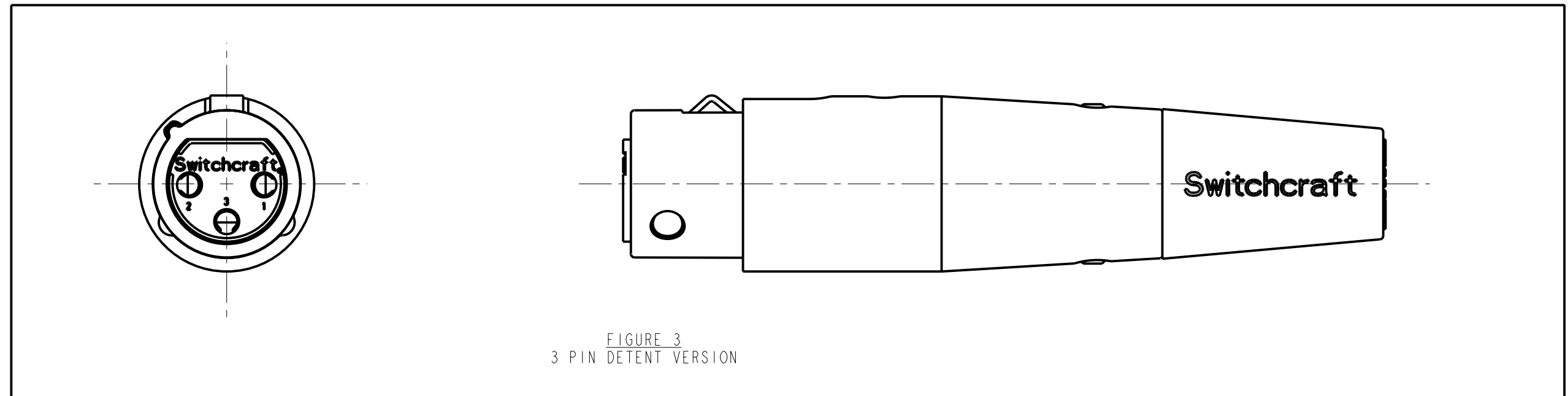
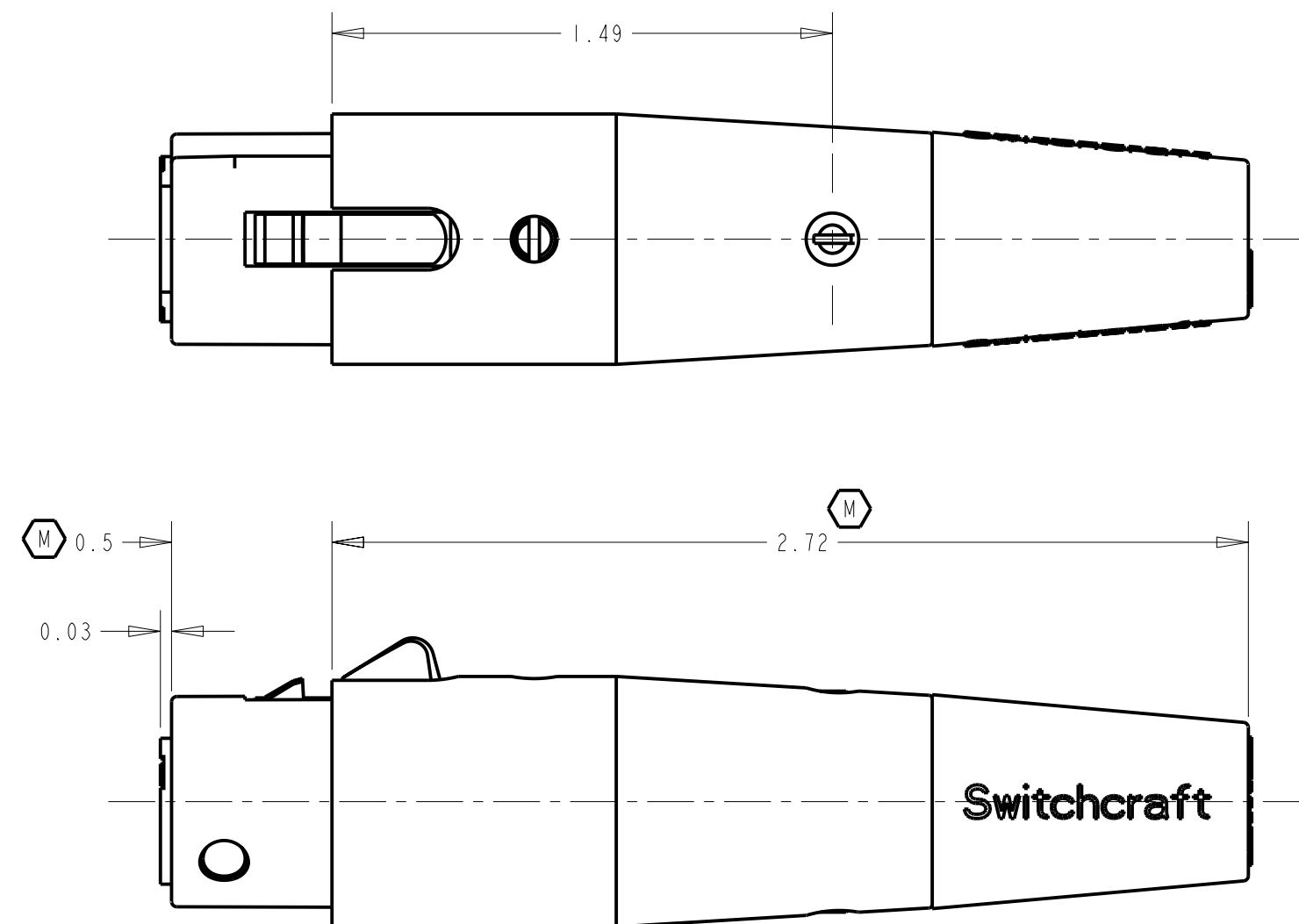


FIGURE 3  
3 PIN DETENT VERSION



CUSTOMER DRAWING

★ STAR SYMBOL DENOTES CRITICAL DIMENSION						THIS DRAWING DESCRIBES A DESIGN CONSIDERED PROPRIETARY IN NATURE, DEVELOPED AND MANUFACTURED BY SWITCHCRAFT INC. AND IS RELEASED ON A CONFIDENTIAL BASIS FOR IDENTIFICATION PURPOSES ONLY.				
UNLESS OTHERWISE SPECIFIED						SIZE	WIDTH	MULT	LBS/M	TEMPER
1. ALL DIMENSIONS IN INCHES - TWO PLACE DECIMALS ±0.01 - THREE PLACE DECIMALS ±0.005 - ANGLES ±1° - ALL DIA. CONCENTRIC WITHIN 0.005 T.I.R.						FINISH SPEC No.		MATERIAL SPEC No.		
2. FEATURES ON THE SAME CENTERLINE MUST BE ALIGNED WITHIN ±0.002						FIRST USED ON		SCALE 2:1		<b>Switchcraft®</b>
3. REMOVE ALL BURRS						DATE DRAWN	BY	CHKD	APVD	
DO NOT SCALE DRAWING						10-26-93	SG	SG	GHJ	
REVISIONS						NAME "A" SERIES FEMALE OG, RoHS				PART No. A_F_SERIES
										REV X

# Mouser Electronics

Authorized Distributor

Click to View Pricing, Inventory, Delivery & Lifecycle Information:

Switchcraft:

[QGP362](#) [QGP363](#) [A3FD](#)