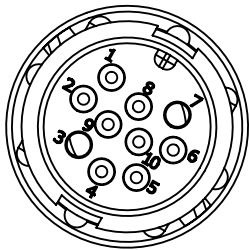


NOTES:

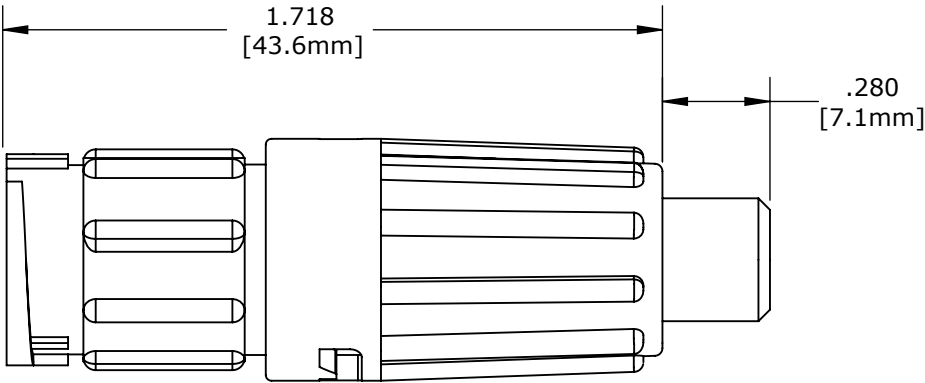
- 1. CONTACTS ARE ASSEMBLED INTO CONNECTOR.
- 2. PARTS ARE TO BE BAGGED AS A KIT.
- 3. ALL DIMENSIONS ARE FOR REFERENCE ONLY.

KIT PART NO.	CABLE OD.
X8882-10PG-522	.220-.250 [5.6-6.4mm]
X8882-10PG-528	.265-.285 [6.7-7.2mm]

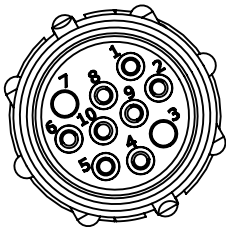
NO. OF CONTACTS — GROMMET SIZES



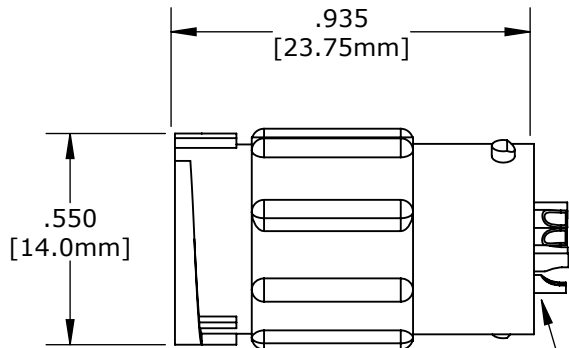
FACE VIEW



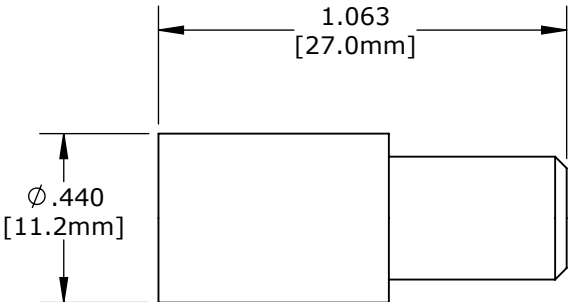
ASSEMBLED KIT VIEW  
W8882-10PG-522 SHOWN



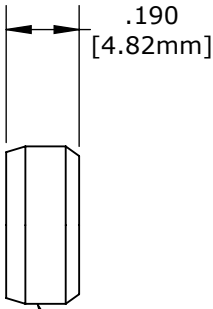
WIRE VIEW



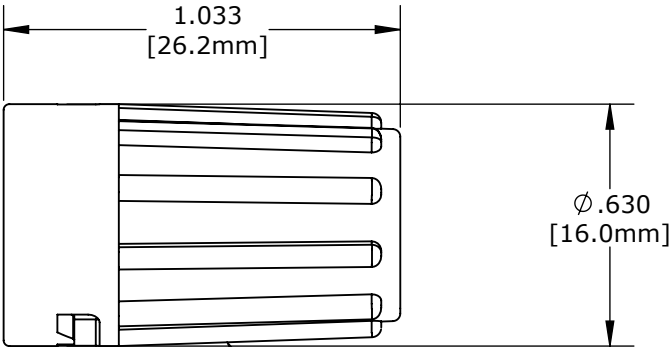
IN LINE CONNECTOR



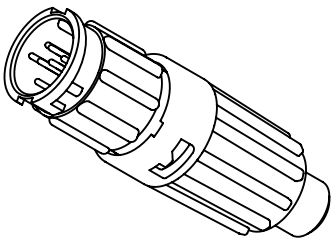
GROMMET, LONG



CABLE GRIP




BACKSHELL, LONG



ASSEMBLED KIT  
FOR CUSTOMER REFERENCE

CUSTOMER DRAWING

CUSTOMER APPROVAL	
THIS DOCUMENT CONTAINS CONFIDENTIAL INFORMATION PROPRIETARY TO CONXALL CORPORATION. ANY REPRODUCTION, DISCLOSURE, OR USE OF THIS DOCUMENT /INFORMATION IS EXPRESSLY PROHIBITED UNLESS AUTHORIZED IN WRITING BY CONXALL CORPORATION.	
APPROVED BY: _____	
DATE: _____	

0A	AM	04/05/16	PREVIOUS PN WAS X13015-8882-10PG-XXX_REV0A		
REV.	INIT.	DATE	DESCRIPTION		
	AM	04/05/16	ORIG. DRAWN BY:	DATE:	 601 E. WILDWOOD VILLA PARK, IL 60181
ALL INFORMATION ILLUSTRATED IS THE PROPERTY OF "CONXALL CORPORATION." UNAUTHORIZED DUPLICATION OR DISTRIBUTION OF THIS DOCUMENT IS PROHIBITED.			CHECKED BY:		
ALL UNITS ARE IN FEET, INCHES, FRACTION OF INCHES AND DECIMALS.			APPROVED BY:		TITLE: IN-LINE CONNECTOR, KIT (10) #22 SOCKET CONTACT, SOLDER MINI-CON-X
UNLESS OTHERWISE SPECIFIED TOLERANCES: 3 PLACE DECIMALS ±.005 ANGLES ±1° FRACTIONS ±1/16			SCALE: NTS	SIZE: B	
△ = CRITICAL CHARACTERISTIC FLAG PER SPEC. XXXX			SHEET: 1 OF 1	DIRECTORY: SLW	CUSTOMER: STANDARD PRODUCT
			FILE:	PART NUMBER: W8882-10PG-5XX	REV 0A

# Mouser Electronics

Authorized Distributor

Click to View Pricing, Inventory, Delivery & Lifecycle Information:

Switchcraft:

[W8882-10PG-528](#) [W6882-9PG-528](#) [W6882-10PG-528](#)