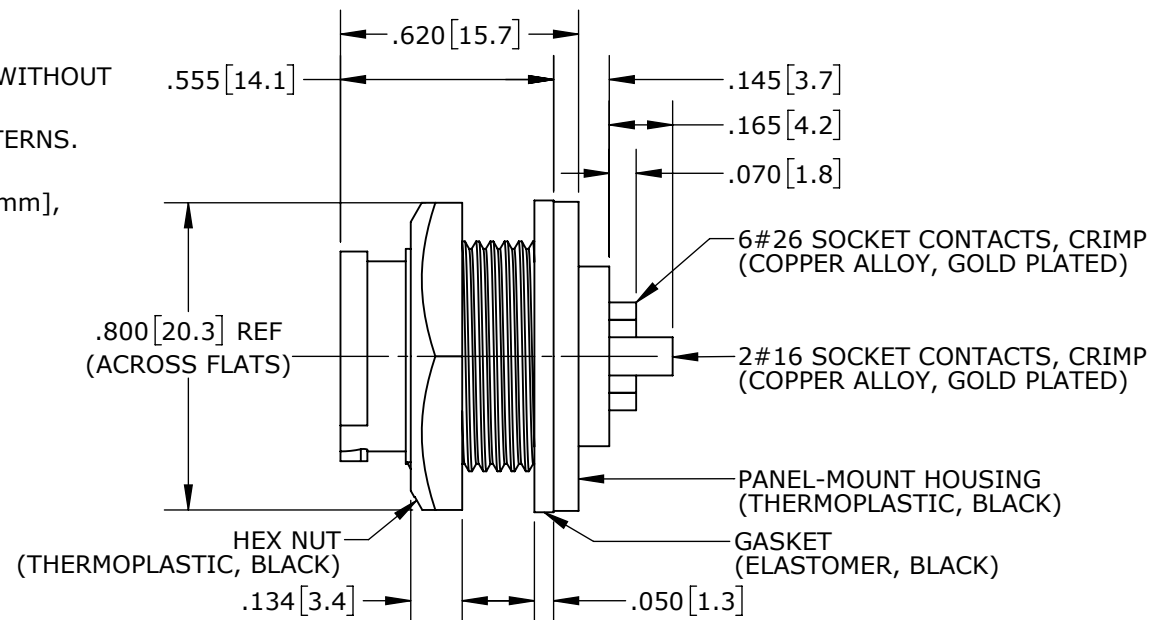
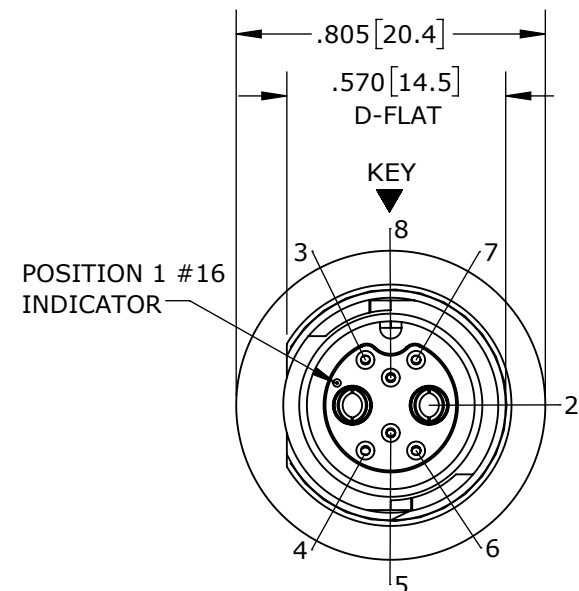


NOTES:

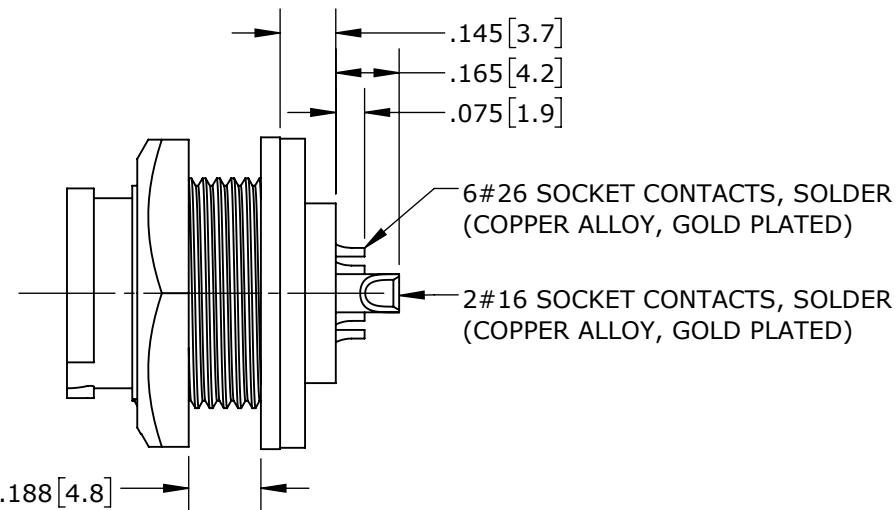
1. CRIMP CONTACTS SUPPLIED UNASSEMBLED AND WITHOUT EPOXY BACKING.
2. REFER TO DRAWING HPMIMIX FOR CONTACT PATTERNS.
3. HEX-NUT TORQUE: 8-10 IN-LB.
4. DIMENSIONS ARE REFERENCE ONLY, IN INCHES [mm], WITHIN ± 0.015 UNLESS OTHERWISE NOTED.



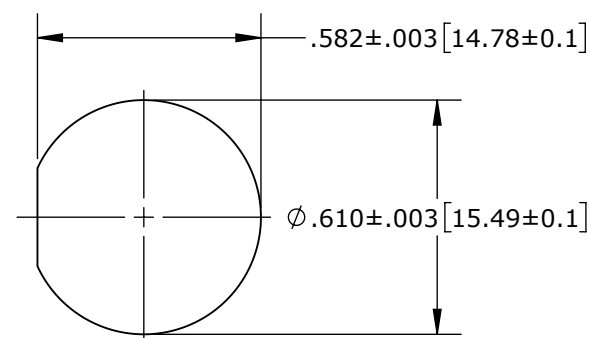
CRIMP CONTACTS (SHOWN ASSEMBLED)
W7A80-8SG-P-300 SHOWN



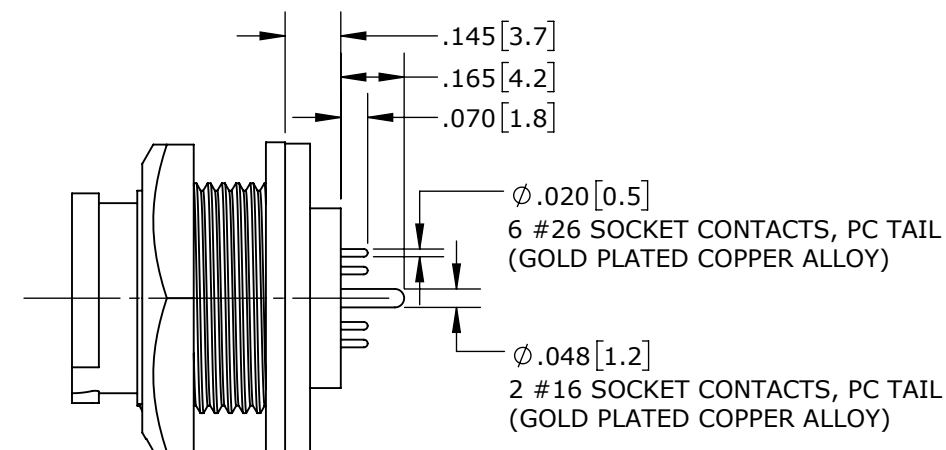
MATING FACE
W7A82-8SG-P-300 SHOWN



SOLDER CONTACTS
W7A82-8SG-P-300 SHOWN



RECOMMENDED PANEL CUTOUT



PC TAIL CONTACTS
W7A81-8SG-P-3ES SHOWN

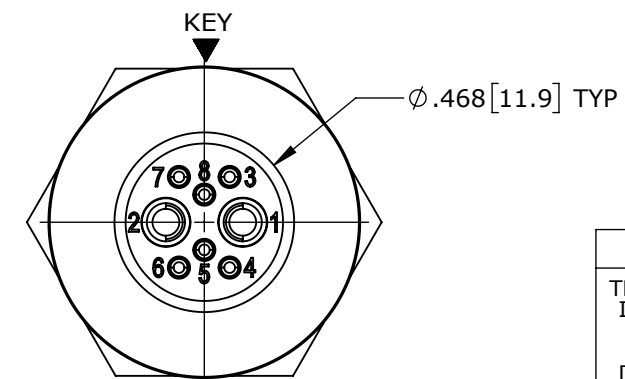
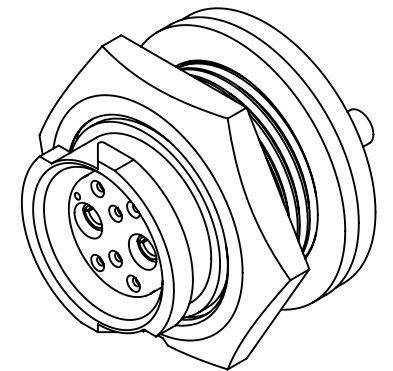
PANEL-MOUNT CONNECTOR PART NUMBERS:

W 7 A 8 X - 8 S G - P - 3XX

MIXED CONTACTS:
A = 2 #16 + 6 #26

CONTACTS STYLE:
0 = CRIMP
2 = SOLDER
1 = PC TAIL

EPOXY BACKING:
3ES = WITH EPOXY
300 = WITHOUT EPOXY



WIRING END
W7A82-8SG-P-300 SHOWN

CUSTOMER APPROVAL

THIS DOCUMENT CONTAINS CONFIDENTIAL INFORMATION PROPRIETARY TO CONXALL CORPORATION. ANY REPRODUCTION, DISCLOSURE, OR USE OF THIS DOCUMENT / INFORMATION IS EXPRESSLY PROHIBITED UNLESS AUTHORIZED IN WRITING BY CONXALL CORPORATION.

APPROVED BY: _____

DATE: _____

0A	PNK	01-12-18	PDR16014
REV.	INIT.	DATE	DESCRIPTION
ALL INFORMATION ILLUSTRATED IS THE PROPERTY OF "CONXALL CORPORATION." UNAUTHORIZED DUPLICATION OR DISTRIBUTION OF THIS DOCUMENT IS PROHIBITED.			ORIG. DRAWN BY: PNK DATE: 01-12-18 CHECKED BY:
ALL UNITS ARE IN FEET, INCHES, FRACTION OF INCHES AND DECIMALS.			APPROVED BY:
- CRITICAL CHARACTERISTIC FLAG PER SPEC. XXXX			SCALE: NTS SIZE: B SHEET: 1 OF 1 FILE: W7A8X-8SG-P-3XX_CD DIRECTORY: SLW
			TITLE: PANEL-MOUNT CONNECTOR 2 #16 + 6 #26 SOCKET CONTACTS INSTA-CLICK™ MINI-CON-X CUSTOMER: STANDARD PRODUCT PART NUMBER: W7A8X-8SG-P-3XX REV 0A

RoHS COMPLIANT

Mouser Electronics

Authorized Distributor

Click to View Pricing, Inventory, Delivery & Lifecycle Information:

Switchcraft:

[W7A82-8SG-P-300](#) [W7A81-8SG-P-3ES](#) [W7A82-8SG-P-3ES](#) [W7A81-8SG-P-300](#) [W7A80-8SG-P-300](#)