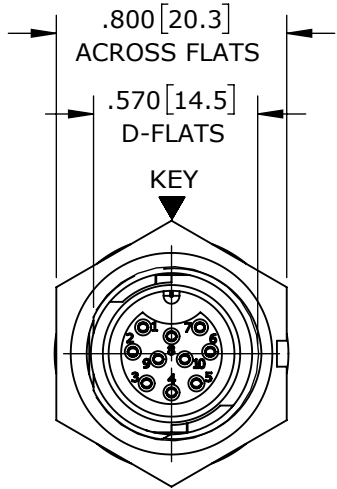
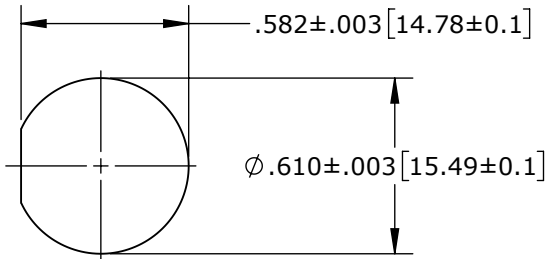


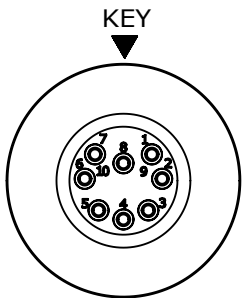
- NOTES:
1. CRIMP CONTACTS SUPPLIED UNASSEMBLED AND WITHOUT EPOXY BACKING.
 2. HEX-NUT TORQUE: 8-10 IN-LB.
 3. DIMENSIONS ARE REFERENCE ONLY, IN INCHES [mm], WITHIN ±0.015 UNLESS OTHERWISE NOTED.



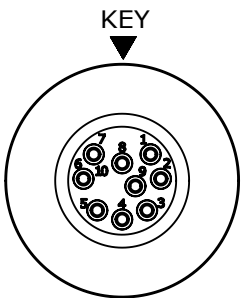
MATING FACE
W7882-10SG-P-300 SHOWN



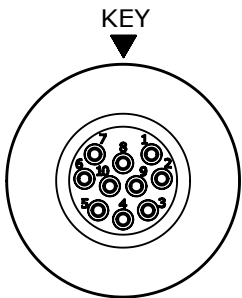
RECOMMENDED PANEL CUTOUT



W7882-8SG-P-3ES

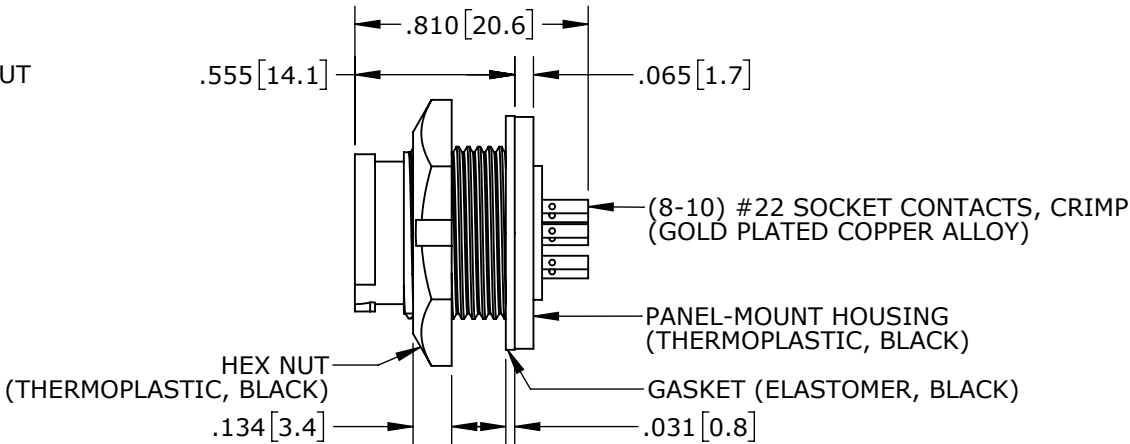


W7882-9SG-P-3ES

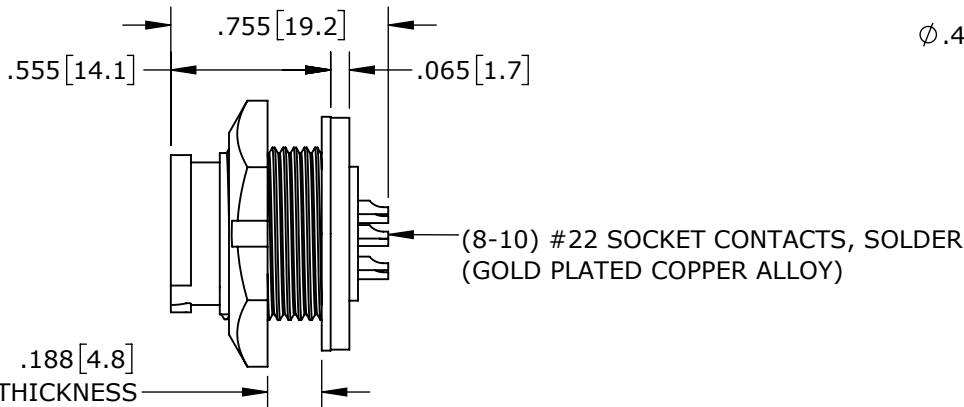


W7882-10SG-P-300

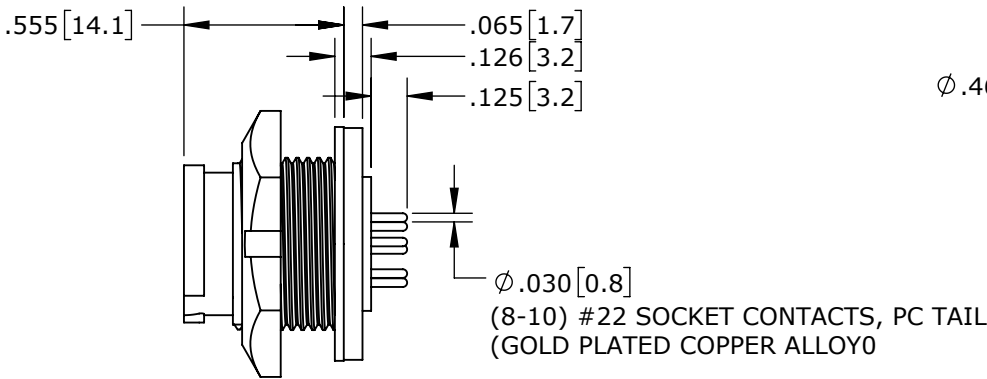
CONTACT ARRANGEMENTS (WIRING END SHOWN)



CRIMP CONTACTS (SHOWN ASSEMBLED)
W7880-10SG-P-300 SHOWN



SOLDER CONTACTS
W7882-10SG-P-300 SHOWN



PC TAIL CONTACTS
W7883-10SG-P-3ES SHOWN

PANEL-MOUNT CONNECTOR PART NUMBERS:

W 7 8 8 X - X S G - P - 3 X X

CONTACTS STYLE:

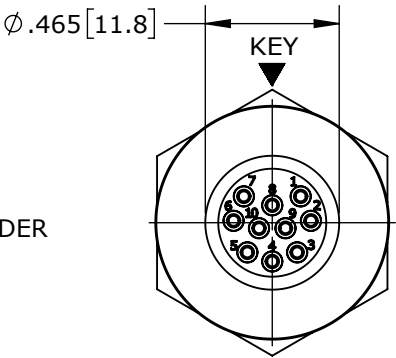
- 0 = CRIMP
- 2 = SOLDER
- 3 = PC TAIL

OF CONTACTS:

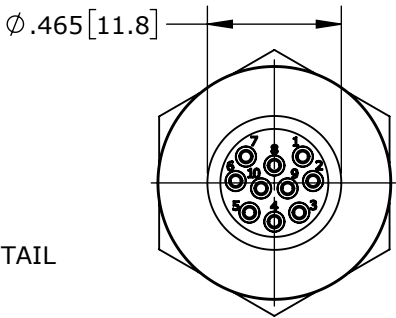
8-10 #22 SOCKETS

EPOXY BACKING:

- 3ES = WITH EPOXY
- 300 = WITHOUT EPOXY



WIRING END
W7882-10SG-P-300 SHOWN



WIRING END
W7882-10SG-P-300 SHOWN

CUSTOMER APPROVAL

THIS DOCUMENT CONTAINS CONFIDENTIAL INFORMATION PROPRIETARY TO CONXALL CORPORATION. ANY REPRODUCTION, DISCLOSURE, OR USE OF THIS DOCUMENT /INFORMATION IS EXPRESSLY PROHIBITED UNLESS AUTHORIZED IN WRITING BY CONXALL CORPORATION.

APPROVED BY: _____

DATE: _____

RoHS COMPLIANT

0A	PNK	03-15-18	PDR16014	
REV.	INIT.	DATE	DESCRIPTION	
	PNK	03-15-18	ORIG. DRAWN BY: DATE: 03-15-18	
ALL INFORMATION ILLUSTRATED IS THE PROPERTY OF "CONXALL CORPORATION." UNAUTHORIZED DUPLICATION OR DISTRIBUTION OF THIS DOCUMENT IS PROHIBITED.			CHECKED BY:	
ALL UNITS ARE IN FEET, INCHES, FRACTION OF INCHES AND DECIMALS.			APPROVED BY:	
= CRITICAL CHARACTERISTIC FLAG PER SPEC. XXXX			TITLE: PANEL-MOUNT CONNECTOR 8-10 #22 SOCKET CONTACTS INSTA-CLICK™ MINI-CON-X	
SCALE	SIZE	SHEET	CUSTOMER: STANDARD PRODUCT	
NTS	B	1 OF 1	PART NUMBER: W788X-XSG-P-3XX	
FILE: W788X-XSG-P-3XX_CD	DIRECTORY: SLW			REV 0A

Mouser Electronics

Authorized Distributor

Click to View Pricing, Inventory, Delivery & Lifecycle Information:

Switchcraft:

[W7882-9SG-P-3ES](#) [W7880-9SG-P-300](#) [W7882-9SG-P-300](#) [W7881-9SG-P-300](#) [W7881-9SG-P-3ES](#)