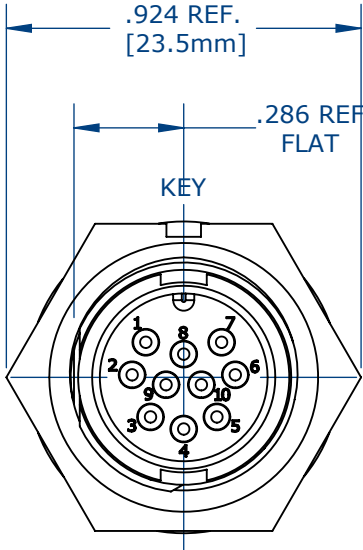


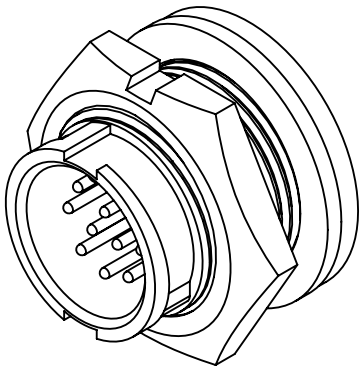
NOTES:

1. SOLDER CUP PIN CONTACTS ARE INSTALLED (SHOWN).
2. ALL DIMENSIONS ARE FOR REFERENCE.

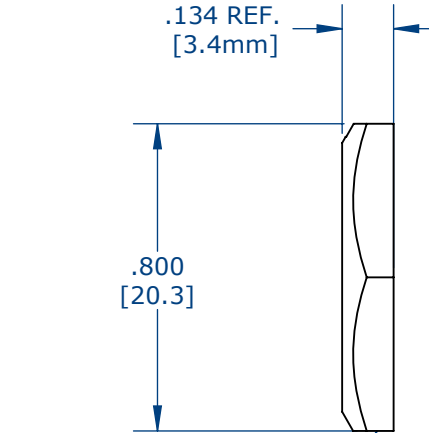
ASS'Y P/N	EPOXY
W7882-10PG-300	NO
W7882-10PG-3ES	YES



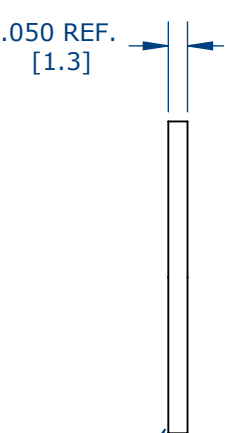
FACE VIEW
W7882-10PG-300 SHOWN



ASSEMBLED VIEW
FOR CUSTOMER REFERENCE

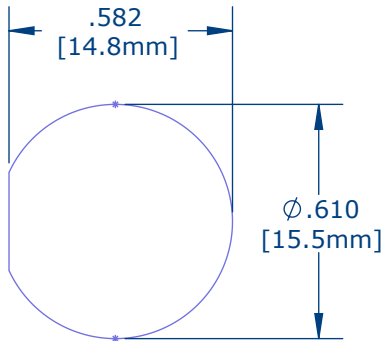
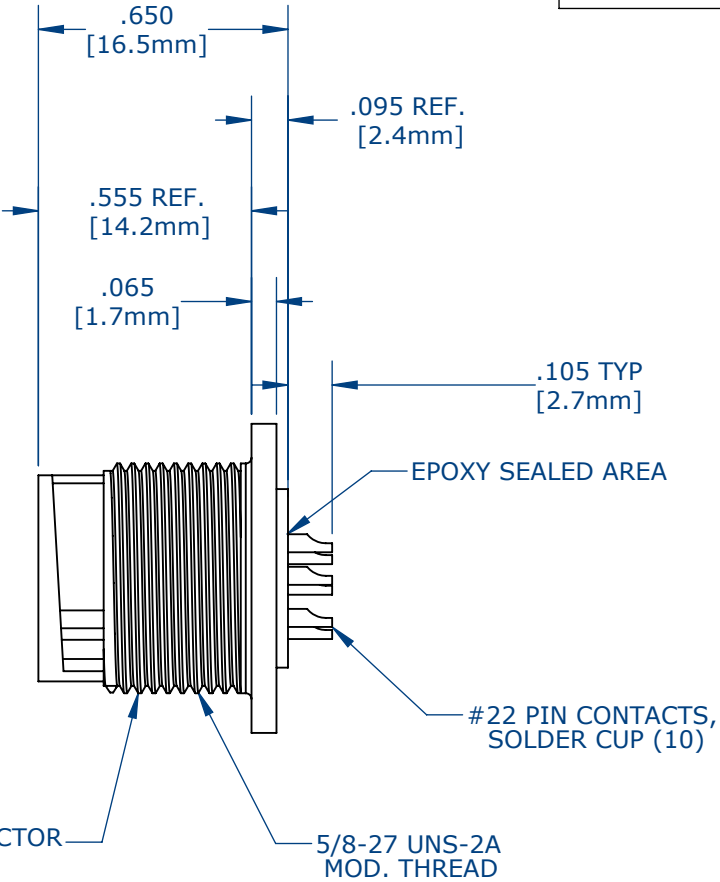


HEX NUT
.924IN ACROSS EDGE

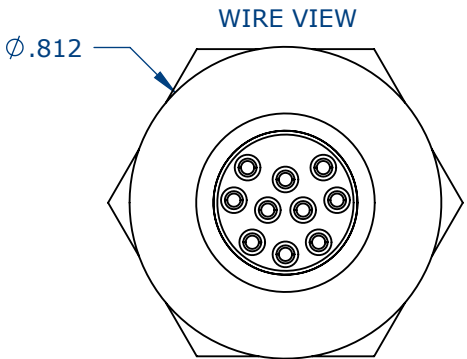


RUBBER GASKET

PANEL CONNECTOR



RECOMMENDED
PANEL CUT-OUT
TOLERANCE: ±.003



WIRE VIEW

CUSTOMER DRAWING

CUSTOMER APPROVAL

THIS DOCUMENT CONTAINS CONFIDENTIAL INFORMATION PROPRIETARY TO CONXALL CORPORATION. ANY REPRODUCTION, DISCLOSURE, OR USE OF THIS DOCUMENT /INFORMATION IS EXPRESSLY PROHIBITED UNLESS AUTHORIZED IN WRITING BY CONXALL CORPORATION.

APPROVED BY: _____
DATE: _____

0A	AM	04/05/16	FIRST DRAWN					
REV.	INIT.	DATE	DESCRIPTION					
<div>ALL INFORMATION ILLUSTRATED IS THE PROPERTY OF "CONXALL CORPORATION." UNAUTHORIZED DUPLICATION OR DISTRIBUTION OF THIS DOCUMENT IS PROHIBITED.</div>			ORIG. DRAWN BY: <div>AM</div>		DATE: <div>04/05/16</div>		<div>conxall</div> <div>601 E. WILDWOOD VILLA PARK, IL 60181</div>	
			CHECKED BY:					
<div>ALL UNITS ARE IN FEET, INCHES, FRACTION OF INCHES AND DECIMALS.</div> <div>UNLESS OTHERWISE SPECIFIED TOLERANCES: 3 PLACE DECIMALS ±.005 ANGLES ±1° FRACTIONS ±1/16</div>			APPROVED BY:		TITLE: <div>PANEL CONNECTOR ASSEMBLY (10) #22 PIN CONTACT, SOLDER MINI-CON-X</div>			
					CUSTOMER: <div>STANDARD PRODUCT</div>			
<div>▽ = CRITICAL CHARACTERISTIC, FLAG PER SPEC. XXXX</div>			SCALE <div>NTS</div>		SIZE <div>B</div>		SHEET <div>1 OF 1</div>	
			FILE: <div>W7882-10PG-3XX-CD</div>		DIRECTORY: <div>SLW</div>		PART NUMBER: <div>W7882-10PG-3XX</div>	
							REV <div>0A</div>	

Mouser Electronics

Authorized Distributor

Click to View Pricing, Inventory, Delivery & Lifecycle Information:

Switchcraft:

[W7882-10PG-3ES](#) [W7882-10PG-300](#)