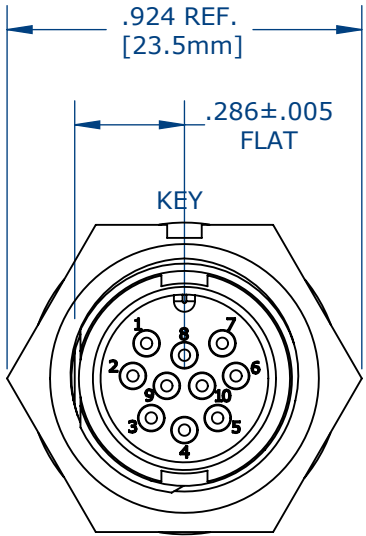


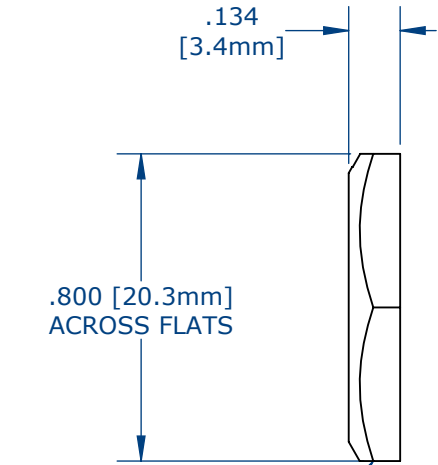
NOTES:

1. PC TAIL CONTACTS ARE INSTALLED INTO CONNECTOR (SHOWN)
2. ALL DIMENSIONS ARE FOR REFERENCE.

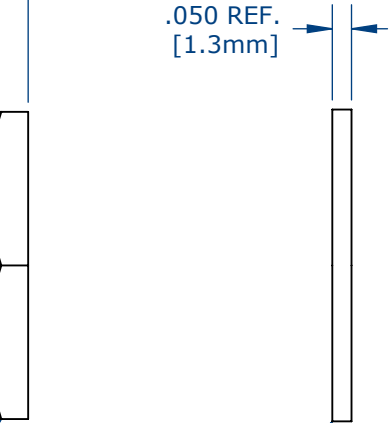
ASS'Y P/N	EPOXY
W7881-10PG-300	NO
W7881-10PG-3ES	YES



FACE VIEW  
W7881-10PG-300 SHOWN

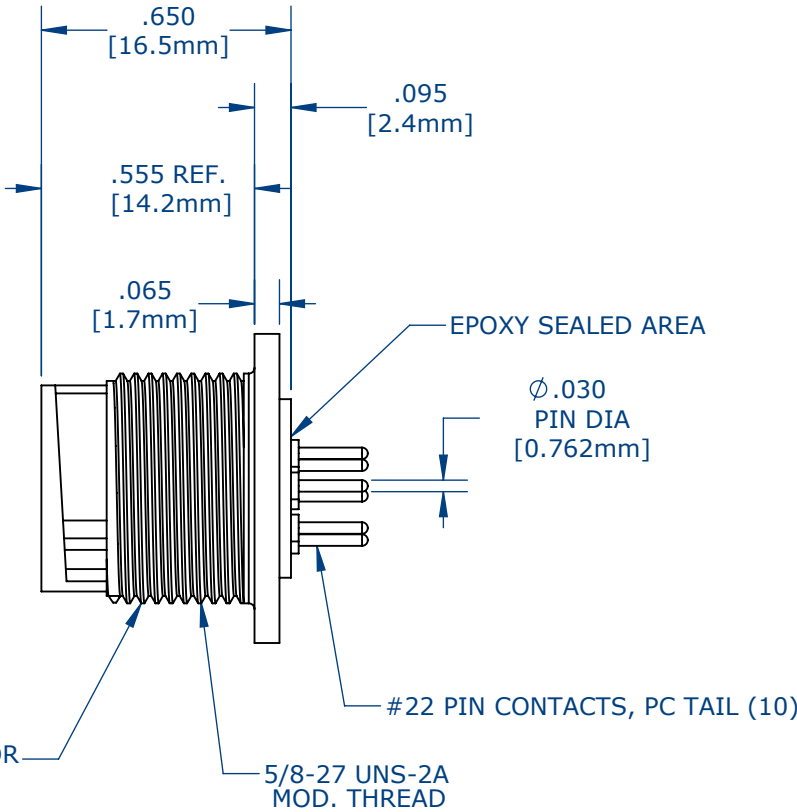


HEX NUT  
.924IN ACROSS EDGE



RUBBER GASKET

PANEL CONNECTOR

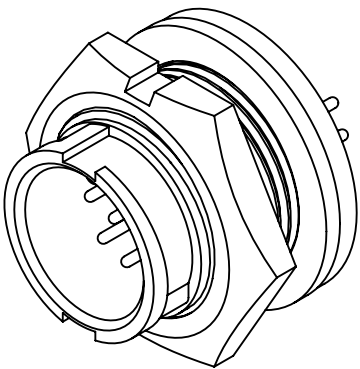


EPOXY SEALED AREA

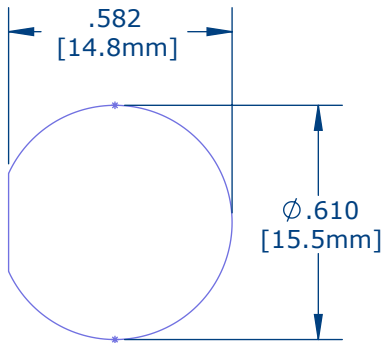
Ø.030  
PIN DIA  
[0.762mm]

#22 PIN CONTACTS, PC TAIL (10)

5/8-27 UNS-2A  
MOD. THREAD

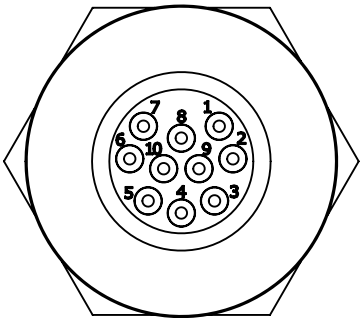


ASSEMBLED VIEW  
FOR CUSTOMER REFERENCE



RECOMMENDED  
PANEL CUT-OUT  
TOLERANCE: ±.003

WIRE VIEW



CUSTOMER APPROVAL

THIS DOCUMENT CONTAINS CONFIDENTIAL INFORMATION PROPRIETARY TO CONXALL CORPORATION. ANY REPRODUCTION, DISCLOSURE, OR USE OF THIS DOCUMENT /INFORMATION IS EXPRESSLY PROHIBITED UNLESS AUTHORIZED IN WRITING BY CONXALL CORPORATION.

APPROVED BY: \_\_\_\_\_

DATE: \_\_\_\_\_

CUSTOMER DRAWING

0A	AM	04/04/16	DRAWINGS CREATED PER PDR# 13015		
REV.	INIT.	DATE	DESCRIPTION		
<div>ALL INFORMATION ILLUSTRATED IS THE PROPERTY OF "CONXALL CORPORATION." UNAUTHORIZED DUPLICATION OR DISTRIBUTION OF THIS DOCUMENT IS PROHIBITED.</div>			ORIG. DRAWN BY: AM	DATE: 04/04/16	<div>CONXall</div> <div>601 E. WILDWOOD VILLA PARK, IL 60181</div>
			CHECKED BY:		
<div>ALL UNITS ARE IN FEET, INCHES, FRACTION OF INCHES AND DECIMALS.</div> <div>UNLESS OTHERWISE SPECIFIED TOLERANCES: 3 PLACE DECIMALS ±.005 ANGLES ±1° FRACTIONS ±1/16</div> <div>▷ = CRITICAL CHARACTERISTIC FLAG PER SPEC. XXXX</div>			APPROVED BY:		TITLE: PANEL CONNECTOR ASSEMBLY (10) #22 PIN CONTACT, PC TAIL MINI-CON-X
			SCALE NTS	SIZE B	SHEET 1 OF 1
FILE:		DIRECTORY: SLW	PART NUMBER: W7881-10PG-3XX	REV 0A	

# Mouser Electronics

Authorized Distributor

Click to View Pricing, Inventory, Delivery & Lifecycle Information:

[Switchcraft:](#)

[W7881-10PG-300](#)