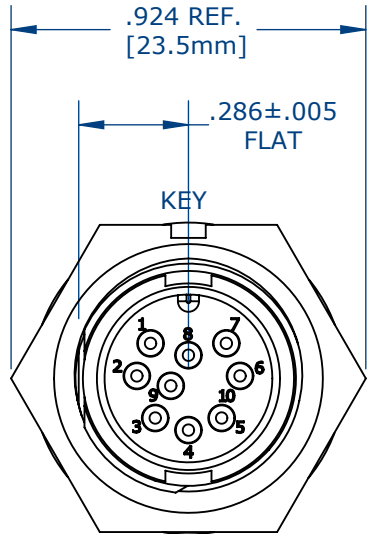


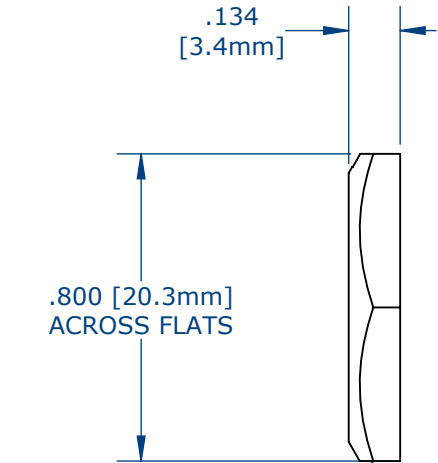
NOTES:

- 1. PC TAIL CONTACTS ARE INSTALLED INTO CONNECTOR (SHOWN)
- 2. ALL DIMENSIONS ARE FOR REFERENCE.

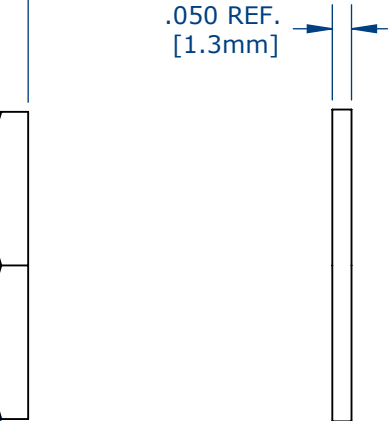
ASS'Y P/N	EPOXY
W7881-9PG-300	NO
W7881-9PG-3ES	YES



FACE VIEW
W7881-9PG-300 SHOWN

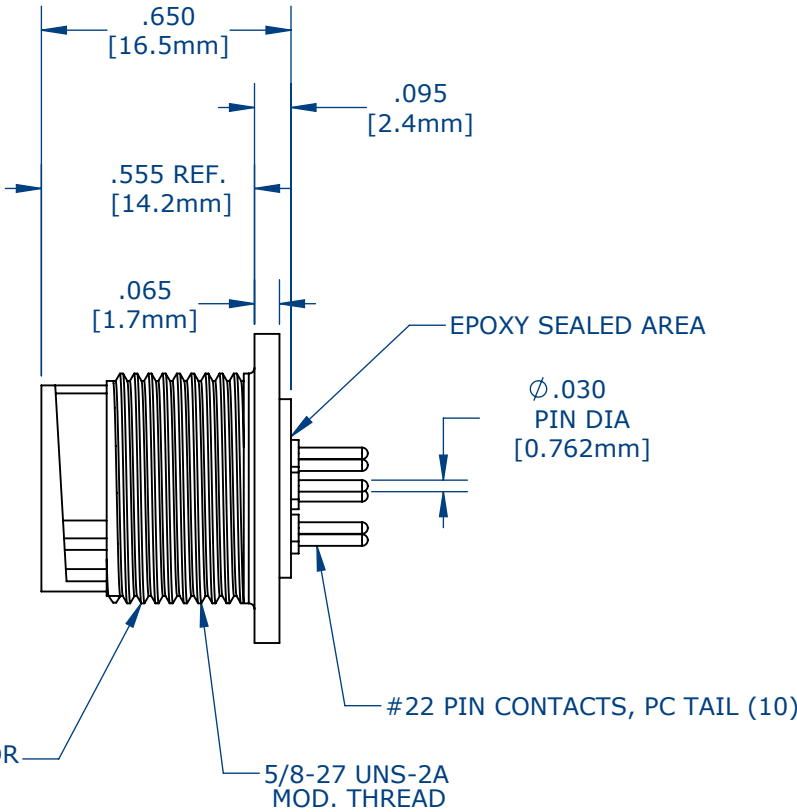


HEX NUT
.924IN ACROSS EDGE

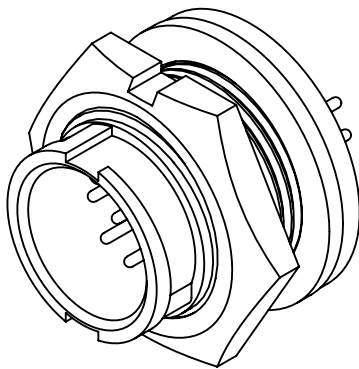
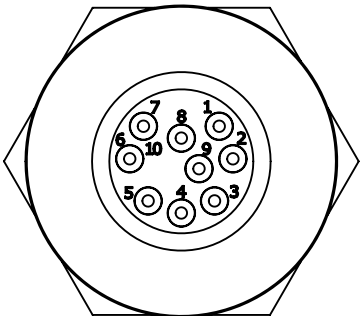


RUBBER GASKET

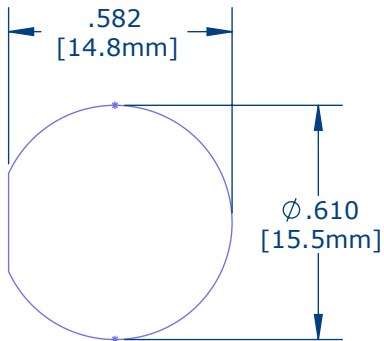
PANEL CONNECTOR



WIRE VIEW



ASSEMBLED VIEW
FOR CUSTOMER REFERENCE



RECOMMENDED
PANEL CUT-OUT
TOLERANCE: ±.003

CUSTOMER APPROVAL

THIS DOCUMENT CONTAINS CONFIDENTIAL INFORMATION PROPRIETARY TO CONXALL CORPORATION. ANY REPRODUCTION, DISCLOSURE, OR USE OF THIS DOCUMENT /INFORMATION IS EXPRESSLY PROHIBITED UNLESS AUTHORIZED IN WRITING BY CONXALL CORPORATION.

APPROVED BY: _____

DATE: _____

CUSTOMER DRAWING

0A	AM	08/10/16	DRAWINGS CREATED PER PDR# 13015		
REV.	INIT.	DATE	DESCRIPTION		
AM		08/10/16	ORIG. DRAWN BY: DATE: 08/10/16		
			CHECKED BY:		
			APPROVED BY:		
			SCALE	SIZE	SHEET
			NTS	B	1 OF 1
			FILE:	DIRECTORY:	PART NUMBER:
				SLW	W7881-9PG-3XX
TITLE: PANEL CONNECTOR ASSEMBLY (9)# 22 PIN CONTACT, PC TAIL MINI-CON-X STANDARD PRODUCT					REV 0A

Mouser Electronics

Authorized Distributor

Click to View Pricing, Inventory, Delivery & Lifecycle Information:

Switchcraft:

[W7881-9PG-300](#) [W7881-9PG-3ES](#)