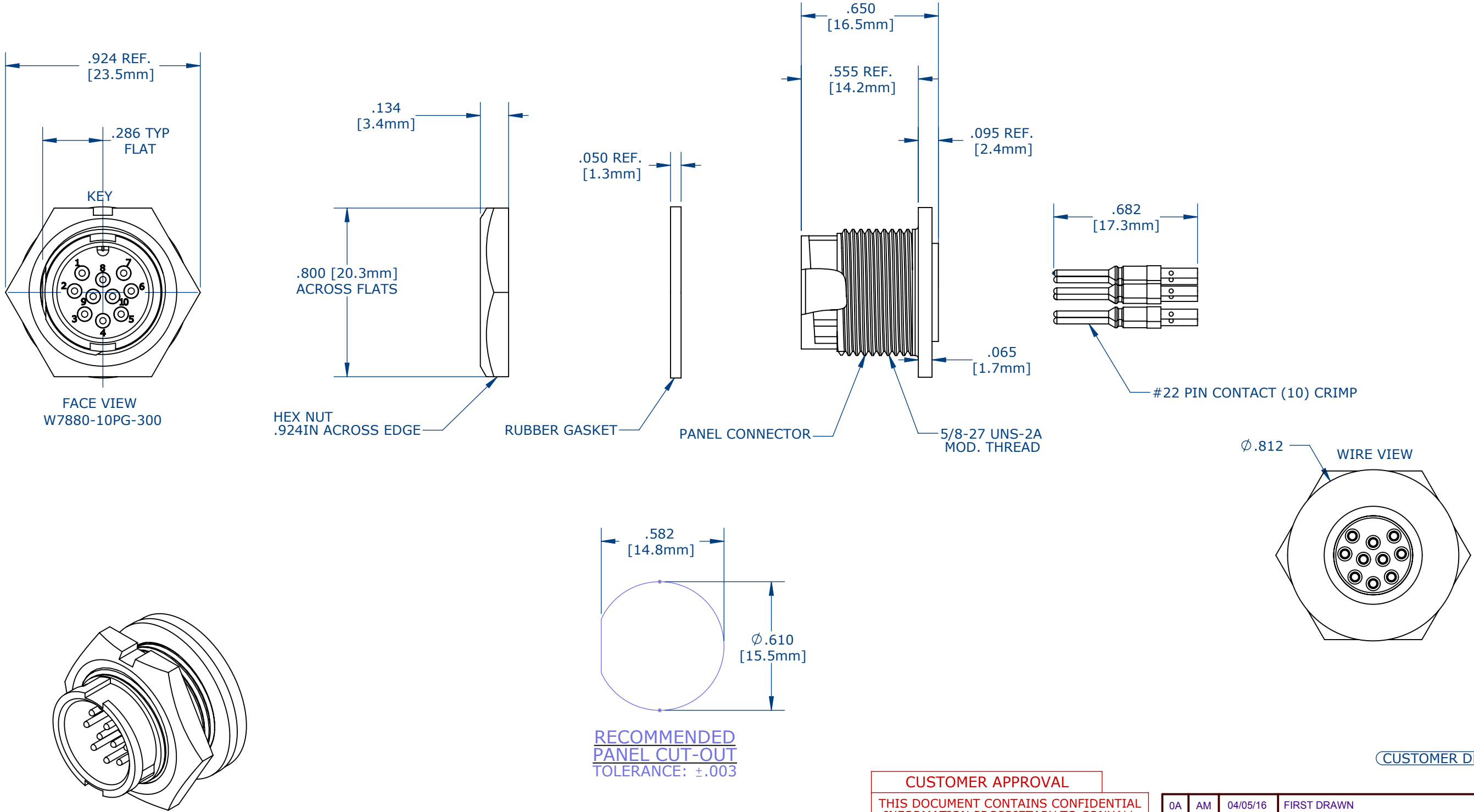


- NOTES:
- 1. PARTS ARE TO BE BULK PACKED.
  - 2. ALL DIMENSIONS ARE REFERENCE ONLY.



CUSTOMER DRAWING

CUSTOMER APPROVAL	
THIS DOCUMENT CONTAINS CONFIDENTIAL INFORMATION PROPRIETARY TO CONXALL CORPORATION. ANY REPRODUCTION, DISCLOSURE, OR USE OF THIS DOCUMENT /INFORMATION IS EXPRESSLY PROHIBITED UNLESS AUTHORIZED IN WRITING BY CONXALL CORPORATION.	
APPROVED BY:	_____
DATE:	_____

0A	AM	04/05/16	FIRST DRAWN
REV.	INIT.	DATE	DESCRIPTION
AM		04/05/16	ORIG. DRAWN BY: DATE: AM 04/05/16
CHECKED BY:			conxall 601 E. WILDWOOD VILLA PARK, IL 60181
APPROVED BY:			
TITLE: PANEL CONNECTOR ASSEMBLY (10) #22 PIN CONTACT, CRIMP MINI-CON-X			CUSTOMER: STANDARD PRODUCT
SCALE NTS SIZE B SHEET 1 OF 1			
FILE:	DIRECTORY:	PART NUMBER: W7880-10PG-300	REV 0A

# Mouser Electronics

Authorized Distributor

Click to View Pricing, Inventory, Delivery & Lifecycle Information:

[Switchcraft:](#)

[W7880-10PG-300](#)