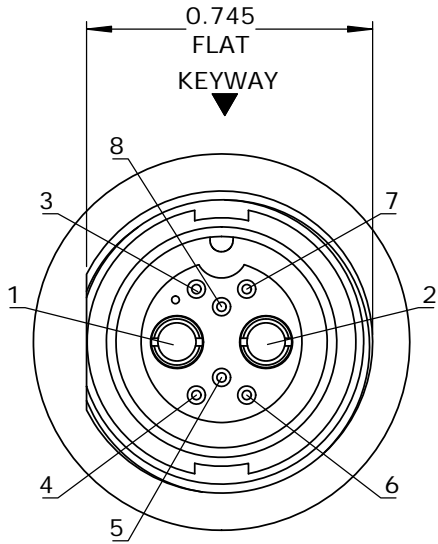
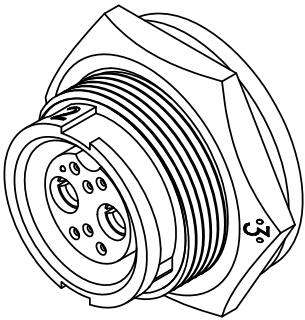
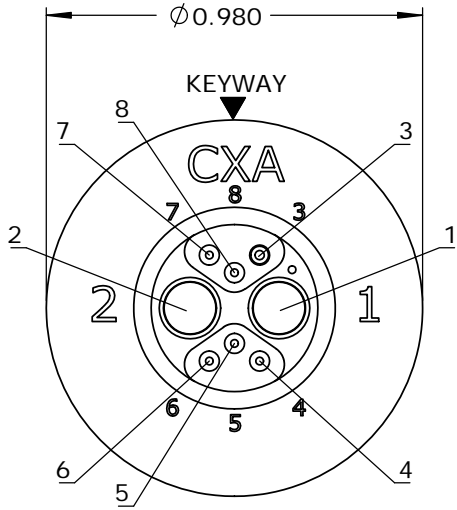
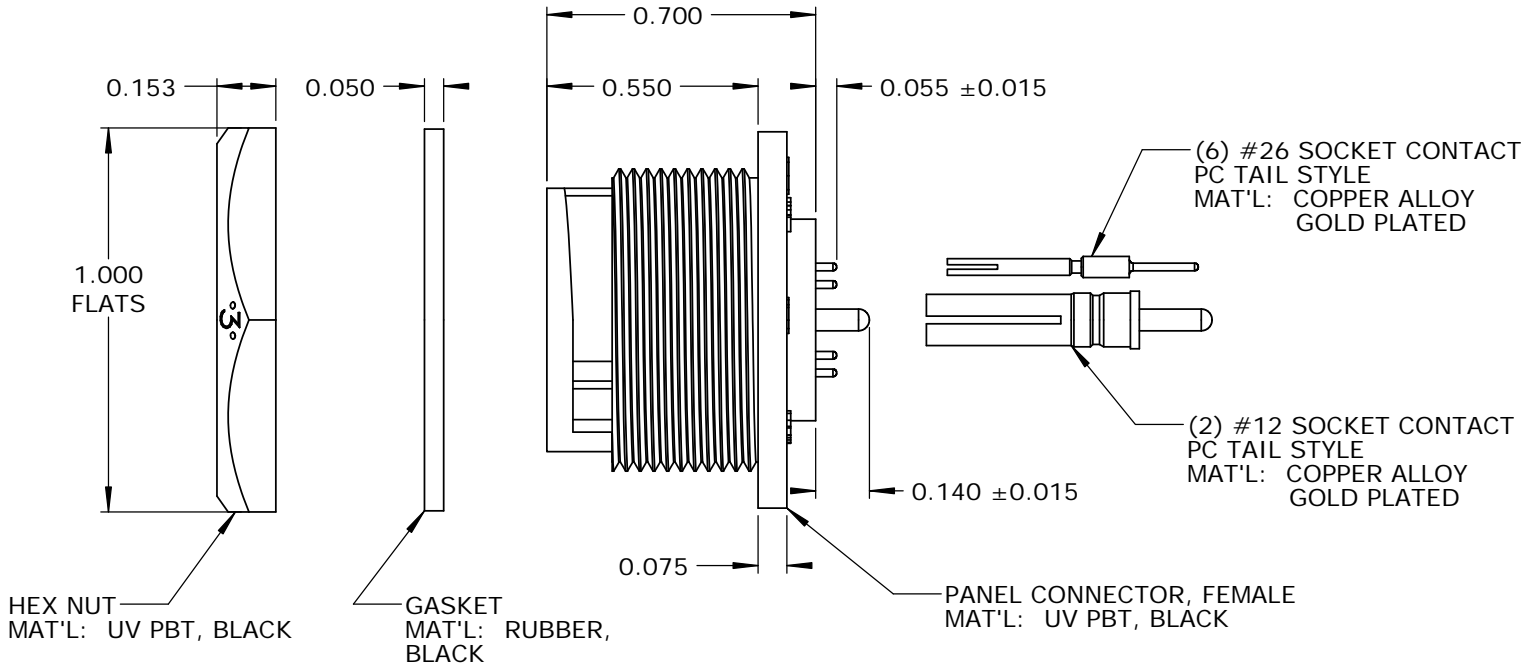


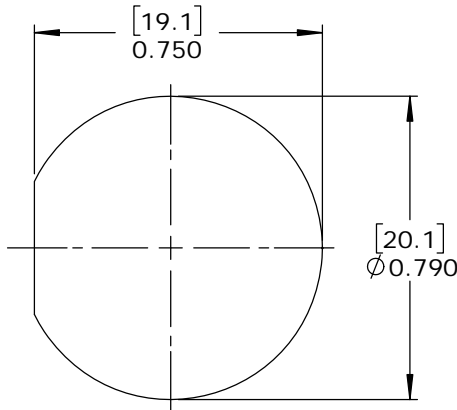
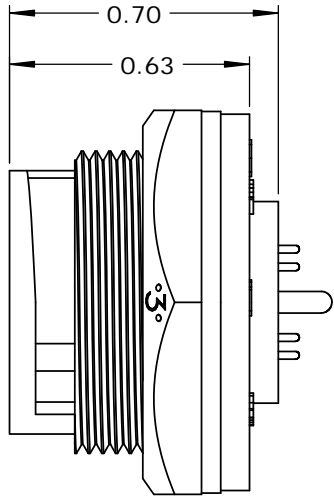
- NOTES:
1. PARTS TO BE BULK PACKED.
  2. PC TAIL CONTACTS ARE PRESSED INTO CONNECTOR.
  3. REAR WELL FILLED WITH BLACK EPOXY.
  4. ALL DIMENSIONS ARE FOR REFERENCE ONLY EXCEPT WHERE NOTED WITH TOLERANCE.



FACE VIEW



WIRE VIEW



RECOMMENDED PANEL CUT-OUT  
TOLERANCE ±.003 [0.08]

CUSTOMER APPROVAL

THIS DOCUMENT CONTAINS CONFIDENTIAL INFORMATION PROPRIETARY TO CONXALL CORPORATION. ANY REPRODUCTION, DISCLOSURE, OR USE OF THIS DOCUMENT /INFORMATION IS EXPRESSLY PROHIBITED UNLESS AUTHORIZED IN WRITING BY CONXALL CORPORATION.

APPROVED BY: \_\_\_\_\_  
DATE: \_\_\_\_\_

RoHS COMPLIANT

A	AB	05-09-19	RELEASE PER DOR 14-6281TC	
REV.	INIT.	DATE	DESCRIPTION	
ALL INFORMATION ILLUSTRATED IS THE PROPERTY OF "CONXALL CORPORATION". UNAUTHORIZED DUPLICATION OR DISTRIBUTION OF THIS DOCUMENT IS PROHIBITED.			ORIG. DRAWN BY: AB	DATE: 07-18-14
			CHECKED BY:	
ALL UNITS ARE IN FEET, INCHES, FRACTION OF INCHES AND DECIMALS.			APPROVED BY:	
			SCALE: NTS	SIZE: B
- CRITICAL CHARACTERISTIC FLAG PER SPEC. XXXX			SHEET: 1 OF 1	
			FILE: SAME AS P/N	DIRECTORY: SLW
			TITLE: PANEL CONNECTOR KIT (2)#12 + (6)#26 SOCKET CONTACTS, PC TAIL MULTI-CON-X, WEATHER RESISTANT STANDARD PRODUCT	
			PART NUMBER: W4B81-8SG-3ES	REV A

# Mouser Electronics

Authorized Distributor

Click to View Pricing, Inventory, Delivery & Lifecycle Information:

[Switchcraft:](#)

[W4B81-8SG-3ES](#)