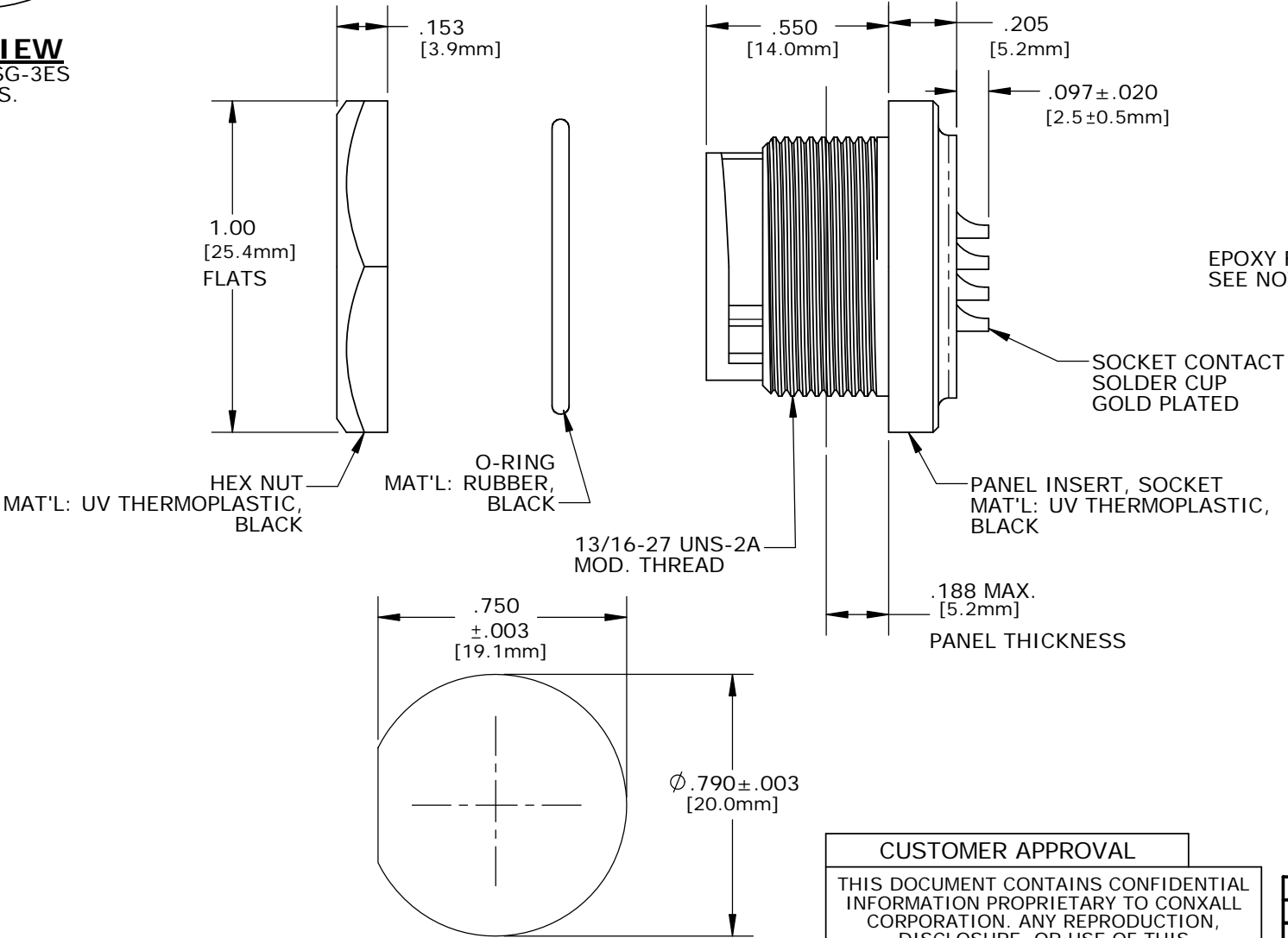
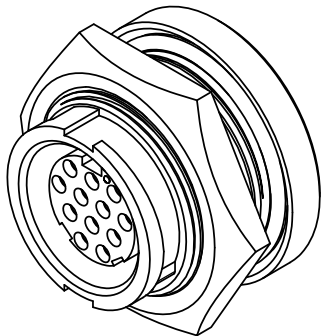
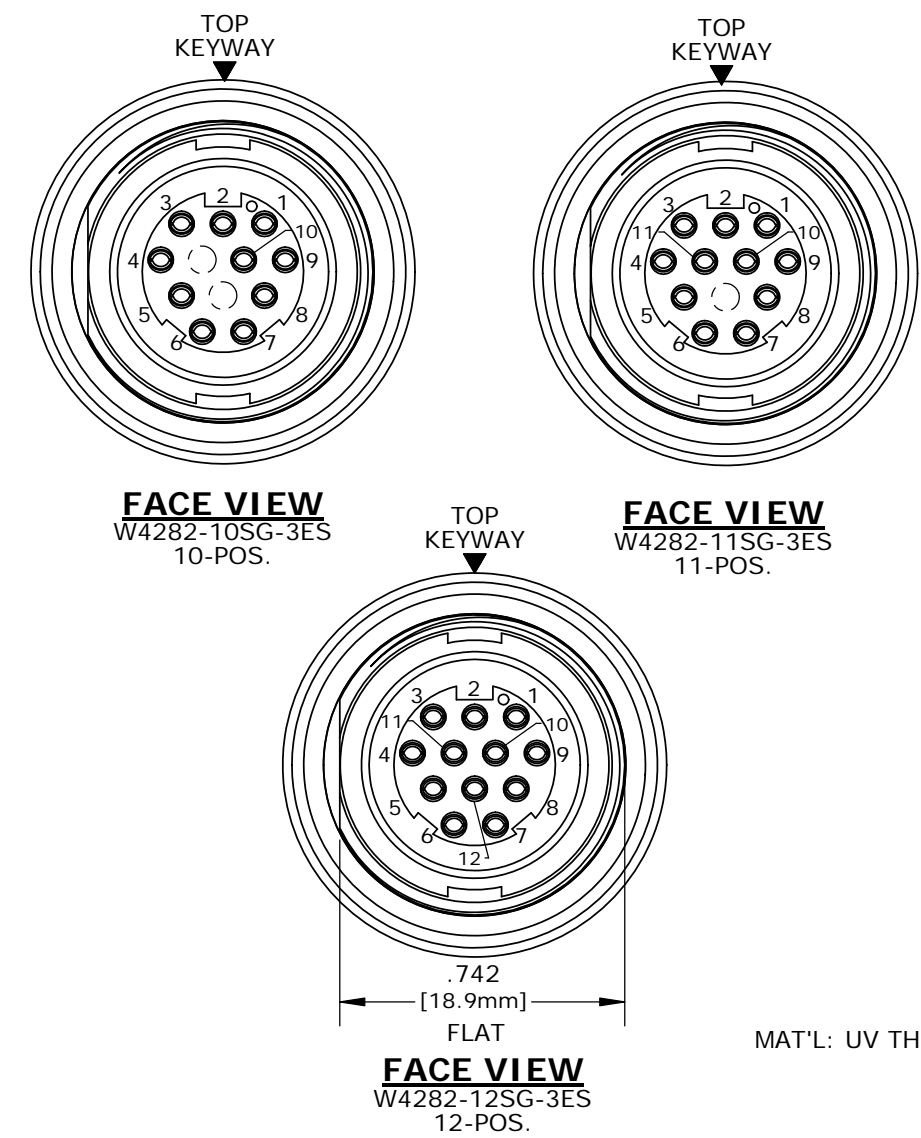


CUSTOMER PRINT

PART NUMBER: W4282-1XSG-3ES

- NOTES:
1. ALL PARTS TO BE BULK PACKED.
 2. CONTACTS ASSEMBLED INTO CONNECTOR. SOLDER CUPS FACING TOP KEYWAY.
 3. BACK WELL FILLED WITH EPOXY.
 4. ALL DIMENSIONS ARE REFERENCE ONLY EXCEPT WHERE NOTED WITH A TOLERANCE. DIMENSIONS IN BRACKETS [] ARE METRIC.

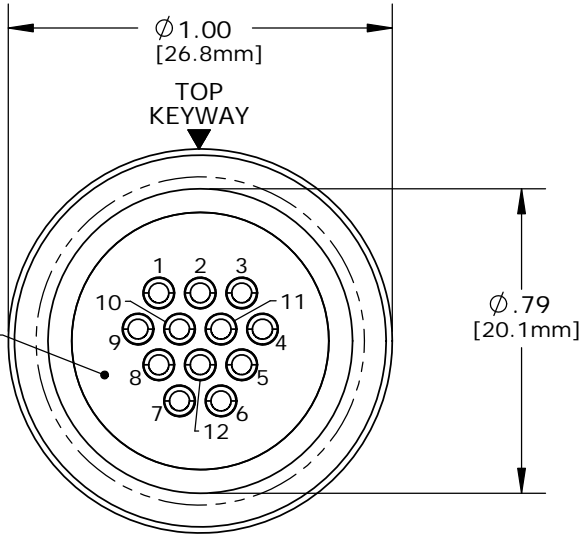


**RECOMMENDED
PANEL CUTOUT**
STANDARD MULTI-CON-X


CUSTOMER APPROVAL	
THIS DOCUMENT CONTAINS CONFIDENTIAL INFORMATION PROPRIETARY TO CONXALL CORPORATION. ANY REPRODUCTION, DISCLOSURE, OR USE OF THIS DOCUMENT /INFORMATION IS EXPRESSLY PROHIBITED UNLESS AUTHORIZED IN WRITING BY CONXALL CORPORATION.	
APPROVED BY:	_____
DATE:	_____

ASS'Y P/N	CONTACTS	HOLE POS. CLOSED
W4282-10SG-3ES	10 - #20	11, 12
W4282-11SG-3ES	11 - #20	12
W4282-12SG-3ES	12 - #20	NONE
W4282-1XSG-3ES		

NO. OF CONTACTS



PC TAIL VIEW
W4282-10SG-3ES - 10-POS. (11&12 CLOSED)
W4282-11SG-3ES - 11-POS. (12 CLOSED)
W4282-12SG-3ES - 12-POS. (ALL OPEN)

A	PAK	09/12/19	DRAWING CREATED AND RELEASED PER DOR 10-2523JS-1		
REV.	INIT.	DATE	DESCRIPTION		
	PAK	10/07/14	ORIG. DRAWN BY: DATE: 10/07/14	 601 E. WILDWOOD VILLA PARK, IL 60181	
			CHECKED BY:		
ALL INFORMATION ILLUSTRATED IS THE PROPERTY OF "CONXALL CORPORATION". UNAUTHORIZED DUPLICATION OR DISTRIBUTION OF THIS DOCUMENT IS PROHIBITED.			APPROVED BY:	TITLE: PANEL SOCKET, W/ EPOXY #20 SOLDER, 12-POS. MULTI-CON-X, E-KEY, WEATHER RESISTANT STANDARD PRODUCT	
ALL UNITS ARE IN FEET, INCHES, FRACTION OF INCHES AND DECIMALS. UNLESS OTHERWISE SPECIFIED TOLERANCES: 3 PLACE DECIMALS ±.005 ANGLES ±1° FRACTIONS ±1/16 ± CRITICAL CHARACTERISTIC FLAG PER SPEC. XXXX			SCALE: NTS	SIZE: B	SHEET: 1 OF 1
			FILE: W4282-1XSG-3ES	DIRECTORY: SLW	PART NUMBER: W4282-1XSG-3ES
					REV A

Mouser Electronics

Authorized Distributor

Click to View Pricing, Inventory, Delivery & Lifecycle Information:

Switchcraft:

[W4282-10SG-3ES](#) [W4282-11SG-3ES](#) [W4282-12SG-3ES](#)