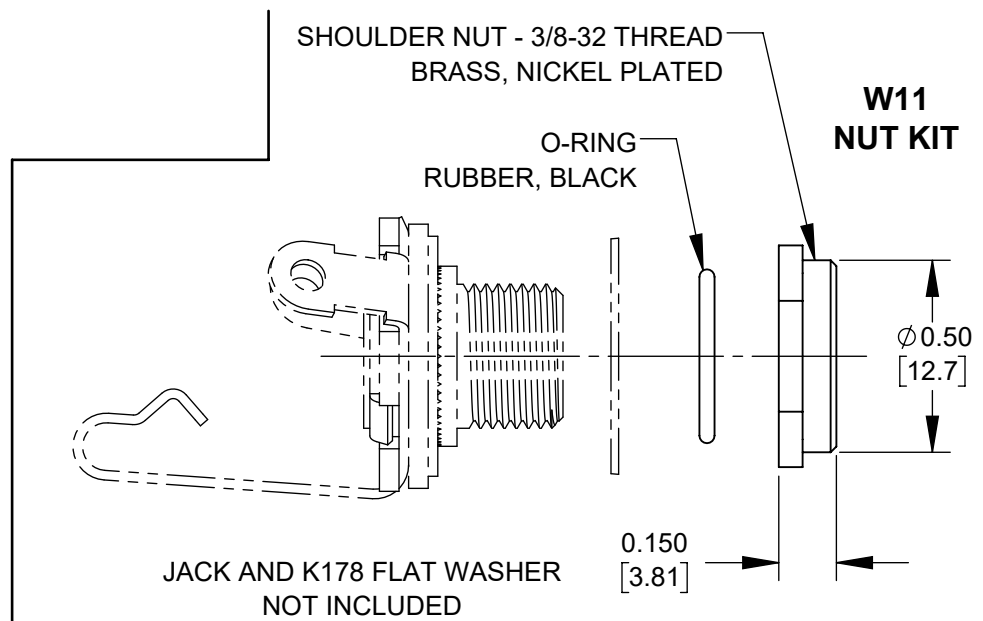
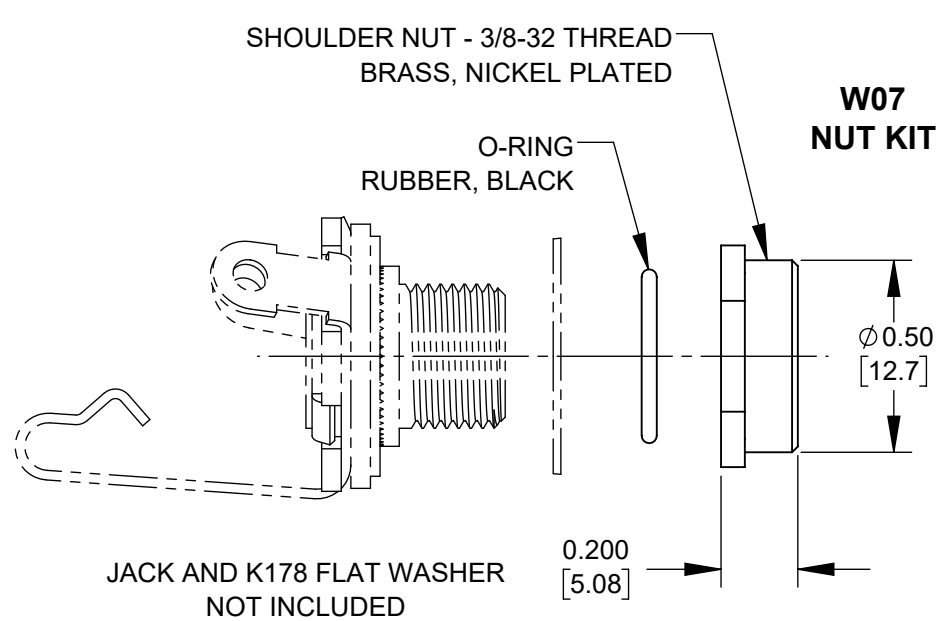




	PANEL THICKNESS AND HARDWARE INSTALLATION															
	W07 - LARGE SHOULDER NUT									W11 - SMALL SHOULDER NUT						
PANEL THICKNESS	0.050	0.055	0.060	0.065	0.070	0.075	0.080	0.085	0.090	0.095	0.100	0.105	0.110	0.115	0.120	0.125
WASHER (K178)	YES	YES	YES	YES	YES	NO	NO	NO	NO	YES	YES	YES	YES	YES	NO	NO



- NOTES:
- JACK SEAL KIT TO BE USED WITH SWITCHCRAFT $\phi 1/4"$ OPEN FRAME JACKS.
EXAMPLES - 11, 12A & 12B JACKS
 - IP66 RATED WHEN MATED WITH 250S15-S28 OR 267S15-S28 SERIES PLUGS.

CUSTOMER DRAWING

					<div>UNLESS OTHERWISE SPECIFIED</div> <div>1. ALL DIMENSIONS IN INCHES [mm]</div> <div>- TWO PLACE DECIMALS ±0.02 [0.5]</div> <div>- THREE PLACE DECIMALS ±0.005 [0.13]</div>	THIS DRAWING DESCRIBES A DESIGN CONSIDERED PROPRIETARY IN NATURE, DEVELOPED AND MANUFACTURED BY SWITCHCRAFT INC. AND IS RELEASED ON A CONFIDENTIAL BASIS FOR IDENTIFICATION PURPOSES ONLY.													
						SIZE	WIDTH		MULT		LBS/M		TEMPER						
						FINISH						MATERIAL							
						SPEC No.						SPEC No.							
						FIRST USED ON				SCALE 2:1		<div>Switchcraft®</div>							
						DATE DRAWN	BY	CHKD		APVD									
A	28492	5/18/22	TJK	TJK		3/23/22	TJK	TJK 3/23/22		TJK 3/23/22		SHEET 1 OF 1							
REV	ECO NUMBER	DATE	BY	APVD		NAME						PART No.		REV					
REVISIONS					DO NOT SCALE DRAWING					SHOULDER NUT KIT FOR Ø 1/4" SEALED JACKS, RoHS						W07-W11		A	

Mouser Electronics

Authorized Distributor

Click to View Pricing, Inventory, Delivery & Lifecycle Information:

Switchcraft:

W07 W11