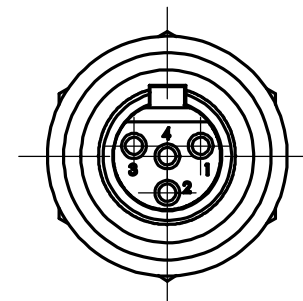
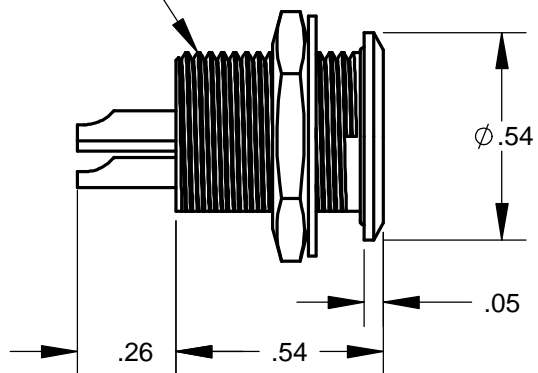


7/16-32 UNS-2A  
THREAD

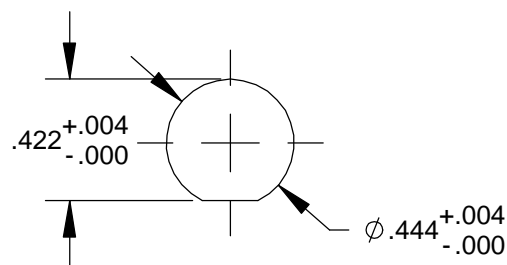
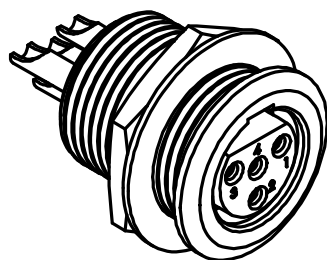


## SPECIFICATIONS

4 contacts, female  
Panel mount  
Locking  
Sealed  
Solder cup termination  
Gold contact finish  
Maximum current 5A  
Dielectric withstanding voltage 1,000 V  
Operating life 5,000 cycles  
Operating temperature -55 to +85°C

## MATERIALS

HOUSING AND MOUNTING HARDWARE:  
copper alloy, nickel plated  
INSULATOR: high grade thermoplastic  
CONTACTS: copper alloy, gold plated



**RECOMMENDED  
PANEL CUT-OUT**

**CUSTOMER DRAWING**

★ STAR SYMBOL DENOTES CRITICAL DIMENSION

THIS DRAWING DESCRIBES A DESIGN CONSIDERED PROPRIETARY IN NATURE, DEVELOPED AND MANUFACTURED BY SWITCHCRAFT INC. AND IS RELEASED ON A CONFIDENTIAL BASIS FOR IDENTIFICATION PURPOSES ONLY.

UNLESS OTHERWISE SPECIFIED

- ALL DIMENSIONS IN INCHES
  - TWO PLACE DECIMALS  $\pm 0.01$
  - THREE PLACE DECIMALS  $\pm 0.005$
  - ANGLES  $\pm 1^\circ$
  - ALL DIA. CONCENTRIC WITHIN 0.005 T.I.R.
- FEATURES ON THE SAME CENTERLINE MUST BE ALIGNED WITHIN  $\pm 0.002$
- REMOVE ALL BURRS

SIZE		WIDTH		MULT		LBS/M		TEMPER		
FINISH					MATERIAL					
SPEC No.					SPEC No.					
FIRST USED ON			SCALE		Switchcraft®					
			2:1							
DATE DRAWN		BY	CHKD	APVD						
9-15-00		MA	MA	MA						
			9-15-00	9-15-00		SHEET 1 OF 1				
NAME RECEPTACLE CONNECTOR					PART No.					REV
4 POS, SKT. CONTACTS, SEALED					TRGS4F					A

REV	ECO NUMBER	DATE	BY	APVD
A	24810	9-16-04	JL	MA
REVISIONS				

DO NOT SCALE DRAWING

SolidWorks CAD File



# Mouser Electronics

Authorized Distributor

Click to View Pricing, Inventory, Delivery & Lifecycle Information:

[Switchcraft:](#)

[TRGS4F](#)