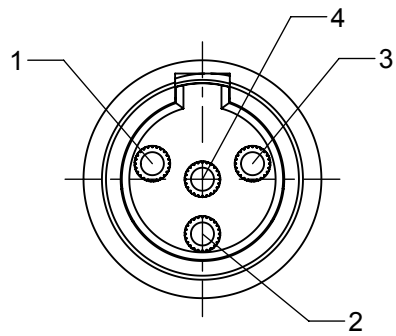
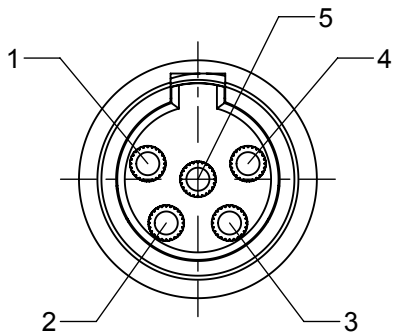


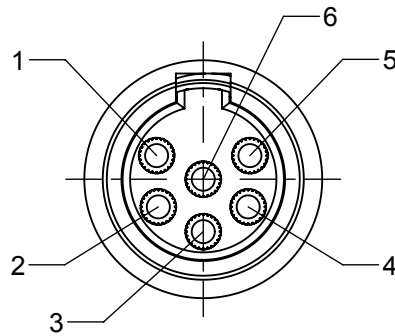
3 PIN



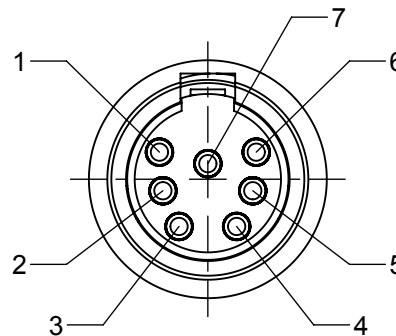
4 PIN



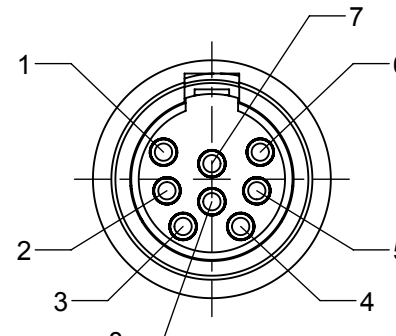
5 PIN



6 PIN

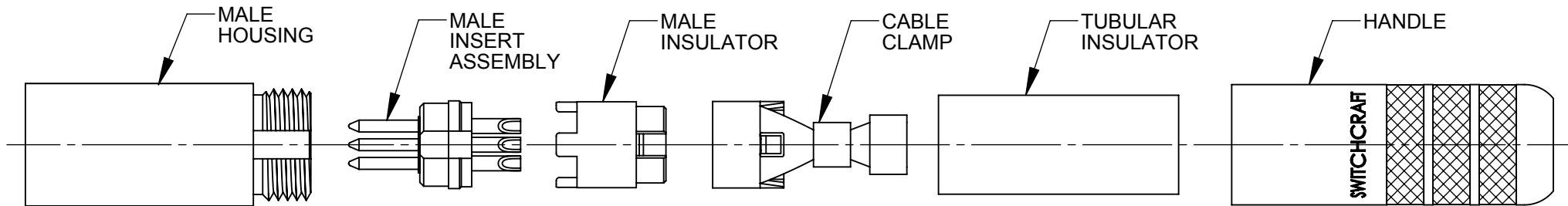


7 PIN



8 PIN

AS VIEWED FROM FRONT MATING VIEW



TA

M

SH

TINI QG  
CORD PLUG

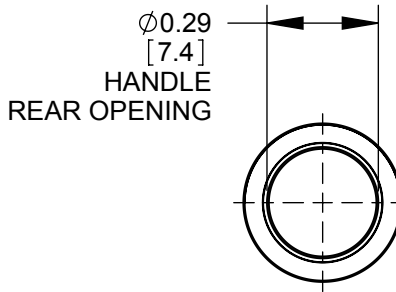
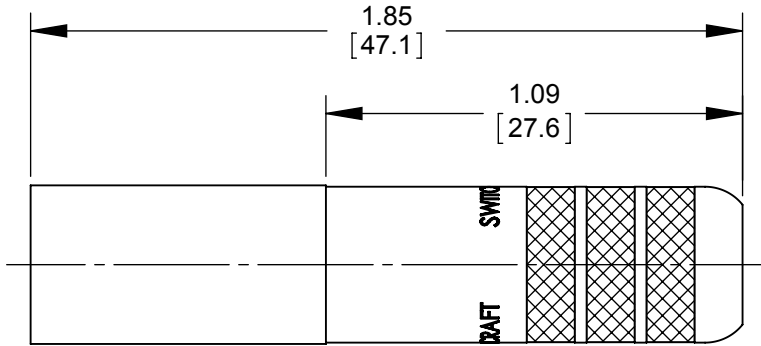
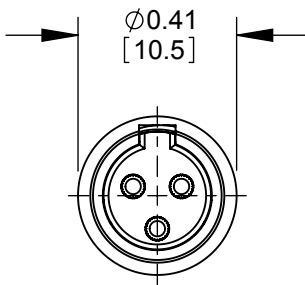
SHIELDED  
HANDLE

NUMBER OF CONTACTS

- 3 - 3 CONTACTS
- 4 - 4 CONTACTS
- 5 - 5 CONTACTS
- 6 - 6 CONTACTS
- 7 - 7 CONTACTS
- 8 - 8 CONTACTS

CONTACT PLATING  
**BLANK** - SILVER (STANDARD)  
**AU** - GOLD

MALE



TA3MSH SHOWN

CUSTOMER DRAWING

- NOTES:
- MATERIALS:  
HOUSING - COPPER ALLOY, NICKEL PLATED  
CONTACTS - COPPER ALLOY, SILVER OR GOLD PLATED  
INSERT - THERMOPLASTIC, DARK BROWN  
INSULATOR - THERMOPLASTIC, DARK BROWN  
CABLE CLAMP/GROUND TERMINAL - STEEL, ELECTRO-TIN PLATED  
TUBULAR INSULATOR - FISH PAPER  
HANDLE - COPPER ALLOY, NICKEL PLATED
  - THIS PRODUCT IS RoHS COMPLIANT.

						THIS DRAWING DESCRIBES A DESIGN CONSIDERED PROPRIETARY IN NATURE, DEVELOPED AND MANUFACTURED BY SWITCHCRAFT INC. AND IS RELEASED ON A CONFIDENTIAL BASIS FOR IDENTIFICATION PURPOSES ONLY.													
						UNLESS OTHERWISE SPECIFIED  1. ALL DIMENSIONS IN INCHES [mm]  - TWO PLACE DECIMALS    ±0.02 [0.5]  - THREE PLACE DECIMALS   ±0.005 [0.13]	SIZE		WIDTH		MULT		LBS/M		TEMPER				
					FINISH								MATERIAL						
					SPEC No.								SPEC No.						
					FIRST USED ON				SCALE 2:1				Switchcraft®						
					DATE DRAWN		BY	CHKD		APVD									
					07/15/09		BS	TJK		TJK									
A	27648	01/28/16	PC	TJK					02/04/16		02/04/16		SHEET    1       OF    1						
REV	ECO NUMBER	DATE	BY	APVD					NAME		MALE TINI QG SHIELDED, RoHS				PART No. TA_MSH SERIES		REV A		
REVISIONS					DO NOT SCALE DRAWING														

# Mouser Electronics

Authorized Distributor

Click to View Pricing, Inventory, Delivery & Lifecycle Information:

Switchcraft:

[TA3MSH](#) [TA4MSH](#) [TA5MSH](#) [TA6MSH](#) [TA7MSH](#) [TA8MSH](#)