

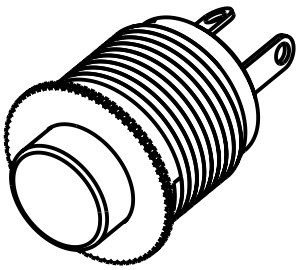
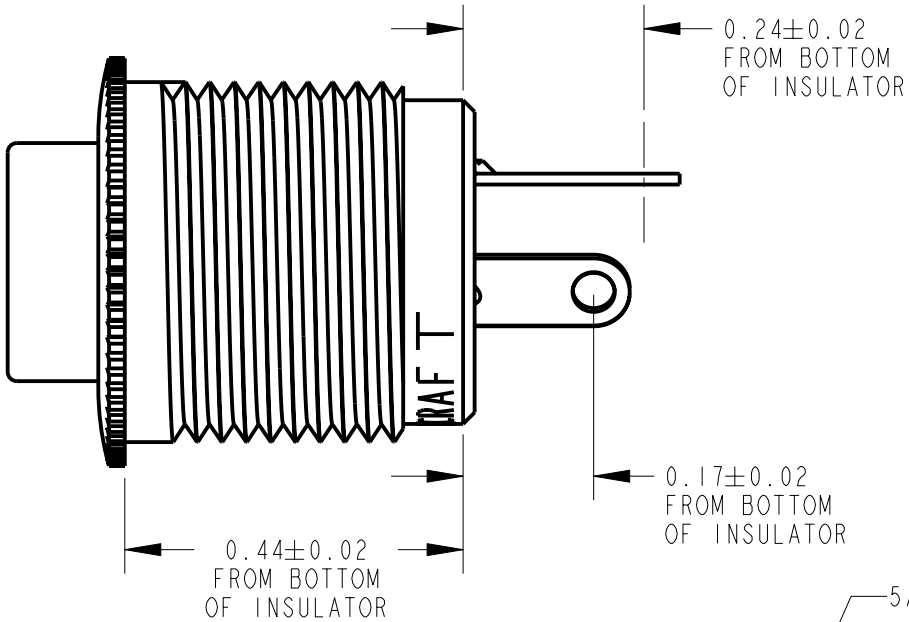
| PART NUMBER | BUTTON COLOR | SCHEMATIC |
|-------------|--------------|-----------|
| 10SI047X | RED | I-C |
| 10SI048X | BLACK | I-C |

NOTES:

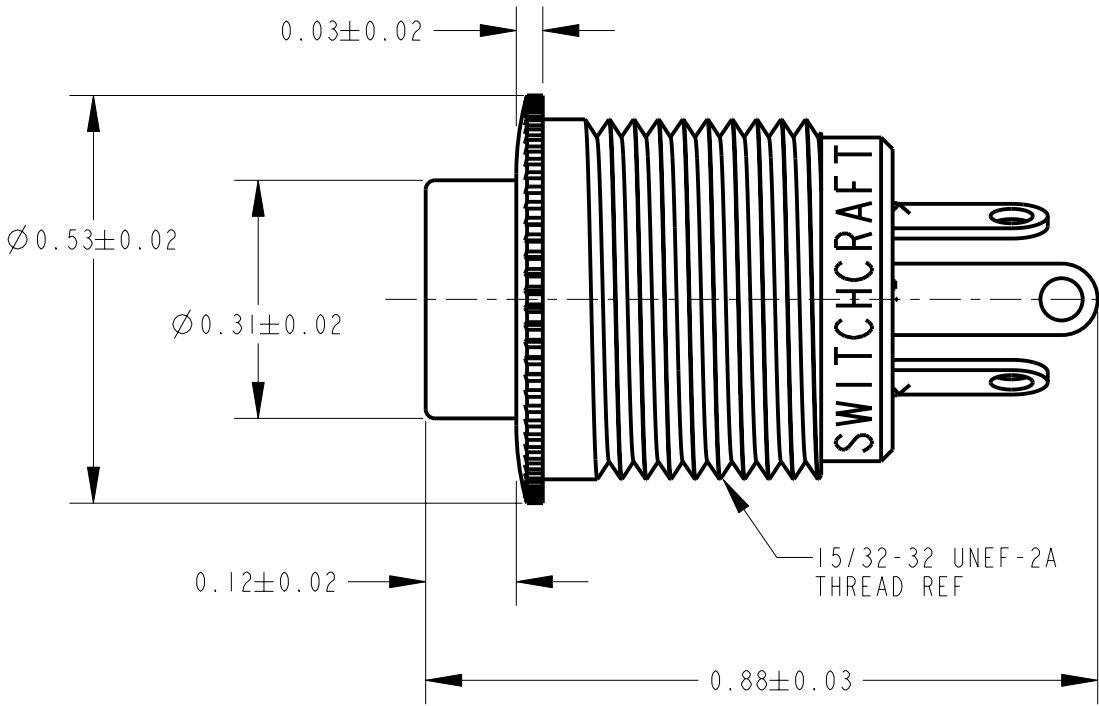
- HEX NUT AND LOCKWASHER ARE SHIPPED UNASSEMBLED.
- ALL DIMENSIONS ARE REFERENCE.
- THESE PRODUCTS ARE RoHS COMPLIANT.

SPECIFICATIONS:

- PUSHBUTTON - PLASTIC, SEE TABLE FOR COLOR
- HOUSING - BRASS, NICKEL PLATED
- TERMINALS - BRASS, GOLD PLATED
- CONTACTORS - BRASS, GOLD PLATED
- INSULATORS - PHENOLIC
- SPRING - SILVER PLATED
- HEX NUT - BRASS, NICKEL PLATED
- WASHER - STEEL, NICKEL PLATED

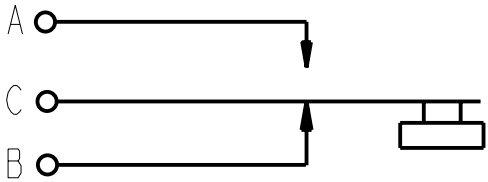
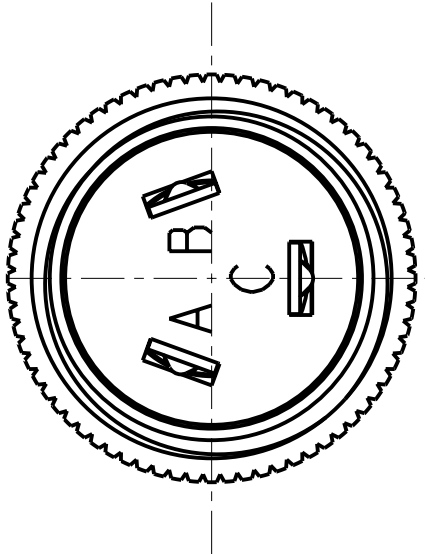


SCALE 2:1



5/8 O.D. INT. LOCKWASHER

15/32-32 HEX NUT 1/16 THICK



SCHEMATIC
I-C

CUSTOMER DRAWING

| | | | | | | | | | | |
|-----------|------------|---------|-----|------|---|--|-------|----------------|----------------------|---------------------|
| | | | | | ★ STAR SYMBOL DENOTES CRITICAL DIMENSION | THIS DRAWING DESCRIBES A DESIGN CONSIDERED PROPRIETARY IN NATURE, DEVELOPED AND MANUFACTURED BY SWITCHCRAFT INC. AND IS RELEASED ON A CONFIDENTIAL BASIS FOR IDENTIFICATION PURPOSES ONLY. | | | | |
| | | | | | UNLESS OTHERWISE SPECIFIED | SIZE | WIDTH | MULT | LBS/M | TEMPER |
| | | | | | 1. ALL DIMENSIONS IN INCHES - TWO PLACE DECIMALS ±0.01 - THREE PLACE DECIMALS ±0.005 - ANGLES ±1° - ALL DIA. CONCENTRIC WITHIN 0.005 T.I.R. | FINISH SPEC No. | | | MATERIAL SPEC No. | |
| | | | | | 2. FEATURES ON THE SAME CENTERLINE MUST BE ALIGNED WITHIN ±0.002 | FIRST USED ON | | SCALE 4:1 | | Switchcraft® |
| | | | | | 3. REMOVE ALL BURRS | DATE DRAWN | BY | CHKD | APVD | |
| A | ECO #26164 | 11-1-07 | TJK | TJK | | 1-Nov-07 | TJK | TJK 11-1-07 | TJK 11-1-07 | SHEET 1 OF 1 |
| REV | ECO NUMBER | DATE | BY | APVD | | NAME | | | PART No. | |
| REVISIONS | | | | | DO NOT SCALE DRAWING | BUTTON SWITCH, RoHS | | | 10SI047X 10SI048X | REV A |

Mouser Electronics

Authorized Distributor

Click to View Pricing, Inventory, Delivery & Lifecycle Information:

[Switchcraft:](#)

[10S1048X](#)