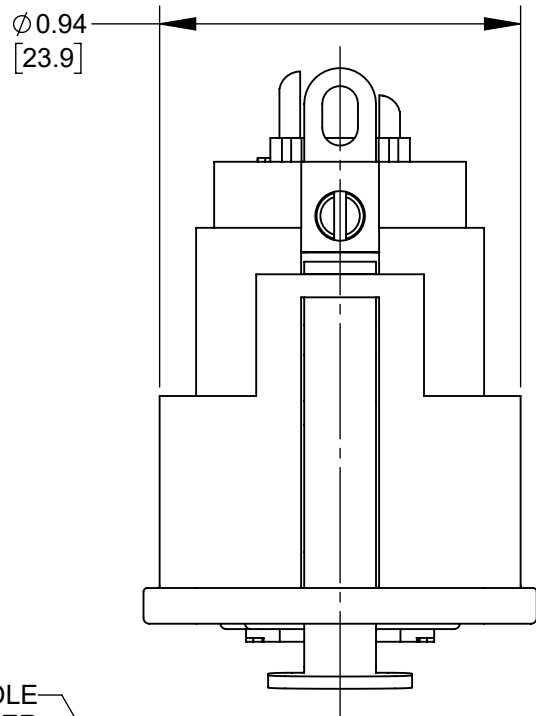
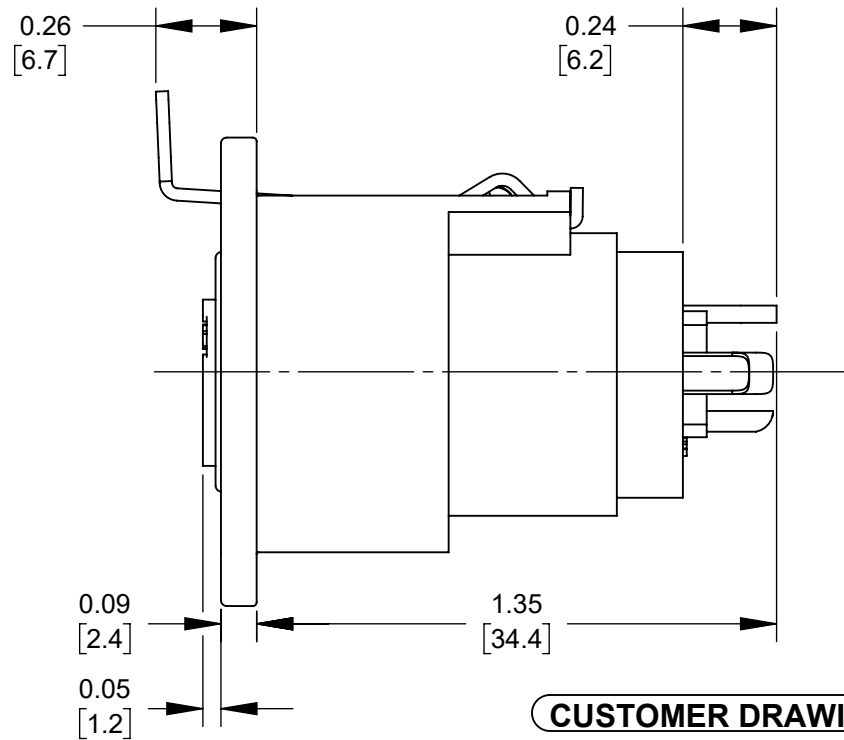
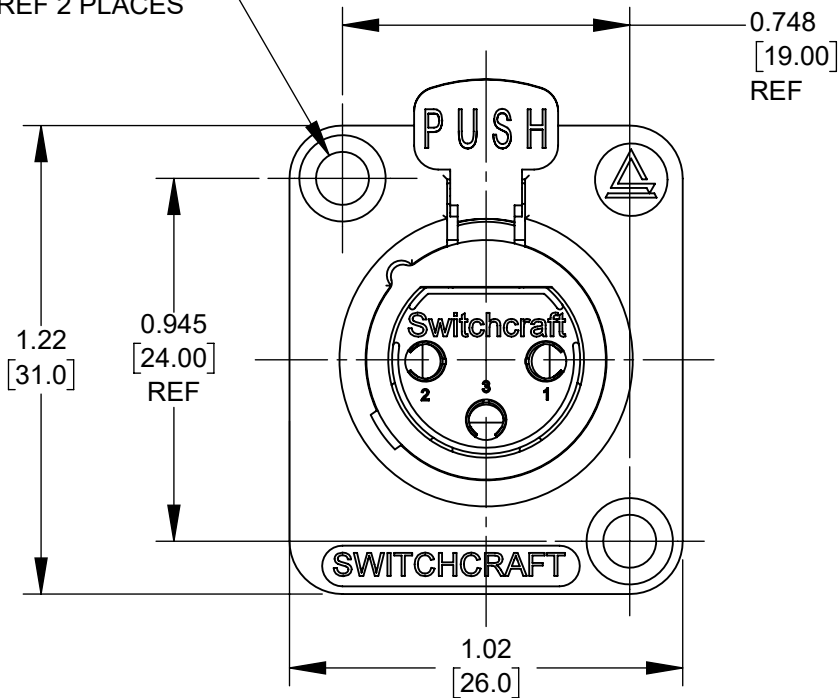


RECOMMENDED
PANEL CUT - OUT



Ø0.140 [3.56] HOLE
Ø0.225 [5.72] X 82° CHAMFER
REF 2 PLACES



CUSTOMER DRAWING

NOTES:

1. MATERIALS:

HOUSING - ZINC ALLOY, NICKEL PLATED
SHELL - STAINLESS STEEL
INSERT SCREW - STAINLESS STEEL
INSERTS - THERMOPLASTIC, BLACK
SOLDER TERMINAL - COPPER ALLOY, TIN PLATED
LATCH BUTTON - ZINC ALLOY, NICKEL PLATED
LATCH SPRING - STAINLESS STEEL
CONTACT SOCKETS - COPPER ALLOY, SILVER PLATED
RELEASE LEVER - STEEL, NICKEL PLATED

2. THIS PRODUCT IS RoHS COMPLIANT.

						THIS DRAWING DESCRIBES A DESIGN CONSIDERED PROPRIETARY IN NATURE, DEVELOPED AND MANUFACTURED BY SWITCHCRAFT INC. AND IS RELEASED ON A CONFIDENTIAL BASIS FOR IDENTIFICATION PURPOSES ONLY.														
					<div>UNLESS OTHERWISE SPECIFIED</div> <div>1. ALL DIMENSIONS IN INCHES [mm]</div> <div>- TWO PLACE DECIMALS ±0.02 [0.5]</div> <div>- THREE PLACE DECIMALS ±0.005 [0.13]</div>	SIZE		WIDTH		MULT		LBS/M		TEMPER						
						FINISH					MATERIAL									
						SPEC No.					SPEC No.									
						FIRST USED ON			SCALE		<div>Switchcraft®</div>									
								2:1												
B	28470	02/16/22	PC	TJK		DATE DRAWN	BY	CHKD	APVD											
A	28368	03/11/21	PC	TJK	02-28-21	FM	FM	TJK												
							2/28/21	3/10/21												
REV	ECO NUMBER	DATE	BY	APVD	NAME DE3F XLR W/ NICKEL					PART No.					REV					
REVISIONS					DO NOT SCALE DRAWING					HOUSING, BLACK INSERT, RoHS					5C3338					B

Mouser Electronics

Authorized Distributor

Click to View Pricing, Inventory, Delivery & Lifecycle Information:

[Switchcraft:](#)

[5C3338](#)