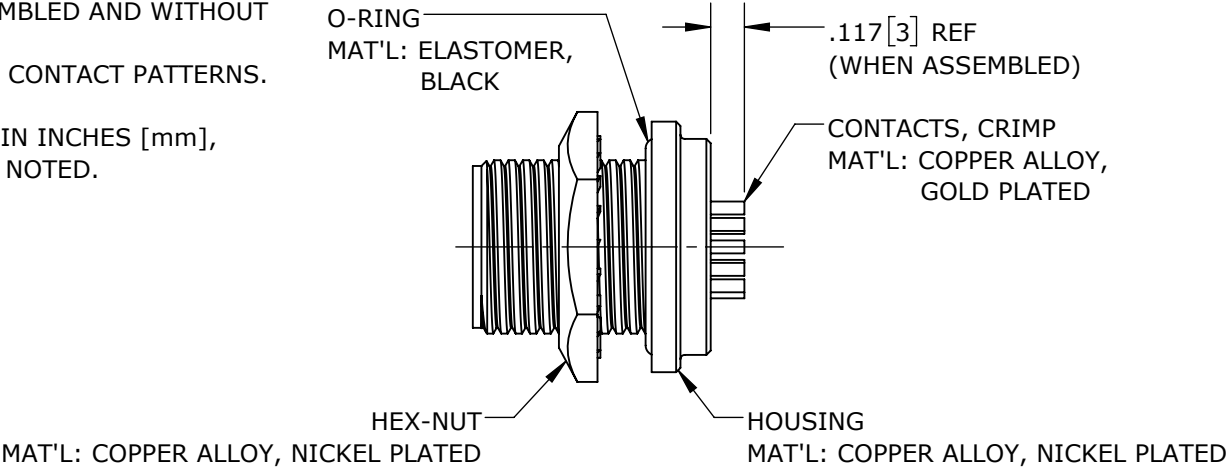
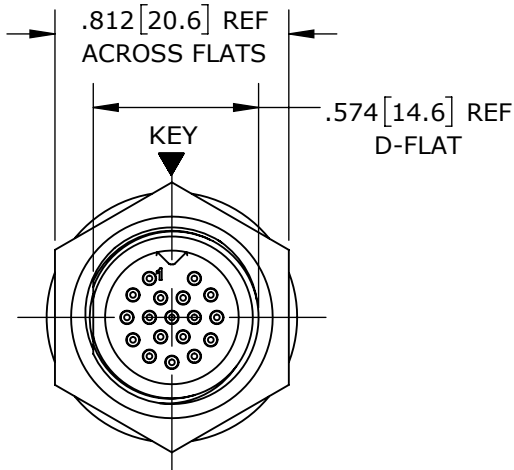


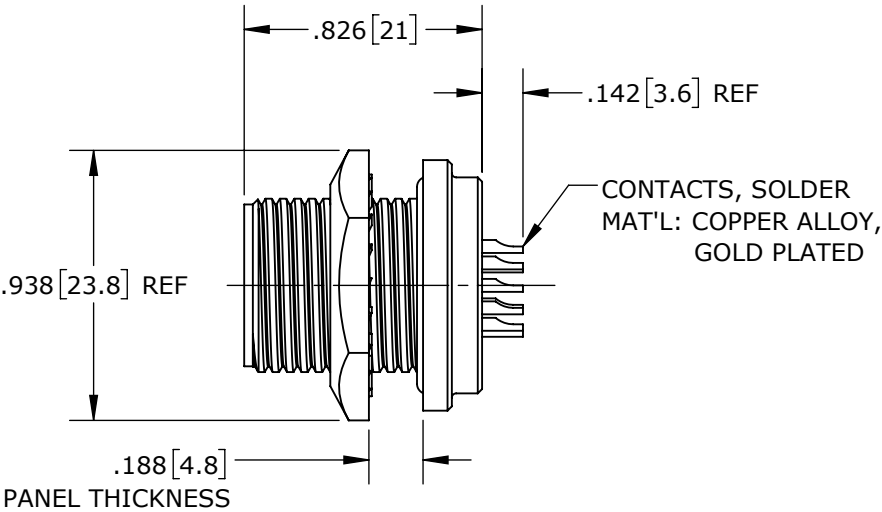
- NOTES:
1. CRIMP CONTACTS SUPPLIED UNASSEMBLED AND WITHOUT EPOXY BACKING.
 2. REFER TO DRAWING HPSFMISTD FOR CONTACT PATTERNS.
 3. HEX-NUT TORQUE: 10-12 IN-LB.
 4. DIMENSIONS ARE REFERENCE ONLY, IN INCHES [mm], WITHIN ±0.015 UNLESS OTHERWISE NOTED.



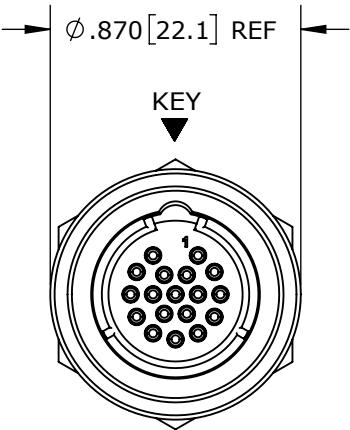
CRIMP CONTACTS
SF7980-18PG-300 SHOWN



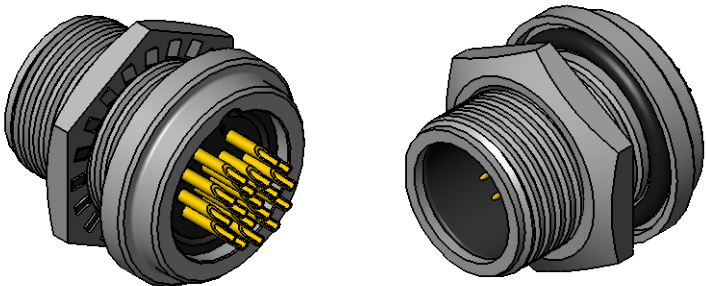
FACE VIEW
SF7982-18PG-300 SHOWN



SOLDER CONTACTS
SF7982-18PG-300 SHOWN



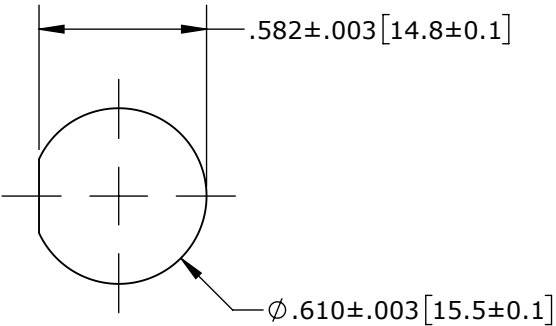
WIRING END
SF7982-18PG-300 SHOWN



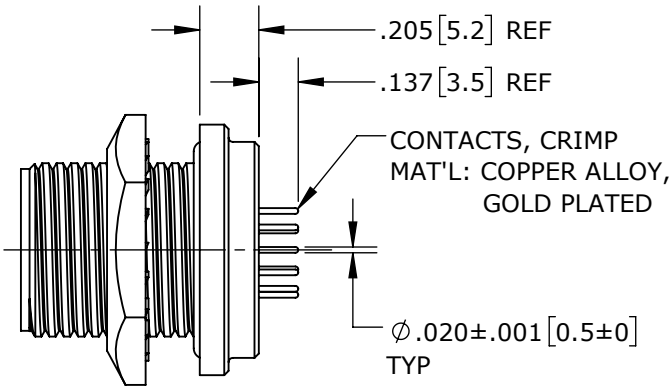
PANEL-MOUNT CONNECTOR PART NUMBERS:

S F 7 9 8 X - X P G - 3 X X

- EPOXY BACKING:
3ES = WITH EPOXY
300 = WITHOUT EPOXY
- # OF CONTACTS: 9 - 18
- CONTACTS STYLE:
0 = CRIMP
2 = SOLDER
4 = PC TAIL



RECOMMENDED PANEL CUT-OUT




PC TAIL CONTACTS
SF7984-18PG-3ES SHOWN

CUSTOMER APPROVAL

THIS DOCUMENT CONTAINS CONFIDENTIAL INFORMATION PROPRIETARY TO CONXALL CORPORATION. ANY REPRODUCTION, DISCLOSURE, OR USE OF THIS DOCUMENT /INFORMATION IS EXPRESSLY PROHIBITED UNLESS AUTHORIZED IN WRITING BY CONXALL CORPORATION.

APPROVED BY: _____
DATE: _____

RoHS COMPLIANT

0A	PNK	1-30-18	DRAWING CREATED PER PDR17011		
REV.	INIT.	DATE	DESCRIPTION		
ALL INFORMATION ILLUSTRATED IS THE PROPERTY OF "CONXALL CORPORATION." UNAUTHORIZED DUPLICATION OR DISTRIBUTION OF THIS DOCUMENT IS PROHIBITED.			ORIG. DRAWN BY: PNK	DATE: 1-30-18	 601 E. WILDWOOD VILLA PARK, IL 60181
			CHECKED BY:		
ALL UNITS ARE IN FEET, INCHES, FRACTION OF INCHES AND DECIMALS. UNLESS OTHERWISE SPECIFIED TOLERANCES: 3 PLACE DECIMALS ±.005 ANGLES ±1° FRACTIONS ±1/16			APPROVED BY:		TITLE: PANEL-MOUNT CONNECTOR (9-18) #26 PIN CONTACTS SHIELDED MINI-CON-X STANDARD PRODUCT
			SCALE NTS	SIZE B	
▽	= CRITICAL CHARACTERISTIC FLAG PER SPEC. XXXX		FILE: SF798X-XPG-3XX_CD	DIRECTORY: SLW	PART NUMBER: SF798X-XPG-3XX
			REV 0A		

Mouser Electronics

Authorized Distributor

Click to View Pricing, Inventory, Delivery & Lifecycle Information:

Switchcraft:

[SF7982-18PG-300](#) [SF7984-18PG-3ES](#) [SF7980-18PG-300](#)