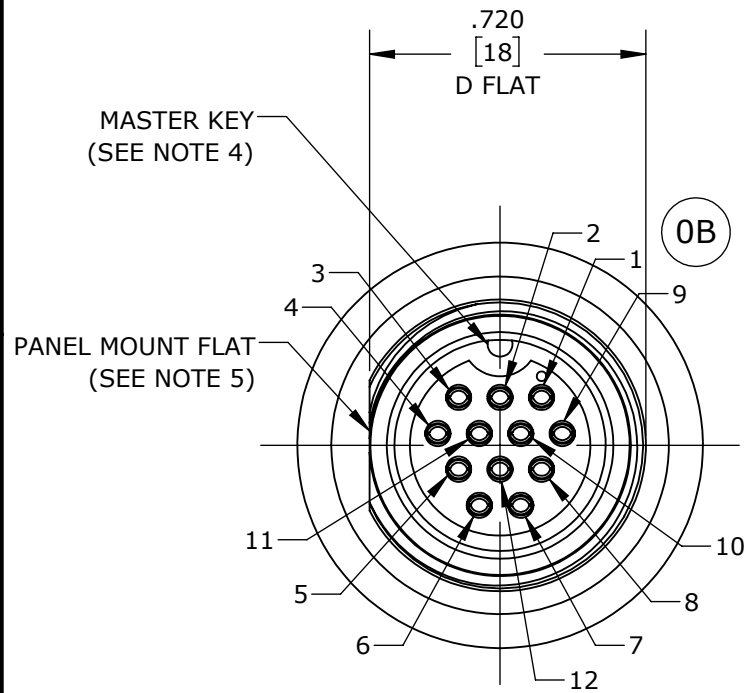


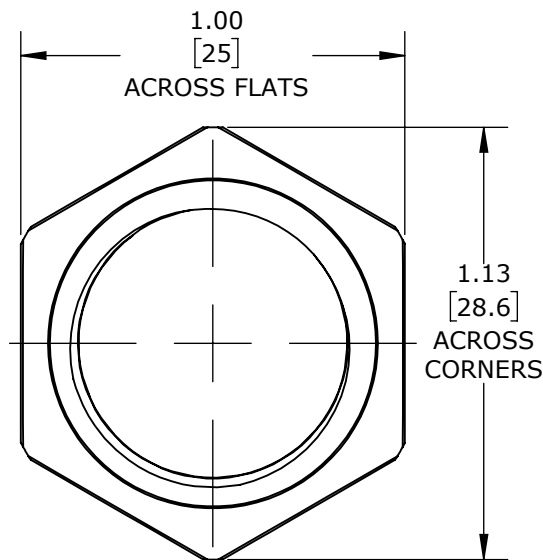
|              |              |       |    |              |       |
|--------------|--------------|-------|----|--------------|-------|
| MFG.<br>ENG. | APPROVED BY: | DATE: | QA | APPROVED BY: | DATE: |
|              |              |       |    |              |       |

NOTES:

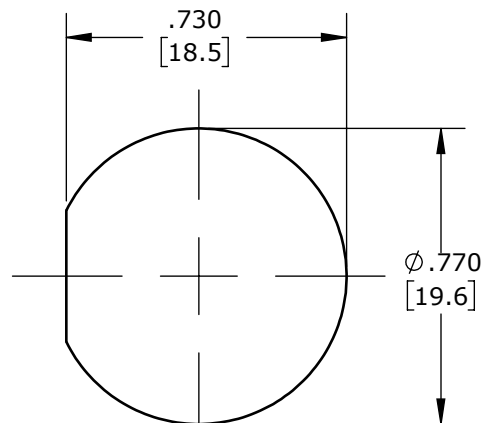
1. FINISHED CONNECTOR ASSEMBLIES ARE PACKED INTO A PARTITION BOX, 25 PIECES PER BOX. BOX IS LABELED WITH CONXALL PART NUMBER AND DATE CODE.
2. HEX NUT IS BULK PACKED IN POLY BAG. O-RING AND PROTECTIVE CAP ARE ASSEMBLED ONTO THE CONNECTOR.
3. TERMINATING END OF CONNECTOR IS FILLED WITH BLACK EPOXY.
4. MASTER KEY IS AT 12 O'CLOCK.
5. PANEL MOUNT FLAT IS AT 9 O'CLOCK.
6. MATERIALS:  
HEX NUT & PANEL HOUSING- COPPER ALLOY, NICKEL PLATED PER MIL-C-26074  
PROTECTIVE CAP- ELASTOMER, BLACK  
SOCKET INSERT- THERMOPLASTIC, BLACK  
O-RING- ELASTOMER, BLACK  
CONTACTS- COPPER ALLOY, GOLD PLATED PER MIL-G-45204 OVER NICKEL PER QQ-N-290



**FACE VIEW**  
(SF4281-12SG-3ES SHOWN)



**HEX NUT**  
(UNASSEMBLED)



**RECOMMENDED PANEL CUT-OUT**

| HOLE PATTERN CHART |        |        |
|--------------------|--------|--------|
| POS.               | "X"    | "Y"    |
| 1                  | 0.108  | 0.125  |
| 2                  | 0.000  | 0.125  |
| 3                  | -0.108 | 0.125  |
| 4                  | -0.162 | 0.031  |
| 5                  | -0.108 | -0.062 |
| 6                  | -0.054 | -0.156 |
| 7                  | 0.054  | -0.156 |
| 8                  | 0.108  | -0.062 |
| 9                  | 0.162  | 0.031  |
| 10                 | 0.054  | 0.031  |
| 11                 | -0.054 | 0.031  |
| 12                 | 0.000  | -0.062 |

ALL DIMS. SHOWN TOL. ±0.001

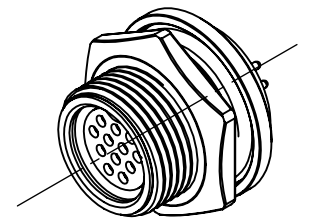
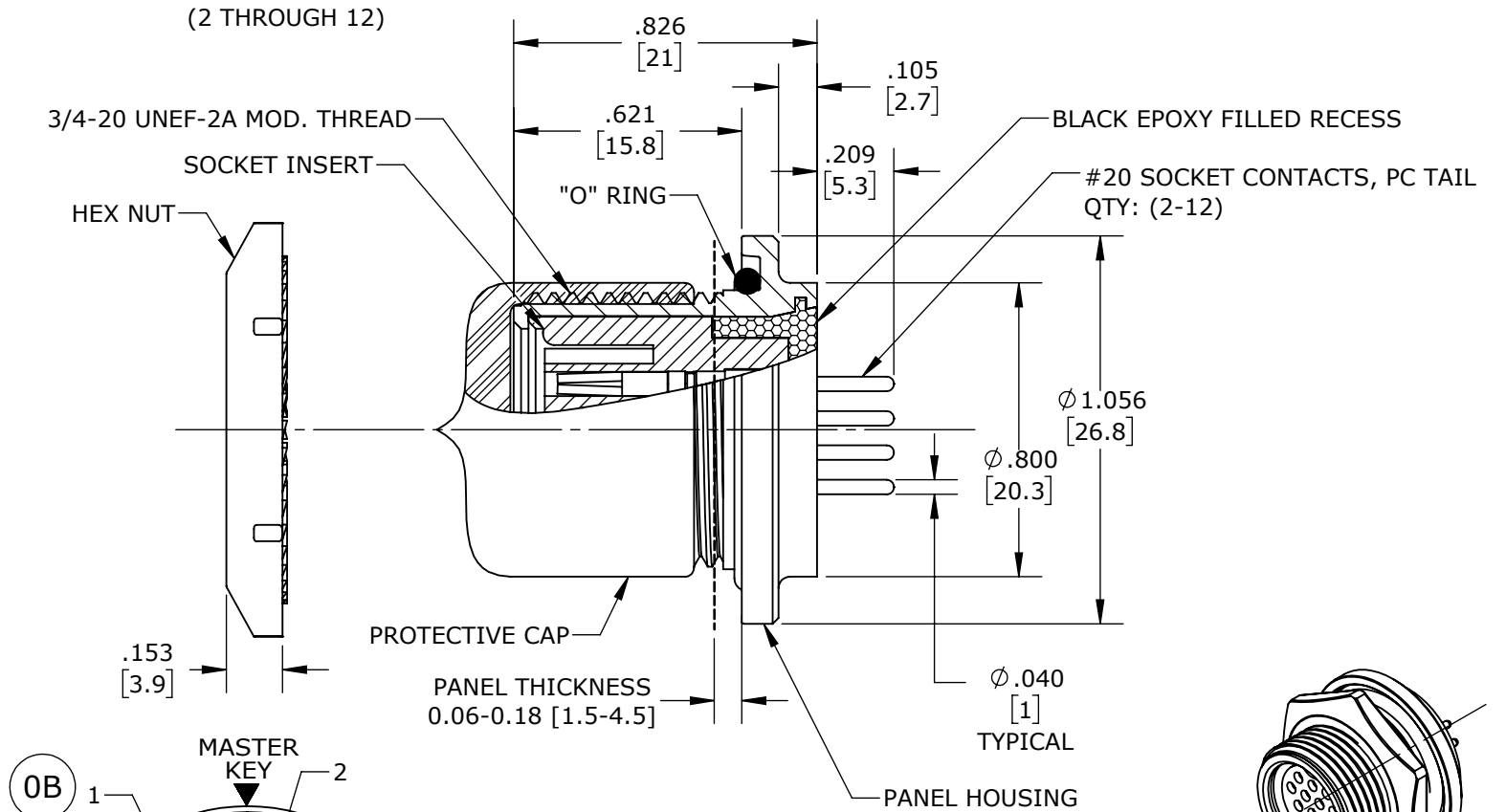
DIMENSIONS IN BRACKETS [ ] ARE METRIC, mm.

**RoHS COMPLIANT**

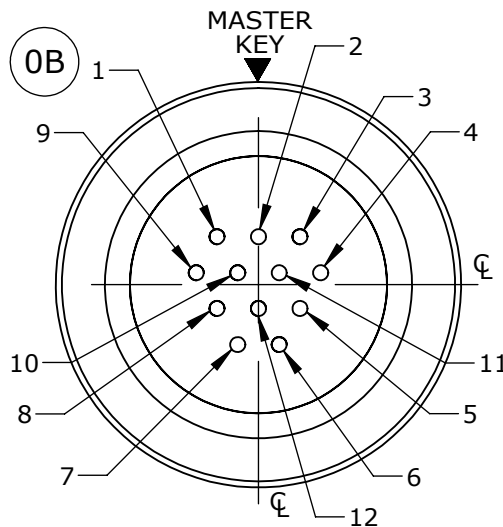
| POSITIONS       |       |       |       |       |       |       |       |       |       |        |        |        |
|-----------------|-------|-------|-------|-------|-------|-------|-------|-------|-------|--------|--------|--------|
| PART NUMBER     | POS 1 | POS 2 | POS 3 | POS 4 | POS 5 | POS 6 | POS 7 | POS 8 | POS 9 | POS 10 | POS 11 | POS 12 |
| SF4281-2SG-3ES  | ---   | ---   | ---   | OPEN  | ---   | ---   | ---   | ---   | OPEN  | ---    | ---    | ---    |
| SF4281-3SG-3ES  | OPEN  | ---   | OPEN  | ---   | ---   | ---   | ---   | ---   | ---   | ---    | ---    | OPEN   |
| SF4281-4SG-3ES  | OPEN  | ---   | OPEN  | ---   | OPEN  | ---   | ---   | OPEN  | ---   | ---    | ---    | ---    |
| SF4281-5SG-3ES  | ---   | OPEN  | ---   | OPEN  | ---   | OPEN  | OPEN  | ---   | OPEN  | ---    | ---    | ---    |
| SF4281-6SG-3ES  | OPEN  | OPEN  | ---   | OPEN  | OPEN  | ---   | OPEN  | OPEN  | ---   | ---    | ---    | ---    |
| SF4281-7SG-3ES  | OPEN  | OPEN  | OPEN  | OPEN  | ---   | OPEN  | OPEN  | ---   | OPEN  | ---    | ---    | ---    |
| SF4281-8SG-3ES  | OPEN  | ---   | OPEN  | OPEN  | OPEN  | OPEN  | OPEN  | OPEN  | OPEN  | ---    | ---    | ---    |
| SF4281-9SG-3ES  | OPEN  | OPEN  | OPEN  | OPEN  | OPEN  | OPEN  | OPEN  | OPEN  | OPEN  | ---    | ---    | ---    |
| SF4281-10SG-3ES | OPEN  | OPEN  | OPEN  | OPEN  | OPEN  | OPEN  | OPEN  | OPEN  | OPEN  | OPEN   | ---    | ---    |
| SF4281-11SG-3ES | OPEN  | OPEN  | OPEN  | OPEN  | OPEN  | OPEN  | OPEN  | OPEN  | OPEN  | OPEN   | OPEN   | ---    |
| SF4281-12SG-3ES | OPEN  | OPEN  | OPEN  | OPEN  | OPEN  | OPEN  | OPEN  | OPEN  | OPEN  | OPEN   | OPEN   | OPEN   |
| SF4281-XXSG-3ES |       |       |       |       |       |       |       |       |       |        |        |        |

NUMBER OF CONTACTS  
(2 THROUGH 12)

"---" HALF CLOSED FROM MATING END



**ASSEMBLED VIEW**  
(SCALE 1:1)  
(SF4281-12SG-3ES SHOWN  
WITHOUT PROTECTIVE CAP)



**WIRE VIEW**  
(SF4281-12SG-3ES SHOWN)

|  |       |          |  |                |
|--|-------|----------|--|----------------|
| 0C   | JGK   | 12/20/18 | REMOVED "E" DESIGNATION FROM ALL P/N'S.              |                |
| 0B   | JGK   | 03/23/18 | UPDATED HOLE PIN-OUT PATTERN TO MATCH PANEL PIN-OUT. |                |
| 0A   | JGK   | 11/30/17 | DRAWING CREATED FOR PROJECT #15019.                  |                |
| REV.   | INIT. | DATE     | DESCRIPTION  |                |
| ALL INFORMATION ILLUSTRATED IS THE PROPERTY OF "CONXALL CORPORATION." UNAUTHORIZED DUPLICATION OR DISTRIBUTION OF THIS DOCUMENT IS PROHIBITED.   |       |          | ORIG. DRAWN BY: JGK                                  | DATE: 11/30/17 |
|  |       |          | CHECKED BY:  |                |
| ALL UNITS ARE IN FEET, INCHES, FRACTION OF INCHES AND DECIMALS. UNLESS OTHERWISE SPECIFIED TOLERANCES: 3 PLACE DECIMALS ±.005 ANGLES ±1° FRACTIONS ±1/16 ± CRITICAL CHARACTERISTIC FLAG PER SPEC. XXXX |       |          | APPROVED BY:   |                |
|  |       |          | SCALE: 2:1   | SHEET: 1 OF 1  |
|  |       |          | FILE: SAME AS P/N                                    | DIRECTORY: SLW |
|  |       |          | PART NUMBER: SF4281-XXSG-3ES                         | REV: 0C        |



TITLE: SHIELDED PANEL ASSEMBLY (2-12) #20 PC TAIL, SOCKET CONTACTS SHIELDED MULTI-CON-X STANDARD PRODUCT  
CUSTOMER:   
PART NUMBER: SF4281-XXSG-3ES

# Mouser Electronics

Authorized Distributor

Click to View Pricing, Inventory, Delivery & Lifecycle Information:

## Switchcraft:

[SF4281-10SG-3ES](#) [SF4281-11SG-3ES](#) [SF4281-12SG-3ES](#) [SF4281-2SG-3ES](#) [SF4281-3SG-3ES](#) [SF4281-4SG-3ES](#) [SF4281-5SG-3ES](#) [SF4281-6SG-3ES](#) [SF4281-7SG-3ES](#) [SF4281-8SG-3ES](#) [SF4281-9SG-3ES](#)