

NOTES:

1. THE XLR CONNECTOR IS WIRED PIN-1 GROUND, PIN-2 HOT AND PIN-3 COLD.
2. MATERIALS:  
HOUSING AND COMPONENT END PANELS - ALUMINUM, BLACK ANODIZED  
CORNER GUARDS - TPE, BLUE
3. LASER ETCHED WHITE TEXT AND ARTWORK.
4. THIS PRODUCT IS RoHS COMPLIANT.

CUSTOMER DRAWING

						THIS DRAWING DESCRIBES A DESIGN CONSIDERED PROPRIETARY IN NATURE, DEVELOPED AND MANUFACTURED BY SWITCHCRAFT INC. AND IS RELEASED ON A CONFIDENTIAL BASIS FOR IDENTIFICATION PURPOSES ONLY.							
					UNLESS OTHERWISE SPECIFIED  1. ALL DIMENSIONS IN INCHES  - TWO PLACE DECIMALS    ±0.02  - THREE PLACE DECIMALS    ±0.005	SIZE	WIDTH		MULT	LBS/M	TEMPER		
						FINISH SPEC No.					MATERIAL SPEC No.		
						FIRST USED ON			SCALE 1:1			Switchcraft®	
D	28636	11/17/23	PC	TJK		DATE DRAWN 3/2/10	BY BHM	CHKD TJK 7-20-10	APVD BHM 8-10-10				
C	28564	2/13/23	TJK	TJK									
B	27673	5-1-16	TO	TJK									
A	26565	7-20-10	BHM	TJK									
REV	ECO NUMBER	DATE	BY	APVD									
REVISIONS					DO NOT SCALE DRAWING	INSTRUMENT DIRECT BOX, RoHS					PART No. SC800CT		REV D

SolidWorks CAD File



# SC800CT Instrument Direct Box

## Audio Specifications

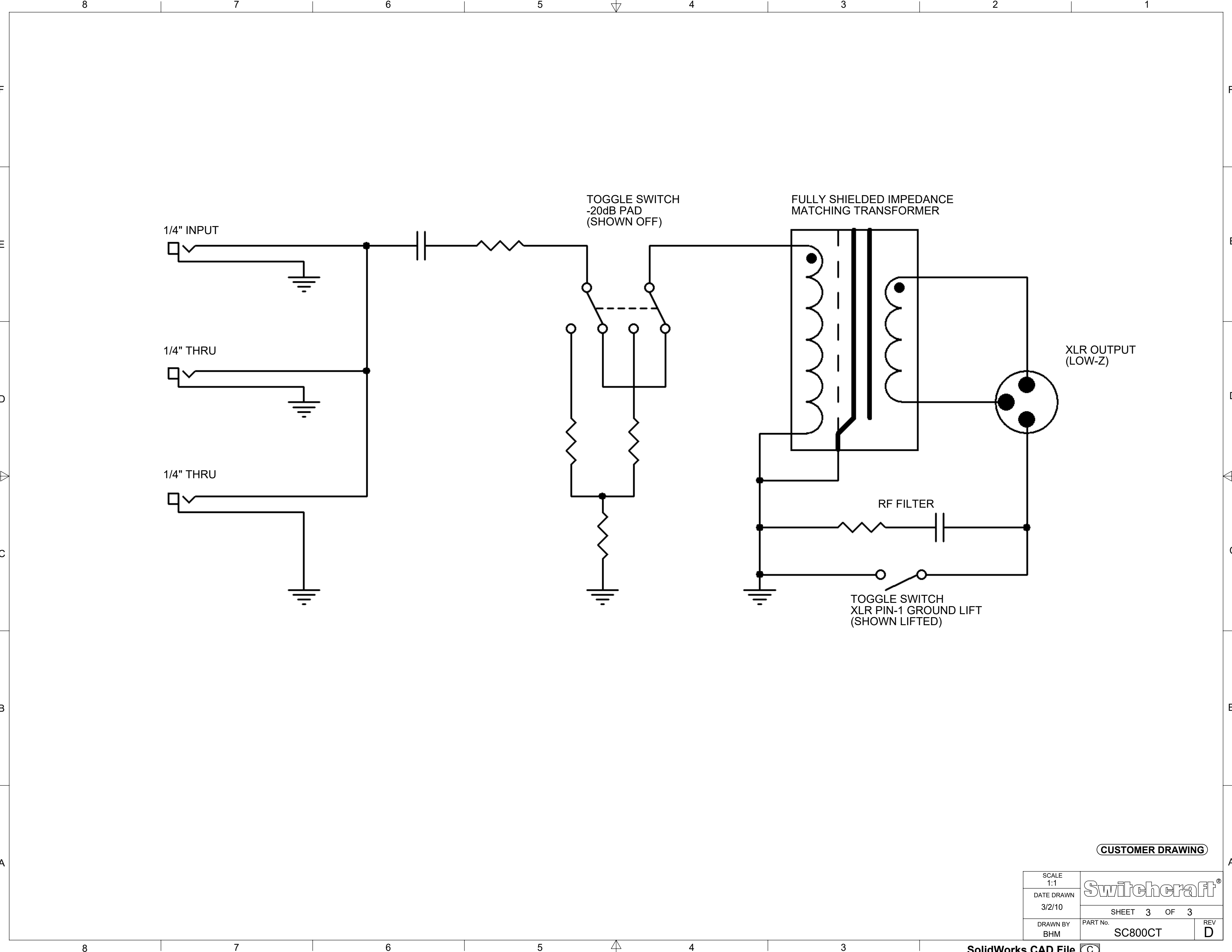
Switchcraft®

Parameter	Performance	Conditions
Frequency Response	20Hz - 20kHz	+/-0.3dB, ref 1kHz
Total Harmonic Distortion + Noise	< 0.007% < 0.15%	at 1kHz, +4dBu Input, 22kHz Bandwidth at 20Hz, +4dBu Input, 22kHz Bandwidth
Maximum Input Level	+19dBu	at 20Hz with 1% THD+Noise
Input Impedance	> 120kΩ	at 1kHz
Output Impedance	< 20Ω	at 1kHz
Common Mode Rejection Ratio (CMRR)	> 92dB	at 60Hz
Deviation from Linear Phase	< 4° < 1° < 9°	at 20Hz at 1kHz at 20kHz
Voltage Gain	-22dB -42dB	+/-1dB +/-1dB with 20dB pad engaged
Pad Attenuation	20dB	+/-1dB

Notes: All measurements were taken with a 25Ω unbalanced source and measured from the XLR with a 1kΩ balanced load.  
Specifications subject to change without notice.

CUSTOMER DRAWING

SCALE 1:1	Switchcraft®		
DATE DRAWN 3/2/10			
DRAWN BY BHM	PART No. SC800CT	SHEET 2 OF 3	REV D



CUSTOMER DRAWING

SCALE 1:1	<b>Switchcraft</b> <sup>®</sup>		
DATE DRAWN 3/2/10			
DRAWN BY BHM	PART No. SC800CT	SHEET 3 OF 3	REV D

# Mouser Electronics

Authorized Distributor

Click to View Pricing, Inventory, Delivery & Lifecycle Information:

[Switchcraft:](#)

[SC800CT](#)