

NOTES:

- ALL DIMENSIONS FOR REFERENCE ONLY.
- MATERIALS:  
HOUSING AND END PANELS - ALUMINUM, BLACK ANODIZED  
COMPONENT PANELS - ALUMINUM, BLUE ANODIZED
- LASER ETCHED WHITE TEXT AND ARTWORK.
- THIS PRODUCT IS RoHS COMPLIANT.

CUSTOMER DRAWING

						THIS DRAWING DESCRIBES A DESIGN CONSIDERED PROPRIETARY IN NATURE, DEVELOPED AND MANUFACTURED BY SWITCHCRAFT INC. AND IS RELEASED ON A CONFIDENTIAL BASIS FOR IDENTIFICATION PURPOSES ONLY.				
						SIZE	WIDTH	MULT	LBS/M	TEMPER
						FINISH			MATERIAL	
						SPEC No.			SPEC No.	
						FIRST USED ON			SCALE	
						DATE DRAWN			APVD	
						BY			BHM	
						CHKD			BHM	
						7-20-10			8-10-10	
						NAME			PART No.	
						INSTRUMENT DIRECT BOX			SC800CT	
						REV			REV	
						B			B	

SolidWorks CAD File



SC800CT Instrument Direct Box  
Audio Specifications



Parameter	Performance	Conditions
Frequency Response	20Hz - 20kHz	+/-0.3dB, ref 1kHz
Total Harmonic Distortion + Noise	< 0.007% < 0.15%	at 1kHz, +4dBu Input, 22kHz Bandwidth at 20Hz, +4dBu Input, 22kHz Bandwidth
Maximum Input Level	+19dBu	at 20Hz with 1% THD+Noise
Input Impedance	> 120kΩ	at 1kHz
Output Impedance	< 20Ω	at 1kHz
Common Mode Rejection Ratio (CMRR)	> 92dB	at 60Hz
Deviation from Linear Phase	< 4° < 1° < 9°	at 20Hz at 1kHz at 20kHz
Voltage Gain	-22dB -42dB	+/-1dB +/-1dB with 20dB pad engaged
Pad Attenuation	20dB	+/-1dB

Notes: All measurements were taken with a 25Ω unbalanced source and measured from the XLR with a 1kΩ balanced load.  
Specifications subject to change without notice.

CUSTOMER DRAWING

SCALE  
1:1

DATE DRAWN  
3/2/10

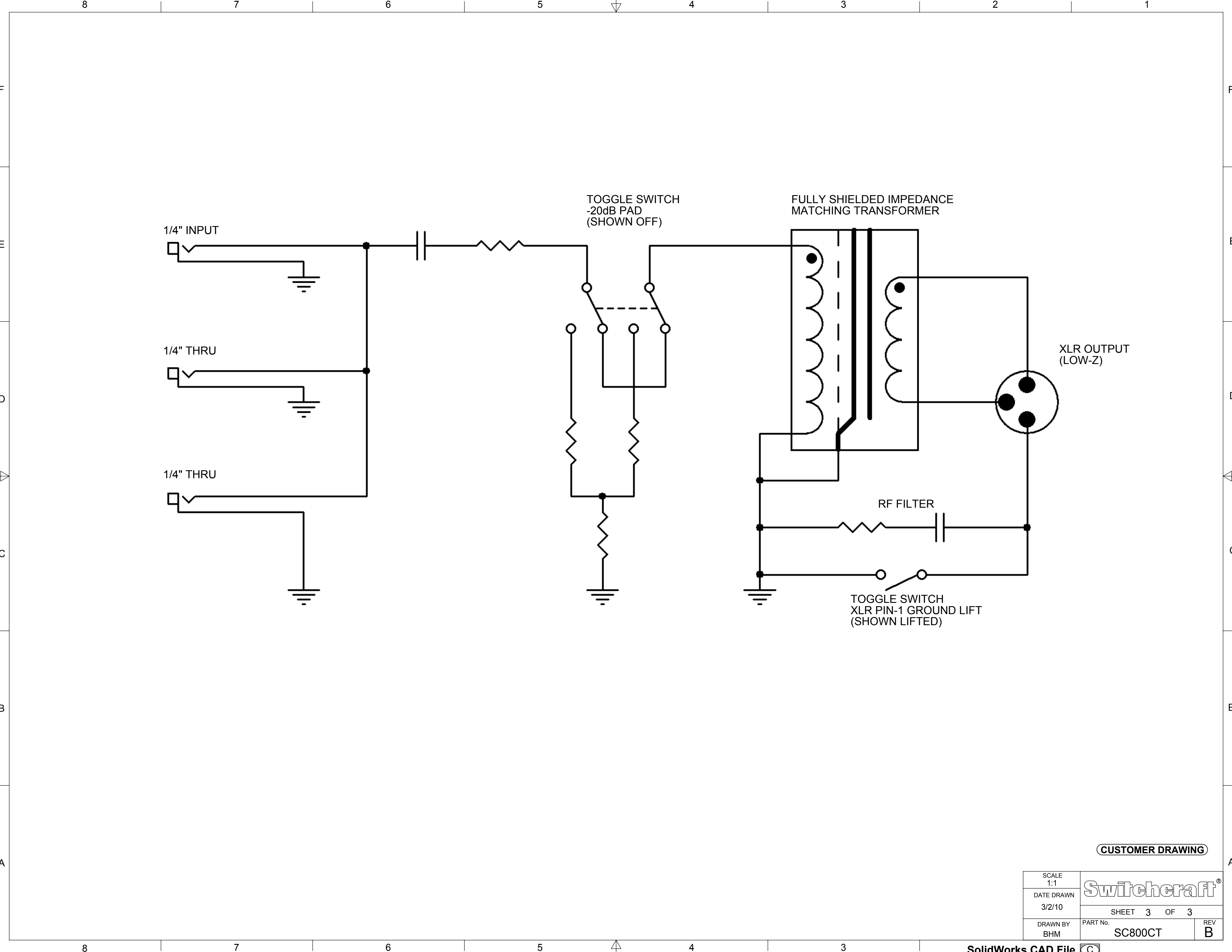
DRAWN BY  
BHM

Switchcraft®

SHEET 2 OF 3

PART No.  
SC800CT

REV  
B



CUSTOMER DRAWING

SCALE 1:1	<b>Switchcraft</b> <sup>®</sup>		
DATE DRAWN 3/2/10			
DRAWN BY BHM	PART No. SC800CT	SHEET 3 OF 3	REV B

# Mouser Electronics

Authorized Distributor

Click to View Pricing, Inventory, Delivery & Lifecycle Information:

[Switchcraft:](#)

[SC800CT](#)