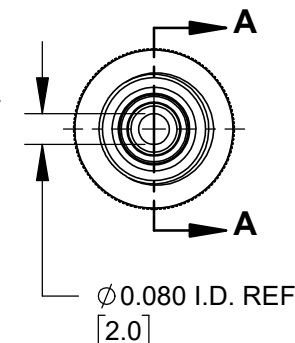
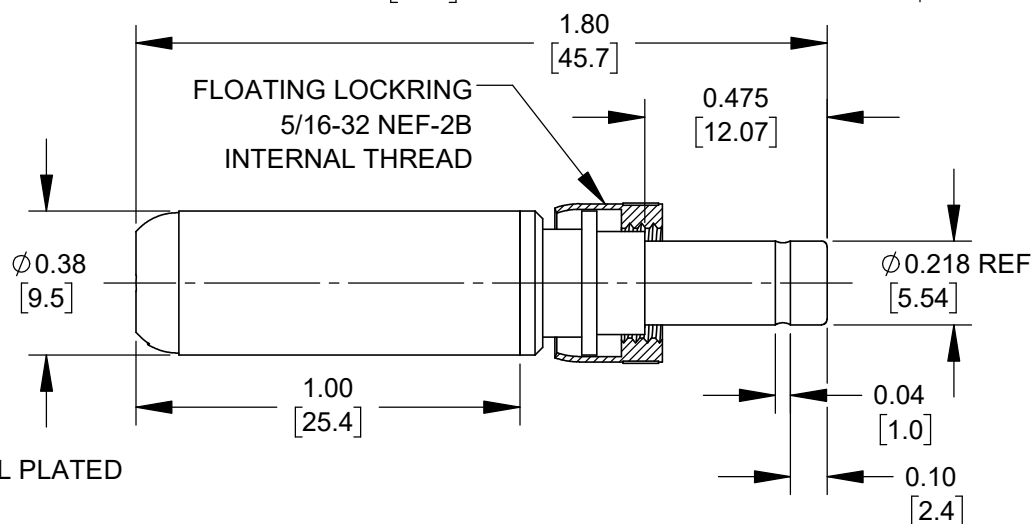
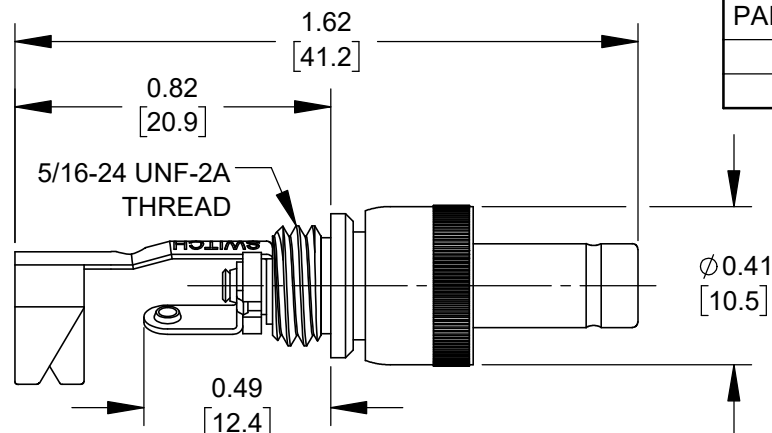


#### NOTES:

##### 1. MATERIALS:

CONDUCTORS & LOCKRING - BRASS, NICKEL PLATED  
TERMINALS - BRASS, TIN PLATED  
INSULATORS & HANDLE - THERMOPLASTIC

##### 2. THIS PRODUCT IS RoHS COMPLIANT.



**CUSTOMER DRAWING**

					THIS DRAWING DESCRIBES A DESIGN CONSIDERED PROPRIETARY IN NATURE, DEVELOPED AND MANUFACTURED BY SWITCHCRAFT INC. AND IS RELEASED ON A CONFIDENTIAL BASIS FOR IDENTIFICATION PURPOSES ONLY.				
					SIZE *	WIDTH *	MULT *	LBS/M *	TEMPER *
					FINISH *	MATERIAL *			
					SPEC No. *	SPEC No. *			
					FIRST USED ON *	SCALE 2:1			
					DATE DRAWN	BY	CHKD	APVD	Switchcraft®
					10/24/19	AM	03/13/24	03/13/24	
					NAME Ø 0.080 [2.0]mm x 0.475 LONG IMPROVED POWER PLUG W/LOCKRING, RoHS				PART No.
					SHEET 1 OF 1				REV
					S761KZ-S766KZ				A

DO NOT SCALE DRAWING

SolidWorks CAD File



# Mouser Electronics

Authorized Distributor

Click to View Pricing, Inventory, Delivery & Lifecycle Information:

[Switchcraft:](#)

[S761KZ](#)