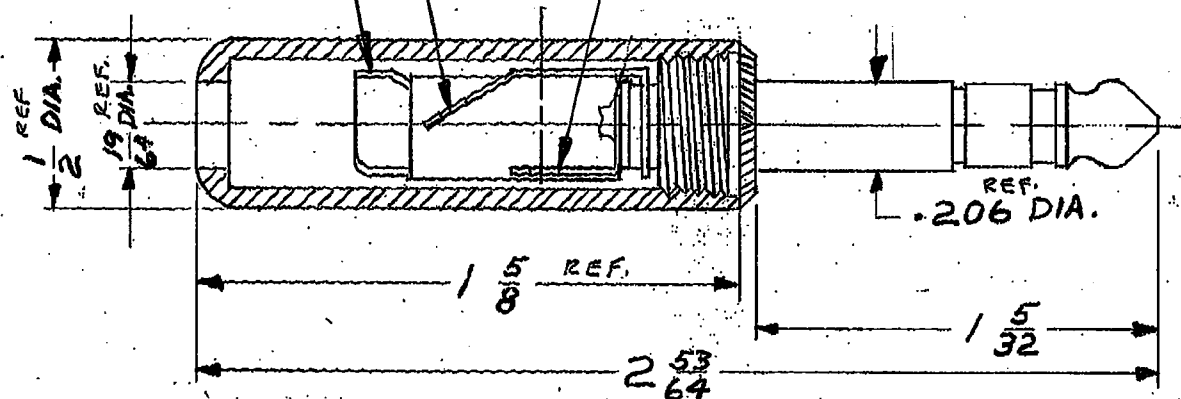


S 267

SLEEVE TERMINAL
CABLE CLAMP

RING TERMINAL

TIP TERMINAL



CUSTOMER DRAWING

REV	DATE	BY	REVISION	SIZE	WIDTH	MULT.	LEN. PER IN	TEMPER.			
2	8/27/71	SW	ADDED NOTE 1 ECO # 13146	<p>THIS DRAWING DESCRIBES A DESIGN CONSIDERED PROPRIETARY IN NATURE, DEVELOPED AND MANUFACTURED BY SWITCHCRAFT, INC., AND IS RELEASED ON A CONFIDENTIAL BASIS FOR IDENTIFICATION PURPOSE ONLY.</p> <p>UNLESS OTHERWISE SPECIFIED:</p> <p>1 - DECIMAL DIMENSIONS $\pm .003$</p> <p>2 - FRACTIONAL DIMENSIONS $\pm 1/64$</p> <p>3 - ANGLES $\pm 1/2^\circ$</p> <p>4 - ALL DIA'S CONCENTRIC WITHIN .003 T.I.R.</p> <p>5 - ALL DIMENSIONS IN INCHES</p> <p>6 - FOR THREADS USE UNIFIED PLUG AND RING GAGES ONLY.</p> <p>7 - REMOVE ALL BURRS.</p> <p>8 - PART TO BE FABRICATED AS SPECIFIED. MAKE NO DIMENSIONAL ALLOWANCES FOR APPLIED FINISHES, I.E., PLATING, PAINTING, ETC.</p> <p>9 - HOLES ON SAME CENTERLINE MUST BE ALIGNED WITHIN $\pm .002$</p> <p>DO NOT SCALE DRAWING</p>							
3	8/27/71	SW	CHANGED NOTE 1 ECO # 13889						DRAWN BY SW	DATE 8-27-71	FINISH
4	8/27/71	SW	NEW CLAMP TERM ECO # 14034						CHECKED BY H.K.	DATE 8-27-71	PER FINISH SPEC. NO.
B	8/27/71	SW	ECO # 20627						APPROVED BY	DATE	MATERIAL
				SCALE 2:1		PER MAT. SPEC. NO.					
				FIRST USED ON		<p>EXHIBIT</p>					
				NAME 3-CONDUCTOR		PART NO. S 267		ISSUE B			
				LITTEL PLUG .206 DIA		SHEET 1 OF 1					

002E002-A1

1 2 3 4 5 6 7 8 9 10 11 12 13 14 15 16 17 18 19 20 21 22 23 24 25 26 27 28 29 30 46

Mouser Electronics

Authorized Distributor

Click to View Pricing, Inventory, Delivery & Lifecycle Information:

[Switchcraft:](#)

[S267](#)