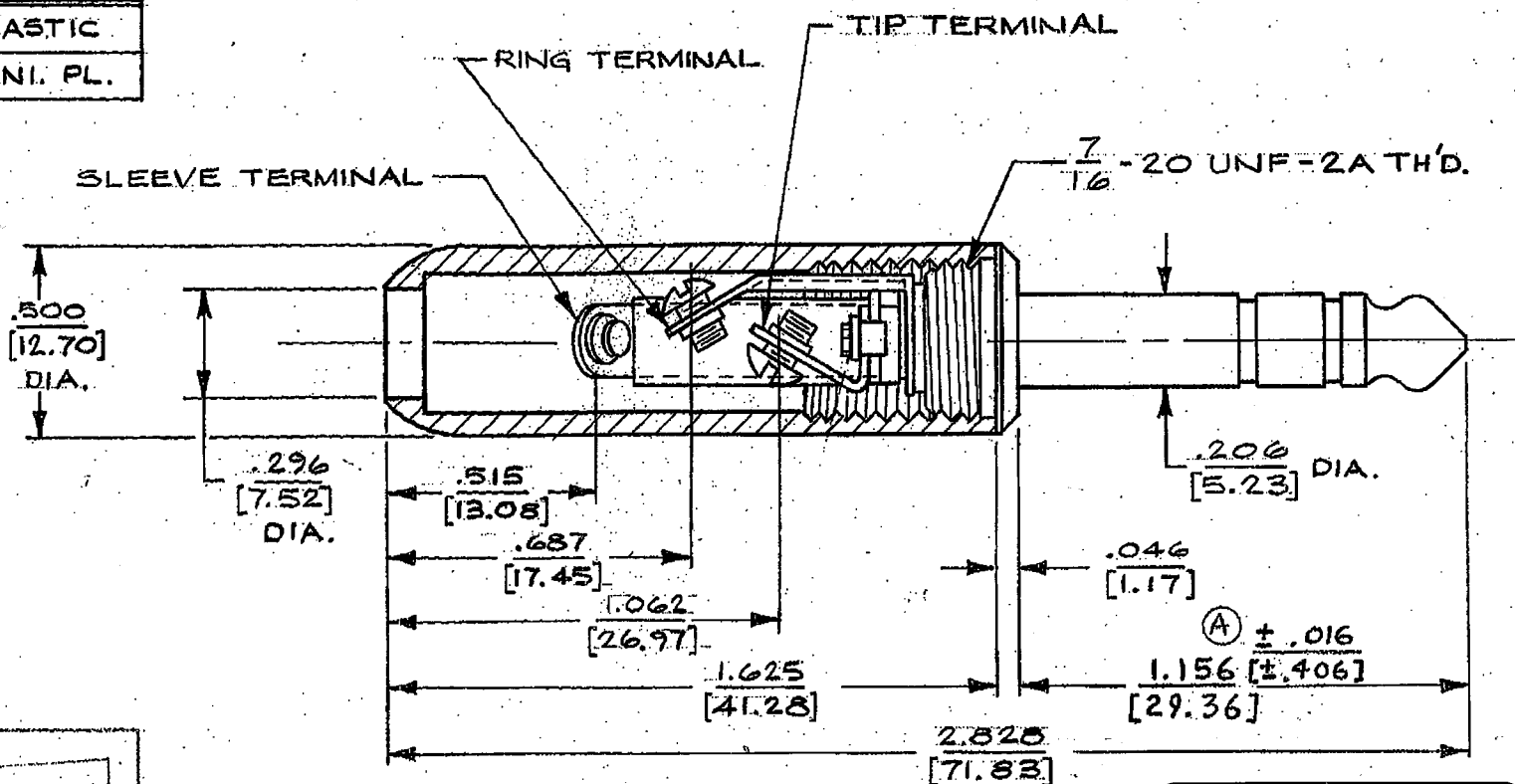


PART NO.	HANDLE
S-260	BLK. PLASTIC
S-290	BRASS NI. PL.



CUSTOMER DRAWING

STAR SYMBOL DENOTES CRITICAL DIMENSION, SEE S/C ENGINEERING STANDARD ES-0001.	SIZE	WIDTH	MULT.	LBS. PER M	TEMPER
---	------	-------	-------	------------	--------

THIS DRAWING DESCRIBES A DESIGN CONSIDERED PROPRIETARY IN NATURE, DEVELOPED AND MANUFACTURED BY SWITCHCRAFT, INC., AND IS RELEASED ON A CONFIDENTIAL BASIS FOR IDENTIFICATION PURPOSE ONLY.

UNLESS OTHERWISE SPECIFIED:

- 1 - DECIMAL DIMENSIONS $\pm .005$ [0.13]
- 2 - FRACTIONAL DIMENSIONS $\pm 1/64$ [0.38]
- 3 - ANGLES $\pm 1/2^\circ$
- 4 - ALL DIA'S CONCENTRIC WITHIN .005 T.I.R.
- 5 - ALL DIMENSIONS IN INCHES [0.13]
- 6 - FOR THREADS USE UNIFIED PLUG AND RING GAGES ONLY.
- 7 - REMOVE ALL BURRS.
- 8 - PART TO BE FABRICATED AS SPECIFIED. MAKE NO DIMENSIONAL ALLOWANCES FOR APPLIED FINISHES, I.E., PLATING, PAINTING, ETC.
- 9 - HOLES ON SAME CENTERLINE MUST BE ALIGNED WITHIN $\pm .002$ [0.05]

DO NOT SCALE DRAWING

DRAWN BY 18	DATE 14 JUNE 78	FINISH
CHECKED BY TN	DATE 28 JUNE 78	PER FINISH SPEC. NO.
APPROVED BY CK	DATE 6-29-78	MATERIAL
SCALE 1/1		PER MAT. SPEC. NO.
FIRST USED ON		
NAME 3 CONDUCTOR LITTEL		PART NO. S-260
PLUG .206 [5.23] DIA.		ISSUE C
SHEET 1 OF 1		

ROUTING (12) (16) (46)

ISS	SYM	REVISION	BY	DATE
2		REWORKED & ADDED METRIC DIM'S.	18	14 JUNE 78
3	A	2.016 TOL. ADDED	R.Q.	10-25-84
4		ECO # 12419		
5		ADDED NOTE 1	10/27/84	
		CHANGED NOTE 1	08/03/87	
		ECO # 13889		
A		ECO # 15724	F.B.	11/31/90
B		ECO # 19646	T.D.	8-26-96
C		20627	T.D.	6-12-96

Mouser Electronics

Authorized Distributor

Click to View Pricing, Inventory, Delivery & Lifecycle Information:

[Switchcraft:](#)

[S260](#)