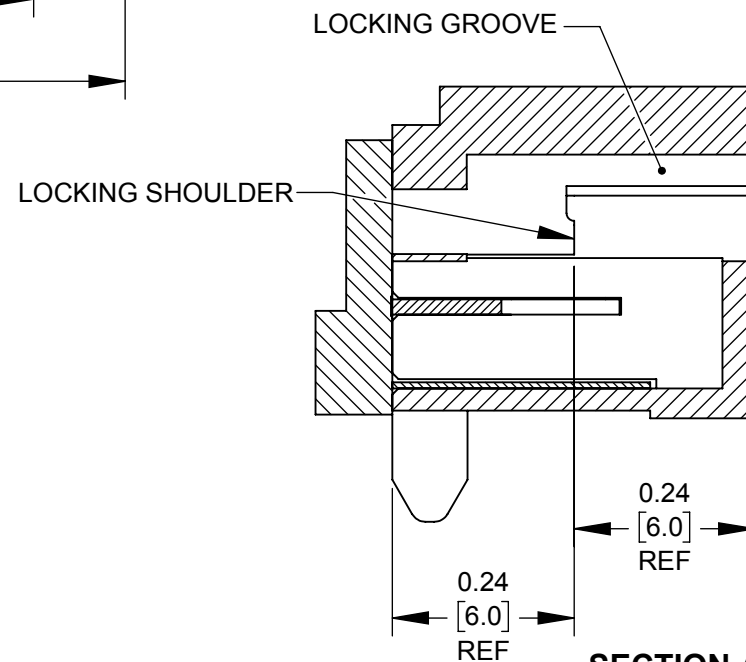
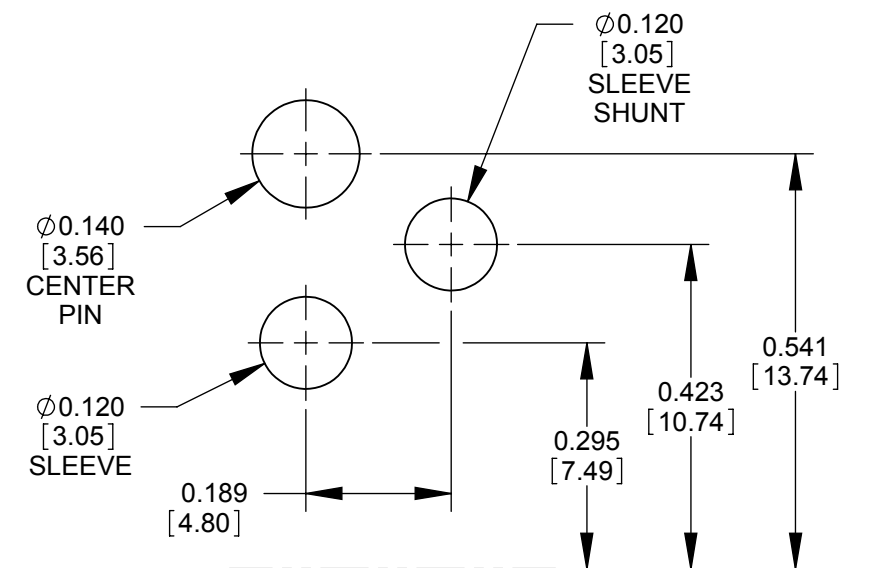
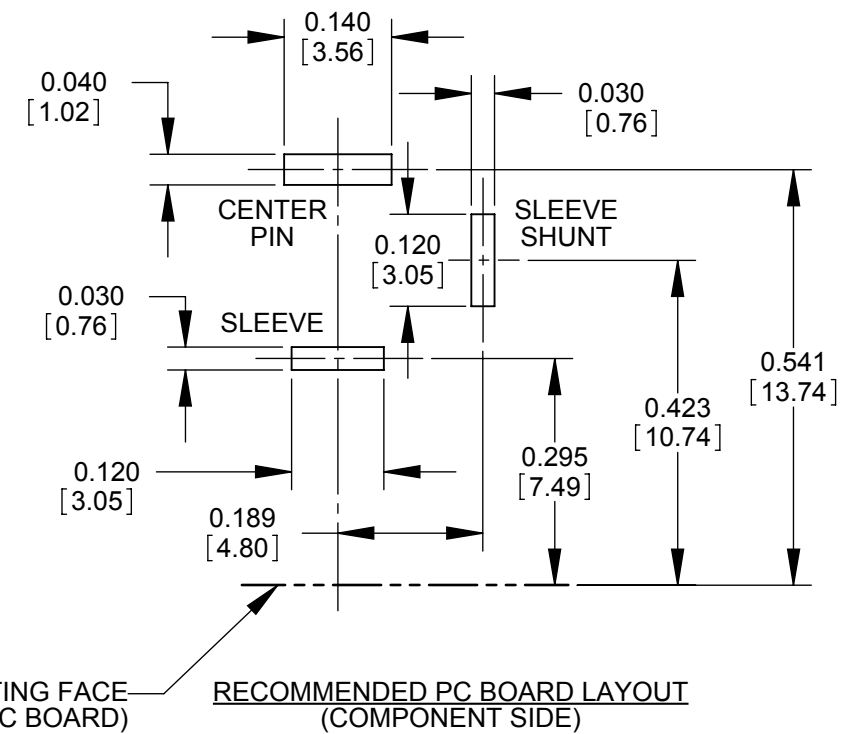


LIFE: 5000 CYCLES;
 INSERTION FORCE: 5LB [2.3 KG] MAX;
 WITHDRAWAL FORCE: 0.5 LB [0.2 KG] MIN;
 CONTACT RESISTANCE: 30 MILLIOHM MAX, 60 MILLIOHM MAX. AFTER TEST;
 INSULATION RESISTANCE: 30 MEGAOHM MIN. @ 100VDC;
 DIELECTRIC WITHSTANDING VOLTAGE: 250VAC FOR 1 MINUTE;
 CURRENT (CARRYING): 5A
 OPERATING TEMPERATURE: -30°C TO +65°C



JACK MATING FACE
(EDGE OF PC BOARD)



JACK MATING FACE-
(EDGE OF PC BOARD)

CUSTOMER DRAWING

					STAR SYMBOL DENOTES CRITICAL DIMENSION	THIS DRAWING DESCRIBES A DESIGN CONSIDERED PROPRIETARY IN NATURE, DEVELOPED AND MANUFACTURED BY SWITCHCRAFT INC. AND IS RELEASED ON A CONFIDENTIAL BASIS FOR IDENTIFICATION PURPOSES ONLY.										
					UNLESS OTHERWISE SPECIFIED 1. ALL DIMENSIONS IN INCHES [mm] - TWO PLACE DECIMALS ±0.02 [0.5] - THREE PLACE DECIMALS ±0.005 [0.13]	SIZE		WIDTH		MULT		LBS/M		TEMPER		
						FINISH SPEC No.						MATERIAL SPEC No.				
						FIRST USED ON				SCALE 4:1		Switchcraft®				
						DATE DRAWN 10-12-17		BY SRC	CHKD TJK 8/17/18		APVD TJK 8/17/18					
A	28064	08-30-18	PC	TJK		NAME						PART No.				REV
REV	ECO NUMBER	DATE	BY	APVD	LOCKING POWER JACK, PC TERMINALS, Ø0.08 [2.0 mm], RoHS						RAPC722BKZ				A	
REVISIONS					DO NOT SCALE DRAWING											

Mouser Electronics

Authorized Distributor

Click to View Pricing, Inventory, Delivery & Lifecycle Information:

[Switchcraft:](#)

[RAPC722BKZ](#)