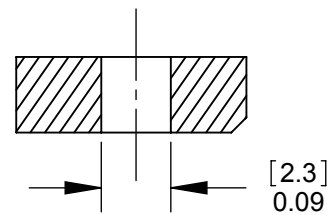
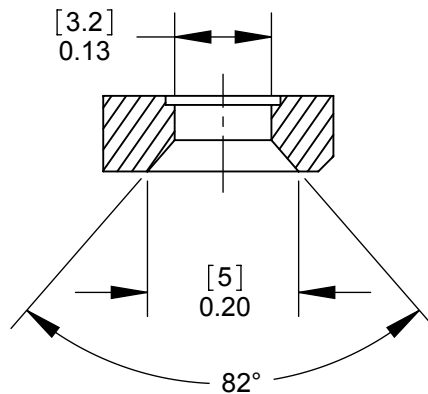


**PD3FSC1
FRONT MOUNT**
SECTION A-A
SCALE 4 : 1

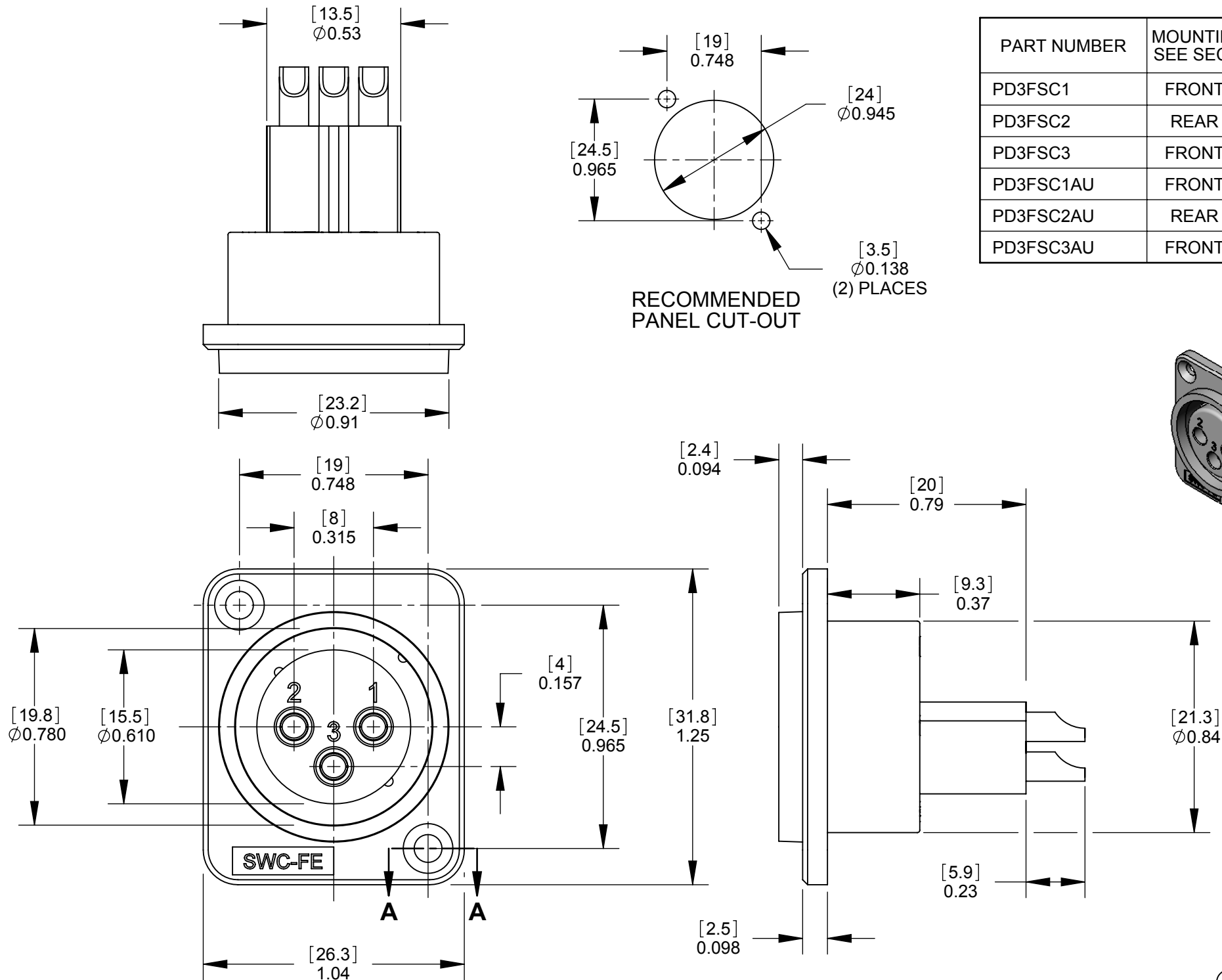


**PD3FSC2
REAR MOUNT**
SECTION A-A
SCALE 4 : 1



**PD3FSC3
FRONT MOUNT**
SECTION A-A
SCALE 4 : 1

- NOTES:
1. MATERIALS:
HOUSING - THERMOPLASTIC, BLACK
PINS - COPPER ALLOY (SEE TABLE FOR FINISH)
 2. THESE PRODUCTS ARE RoHS COMPLIANT.



CUSTOMER DRAWING

					<div>UNLESS OTHERWISE SPECIFIED</div> <div>1. ALL DIMENSIONS IN INCHES</div> <div>- TWO PLACE DECIMALS ±0.02</div> <div>- THREE PLACE DECIMALS ±0.005</div>	THIS DRAWING DESCRIBES A DESIGN CONSIDERED PROPRIETARY IN NATURE, DEVELOPED AND MANUFACTURED BY SWITCHCRAFT INC. AND IS RELEASED ON A CONFIDENTIAL BASIS FOR IDENTIFICATION PURPOSES ONLY.															
						SIZE	WIDTH		MULT		LBS/M		TEMPER								
						FINISH						MATERIAL									
						SPEC No.						SPEC No.									
						FIRST USED ON				SCALE		<div>Switchcraft®</div>									
								2:1													
A	22118	1/14/98	RS	TJK		DATE DRAWN	BY	CHKD		APVD											
					4/27/10	RS	RS		TJK												
							4/27/10		4/28/10		SHEET 1 OF 1										
REV	ECO NUMBER	DATE	BY	APVD	NAME					PART No.					REV						
REVISIONS					DO NOT SCALE DRAWING					PLASTIC PANEL MOUNT					PD3FSC SERIES					A	
										QG CONNECTORS, SOLDERCUP, RoHS											

Mouser Electronics

Authorized Distributor

Click to View Pricing, Inventory, Delivery & Lifecycle Information:

Switchcraft:

[PD3FSC1](#) [PD3FSC1AU](#) [PD3FSC2](#) [PD3FSC2AU](#) [PD3FSC3](#) [PD3FSC3AU](#)