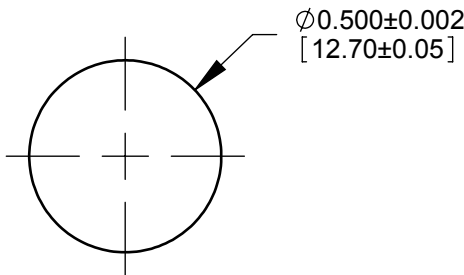
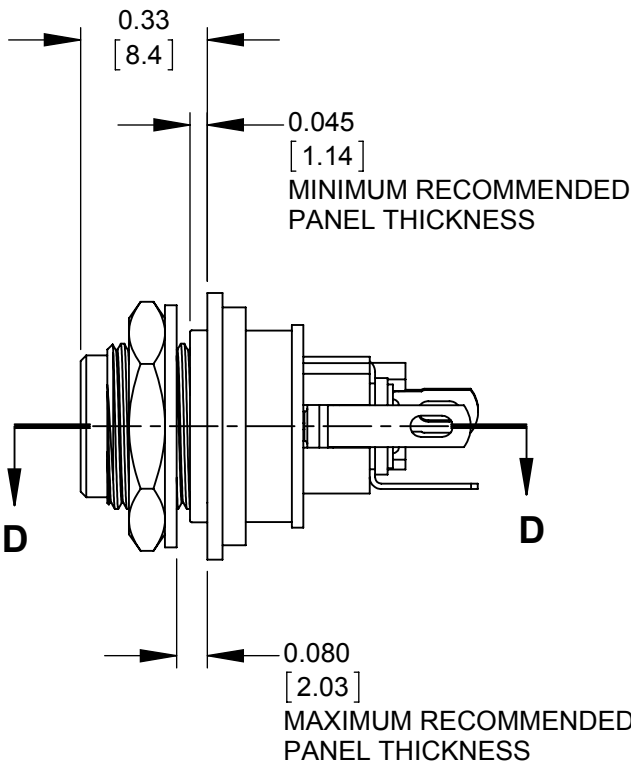
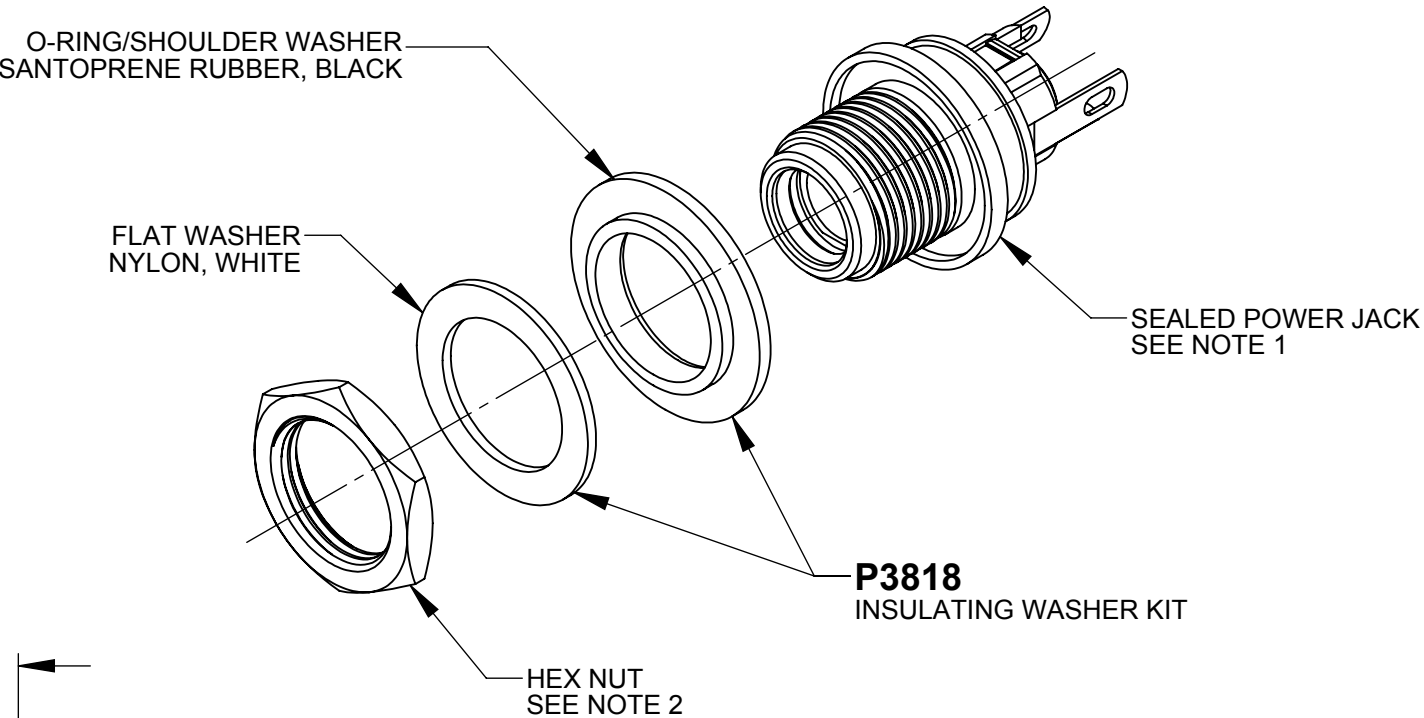


SECTION D-D
SCALE 3 : 1



RECOMMENDED
PANEL MOUNTING HOLE
FOR GROUND ISOLATING WASHER KIT



NOTES:

- INSULATING WASHER KIT TO BE USED WITH THE FOLLOWING PRODUCTS.
- L712AS, L712RAS, PCL712AS
- L722AS, L722RAS, PCL722AS
- HEX NUT IS SUPPLIED WITH THE SEALED POWER JACK.
METAL WASHER PROVIDED WITH SEALED POWER JACK
SHOULD BE DISCARDED FOR GROUND ISOLATION INSTALLATION.
- ROUNDED O-RING SIDE OF SHOULDER WASHER TO BE ASSEMBLED
INTO FLANGE OF JACK BUSHING AS SHOWN.
- ALL DIMENSIONS ARE SHOWN FOR REFERENCE ONLY.
- THIS PRODUCT IS RoHS COMPLIANT.

CUSTOMER DRAWING

					<div>UNLESS OTHERWISE SPECIFIED</div> <div>1. ALL DIMENSIONS IN INCHES</div> <div>- TWO PLACE DECIMALS ±0.02</div> <div>- THREE PLACE DECIMALS ±0.005</div>	THIS DRAWING DESCRIBES A DESIGN CONSIDERED PROPRIETARY IN NATURE, DEVELOPED AND MANUFACTURED BY SWITCHCRAFT INC. AND IS RELEASED ON A CONFIDENTIAL BASIS FOR IDENTIFICATION PURPOSES ONLY.													
						SIZE	WIDTH		MULT		LBS/M		TEMPER						
						FINISH SPEC No.						MATERIAL SPEC No.							
						FIRST USED ON				SCALE 2:1		Switchcraft®							
						DATE DRAWN	BY	CHKD		APVD									
A	26829	5/15/14	TJK	AB		9/05/13	AB	AB 9/05/13		BDS 9/05/13		SHEET 1 OF 1							
REV	ECO NUMBER	DATE	BY	APVD	NAME INSULATING WASHER KIT, GROUND ISOLATION, RoHS						PART No. P3818				REV A				
REVISIONS					DO NOT SCALE DRAWING														

Mouser Electronics

Authorized Distributor

Click to View Pricing, Inventory, Delivery & Lifecycle Information:

[Switchcraft:](#)

[P3818](#)