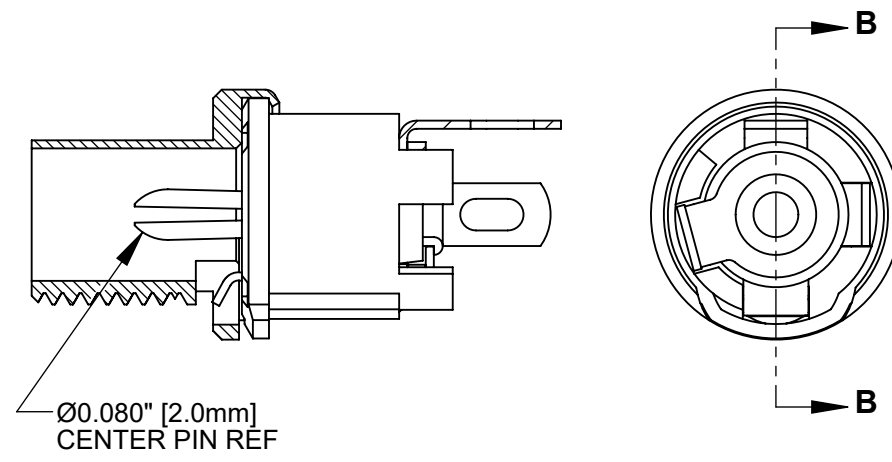
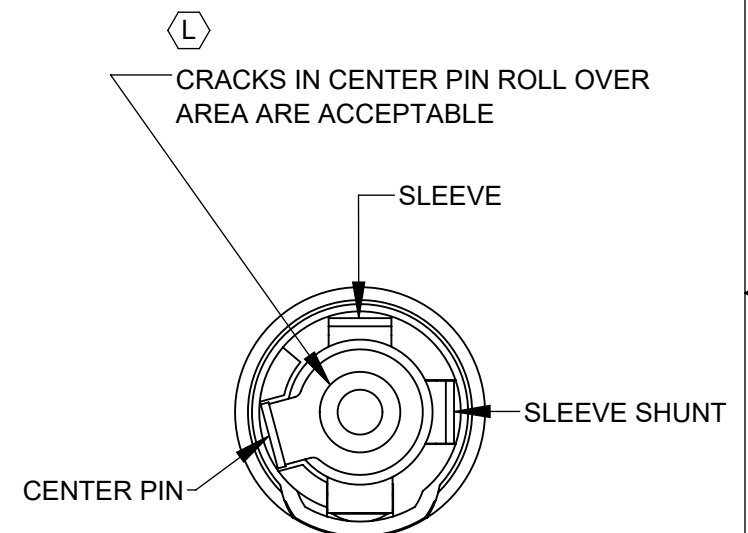
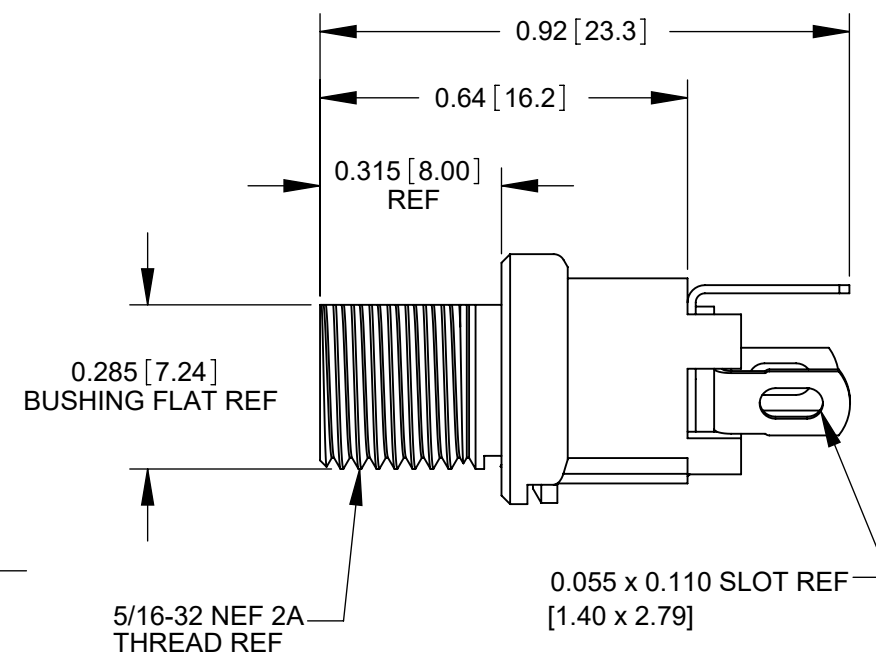
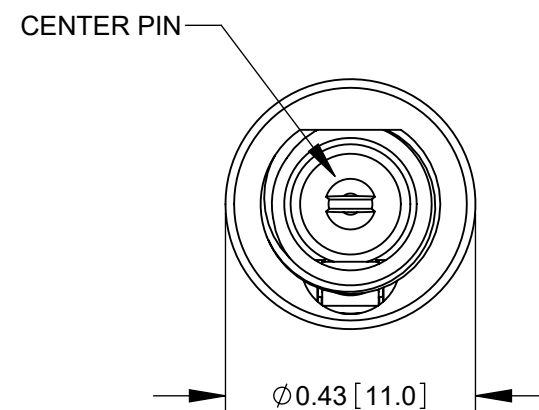
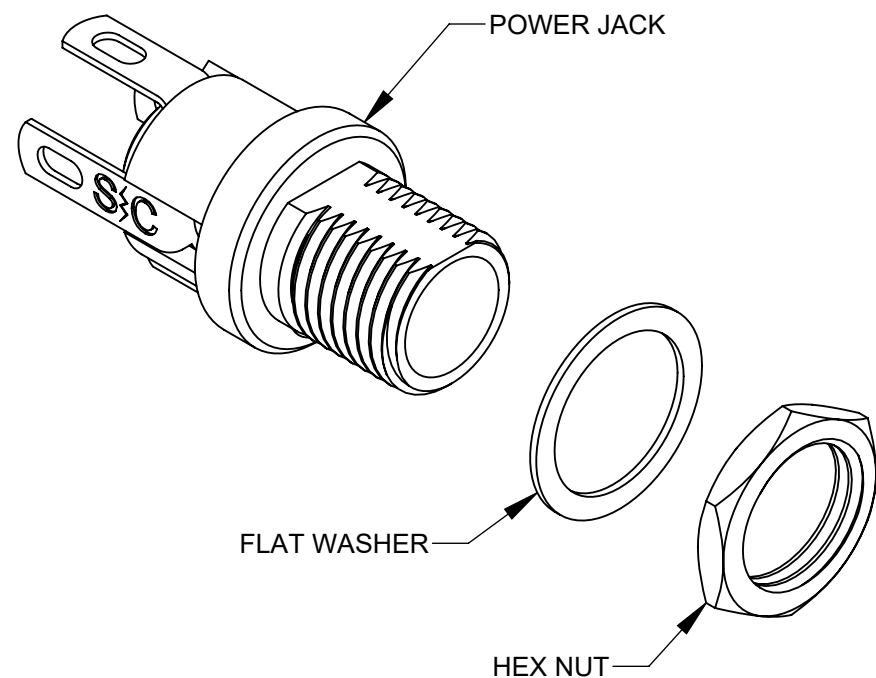
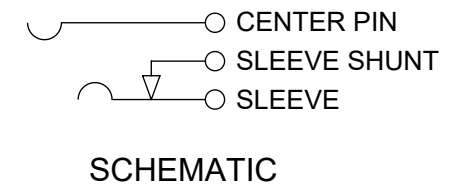


L712A



L722A



NOTES:

1. DIMENSIONS SHOWN FOR REFERENCE ONLY.
2. HEX NUT AND FLAT WASHER SUPPLIED UNASSEMBLED.
3. MATERIAL:
HOUSING, HEX NUT - COPPER ALLOY, NICKEL PLATED
INSULATOR HOUSING - THERMOPLASTIC
TERMINAL INSULATORS - PHENOLIC
FLAT WASHER - STEEL, NICKEL PLATED
PIN, SPRING, TERMINALS - COPPER ALLOY, SILVER PLATED
4. IT IS RECOMMENDED THAT THE JACK MOUNTING NUT BE TIGHTENED SNUG BY HAND BEFORE APPLYING A FINAL TIGHTENING TORQUE OF 8-10 LB-IN USING HAND TOOLS ONLY. POWER DRIVER OR IMPACT DRIVERS ARE NOT RECOMMENDED.
5. THESE PRODUCTS ARE RoHS COMPLIANT

CUSTOMER DRAWING

					<div>UNLESS OTHERWISE SPECIFIED</div> <div>1. ALL DIMENSIONS IN INCHES [mm]</div> <div>- TWO PLACE DECIMALS ±0.02 [0.5]</div> <div>- THREE PLACE DECIMALS ±0.005 [0.13]</div>	THIS DRAWING DESCRIBES A DESIGN CONSIDERED PROPRIETARY IN NATURE, DEVELOPED AND MANUFACTURED BY SWITCHCRAFT INC. AND IS RELEASED ON A CONFIDENTIAL BASIS FOR IDENTIFICATION PURPOSES ONLY.										
						SIZE	WIDTH		MULT		LBS/M		TEMPER			
						FINISH SPEC No.					MATERIAL SPEC No.					
						FIRST USED ON				SCALE 3:1		<div>Switchcraft®</div>				
L	28397	06/11/21	PC	TJK		DATE DRAWN	BY	CHKD	APVD							
K	26591	8/6/10	RS	TJK		2-21-94	ES	JLD	GHJ							
					2-21-94				2-21-94		SHEET 1 OF 1					
REV	ECO NUMBER	DATE	BY	APVD	NAME					PART No.					REV	
REVISIONS					DO NOT SCALE DRAWING	POWER JACKS L712A, L722A, RoHS					L712A L722A					L

Mouser Electronics

Authorized Distributor

Click to View Pricing, Inventory, Delivery & Lifecycle Information:

[Switchcraft:](#)

[L712A](#)