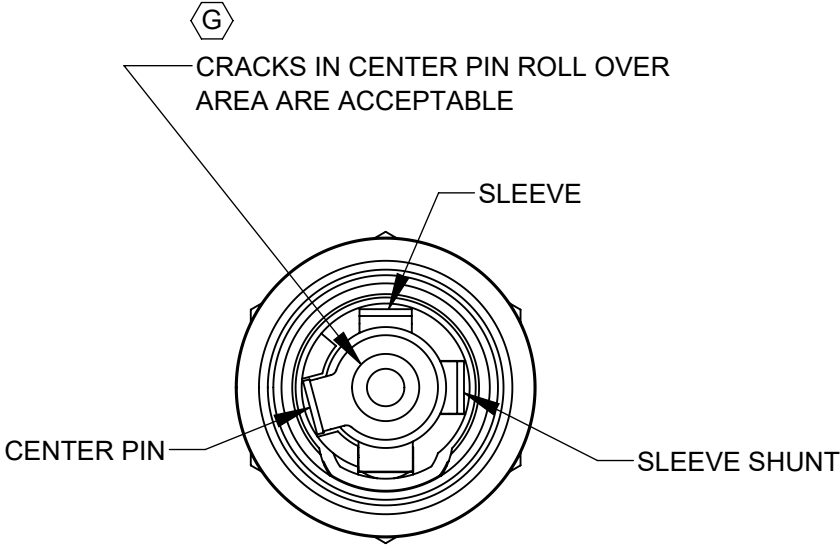
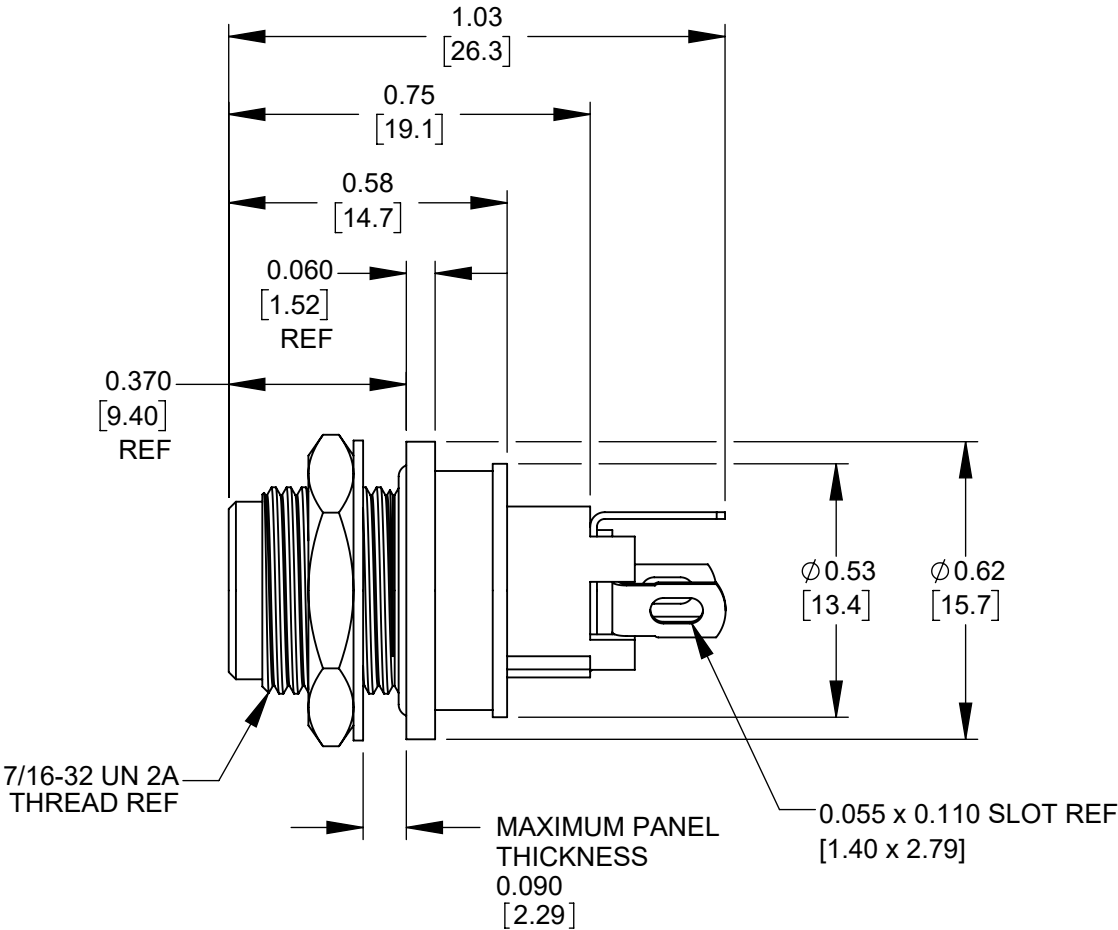
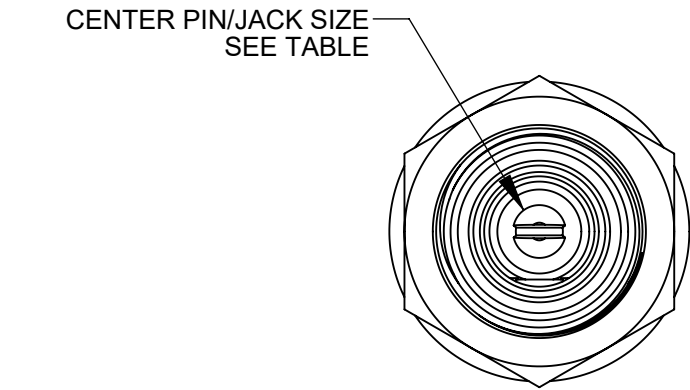
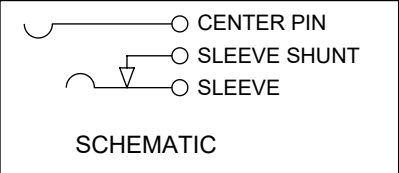


RECOMMENDED PANEL MTG HOLE



- NOTES:
- 1. DIMENSIONS SHOWN FOR REFERENCE ONLY.
  - 2. HEX NUT, FLAT WASHER, AND PANEL O-RING SUPPLIED UNASSEMBLED
  - 3. MATERIAL:  
HOUSINGS, HEX NUT - COPPER ALLOY, NICKEL PLATED  
INSULATOR HOUSING - THERMOPLASTIC  
O-RINGS - THERMOPLASTIC RUBBER, LUBRICATED WITH SYNTHETIC GREASE  
TERMINAL INSULATORS - PHENOLIC  
FLAT WASHER - STEEL, NICKEL PLATED  
PIN, SPRING, TERMINALS - COPPER ALLOY, SILVER PLATED
  - 4. IT IS RECOMMENDED THAT THE JACK MOUNTING NUT BE TIGHTENED SNUG BY HAND BEFORE APPLYING A FINAL TIGHTENING TORQUE OF 8-10 LB-IN USING HAND TOOLS ONLY. POWER DRIVER OR IMPACT DRIVERS ARE NOT RECOMMENDED.
  - 5. THIS PRODUCT IS RoHS COMPLIANT

G	28397	06-11-21	PC	TJK
F	28350	12-22-20	PC	TJK
E	28220	11-8-19	PC	TJK
D	27229	12-4-13	TO	TJK
C	27151	5-22-13	TO	TJK
B	27029	10/01/12	AB	TJK
A	26591	8/6/10	RS	TJK
REV	ECO NUMBER	DATE	BY	APVD
REVISIONS				

UNLESS OTHERWISE SPECIFIED

1. ALL DIMENSIONS IN INCHES [mm]

- TWO PLACE DECIMALS ±0.02 [0.5]

- THREE PLACE DECIMALS ±0.005 [0.13]

DO NOT SCALE DRAWING

PART NUMBER	CENTER PIN/ JACK SIZE	MATING POWER PLUG
L712AS	0.10 (2.5 mm)	761KS12, 761KS15, 761KS17
L722AS	0.080 (2.0 mm)	S761KS12, S761KS15, S761KS17 767KS12, 767KS15, 767KS17

THIS DRAWING DESCRIBES A DESIGN CONSIDERED PROPRIETARY IN NATURE, DEVELOPED AND MANUFACTURED BY SWITCHCRAFT INC. AND IS RELEASED ON A CONFIDENTIAL BASIS FOR IDENTIFICATION PURPOSES ONLY.									
SIZE		WIDTH		MULT		LBS/M		TEMPER	
FINISH SPEC No.					MATERIAL SPEC No.				
FIRST USED ON				SCALE 2.5:1		Switchcraft®			
DATE DRAWN	BY	CHKD		APVD					
7/23/09	PNK	RS 8/6/10		TJK 8/6/10		SHEET 1 OF 1			
NAME SEALED POWER JACKS SOLDER LUG, RoHS					PART No. L712AS, L722AS				REV G

# Mouser Electronics

Authorized Distributor

Click to View Pricing, Inventory, Delivery & Lifecycle Information:

[Switchcraft:](#)

[L712AS](#) [L722AS](#) [L712ASH](#)