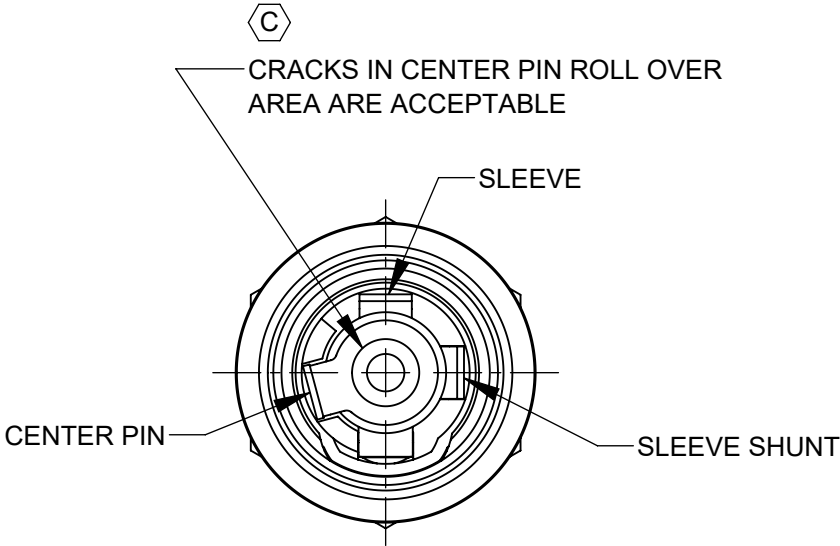
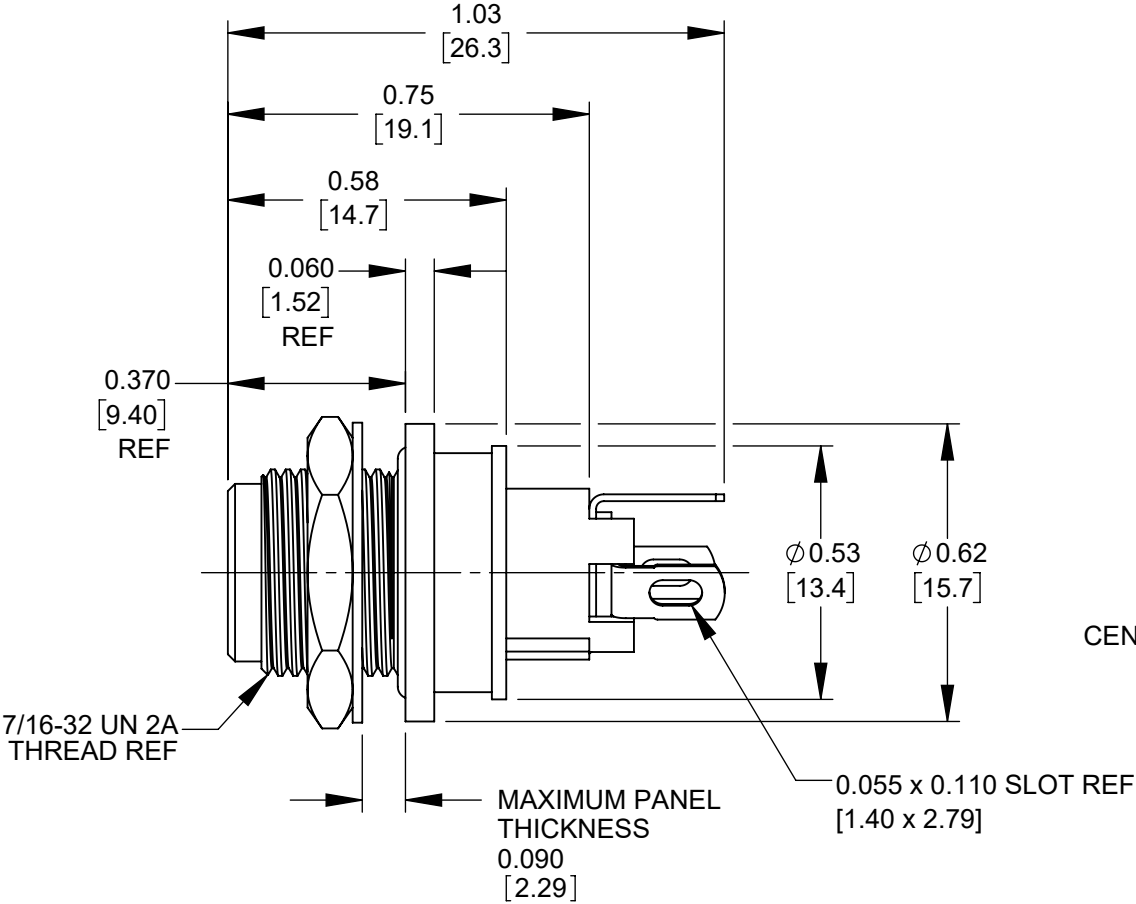
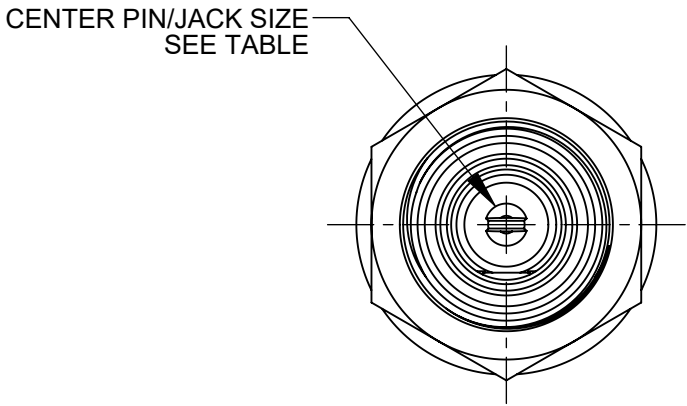
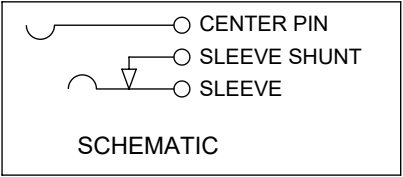


RECOMMENDED PANEL MTG HOLE



- NOTES:
- DIMENSIONS SHOWN FOR REFERENCE ONLY.
 - HEX NUT, FLAT WASHER, AND PANEL O-RING SUPPLIED UNASSEMBLED
 - MATERIAL:
HOUSINGS, HEX NUT - COPPER ALLOY, NICKEL PLATED
INSULATOR HOUSING - THERMOPLASTIC, BEIGE
O-RINGS - THERMOPLASTIC RUBBER, LUBRICATED WITH SYNTHETIC GREASE
TERMINAL INSULATORS - PHENOLIC
FLAT WASHER - COPPER ALLOY, NICKEL PLATED
PIN, SPRING, TERMINALS - COPPER ALLOY, SILVER PLATED
 - IT IS RECOMMENDED THAT THE JACK MOUNTING NUT BE TIGHTENED SNUG BY HAND BEFORE APPLYING A FINAL TIGHTENING TORQUE OF 8-10 LB-IN USING HAND TOOLS ONLY. POWER DRIVER OR IMPACT DRIVERS ARE NOT RECOMMENDED.
 - THIS PRODUCT IS RoHS COMPLIANT

					<div>UNLESS OTHERWISE SPECIFIED</div> <div>1. ALL DIMENSIONS IN INCHES [mm]</div> <div>- TWO PLACE DECIMALS ±0.02 [0.5]</div> <div>- THREE PLACE DECIMALS ±0.005 [0.13]</div>	THIS DRAWING DESCRIBES A DESIGN CONSIDERED PROPRIETARY IN NATURE, DEVELOPED AND MANUFACTURED BY SWITCHCRAFT INC. AND IS RELEASED ON A CONFIDENTIAL BASIS FOR IDENTIFICATION PURPOSES ONLY.										
						SIZE	WIDTH		MULT		LBS/M		TEMPER			
						FINISH						MATERIAL				
						SPEC No.						SPEC No.				
C	28397	06/11/21	PC	TJK		FIRST USED ON				SCALE 2.5:1		Switchcraft®				
B	28350	12/22/20	PC	TJK		DATE DRAWN 6/27/16	BY PNK	CHKD PNK 6/27/16	APVD SRC 6/27/16							
A	27941	09/06/17	PC	TJK								SHEET 1 OF 1				
REV	ECO NUMBER	DATE	BY	APVD	NAME SEALED HT POWER JACKS SOLDER LUG, RoHS						PART No. L712ASH, L722ASH				REV C	
REVISIONS					DO NOT SCALE DRAWING											

Mouser Electronics

Authorized Distributor

Click to View Pricing, Inventory, Delivery & Lifecycle Information:

[Switchcraft:](#)

[L722ASH](#)