

NOTES:

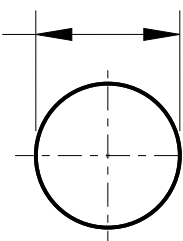
1. HARDWARE SHIPPED UNASSEMBLED.
K178 WASHER AND K180 HEX NUT.

2. MATERIALS:

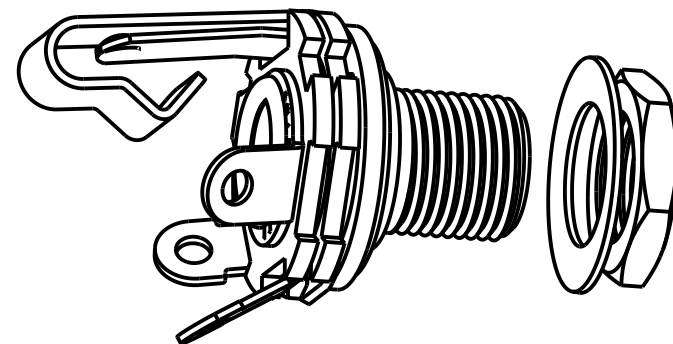
BUSHING - BRASS, NICKEL PLATED
INSULATING WASHERS - PHENOLIC
SLEEVE TERMINAL - BRASS, HOT TIN COATED
TIP & SHUNT SPRINGS - COPPER ALLOY, SILVER PLATED
METAL WASHERS - STEEL, NICKEL PLATED
HEX NUT - BRASS, NICKEL PLATED

3. THIS PRODUCT IS RoHS COMPLIANT.

$\varnothing 0.375 \begin{matrix} +0.020 \\ -0.000 \end{matrix}$



MOUNTING HOLE



CUSTOMER DRAWING



STAR SYMBOL DENOTES CRITICAL DIMENSION

THIS DRAWING DESCRIBES A DESIGN CONSIDERED PROPRIETARY IN NATURE, DEVELOPED AND MANUFACTURED BY SWITCHCRAFT INC. AND IS RELEASED ON A CONFIDENTIAL BASIS FOR IDENTIFICATION PURPOSES ONLY.

UNLESS OTHERWISE SPECIFIED

- ALL DIMENSIONS IN INCHES
-TWO PLACE DECIMALS ± 0.01
-THREE PLACE DECIMALS ± 0.005
-ANGLES $\pm 1^\circ$
-ALL DIA. CONCENTRIC WITHIN 0.005 T.I.R.

- FEATURES ON THE SAME CENTERLINE
MUST BE ALIGNED WITHIN ± 0.002

- REMOVE ALL BURRS

SIZE		WIDTH		MULT		LBS/M		TEMPER	
FINISH SPEC No.					MATERIAL SPEC No.				
FIRST USED ON			SCALE 2:1		Switchcraft®				
DATE DRAWN		BY	CHKD						
5-30-20		TJK	TJK 5-30-20		TJK 5-30-20		SHEET 1 OF 1		
NAME 2 CONDUCTOR 1/4" LITTEL JAX, RoHS					PART No. L12A			REV C	

REV	ECO NUMBER	DATE	BY	APVD
C	REDRAWN - 26696	1-20-11	TJK	TJK
REVISIONS				

DO NOT SCALE DRAWING

Pro/Engineer CAD File

A

Mouser Electronics

Authorized Distributor

Click to View Pricing, Inventory, Delivery & Lifecycle Information:

[Switchcraft:](#)

[L12A](#)